

Overview of the results of the household CHR13 Student with Work 0

Calculation Time

Freitag, 1. Januar 2016 - Sonntag, 1. Januar 2017

Energy Intensity: Random

Seed 5120

LoadProfileGenerator 5.8.0.16019

by Noah Pflugradt

<http://www.loadprofilegenerator.de>

Rendering date:16.12.2016 09:05:50

Table of Contents

- Totals..... 3
- Persons..... 5
- Activity Frequency Charts..... 6
- Activity Distribution per Person.....7
- Time Use per Person per Affordance Per Person..... 8
- Energy use per person per affordance..... 10
- Time Use per Person Per Affordance according to different category definitions..... 12
- Overview of the actions of each member of the household..... 14
- Overview of the time of the use per load type per device.....15
- Energy/Resource use distribution per load type per affordance..... 17
- Energy use for each load type for each device.....22
- Duration curve for each device for each load type..... 26
- Duration curve for each load type..... 28
- Grouped energy use for each load type for each device..... 30
- Example of the device profiles for each load type..... 34
- Overview of the time and power of the use per load type per device..... 48
- Energy use per load type during different seasons, split by weekday/saturday/sunday..... 50
- Location Distribution per Person..... 52
- Actions.csv..... 53
- Sum Profiles..... 54
- Time Profiles..... 58
- Variables..... 59

Totals

Totals for each Loadtype

| Load Type | Value | Unit |
|-------------|----------|------|
| Cold Water | 10206.70 | L |
| Electricity | 1963.20 | kWh |
| Warm Water | 48089.37 | L |

Totals for each Loadtype per Day

| Load Type | Value | Unit |
|-------------|--------|------|
| Cold Water | 27.89 | L |
| Electricity | 5.36 | kWh |
| Warm Water | 131.39 | L |

Minimum and Maximum for each Loadtype

| Household | Minimum | Maximum | Unit |
|-------------|---------|---------|-------|
| Cold Water | 0.00 | 11.00 | L/Min |
| Electricity | -74.72 | 6943.72 | Watt |
| Warm Water | 0.00 | 19.60 | L/Min |

Totals for each Loadtype per Person

| Load Type | Value | Unit |
|-------------|----------|------|
| Cold Water | 10206.70 | L |
| Electricity | 1963.20 | kWh |

| | | |
|------------|----------|---|
| Warm Water | 48089.37 | L |
|------------|----------|---|

Totals for each Loadtype per Person per Day

| Load Type | Value | Unit |
|-------------|--------|------|
| Cold Water | 27.89 | L |
| Electricity | 5.36 | kWh |
| Warm Water | 131.39 | L |

Persons

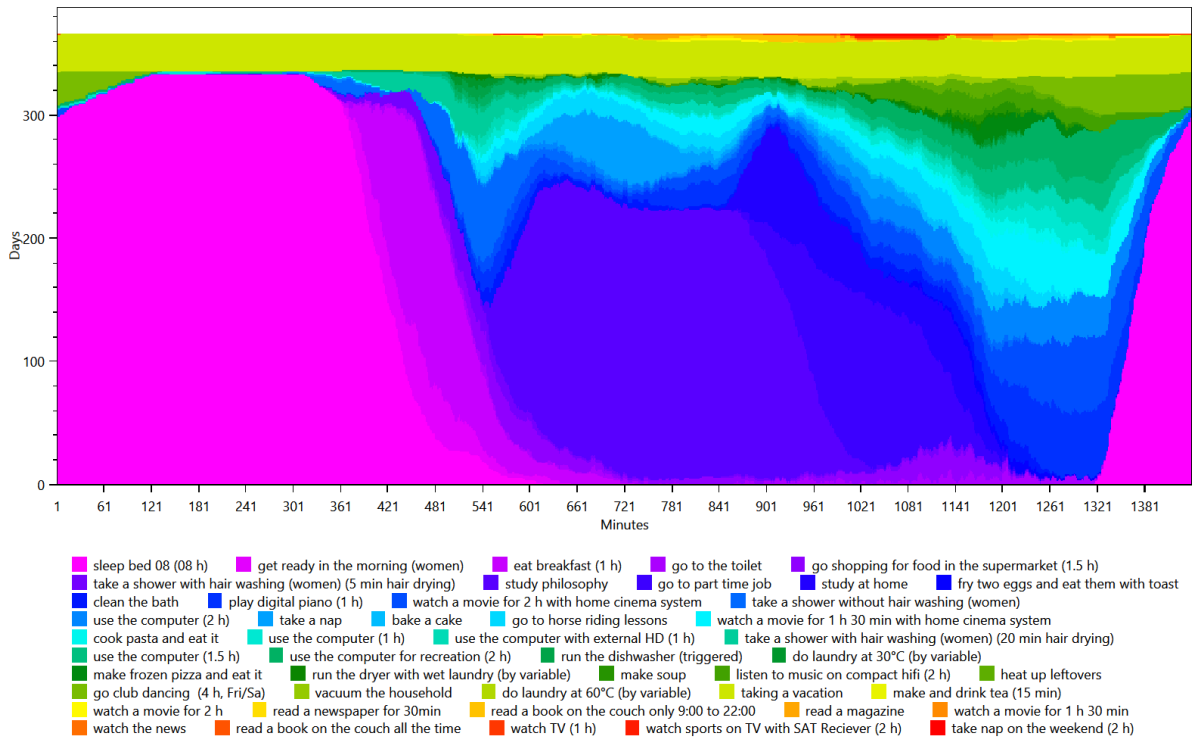
- HHO
 - CHR13 Iris 2 (22/Female)(22/Female)

Activity Frequency Charts

This is made from the files starting with: ActivityFrequenciesPerMinute

These charts show an ordered distribution of times of the activities of each person. This helps with judging quickly if a person is sleeping correctly and if they are going to work regularly.

HH0 - CHR13 Iris 2 (22 Female)

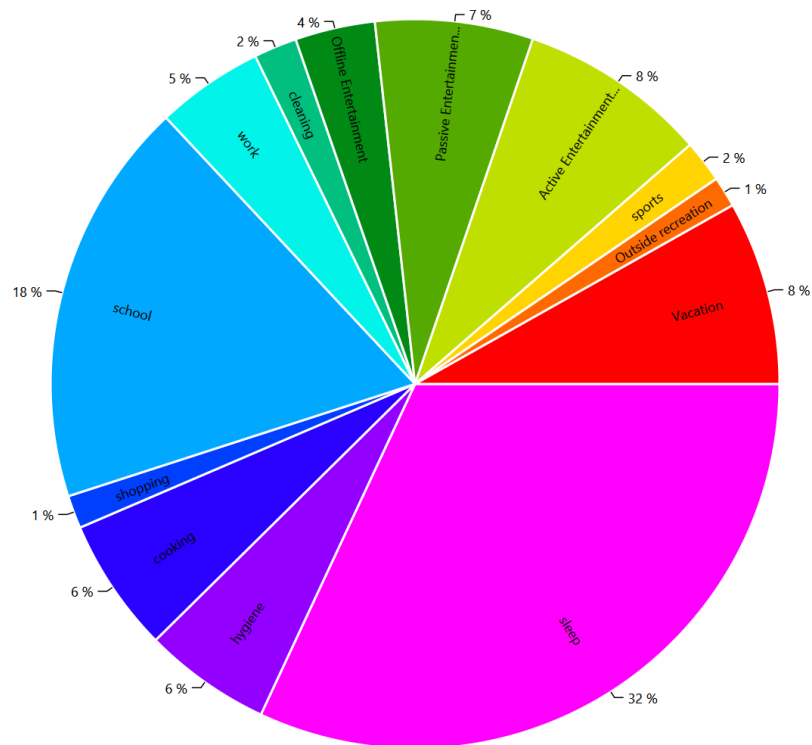


Activity Distribution per Person

This is made from the files starting with: ActivityPercentage

This shows the distribution of the activities, grouped by the affordance AffordanceToCategories.

HH0 - CHR13 Iris 2 (22 Female)

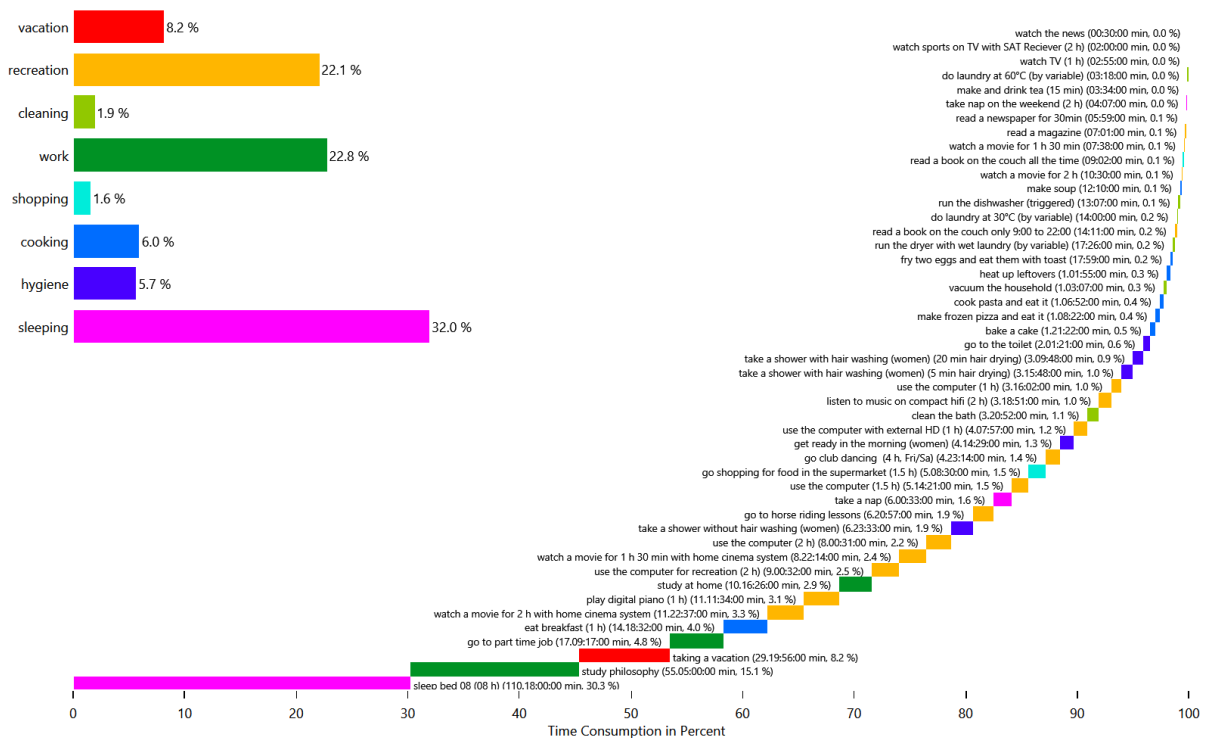


Time Use per Person per Affordance Per Person

This is made from the files starting with: AffordanceTimeUse

These charts show how the people in the household use their time. This shows the individual affordances to help find problems in the household definition.

HH0 - CHR13 Iris 2 (22 Female)

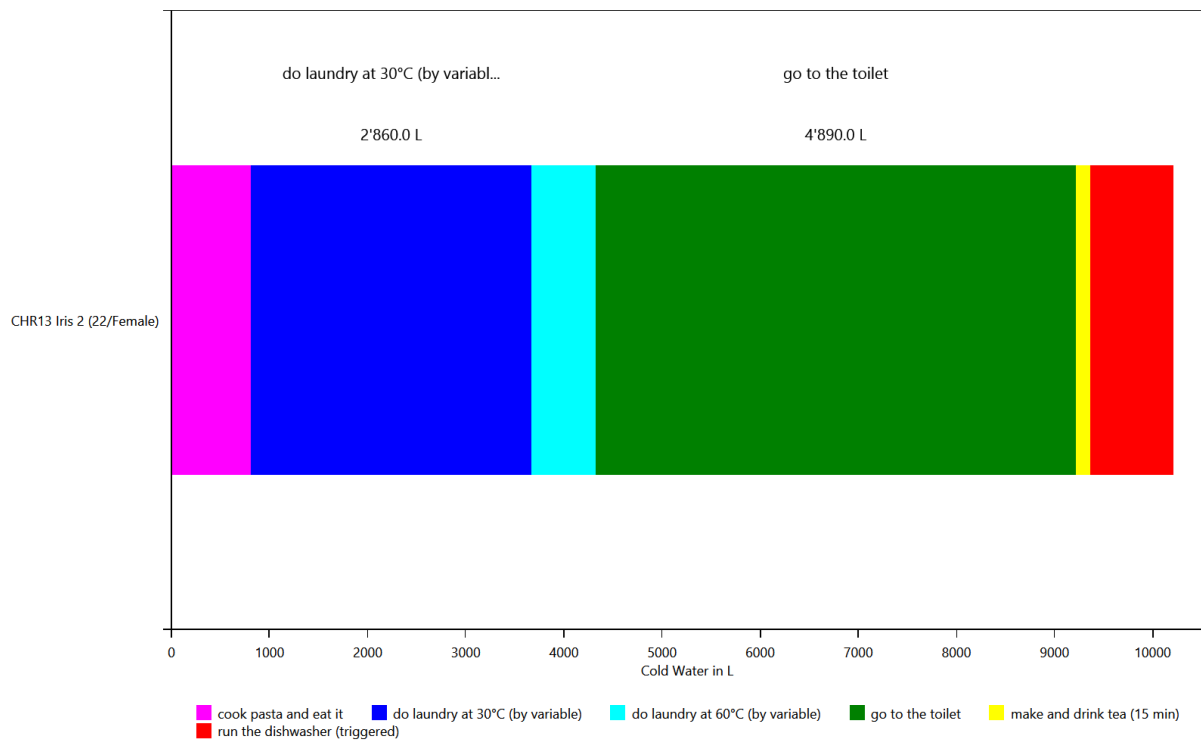


Energy use per person per affordance

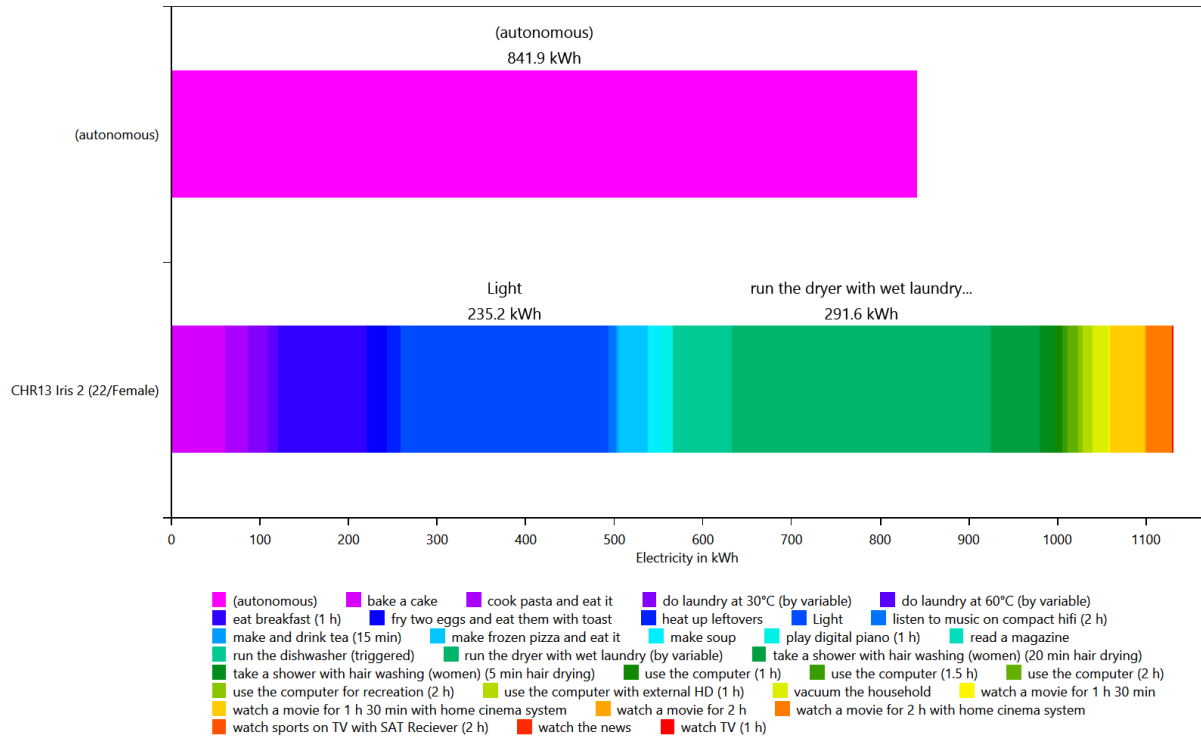
This is made from the files starting with: **AffordanceEnergyUsePerPerson**

This shows the distribution of the energy/ressource use to each affordance by load type and by person. This helps with figuring out if a person is using too much electricity.

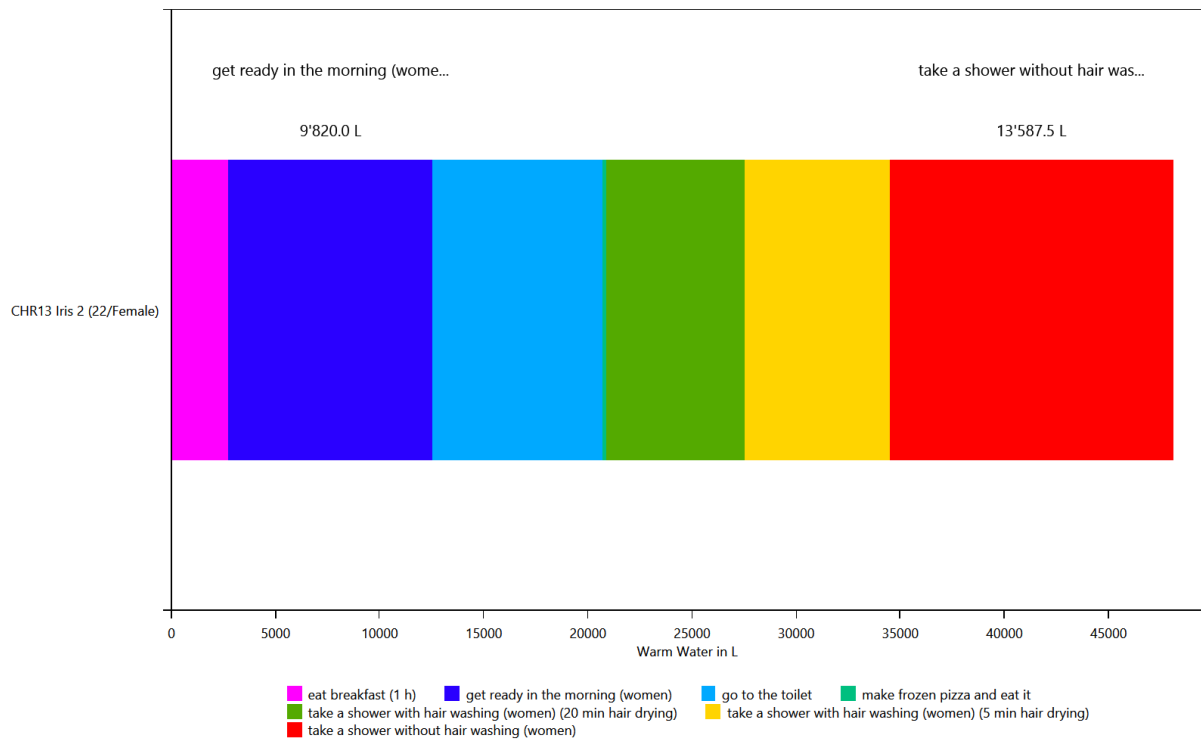
HH0 - Cold Water



HH0 - Electricity



HH0 - Warm Water

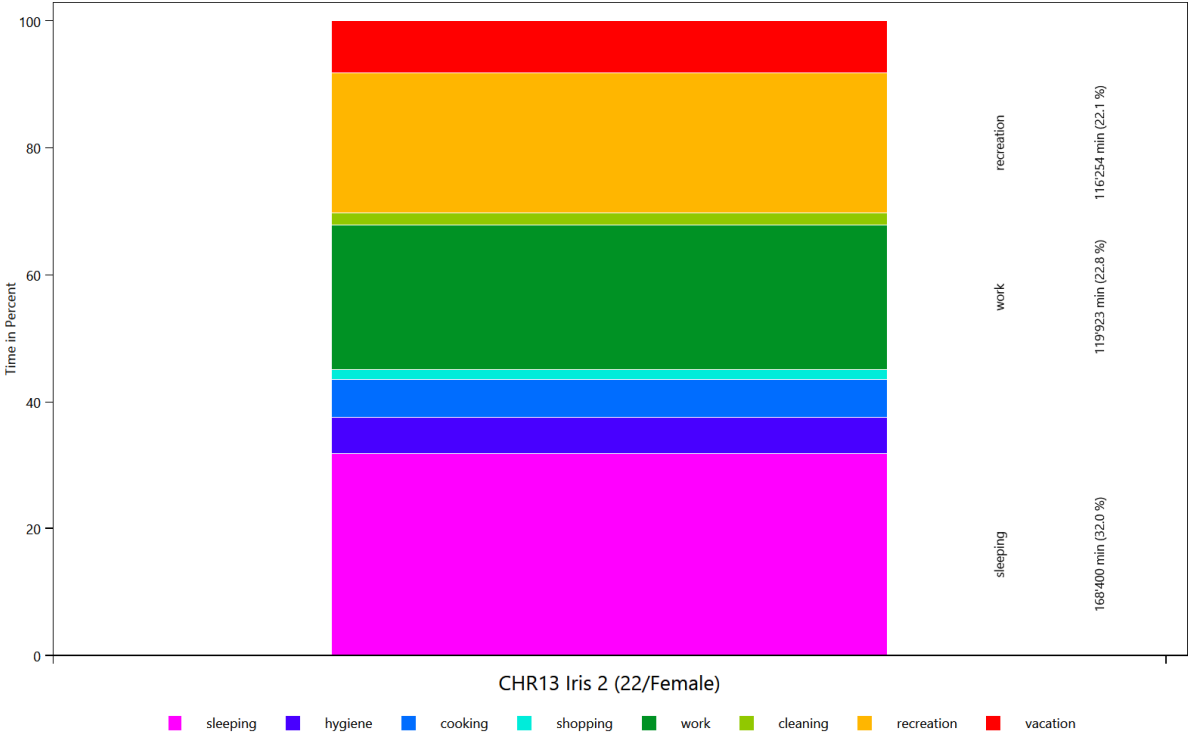


Time Use per Person Per Affordance according to different category definitions

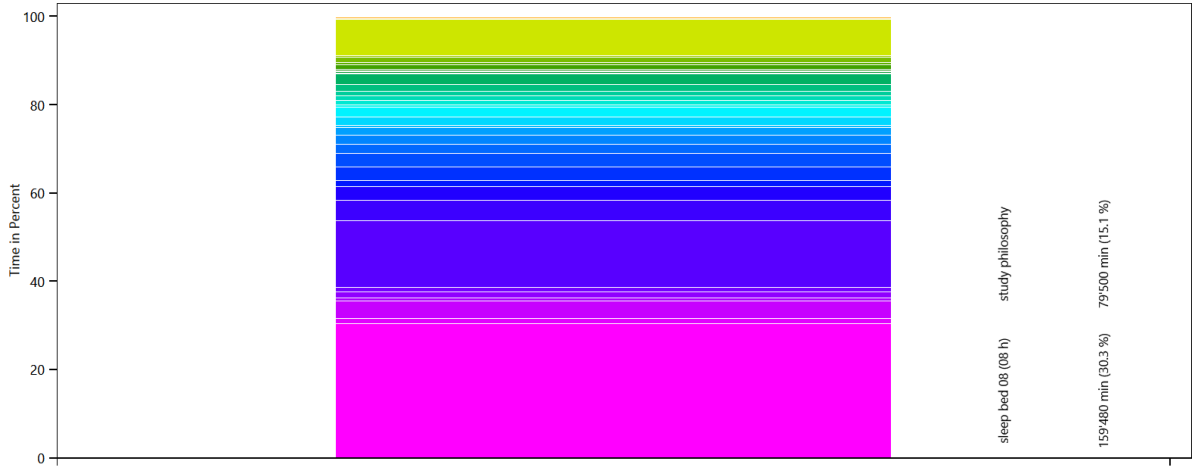
This is made from the files starting with: AffordanceTaggingSet

These charts show how the people in the household use their time. To help with analysis, the activities can be grouped by various criteria. This is done with the affordance tagging sets in the LPG.

Basic Tagging - HH0



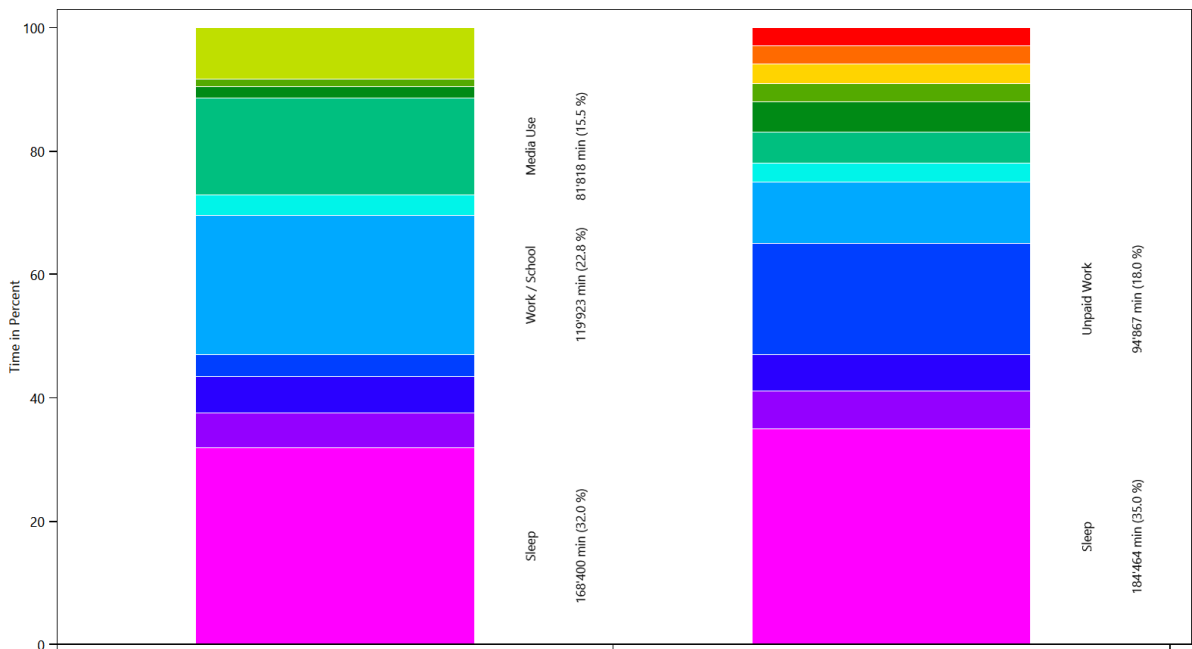
Tagging Set For Planning - HH0



CHR13 Iris 2 (22/Female)

- sleep bed 08 (08 h)
- get ready in the morning (women)
- eat breakfast (1 h)
- go to the toilet
- go shopping for food in the supermarket (1.5 h)
- take a shower with hair washing (women) (5 min hair drying)
- study philosophy
- go to part time job
- study at home
- fry two eggs and eat them with toast
- clean the bath
- play digital piano (1 h)
- watch a movie for 2 h with home cinema system
- take a shower without hair washing (women)
- use the computer (2 h)
- take a nap
- bake a cake
- go to horse riding lessons
- watch a movie for 1 h 30 min with home cinema system
- cook pasta and eat it
- use the computer (1 h)
- use the computer with external HD (1 h)
- take a shower with hair washing (women) (20 min hair drying)
- use the computer (1.5 h)
- use the computer for recreation (2 h)
- run the dishwasher (triggered)
- do laundry at 30°C (by variable)
- make frozen pizza and eat it
- run the dryer with wet laundry (by variable)
- make soup
- listen to music on compact hifi (2 h)
- heat up leftovers
- go club dancing (4 h, Fri/Sa)
- vacuum the household
- do laundry at 60°C (by variable)
- vacation
- make and drink tea (15 min)
- watch a movie for 2 h
- read a newspaper for 30min
- read a book on the couch only 9:00 to 22:00
- read a magazine
- watch a movie for 1 h 30 min
- watch the news
- read a book on the couch all the time
- watch TV (1 h)
- watch sports on TV with SAT Receiver (2 h)
- take nap on the weekend (2 h)

Wo bleibt die Zeit - HH0



CHR13 Iris 2 (22/Female)

Reference

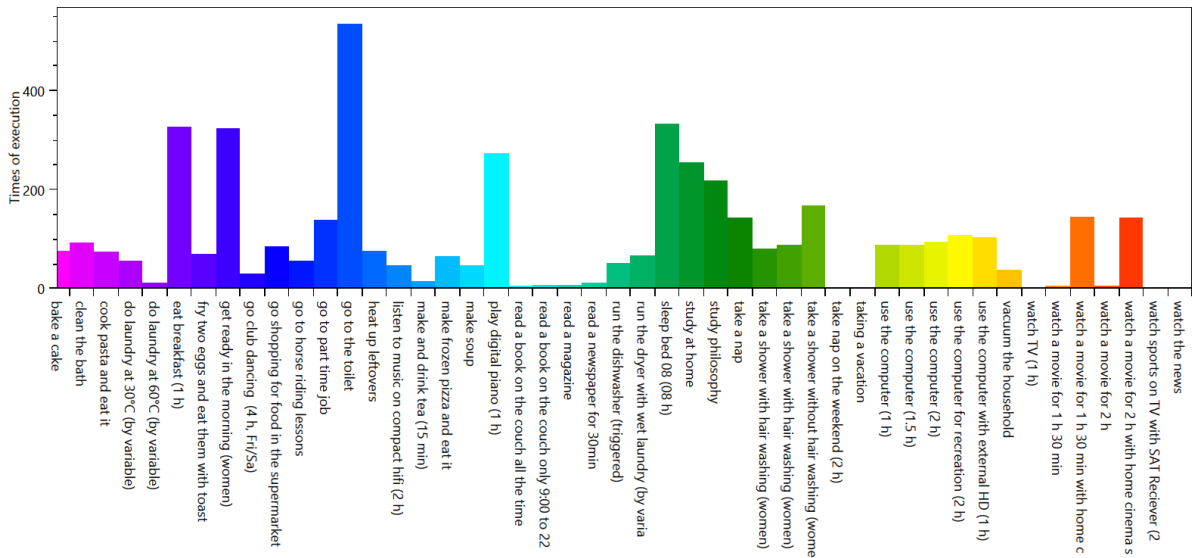
- Sleep
- Hygiene
- Food
- Unpaid Work
- Work / School
- Hobby
- Media Use
- Sport
- Events
- vacation
- Entertainment
- Games
- Contacts

Overview of the actions of each member of the household

This is made from the files starting with: ExecutedActionsOverviewCount

These charts show how often each affordance was executed.

HH0 - CHR13 Iris 2 (22 Female)

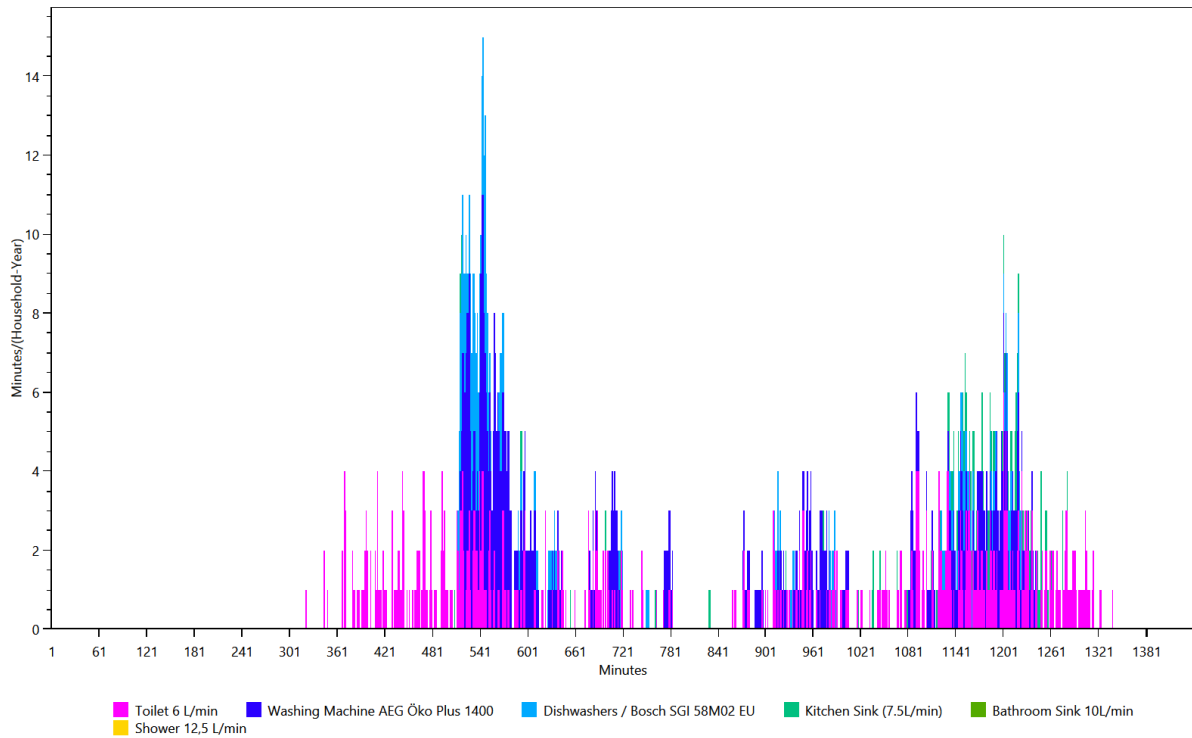


Overview of the time of the use per load type per device

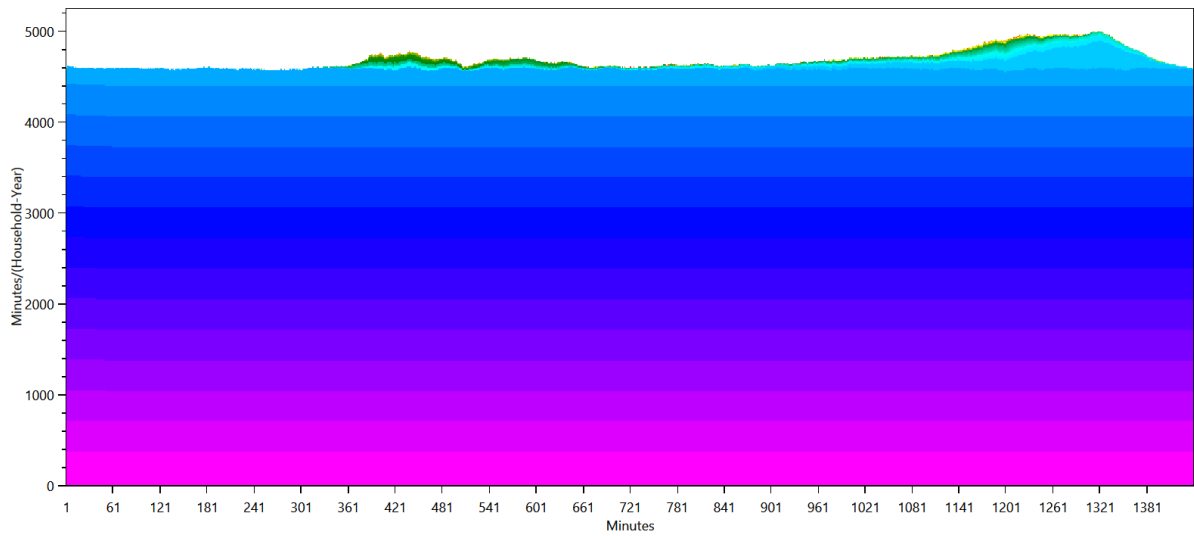
This is made from the files starting with: **TimeOfUseEnergyProfiles**

The time of use energy profiles shows when each device was used.

Cold Water

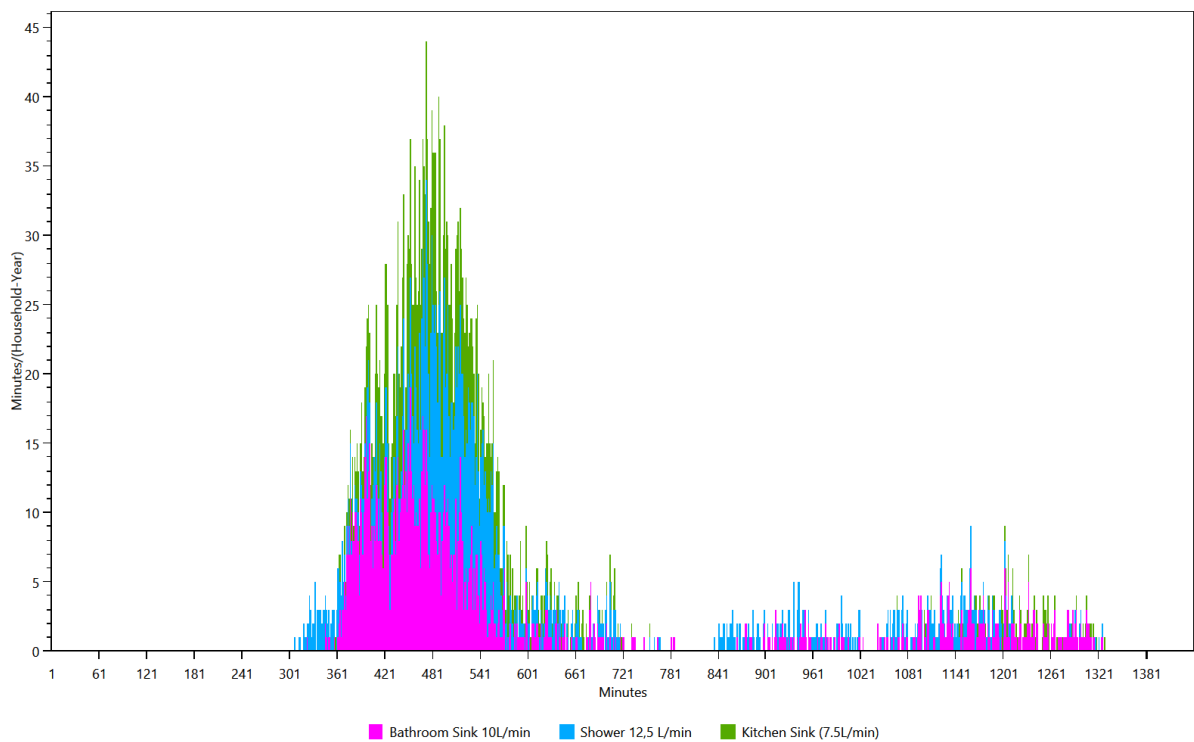


Electricity



- Electric Toothbrush Dondodent Professional Clean
- Microwave / Panasonic NN 5259
- PC / Acer 8400
- Siemens Fridge from 1987 (unknown type)
- Miele T 7744 C
- Dishwashers / Bosch SGI 58M02 EU
- Hair Dryer / Braun Satin Pro 2200 Ion Care
- Siemens VS 91143 S Super 911
- Kitchen Stove / Bauknecht Heko 750 PT Kitchen stove left hind - full power
- Handmixer / Phillips Robust HR 1581
- CD/DVD Player / Philips DVDR 725 H
- Router / AVM FRITZ! Box Fon WLAN 7390
- Epson Stylus S20
- SAT Receiver / Kathrein UFS913
- TASKalfa 180
- Home Cinema System / Samsung HT-D5550
- Grundig 70cm CRT
- Kitchen radio / AEG KRC 4323 CD
- Living Room Light (200W)
- Digitalpiano / Kawai CN-23
- Kitchen Light (20W)
- External Harddrive Iomega 3.5"
- Washing Machine AEG Öko Plus 1400
- Moulinex electronic 833
- Miele DG 1450
- Coffee Machine / Braun Impression KF 600
- Kitchen Stove / Bauknecht Heko 750 PT Kitchen stove front left
- Extractor Hood / Miele DA 429-4
- Toaster / Bosch TAT8SL1
- Food Slicer / DOMO Schneidemaschine DO521S
- Bedroom Light (60W)
- Electric Kettle / Phillips Essential HD 4685/90 Schwarz

Warm Water



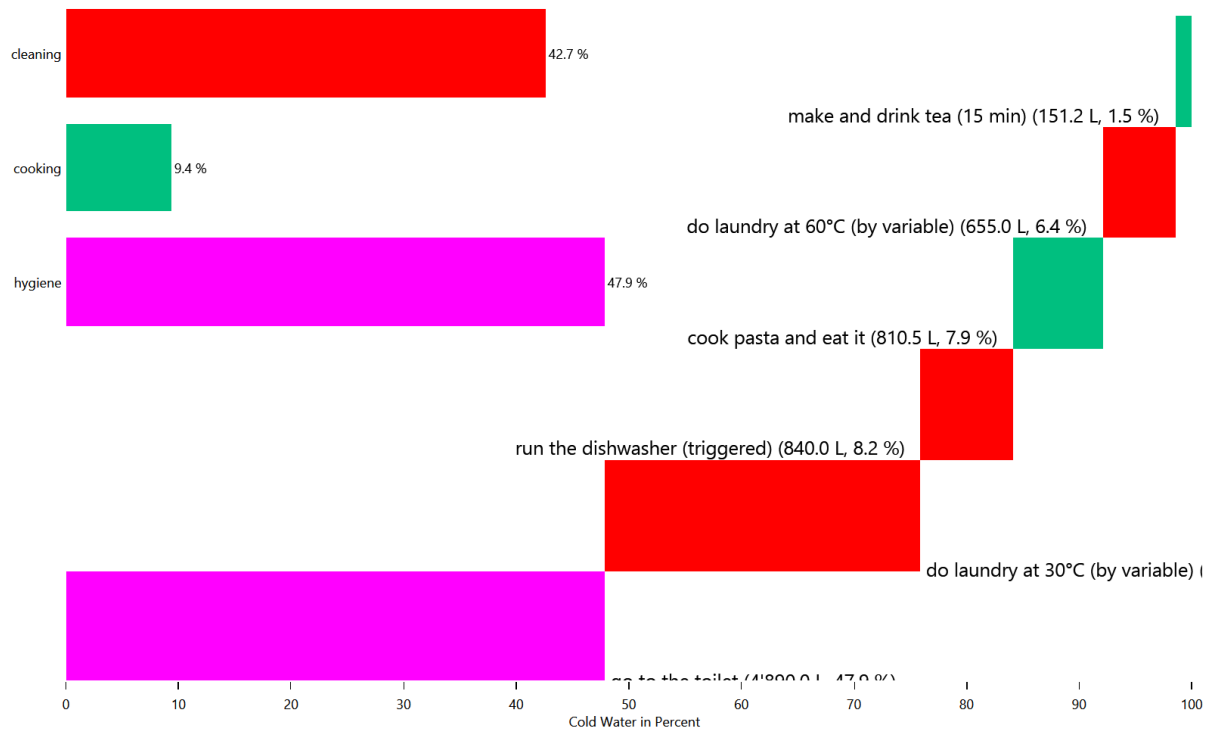
- Bathroom Sink 10L/min
- Shower 12,5 L/min
- Kitchen Sink (7.5L/min)

Energy/Resource use distribution per load type per affordance

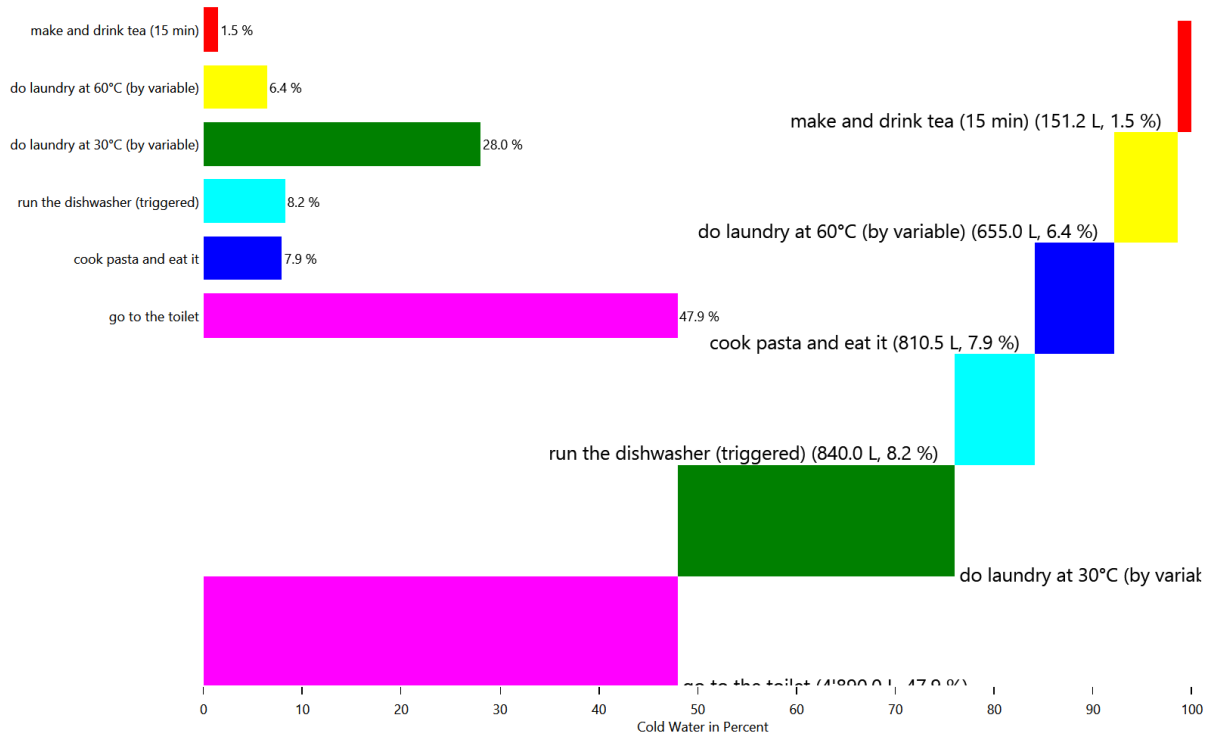
This is made from the files starting with: **AffordanceEnergyUse**

This shows the distribution of the energy/ressource use to each affordance by load type.

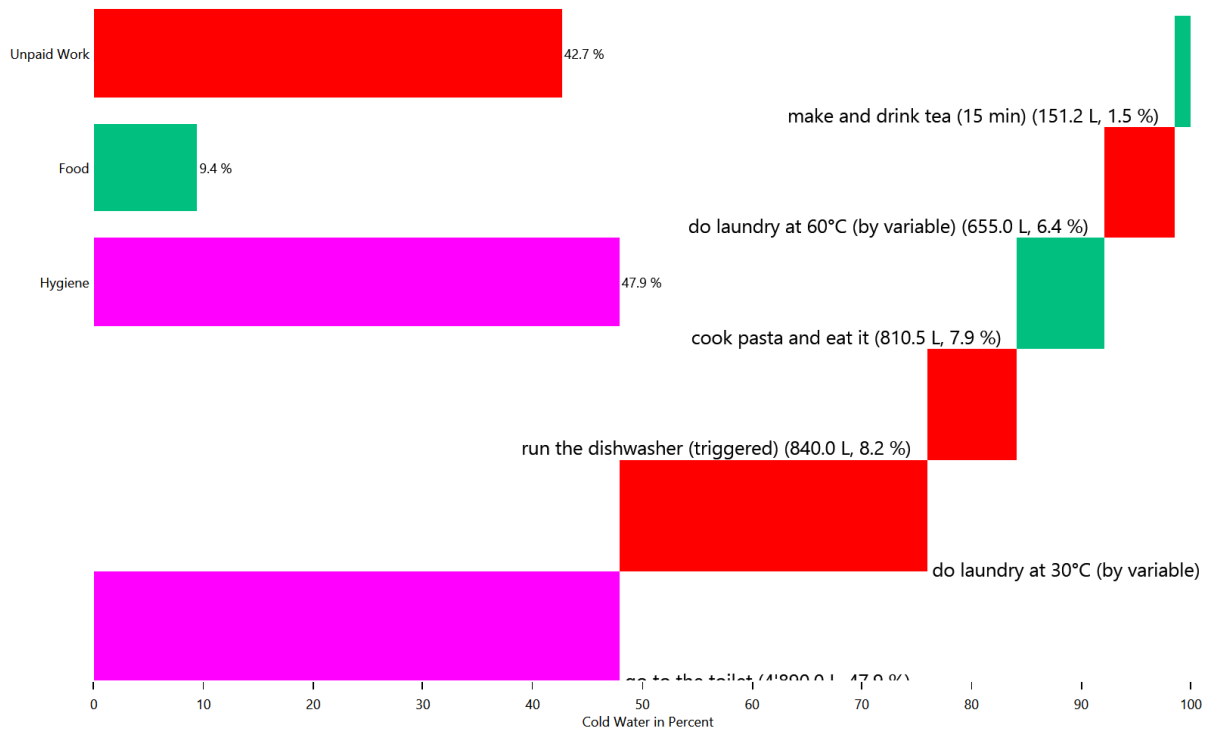
HH0 - Cold Water



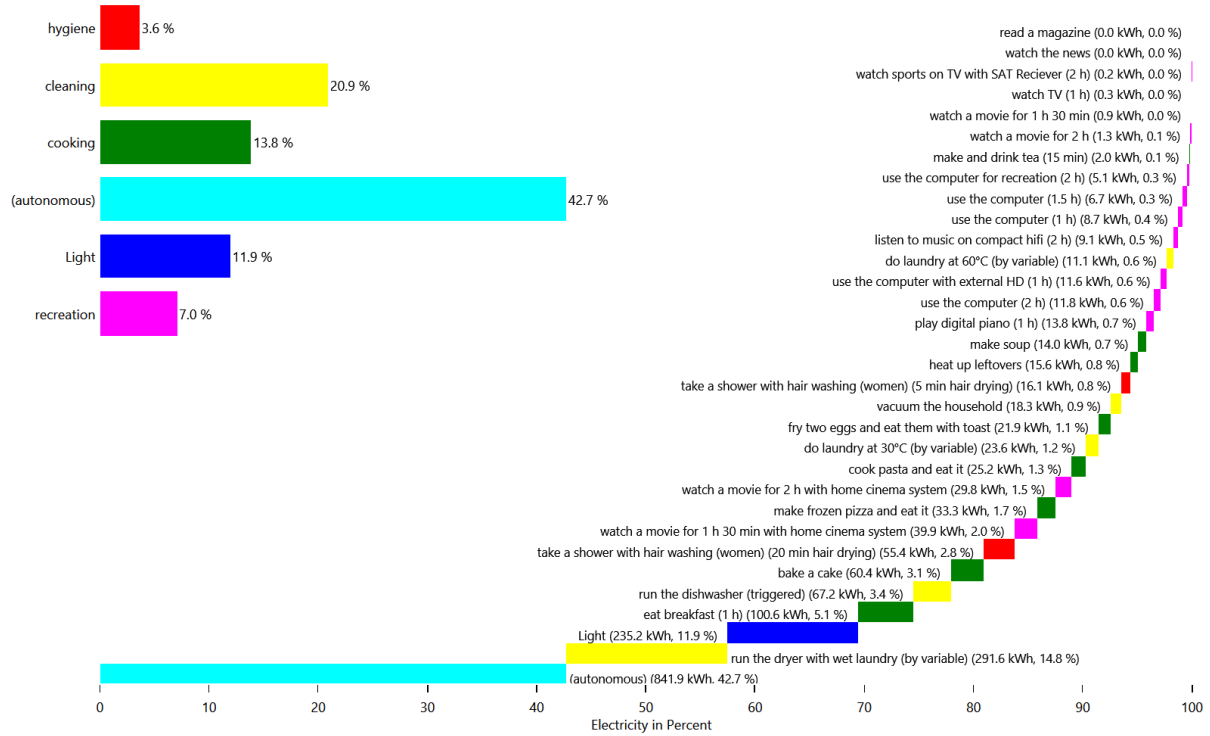
HH0 - Cold Water



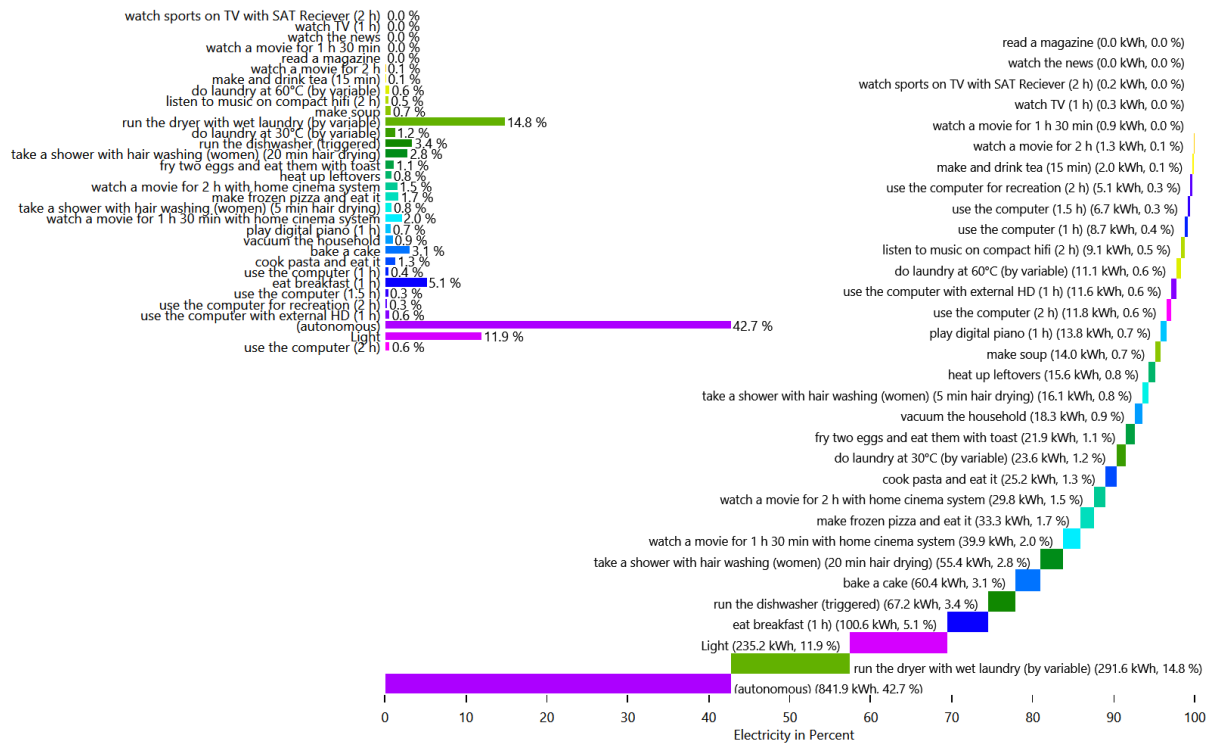
HH0 - Cold Water



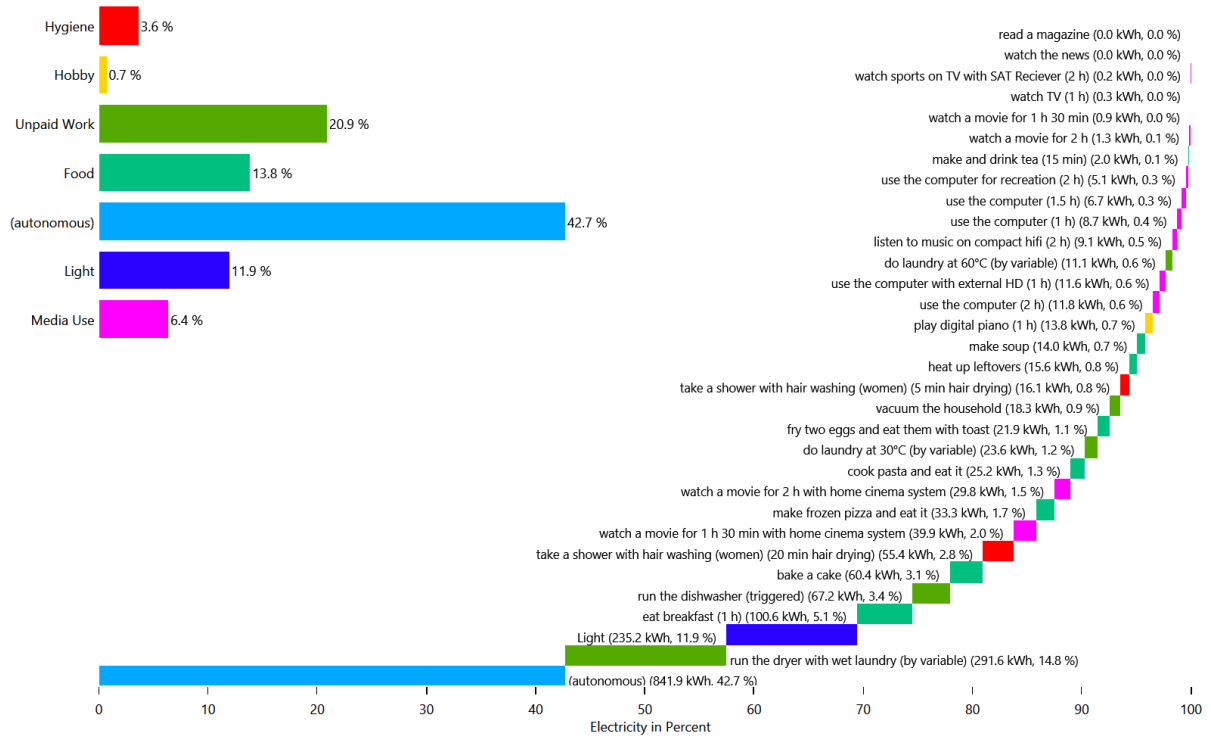
HH0 - Electricity



HH0 - Electricity



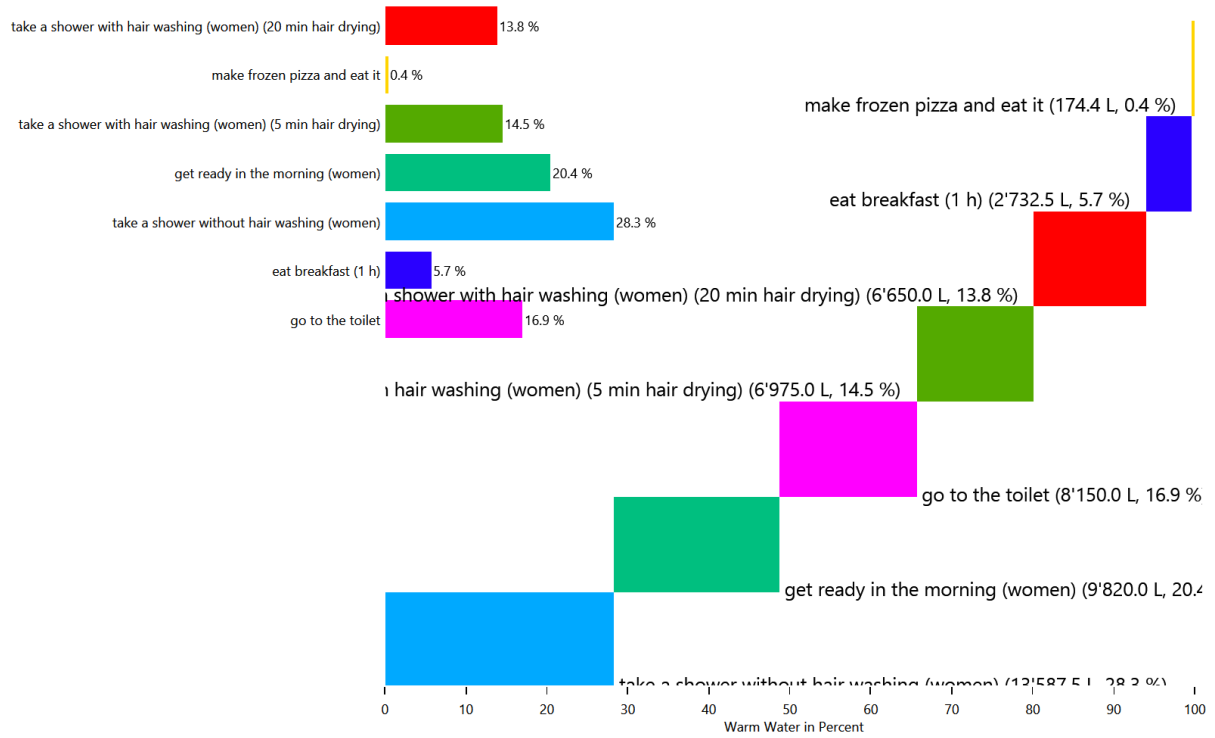
HH0 - Electricity



HH0 - Warm Water



HH0 - Warm Water



HH0 - Warm Water

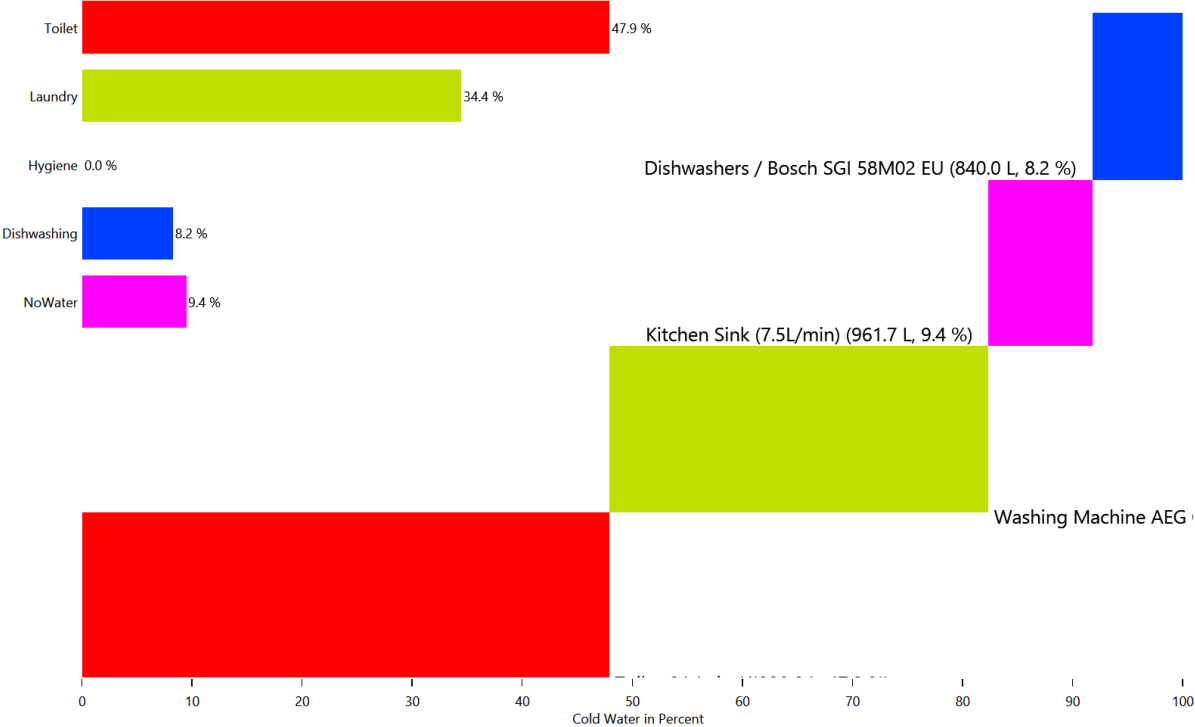


Energy use for each load type for each device

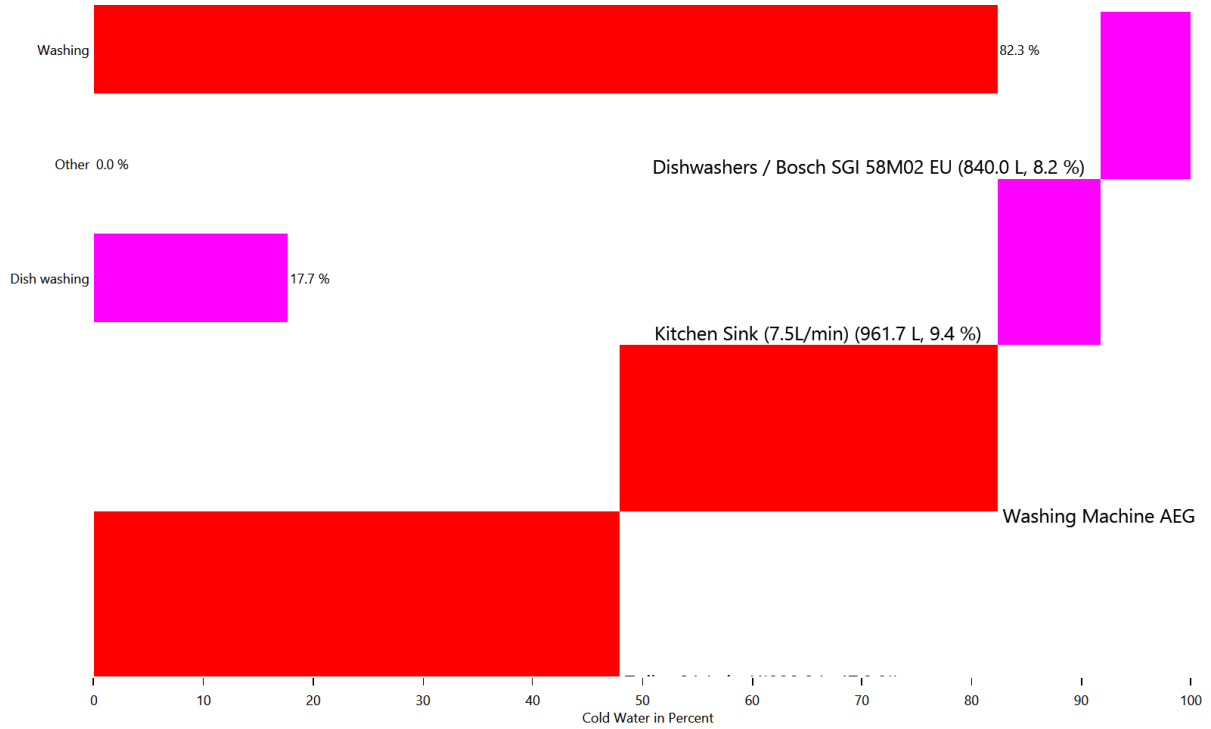
This is made from the files starting with: DeviceSums

These pie charts show the energy use for each individual device in each load type.

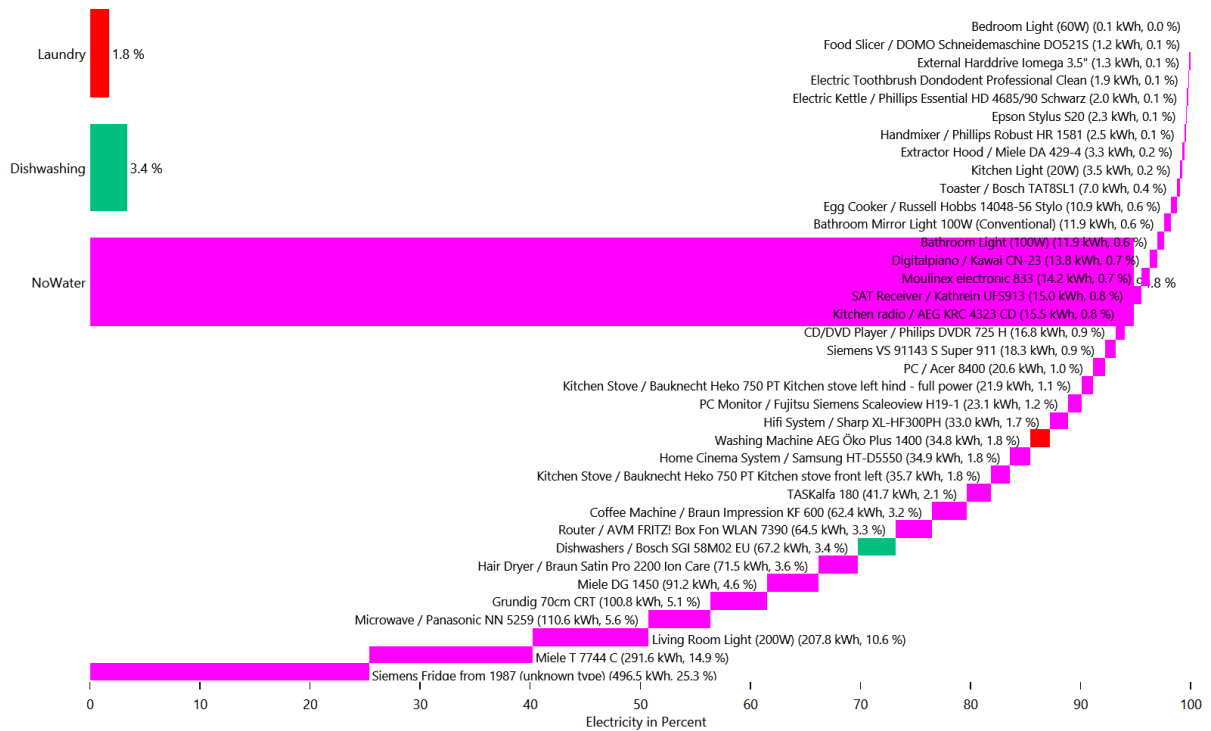
Cold Water



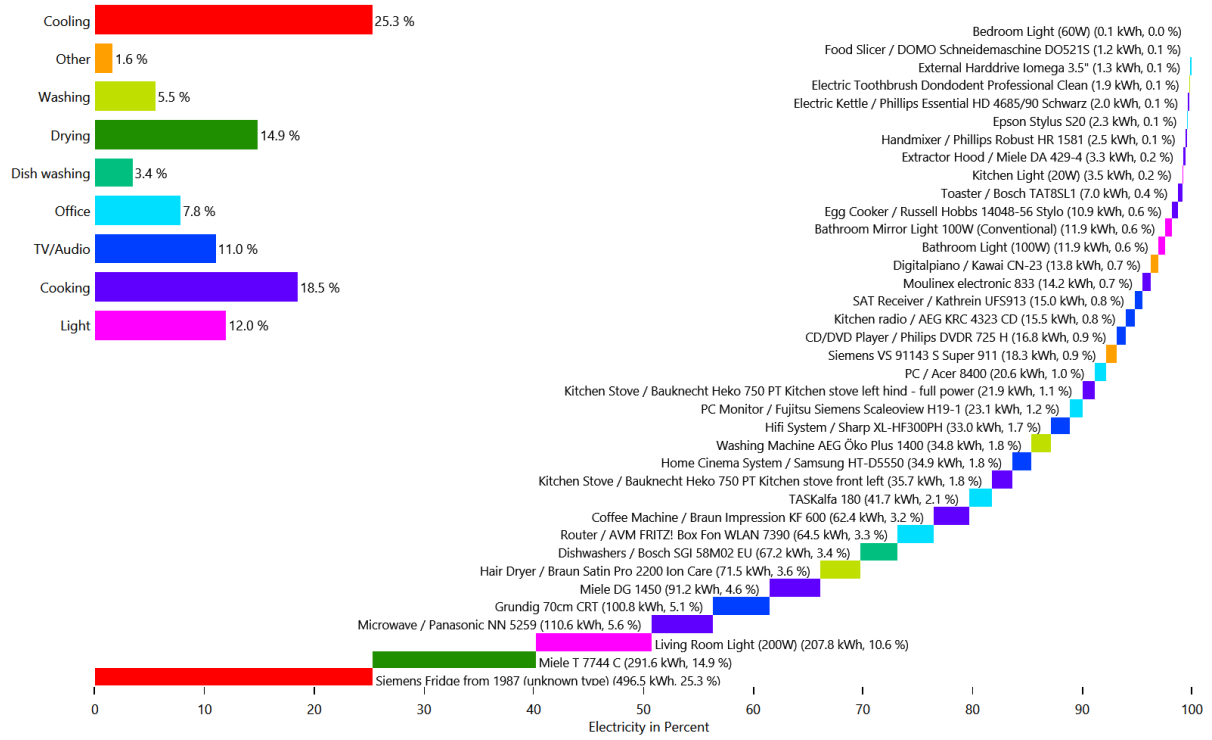
Cold Water



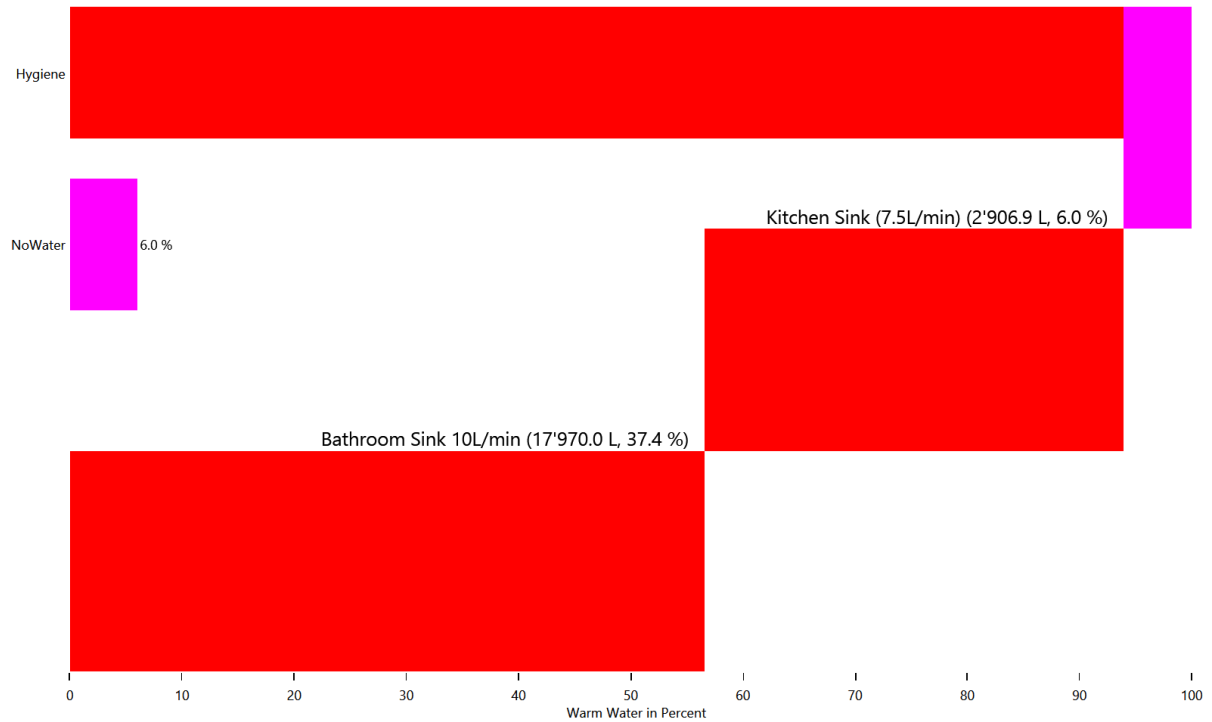
Electricity



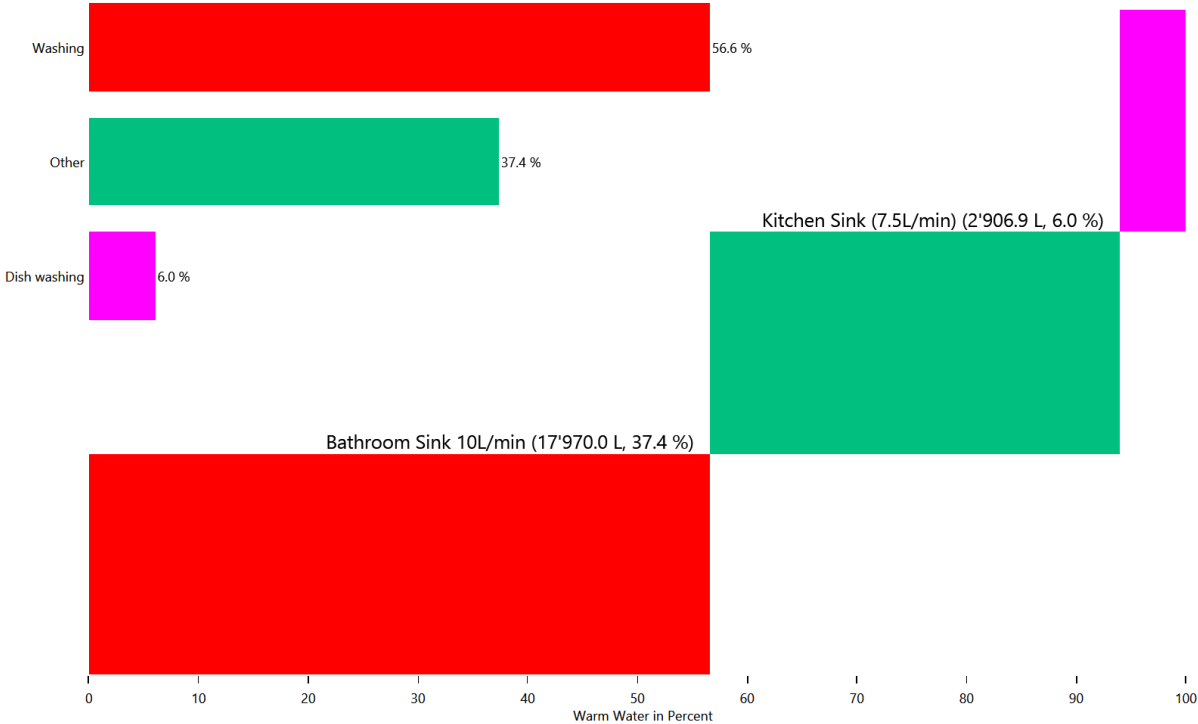
Electricity



Warm Water



Warm Water

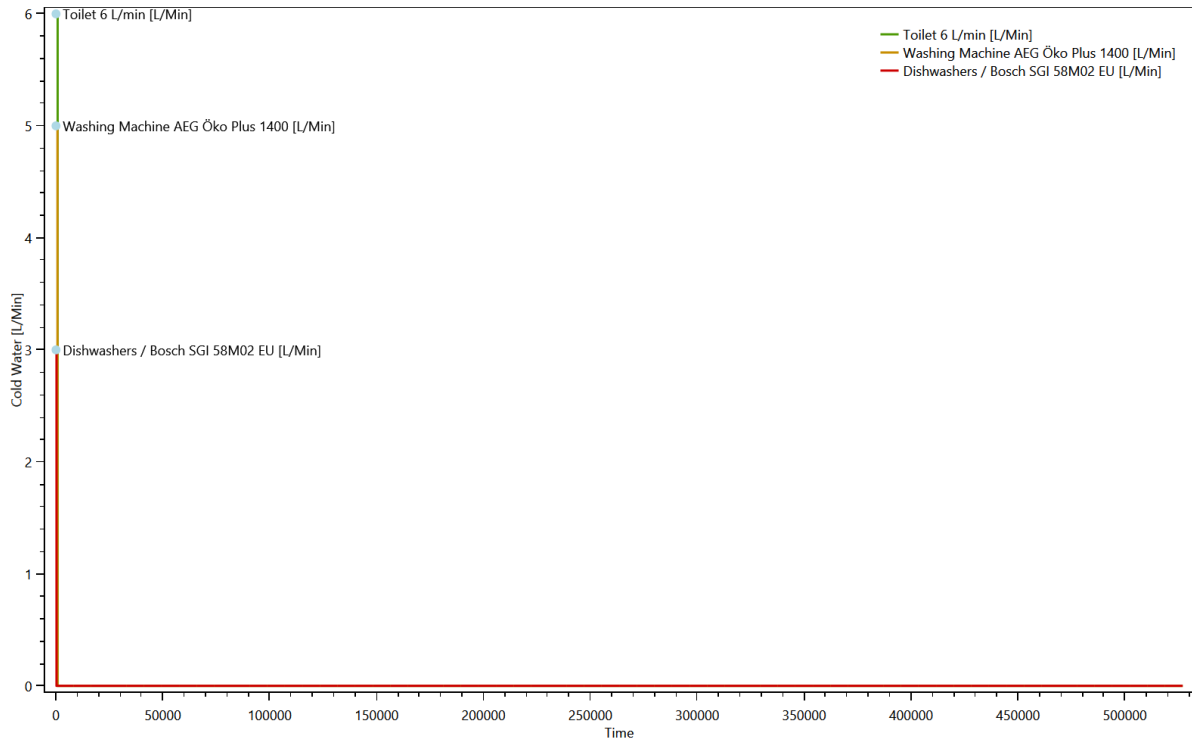


Duration curve for each device for each load type

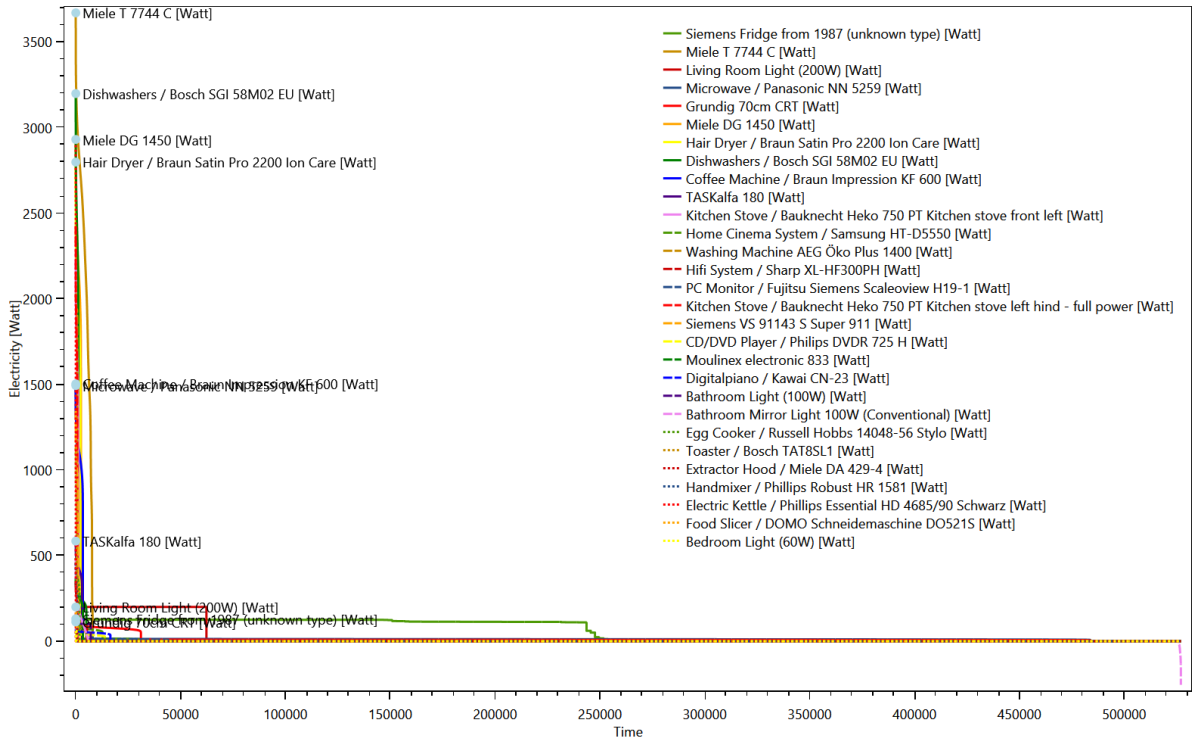
This is made from the files starting with: DeviceDurationCurves

The device duration curve show the duration curve of each device to give an overview of the power consumption.

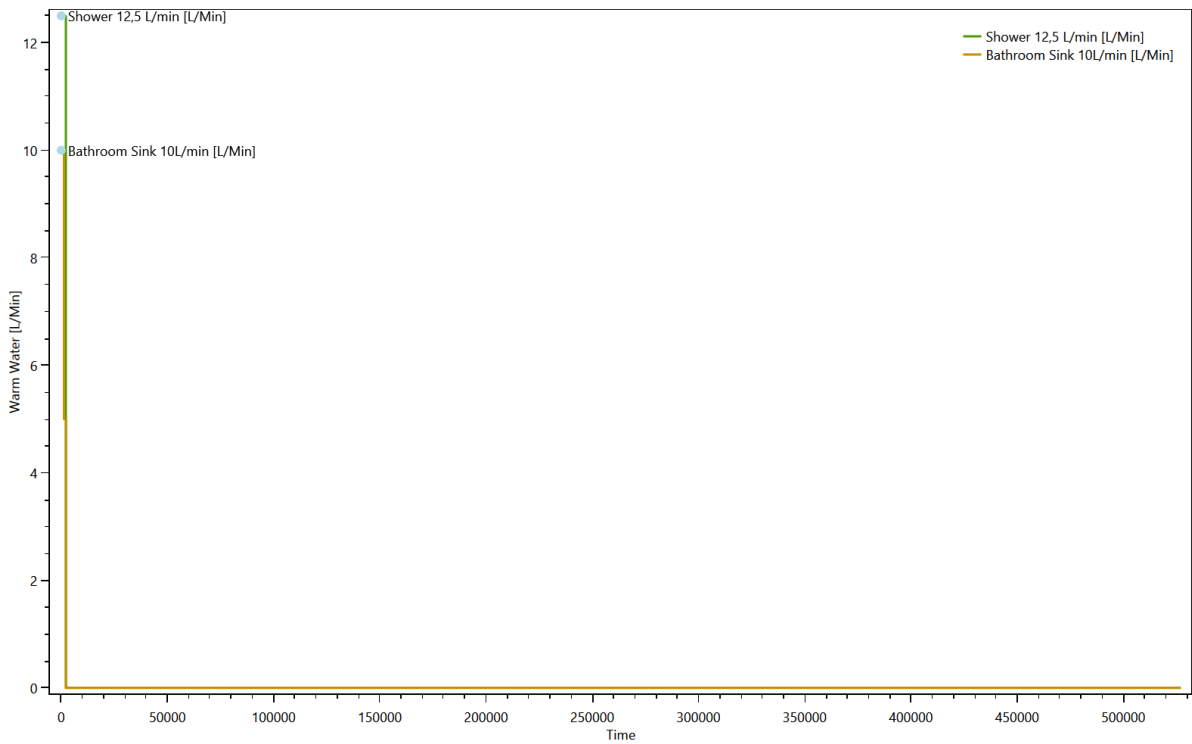
Cold Water



Electricity



Warm Water

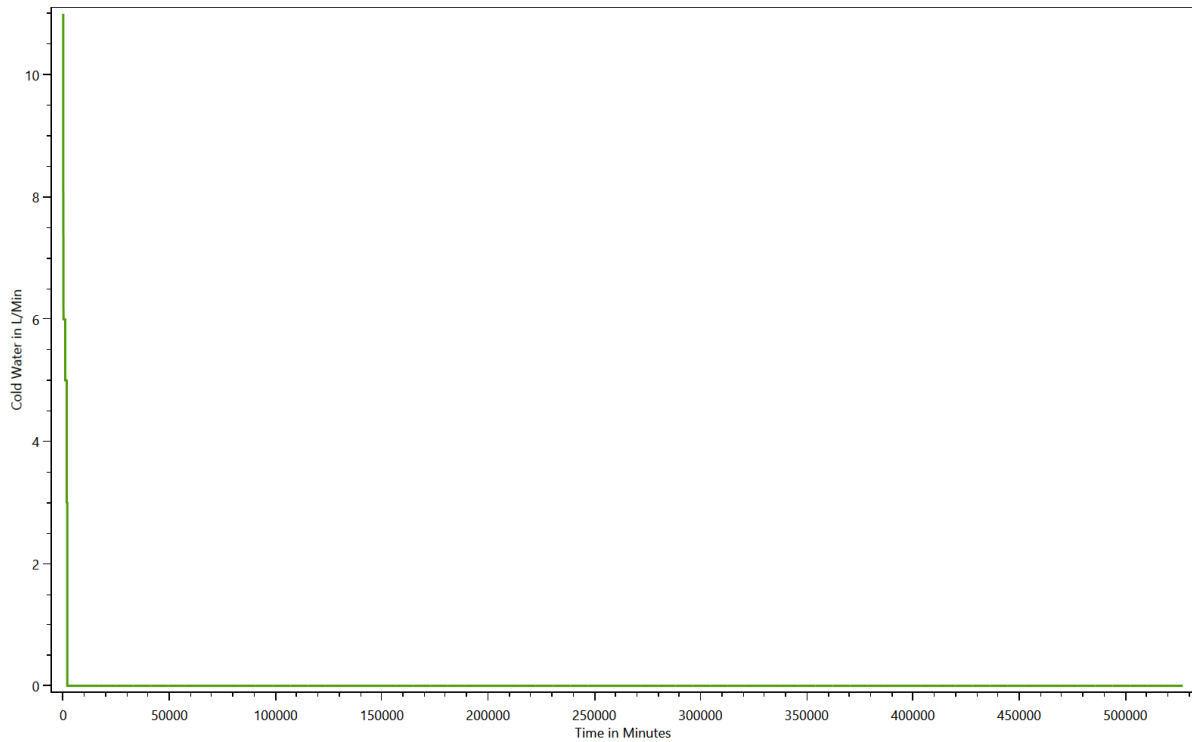


Duration curve for each load type

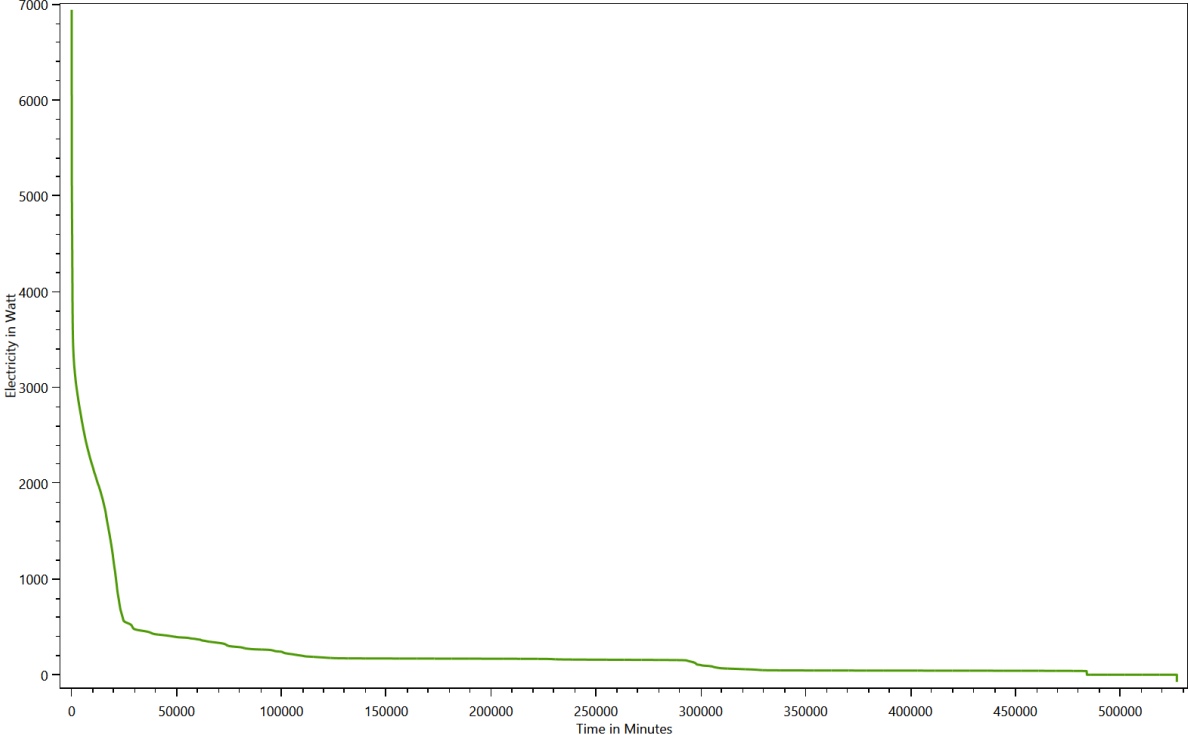
This is made from the files starting with: **DurationCurve**

The duration curve show the duration curve for the entire household to give an overview of the power consumption.

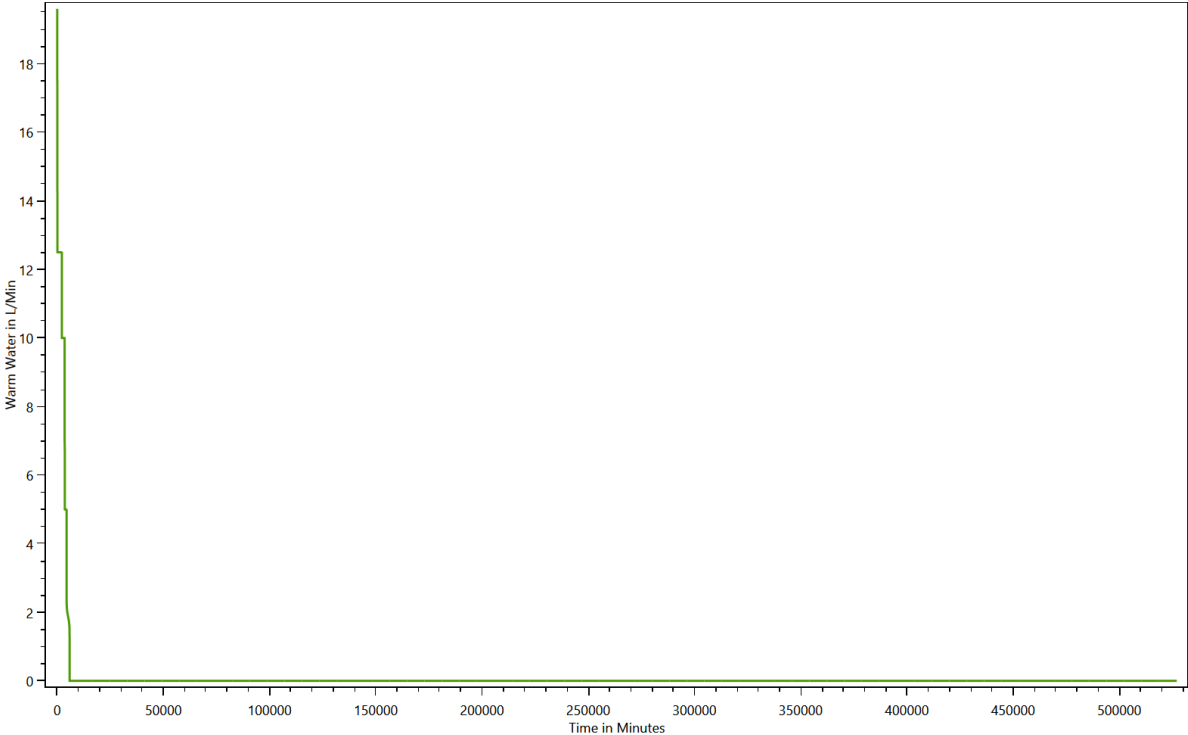
Cold Water



Electricity



Warm Water

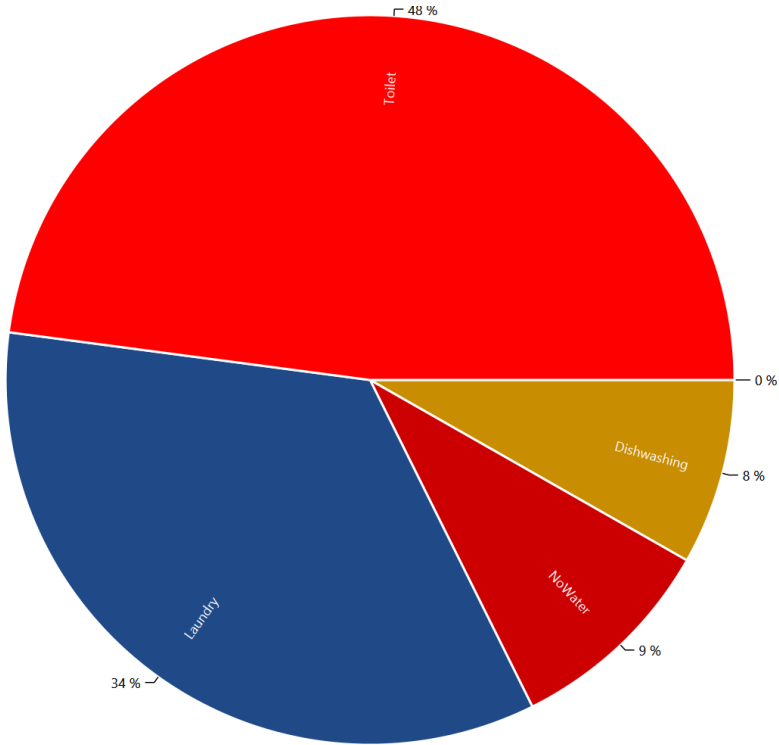


Grouped energy use for each load type for each device

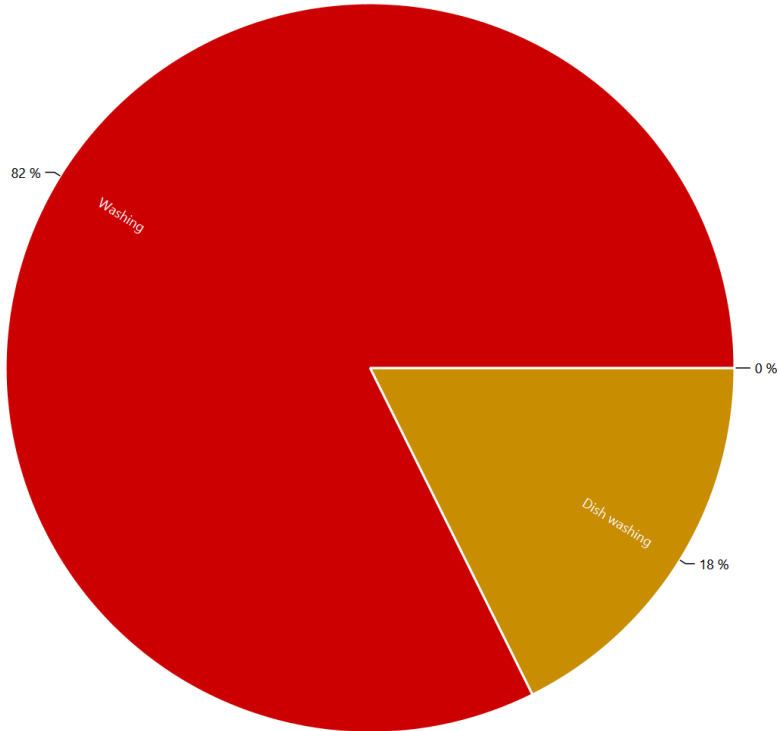
This is made from the files starting with: DeviceTaggingSet

The devices in the LPG can be grouped with various criteria by the device tagging sets. These charts show the results.

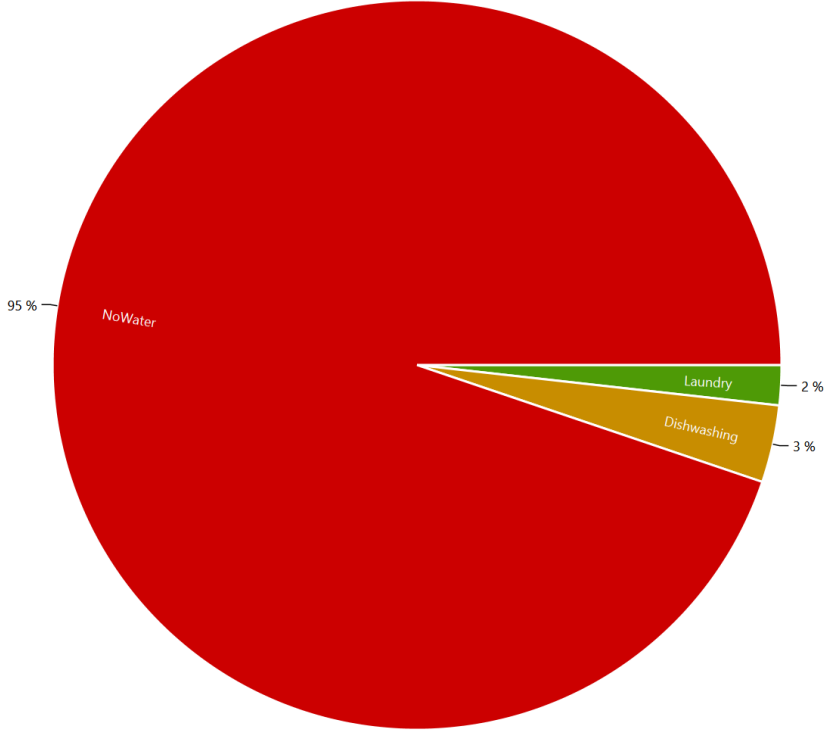
HH0 - Destatis Water Usage Statistics - Cold Water



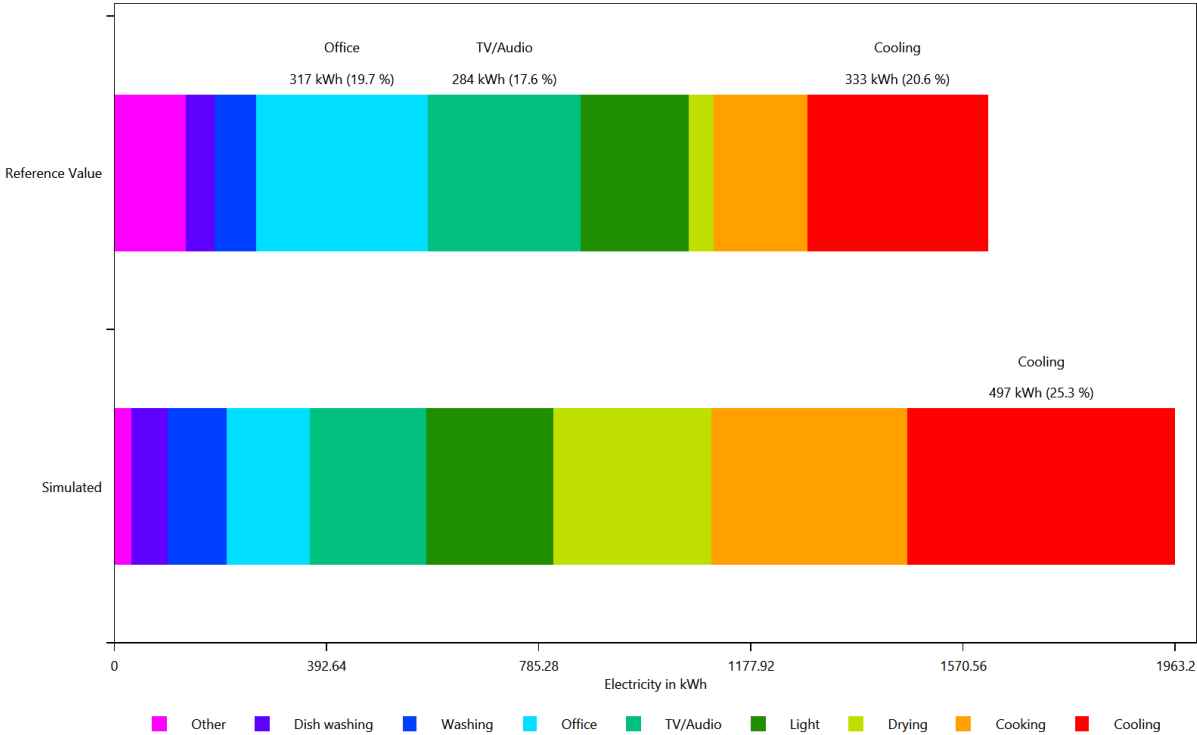
HH0 - Energieagentur - Cold Water



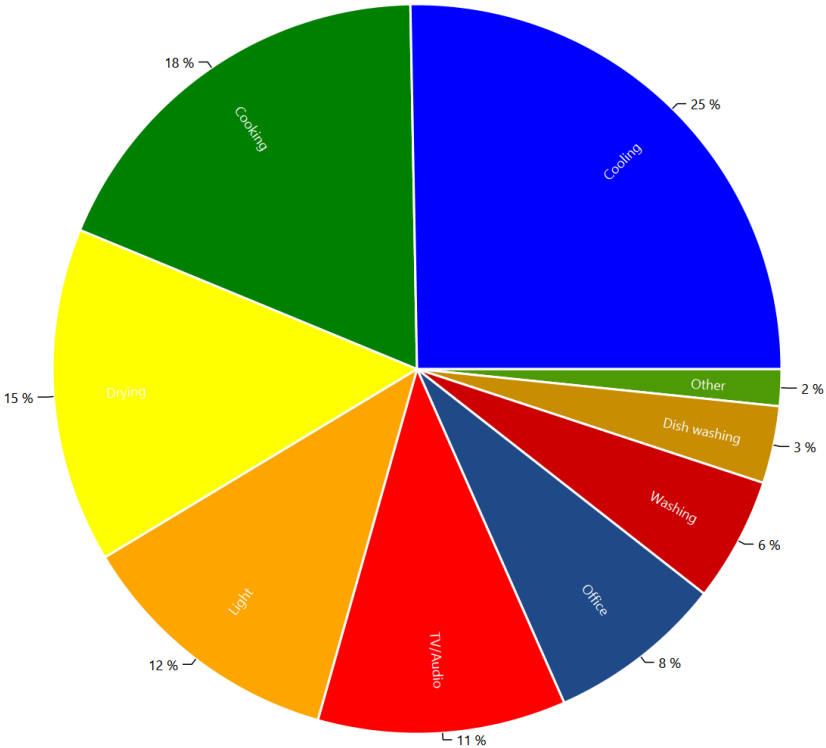
HH0 - Destatis Water Usage Statistics - Electricity



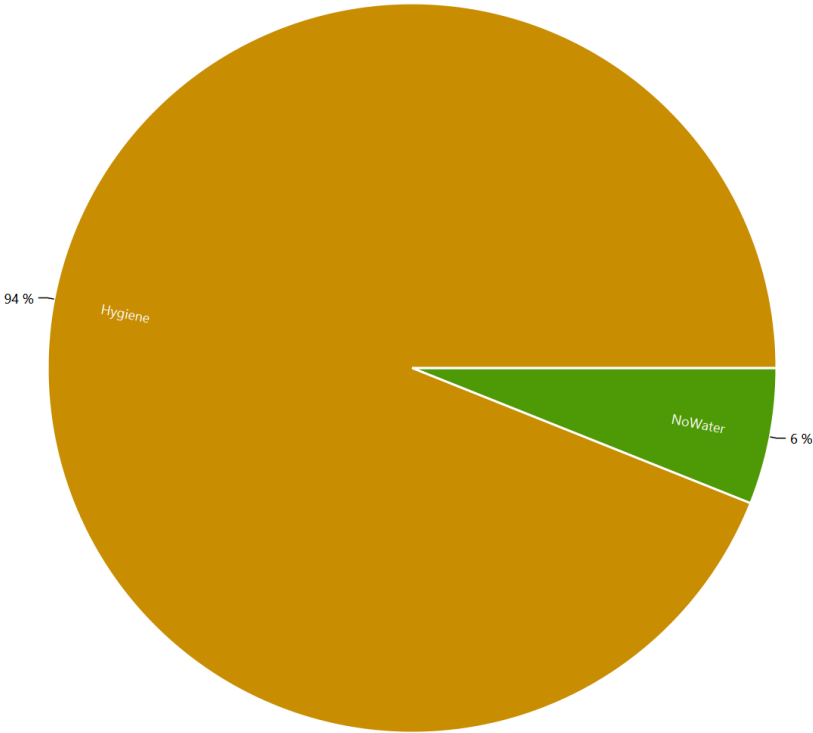
HH0 - Energieagentur - Electricity



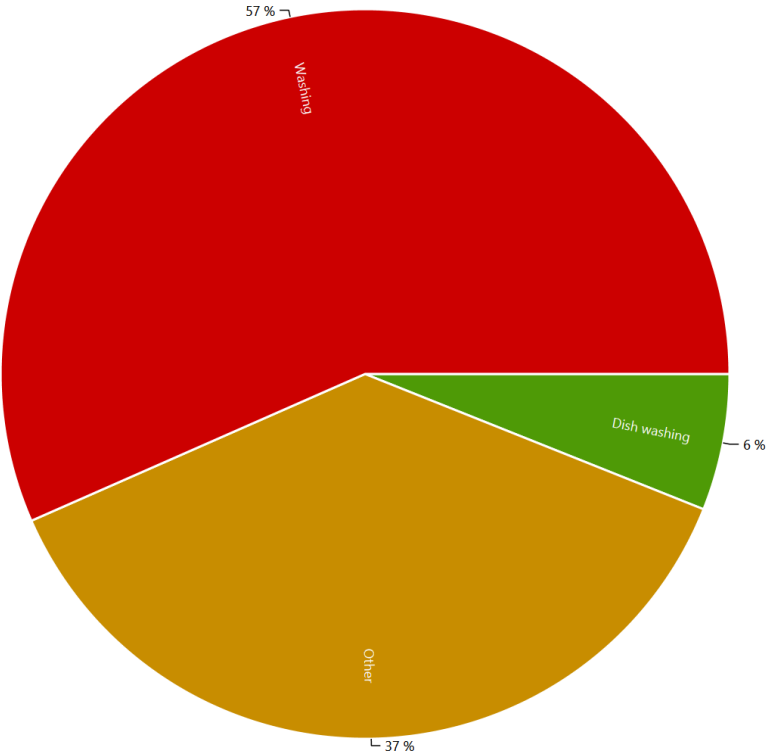
HH0 - Energieagentur - Electricity



HH0 - Destatis Water Usage Statistics - Warm Water



HH0 - Energieagentur - Warm Water

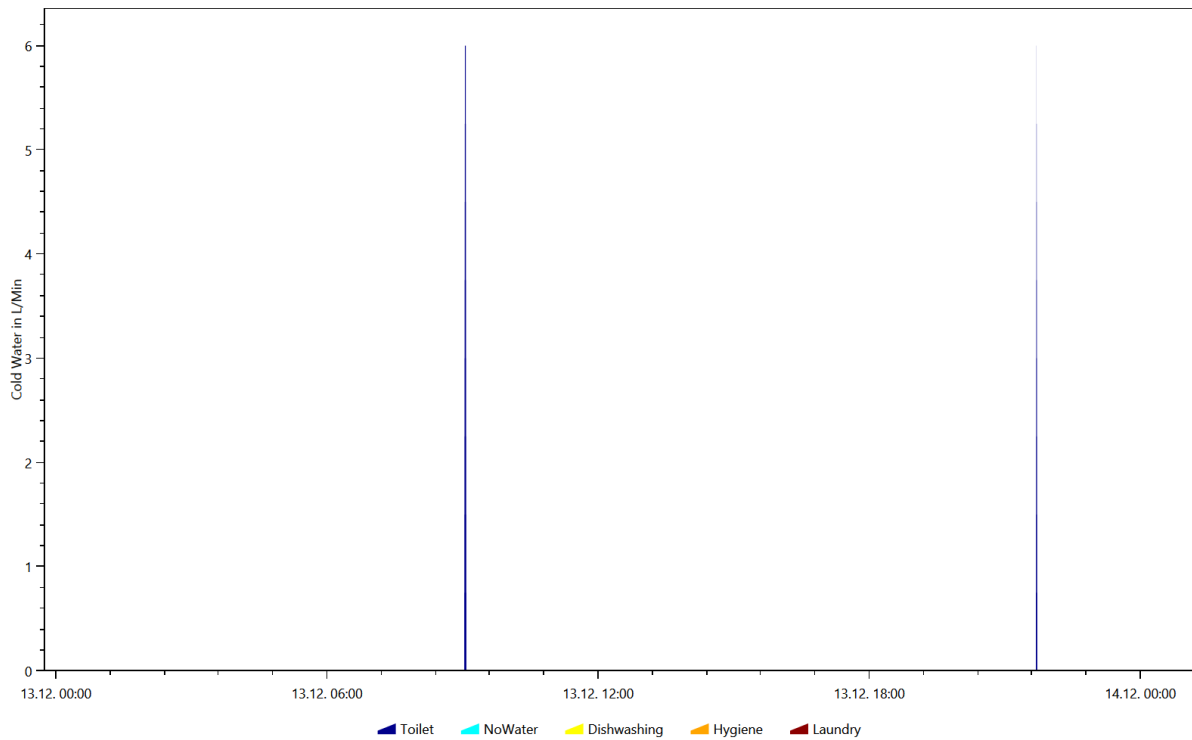


Example of the device profiles for each load type

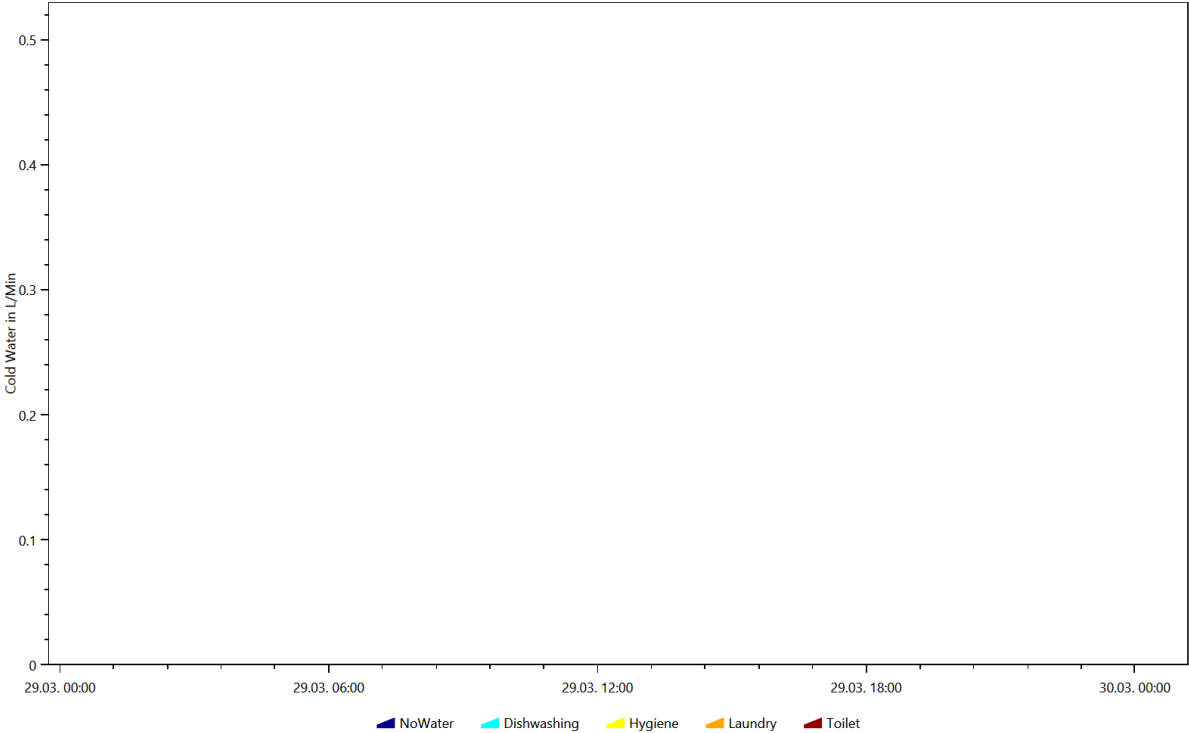
This is made from the files starting with: DeviceProfiles

The device profile files are the reason for the LPG. They show the power consumption of each device.

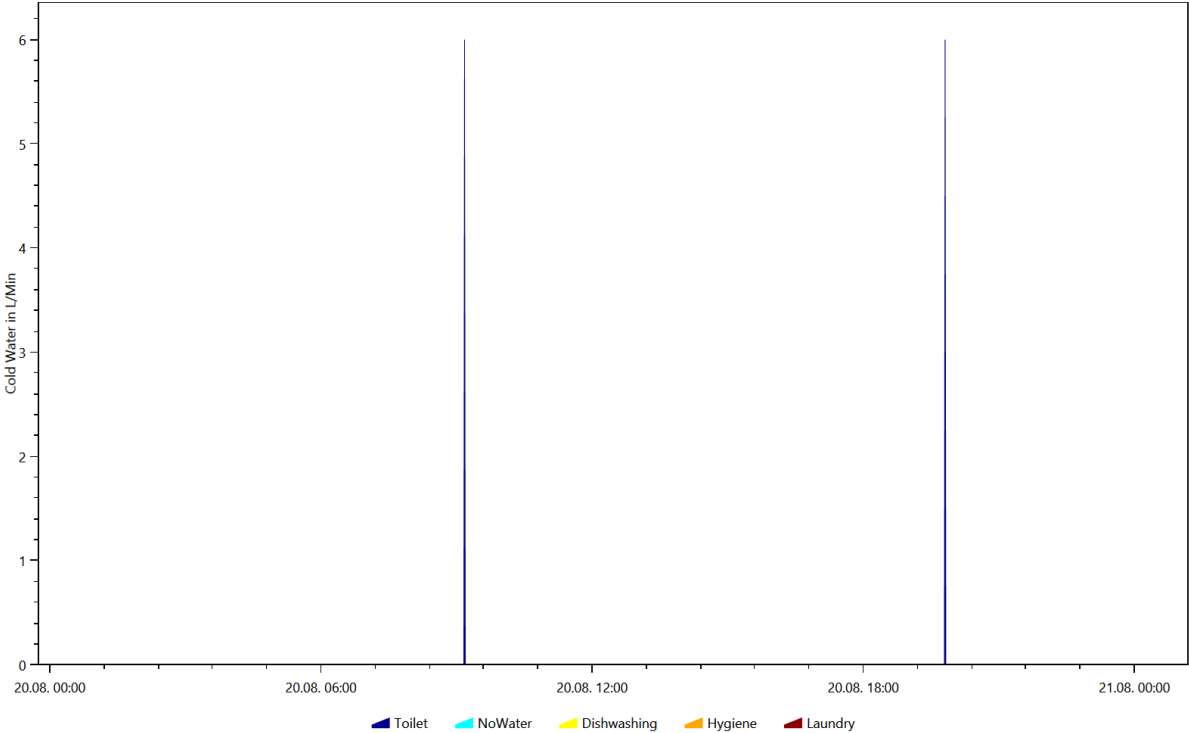
Cold Water, Coloring Scheme: Destatis Water Usage Statistics, Date 2016.12.13



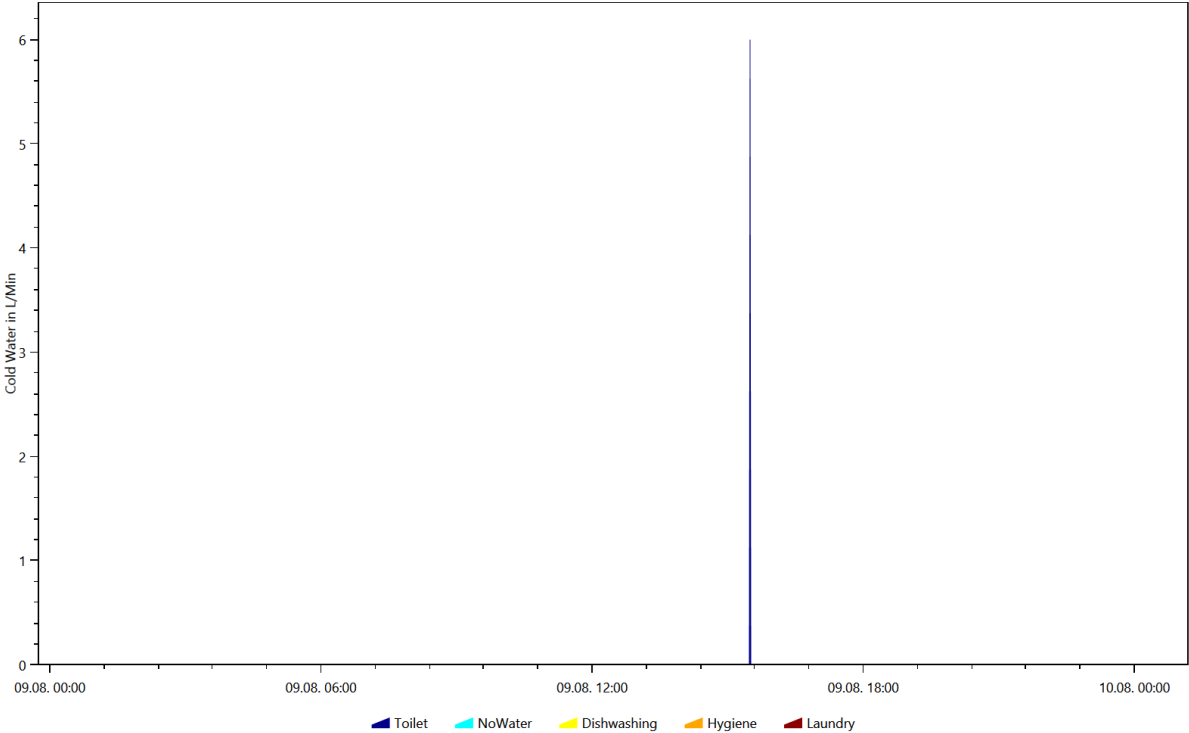
Cold Water, Coloring Scheme: Destatis Water Usage Statistics, Date 2016.3.29



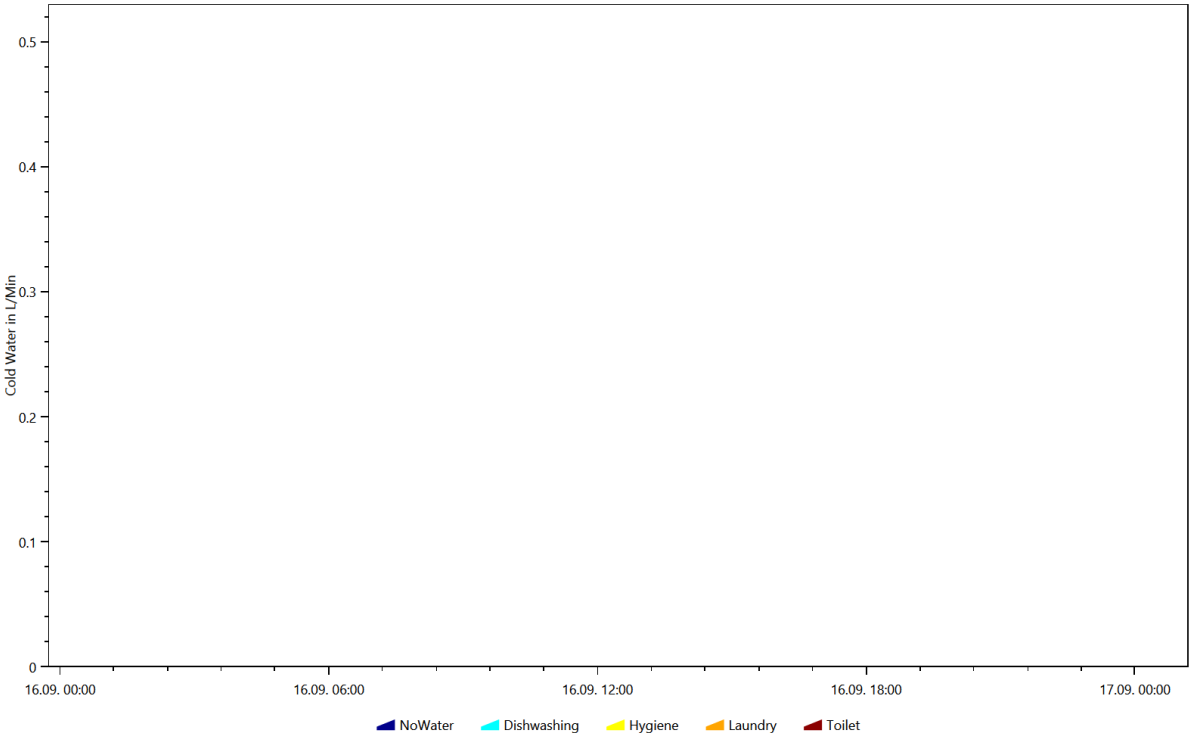
Cold Water, Coloring Scheme: Destatis Water Usage Statistics, Date 2016.8.20



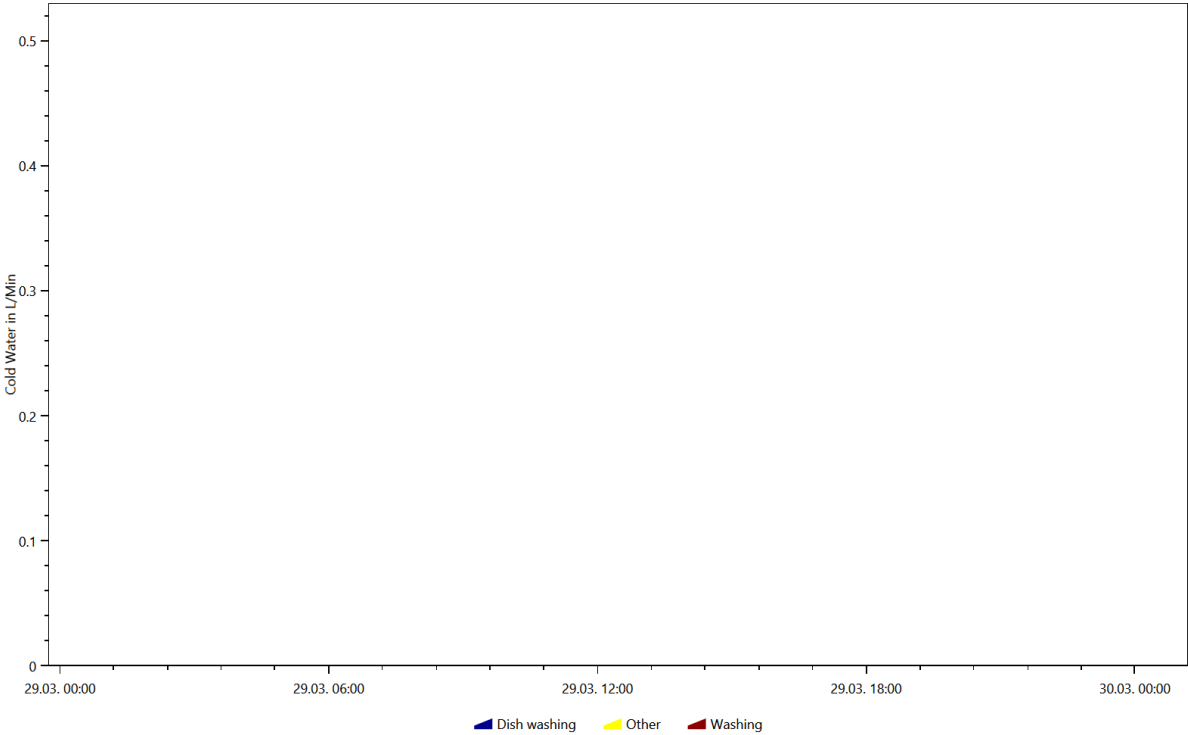
Cold Water, Coloring Scheme: Destatis Water Usage Statistics, Date 2016.8.9



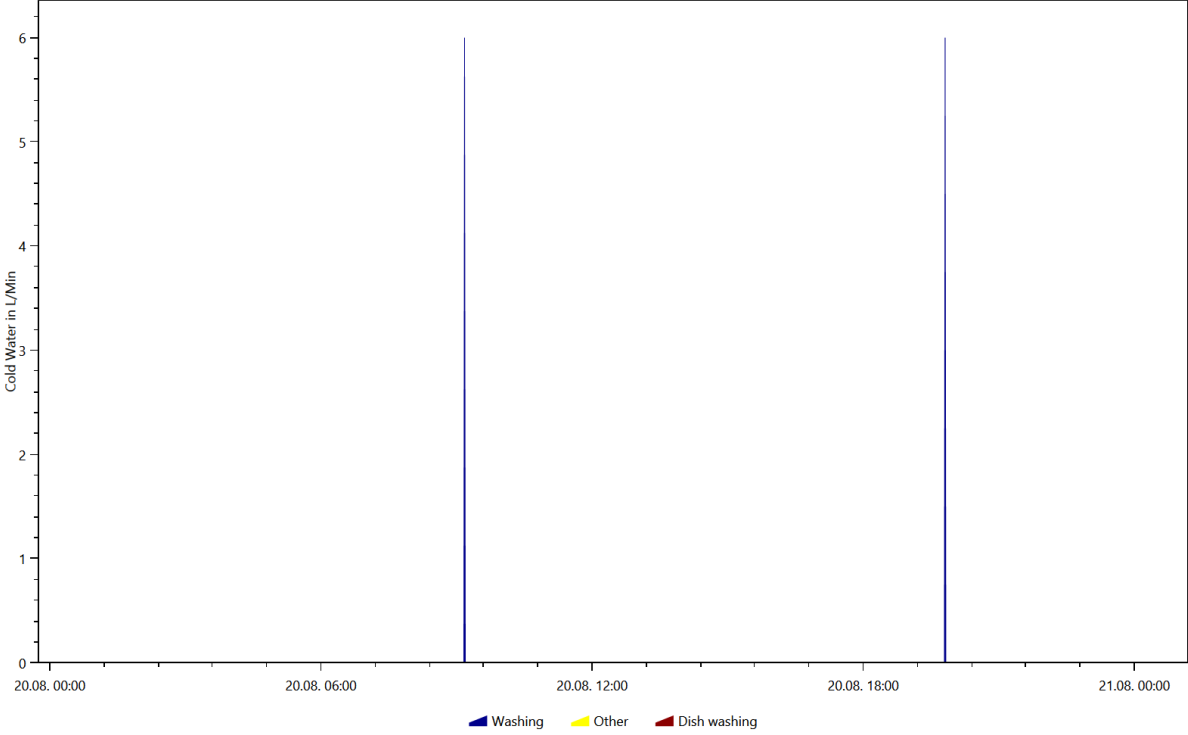
Cold Water, Coloring Scheme: Destatis Water Usage Statistics, Date 2016.9.16



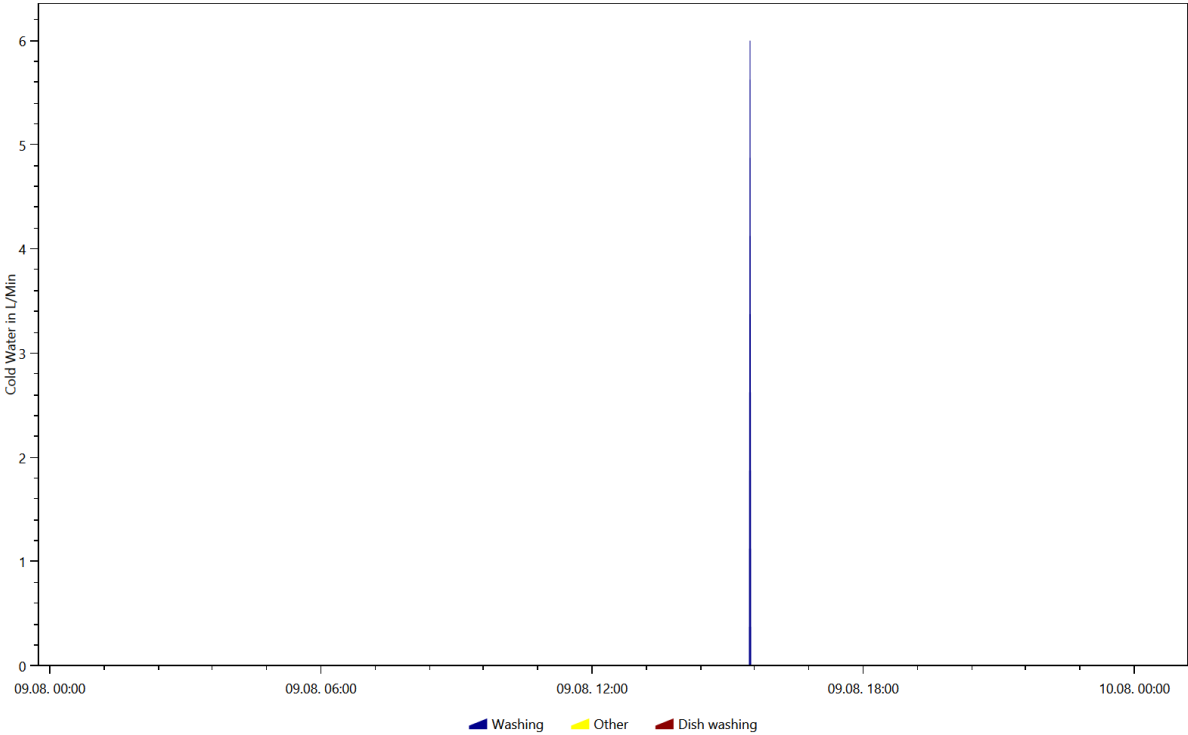
Cold Water, Coloring Scheme: Energieagentur.NRW Tags, Date 2016.3.29



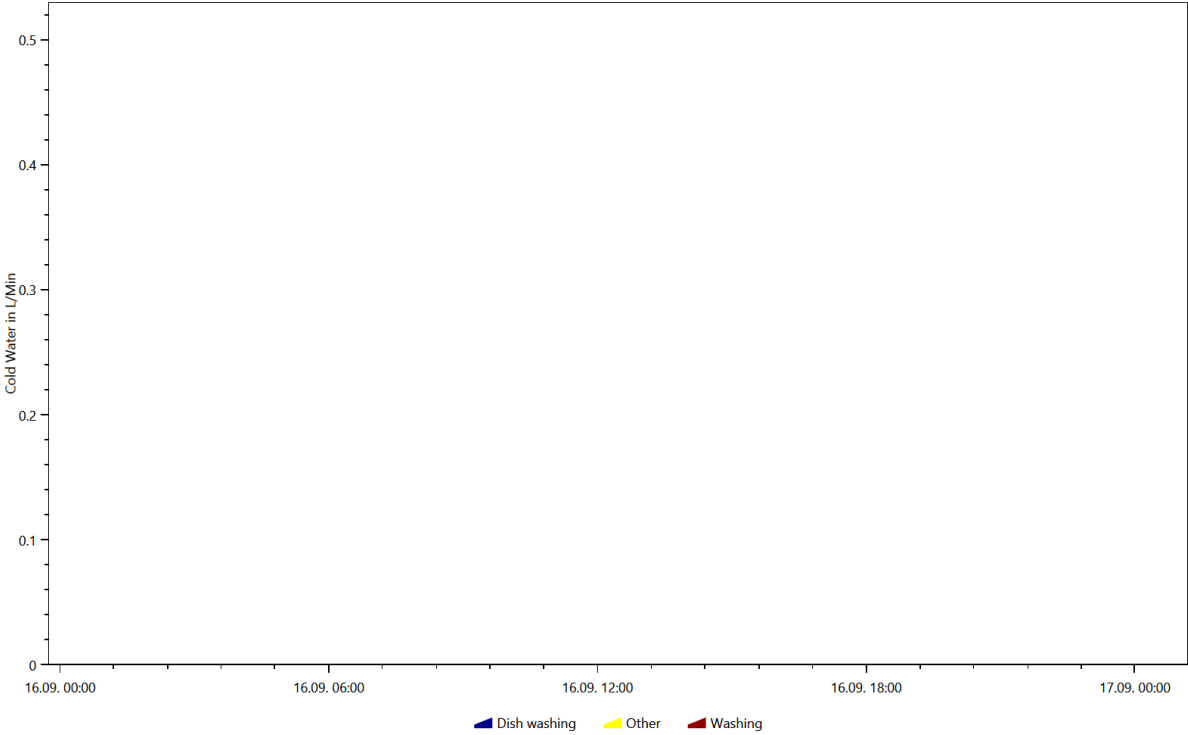
Cold Water, Coloring Scheme: Energieagentur.NRW Tags, Date 2016.8.20



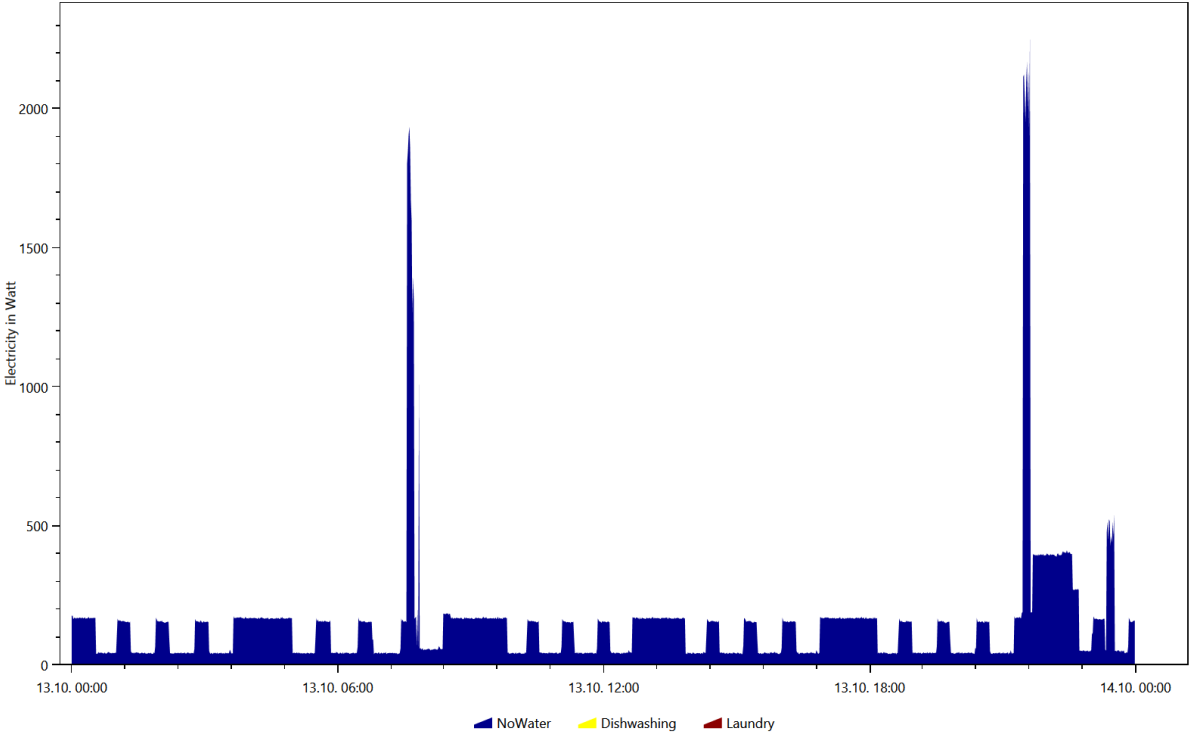
Cold Water, Coloring Scheme: Energieagentur.NRW Tags, Date 2016.8.9



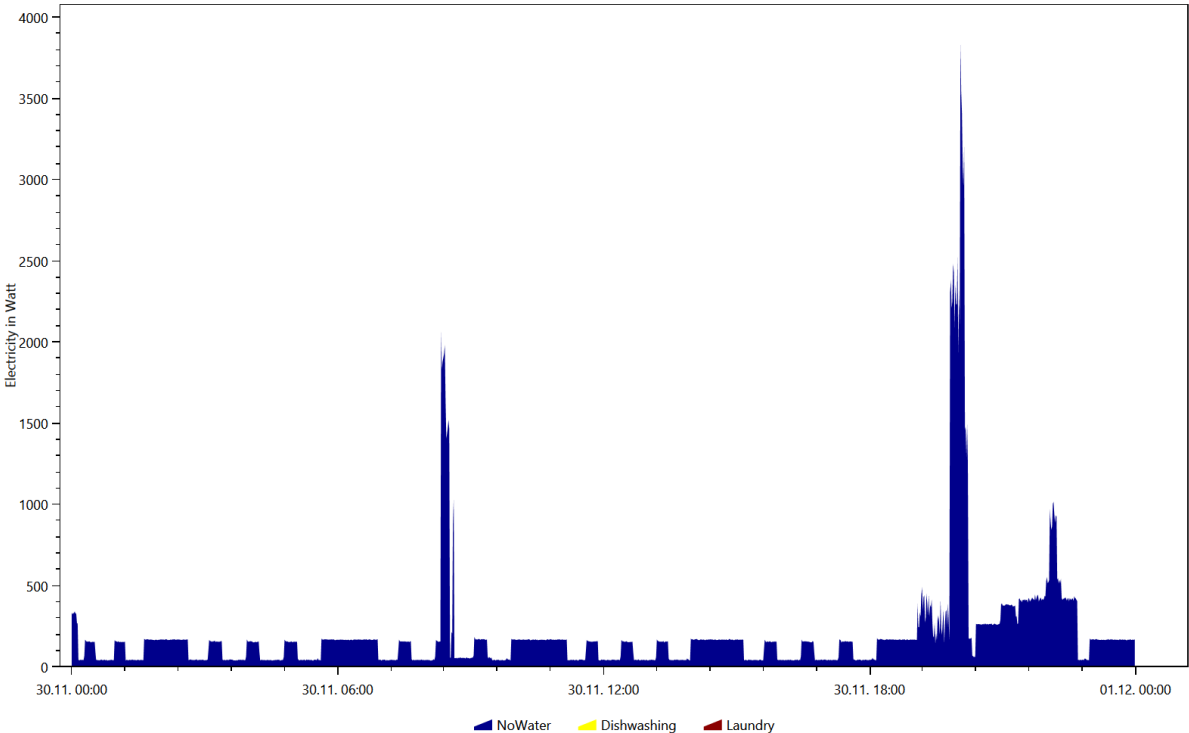
Cold Water, Coloring Scheme: Energieagentur.NRW Tags, Date 2016.9.16



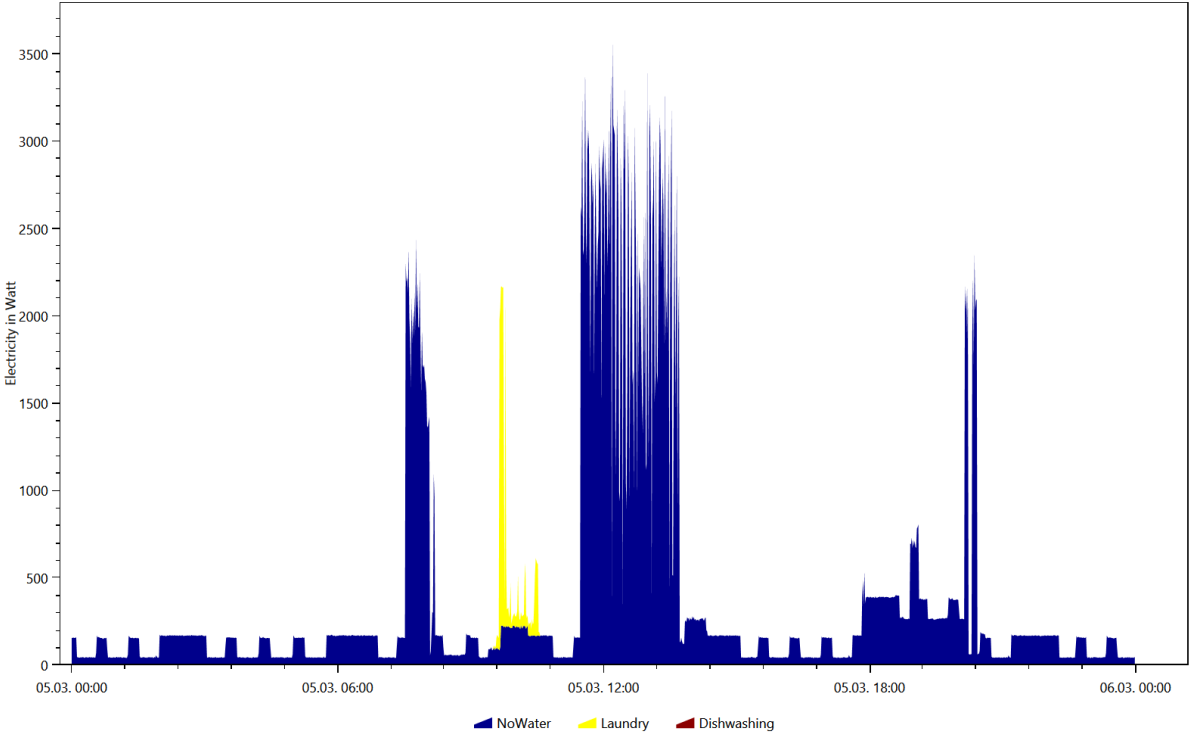
Electricity, Coloring Scheme: Destatis Water Usage Statistics, Date 2016.10.13



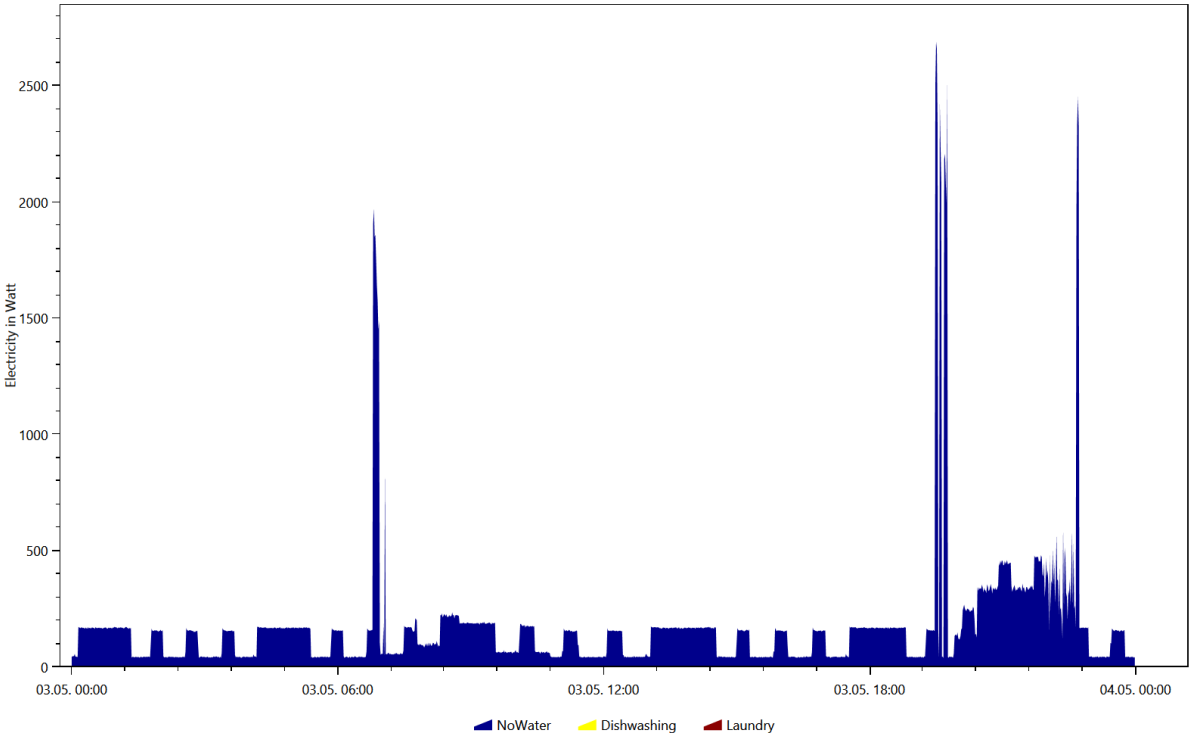
Electricity, Coloring Scheme: Destatis Water Usage Statistics, Date 2016.11.30



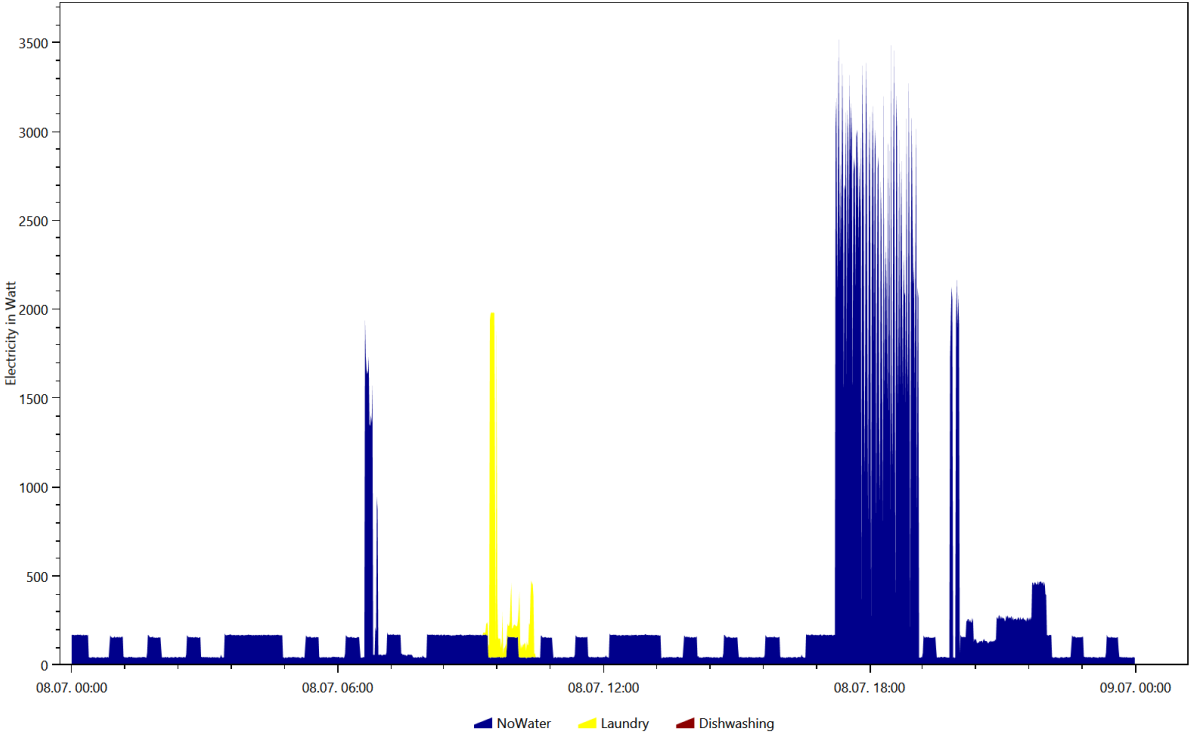
Electricity, Coloring Scheme: Destatis Water Usage Statistics, Date 2016.3.5



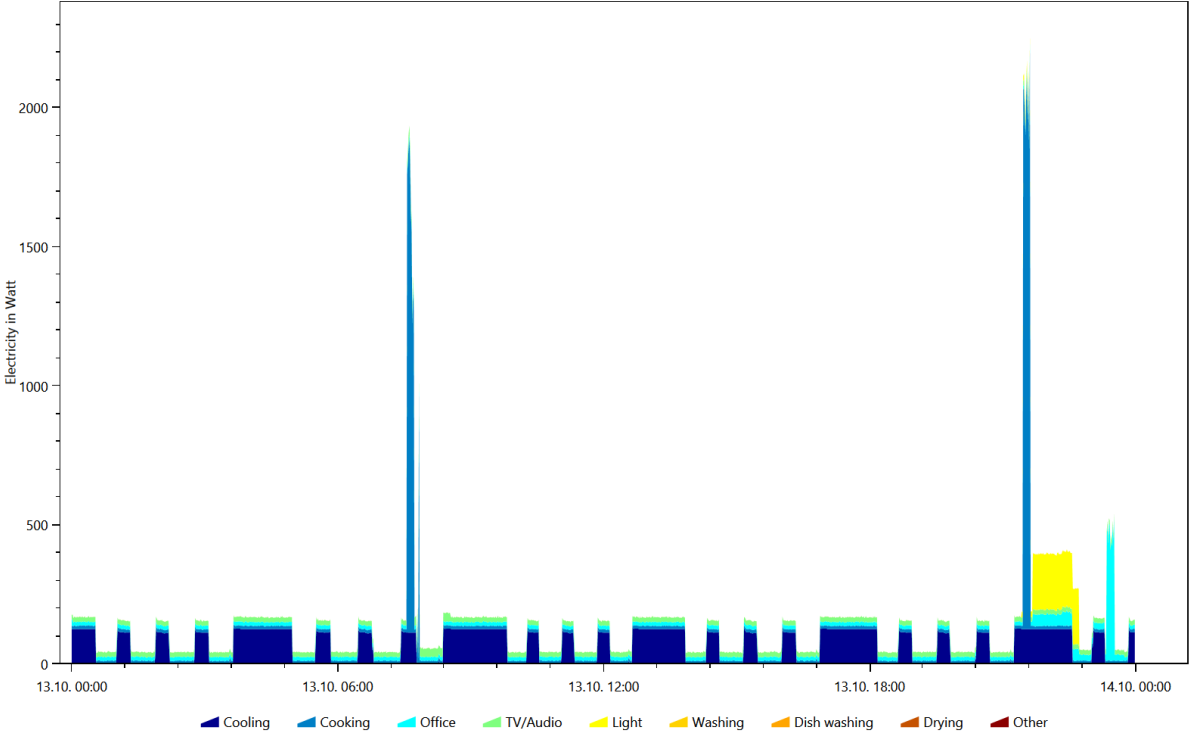
Electricity, Coloring Scheme: Destatis Water Usage Statistics, Date 2016.5.3



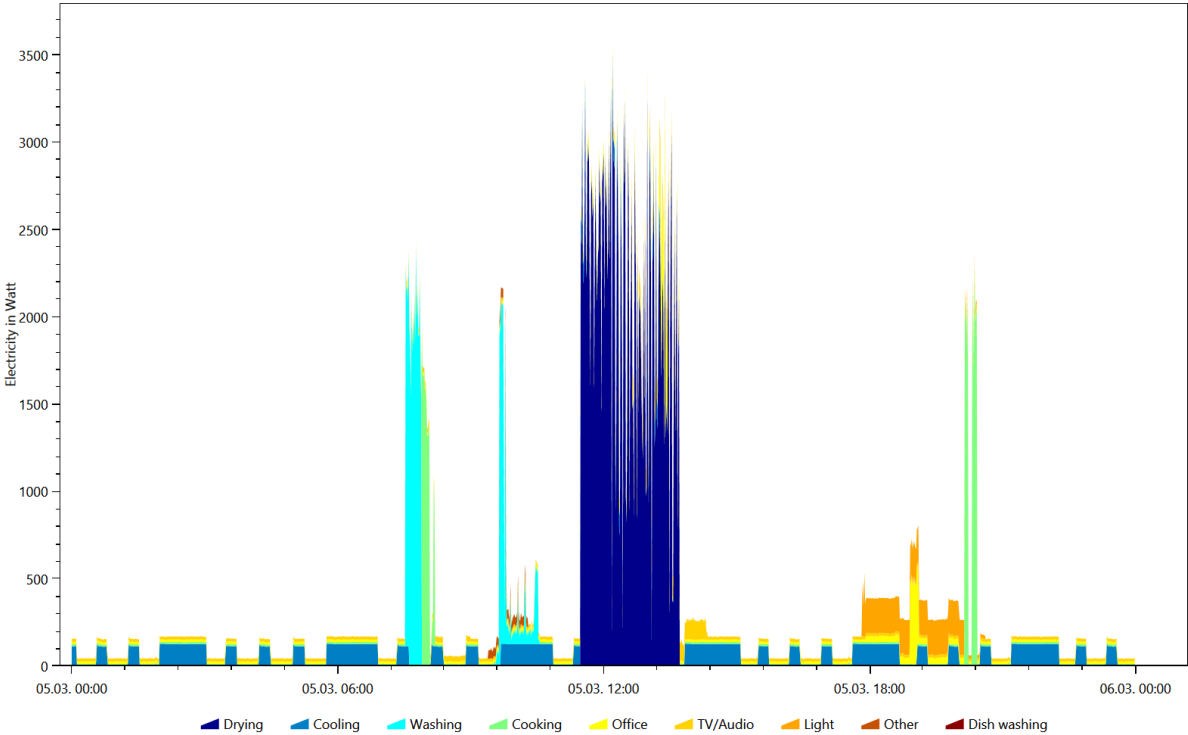
Electricity, Coloring Scheme: Destatis Water Usage Statistics, Date 2016.7.8



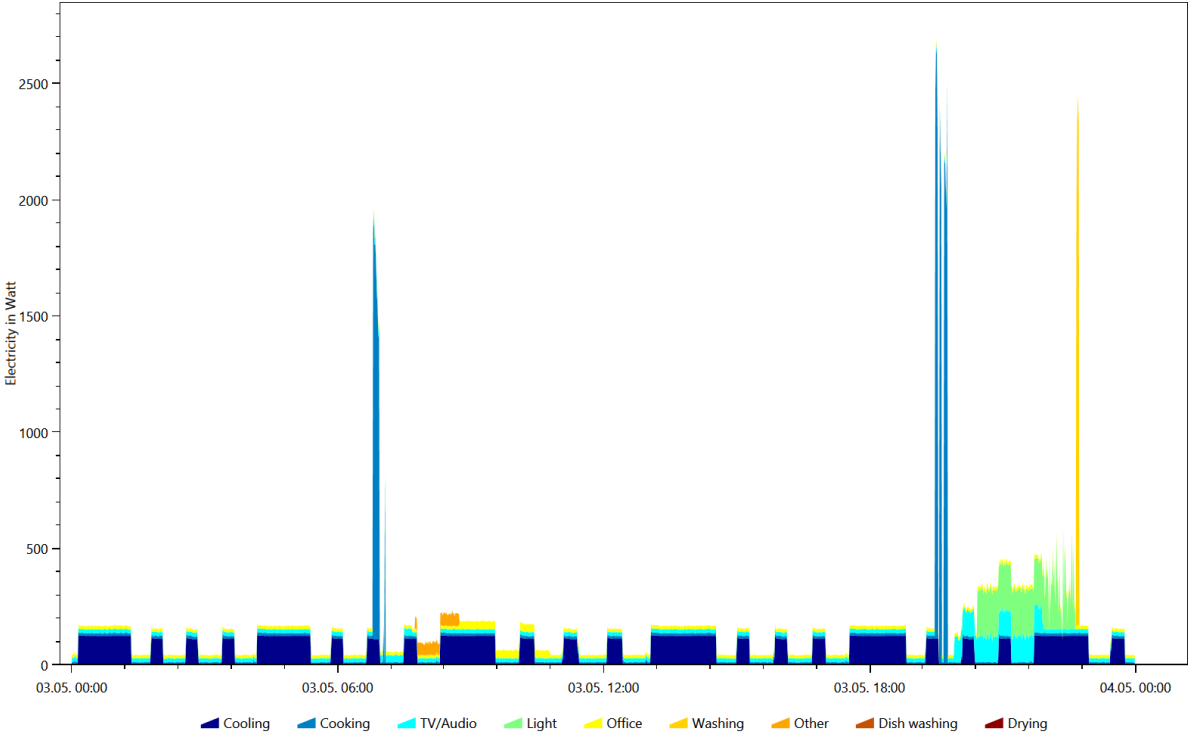
Electricity, Coloring Scheme: Energieagentur.NRW Tags, Date 2016.10.13



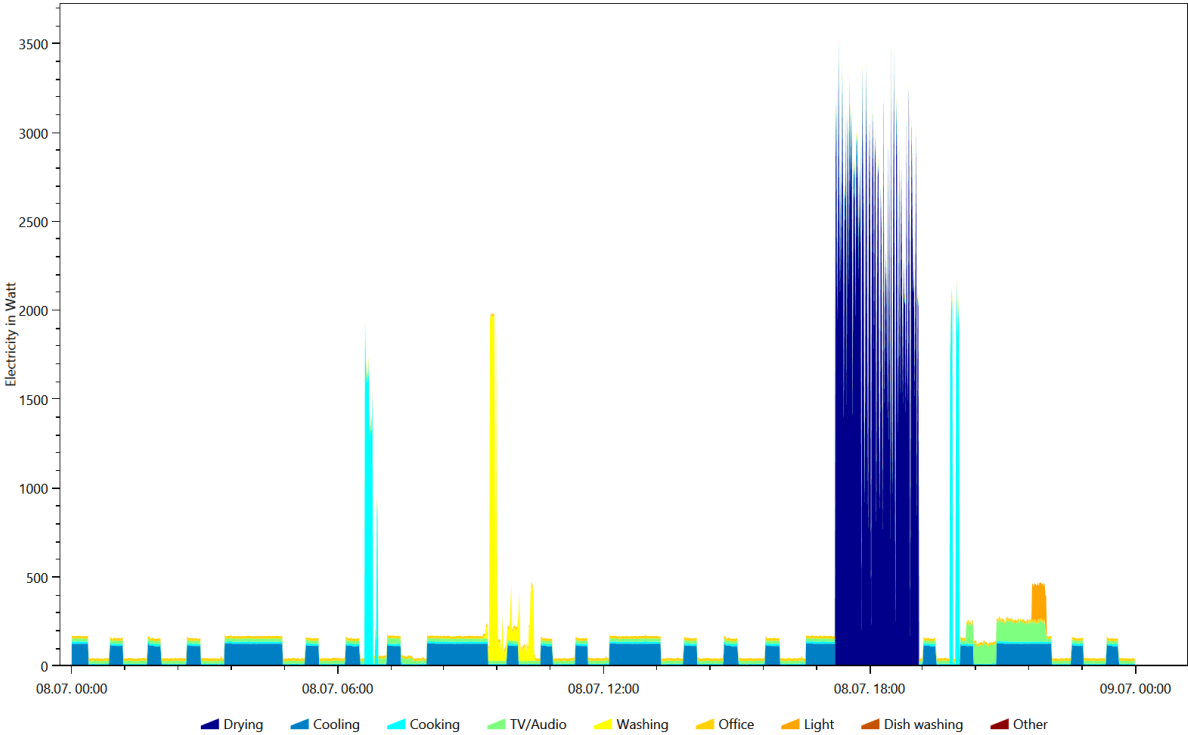
Electricity, Coloring Scheme: Energieagentur.NRW Tags, Date 2016.3.5



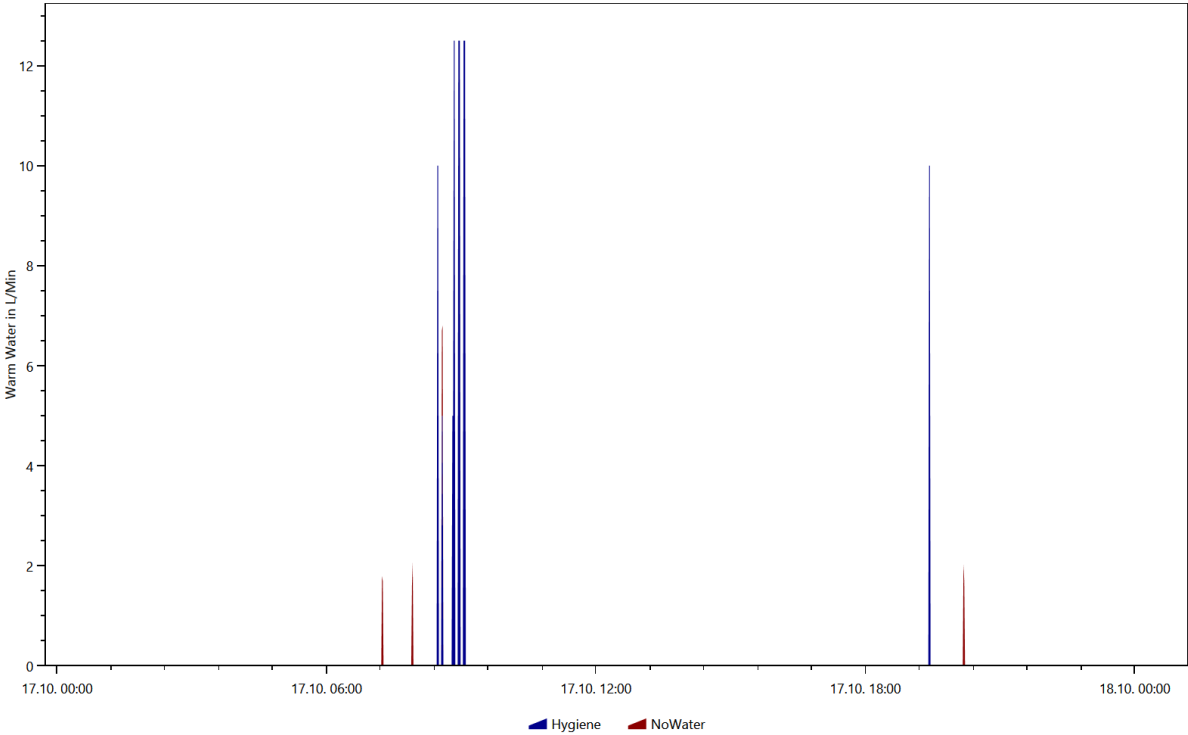
Electricity, Coloring Scheme: Energieagentur.NRW Tags, Date 2016.5.3



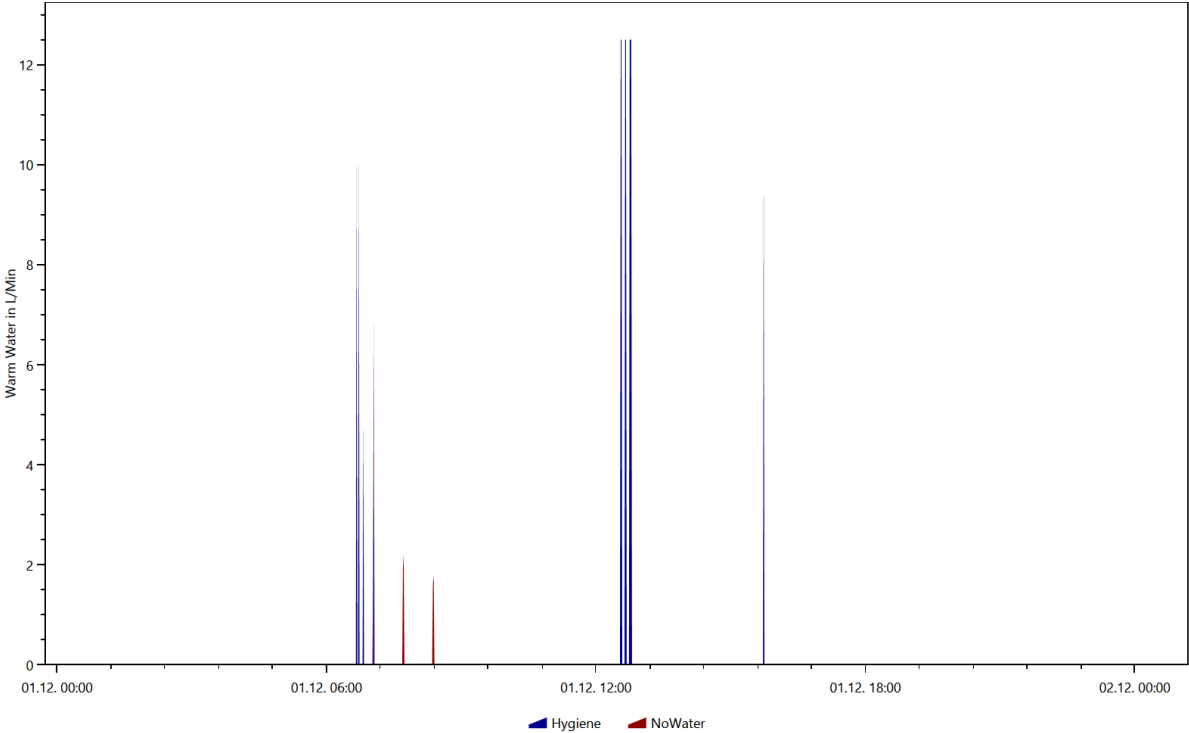
Electricity, Coloring Scheme: Energieagentur.NRW Tags, Date 2016.7.8



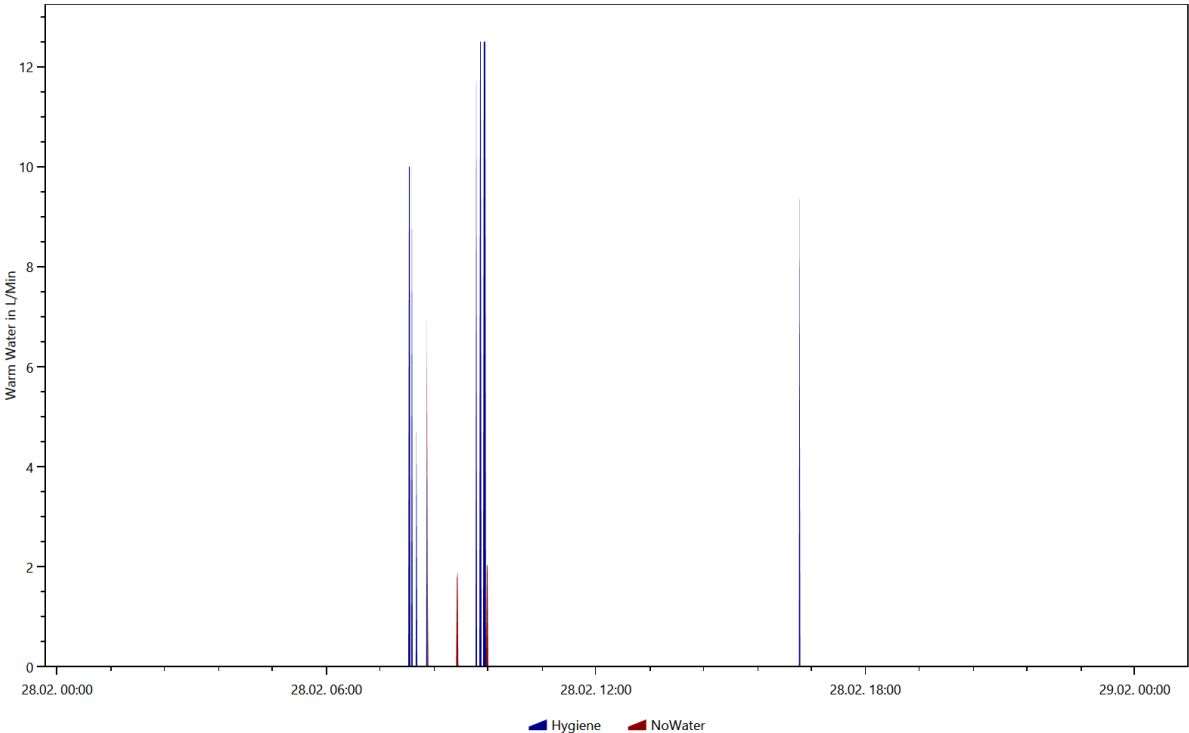
Warm Water, Coloring Scheme: Destatis Water Usage Statistics, Date 2016.10.17



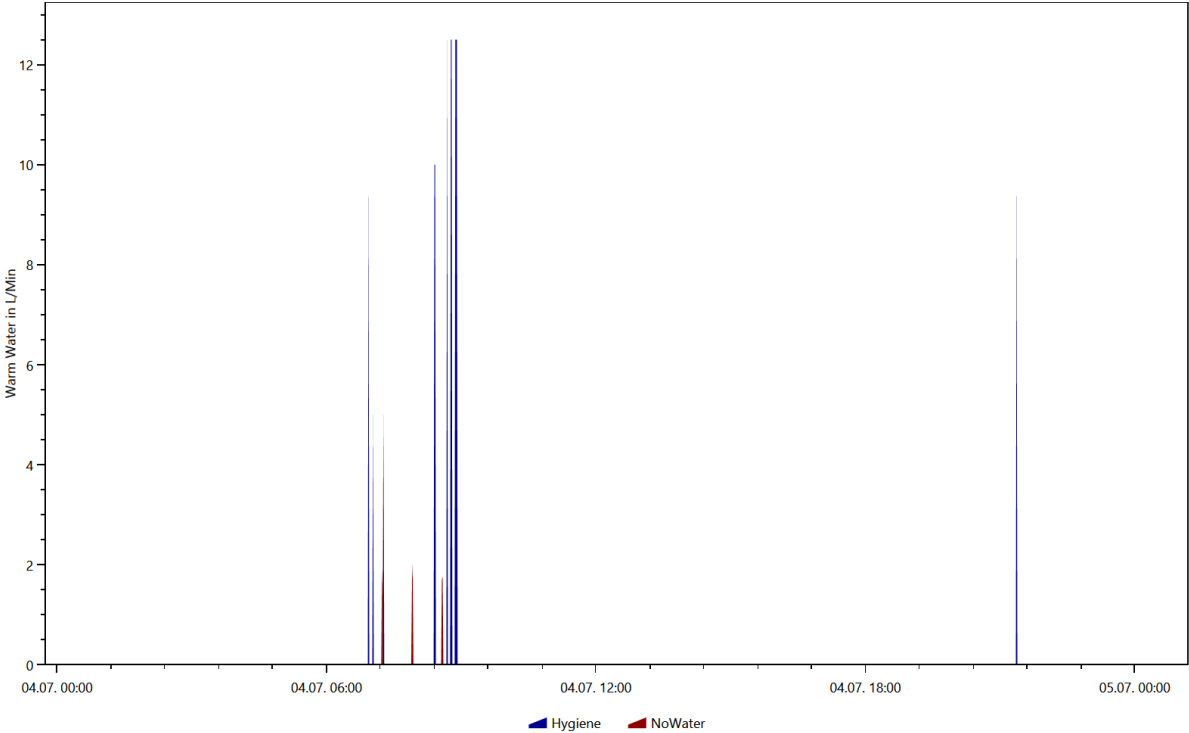
Warm Water, Coloring Scheme: Destatis Water Usage Statistics, Date 2016.12.1



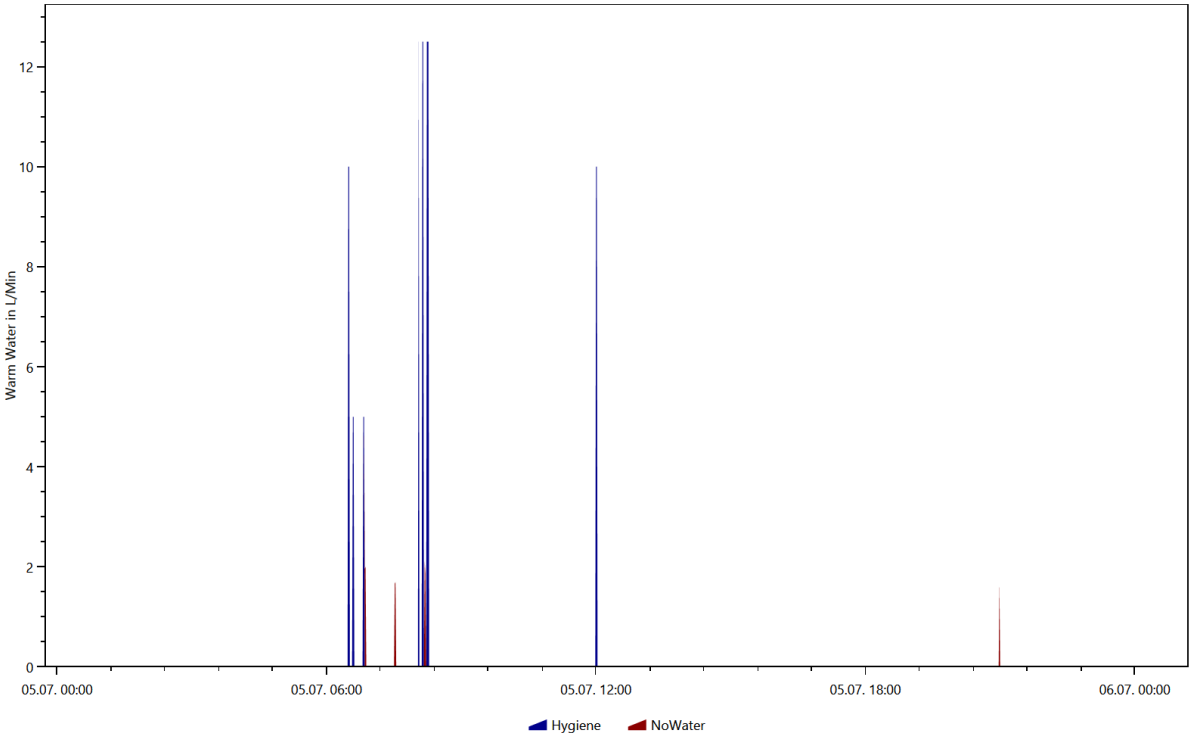
Warm Water, Coloring Scheme: Destatis Water Usage Statistics, Date 2016.2.28



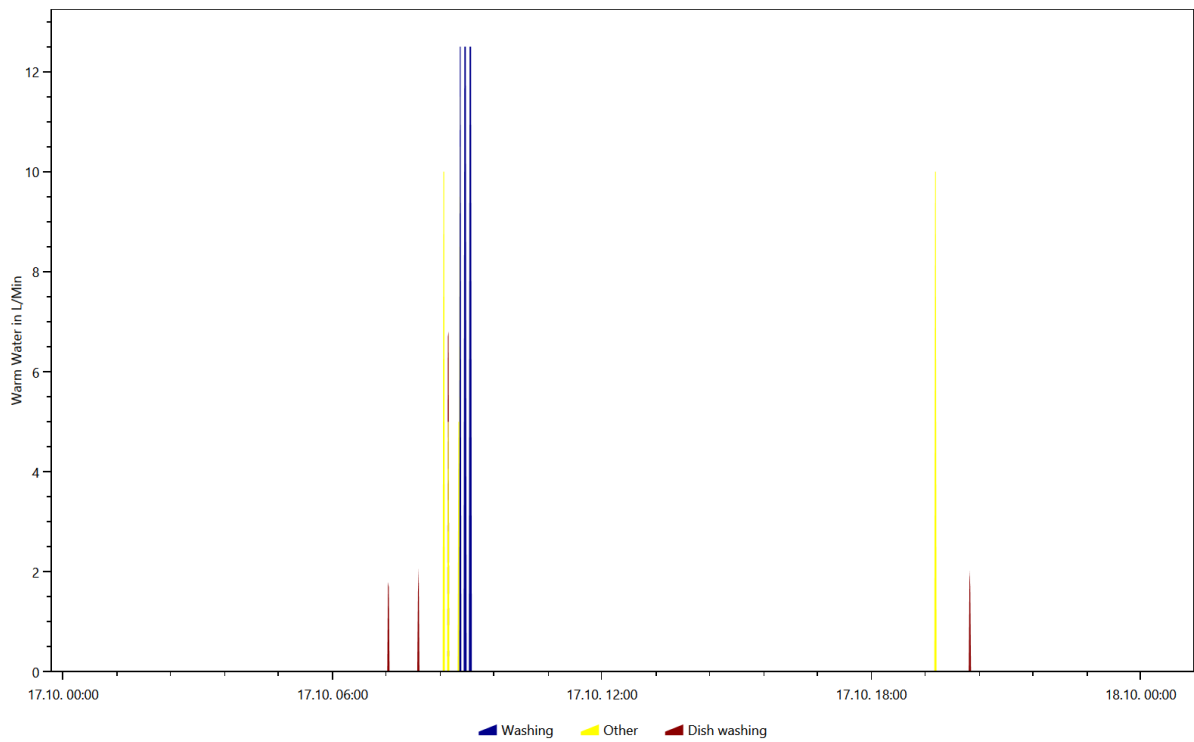
Warm Water, Coloring Scheme: Destatis Water Usage Statistics, Date 2016.7.4



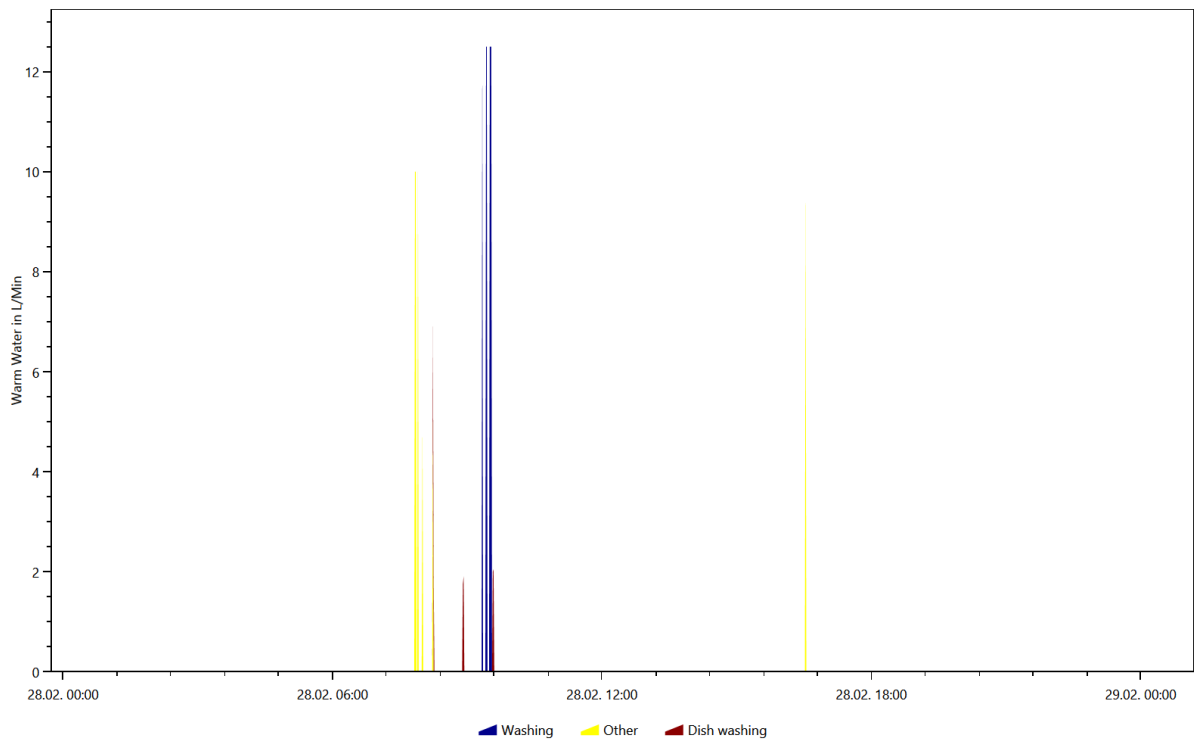
Warm Water, Coloring Scheme: Destatis Water Usage Statistics, Date 2016.7.5



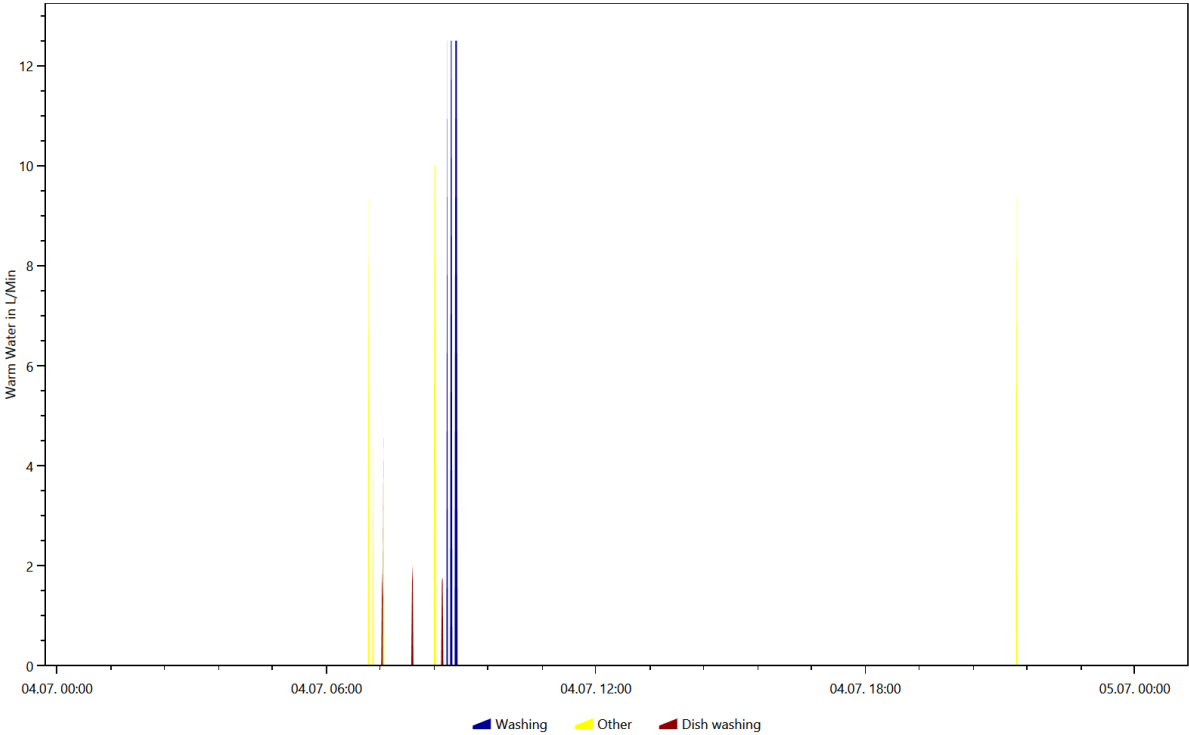
Warm Water, Coloring Scheme: Energieagentur.NRW Tags, Date 2016.10.17



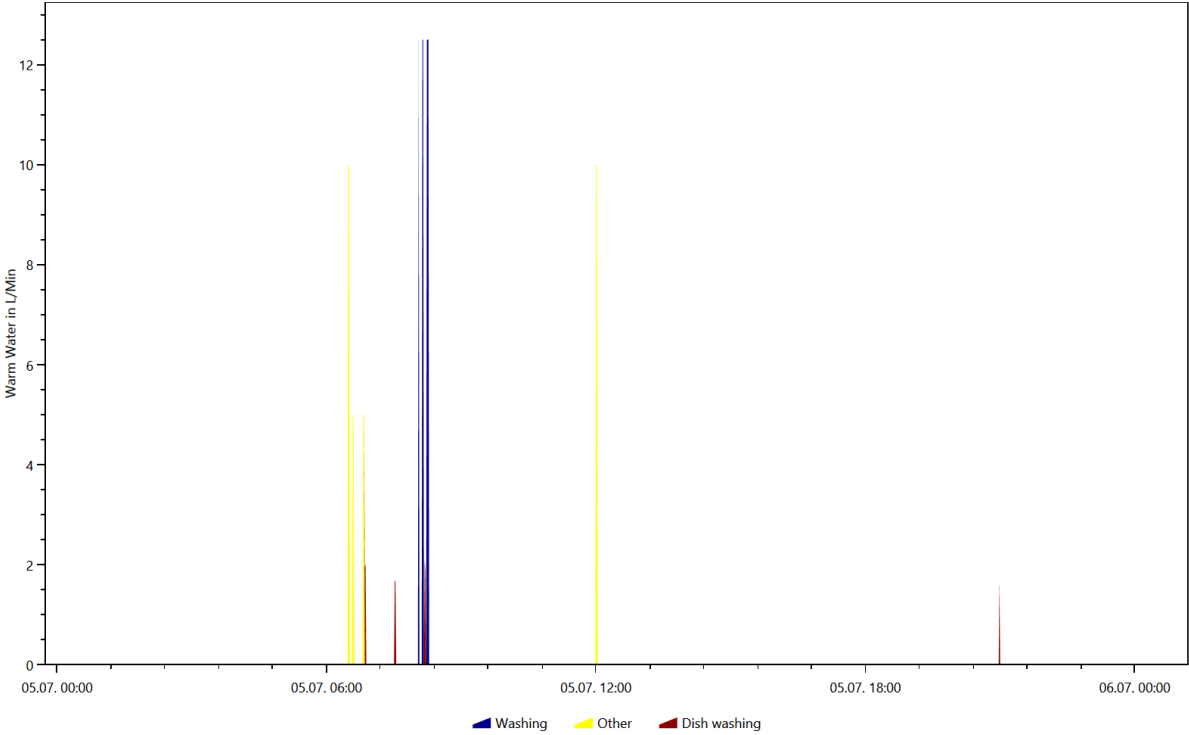
Warm Water, Coloring Scheme: Energieagentur.NRW Tags, Date 2016.2.28



Warm Water, Coloring Scheme: Energieagentur.NRW Tags, Date 2016.7.4



Warm Water, Coloring Scheme: Energieagentur.NRW Tags, Date 2016.7.5

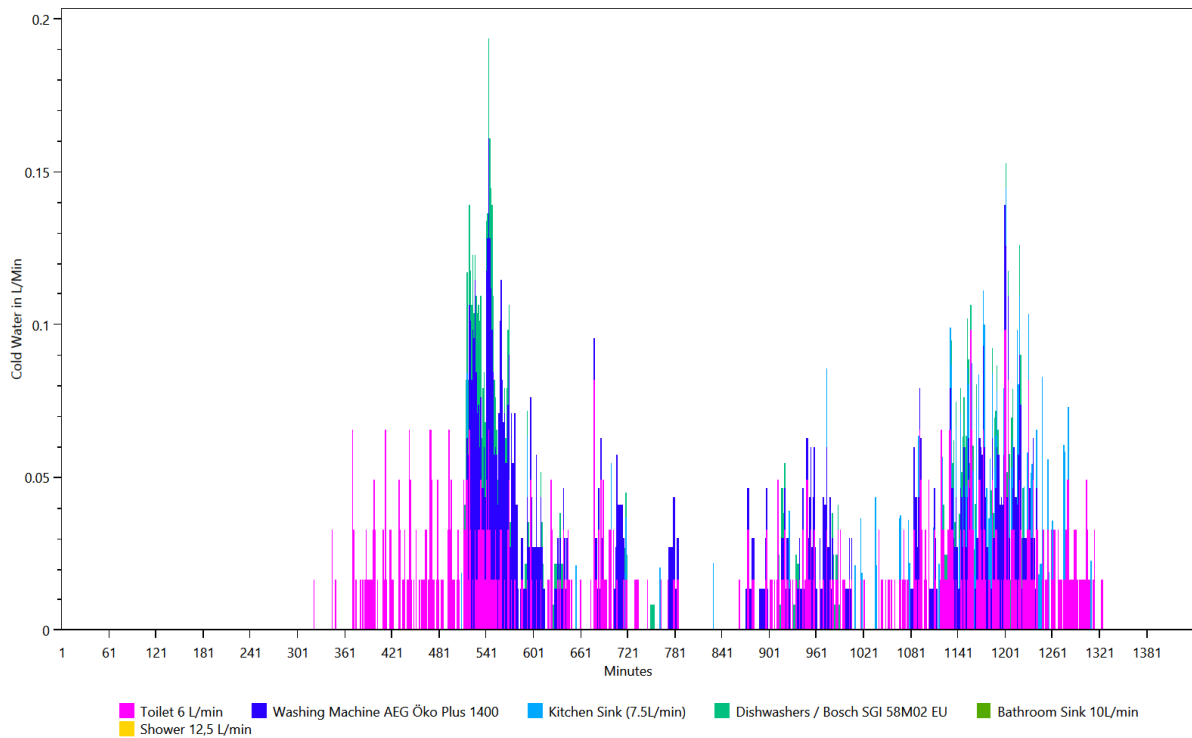


Overview of the time and power of the use per load type per device

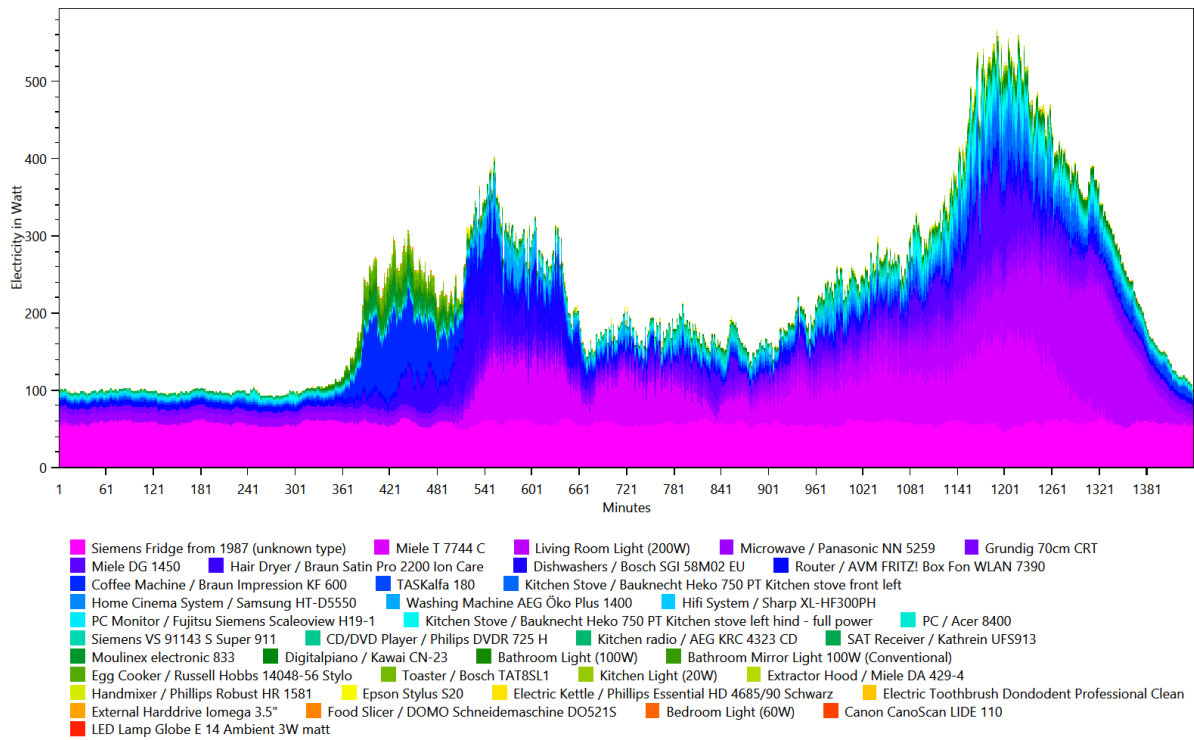
This is made from the files starting with: **TimeOfUseEnergyProfiles**

The time of use energy profiles show when each device was used and how much power it used.

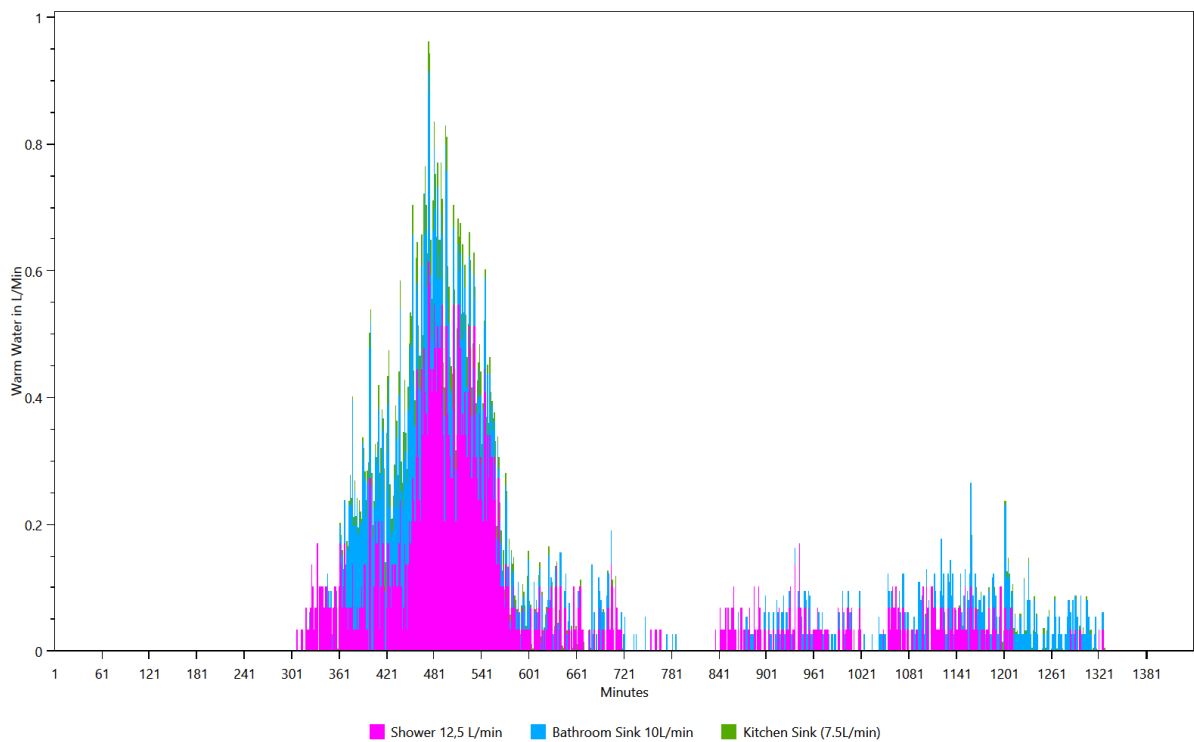
Cold Water



Electricity



Warm Water

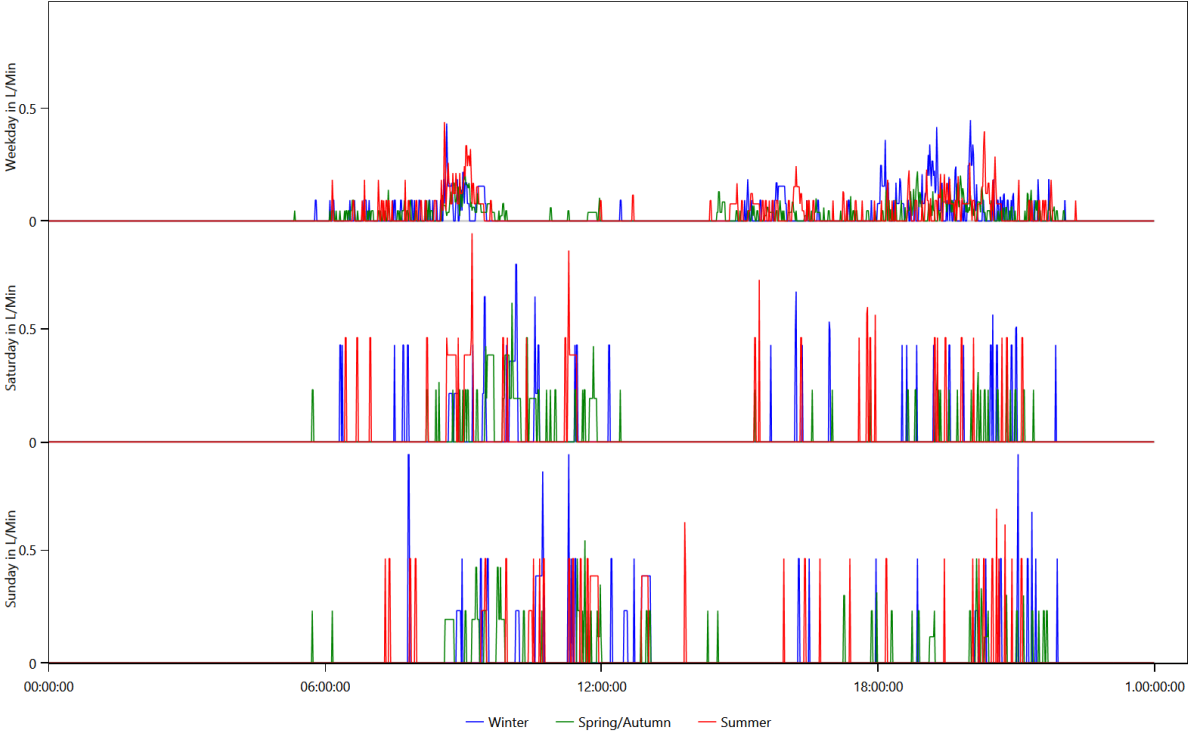


Energy use per load type during different seasons, split by weekday/saturday/sunday

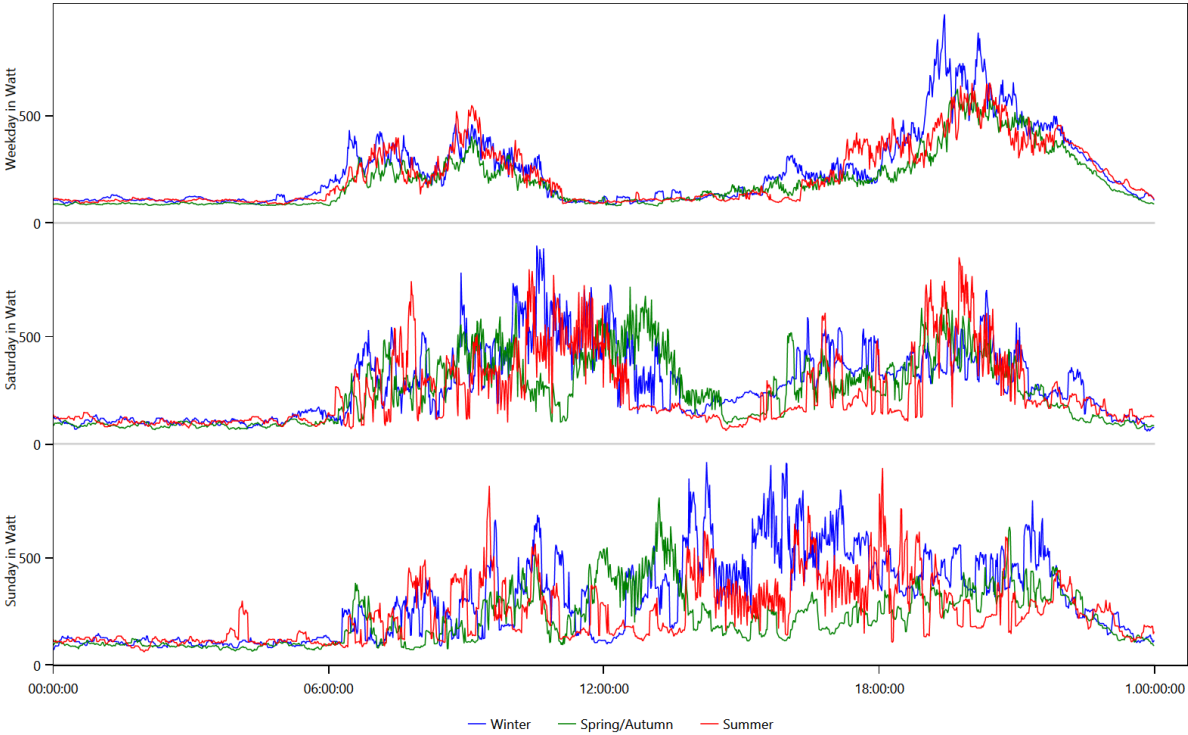
This is made from the files starting with: WeekdayProfiles

This graph shows for each load type the average power consumption per day grouped by season and weekday/saturday/sunday.

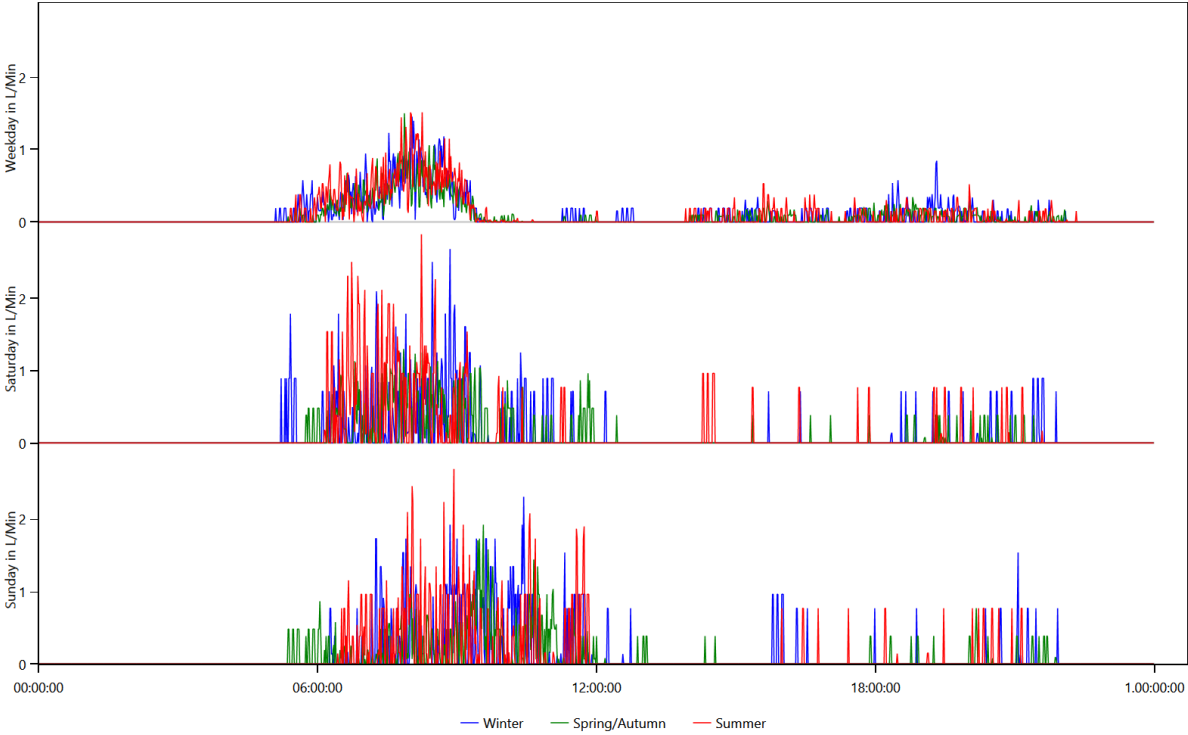
Cold Water



Electricity



Warm Water

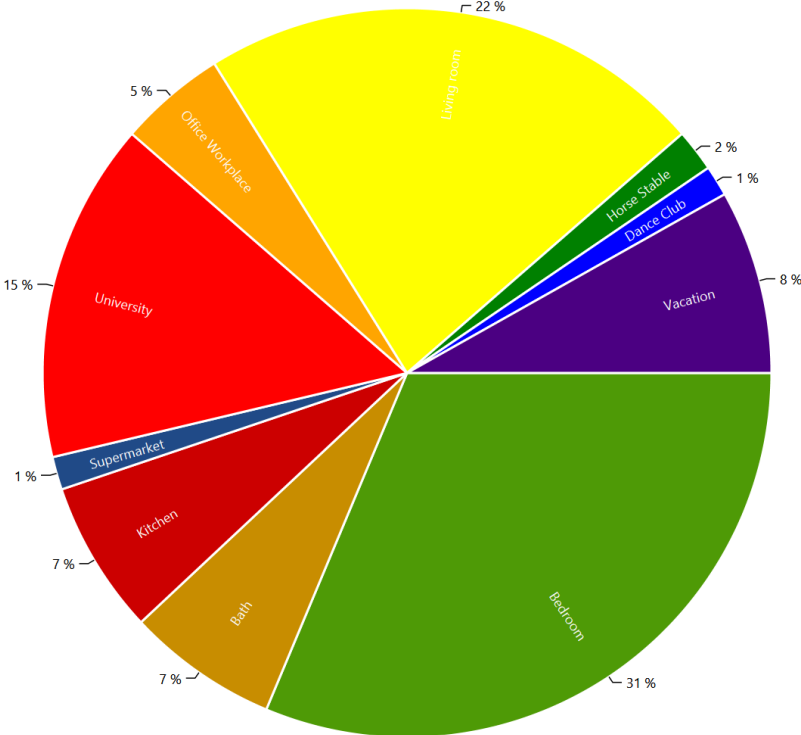


Location Distribution per Person

This is made from the files starting with: LocationStatistics

These charts show where the persons spend their time.

CHR13 Iris 2 (22 Female)



Actions.csv

This is made from the files starting with: Actions

These files show the actions of each person in the household. The content looks like this:

Actions.HH0.csv

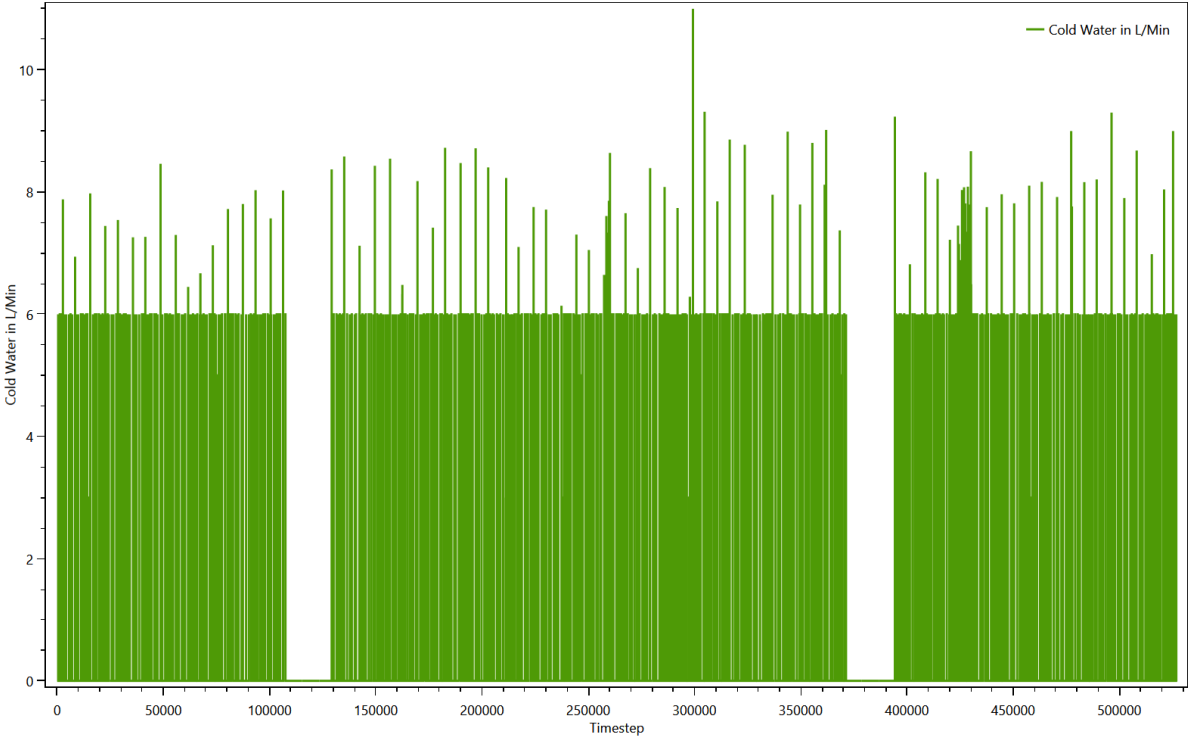
Time step;Calendertime;Person;Selected affordance;Affordance Category;Is Sick
0;01.01.2016 00:00;CHR13 Iris 2 (22/Female);sleep bed 08 (08 h);sleep;False;
364;01.01.2016 06:04;CHR13 Iris 2 (22/Female);get ready in the morning (women);hygiene;False;
385;01.01.2016 06:25;CHR13 Iris 2 (22/Female);eat breakfast (1 h);cooking;False;
448;01.01.2016 07:28;CHR13 Iris 2 (22/Female);go to the toilet;hygiene;False;
453;01.01.2016 07:33;CHR13 Iris 2 (22/Female);go shopping for food in the supermarket (1.5
h);shopping;False;
552;01.01.2016 09:12;CHR13 Iris 2 (22/Female);take a shower with hair washing (women) (5 min hair
drying);hygiene;False;
610;01.01.2016 10:10;CHR13 Iris 2 (22/Female);study philosophy;school;False;
932;01.01.2016 15:32;CHR13 Iris 2 (22/Female);go to part time job;work;False;
1097;01.01.2016 18:17;CHR13 Iris 2 (22/Female);study at home;school;False;
1148;01.01.2016 19:08;CHR13 Iris 2 (22/Female);fry two eggs and eat them with toast;cooking;False;
1163;01.01.2016 19:23;CHR13 Iris 2 (22/Female);clean the bath;cleaning;False;
1229;01.01.2016 20:29;CHR13 Iris 2 (22/Female);go to the toilet;hygiene;False;
1235;01.01.2016 20:35;CHR13 Iris 2 (22/Female);play digital piano (1 h);Offline Entertainment;False;
1295;01.01.2016 21:35;CHR13 Iris 2 (22/Female);watch a movie for 2 h with home cinema system;Passive
Entertainment (TV etc.);False;
1402;01.01.2016 23:22;CHR13 Iris 2 (22/Female);sleep bed 08 (08 h);sleep;False;
1901;02.01.2016 07:41;CHR13 Iris 2 (22/Female);get ready in the morning (women);hygiene;False;
1920;02.01.2016 08:00;CHR13 Iris 2 (22/Female);eat breakfast (1 h);cooking;False;
1986;02.01.2016 09:06;CHR13 Iris 2 (22/Female);take a shower without hair washing (women);hygiene;False;
2036;02.01.2016 09:56;CHR13 Iris 2 (22/Female);use the computer (2 h);Active Entertainment (Computer,
Internet etc);False;

Sum Profiles

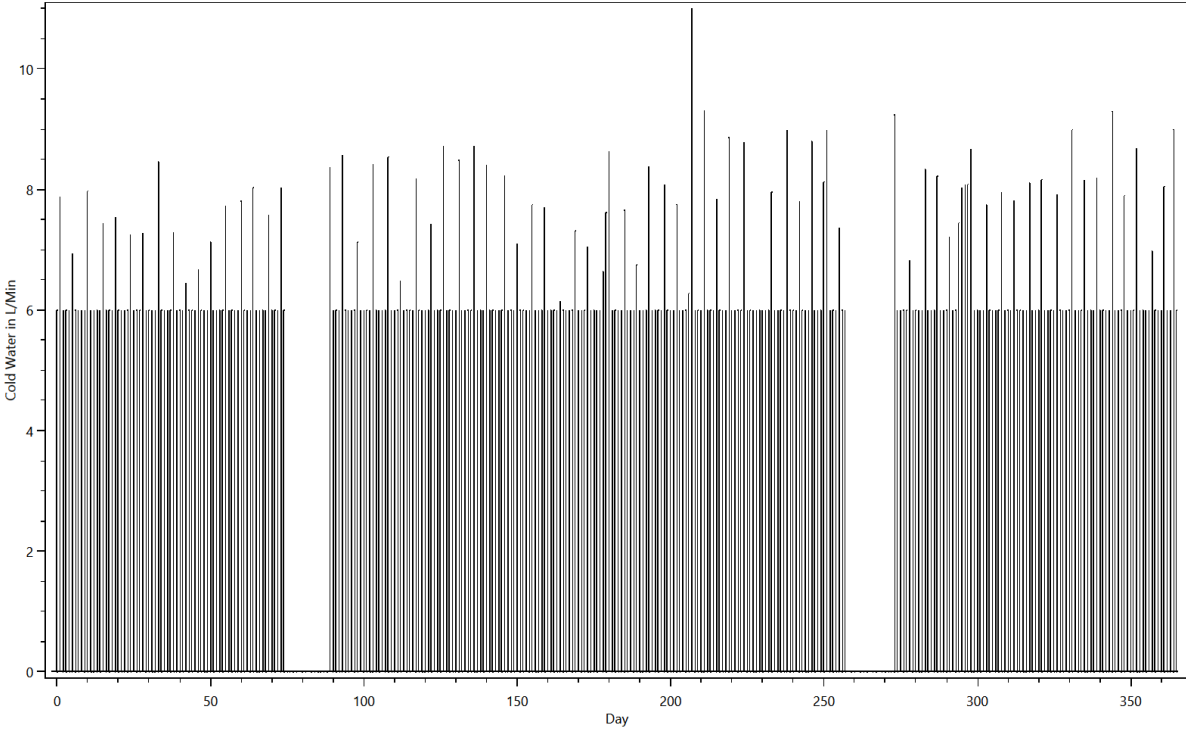
This is made from the files starting with: SumProfiles

This shows the energy use during the simulation.

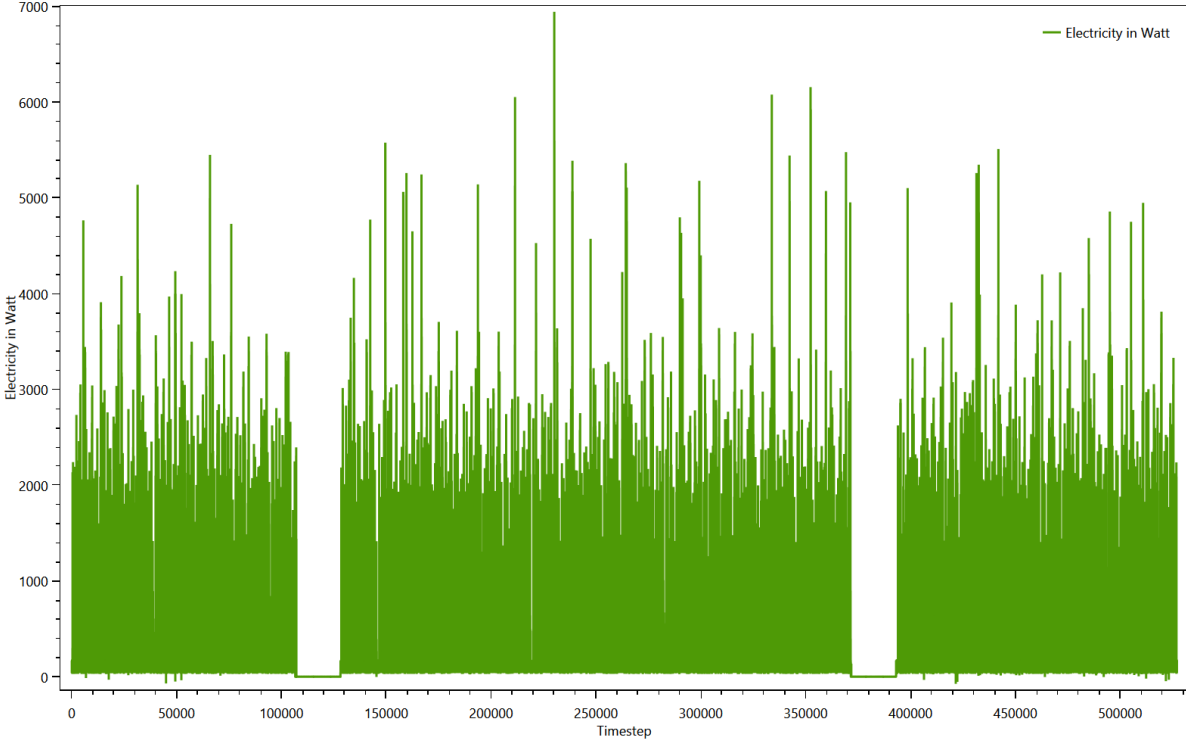
Summed up curve for Cold Water from SumProfiles.Cold Water.png



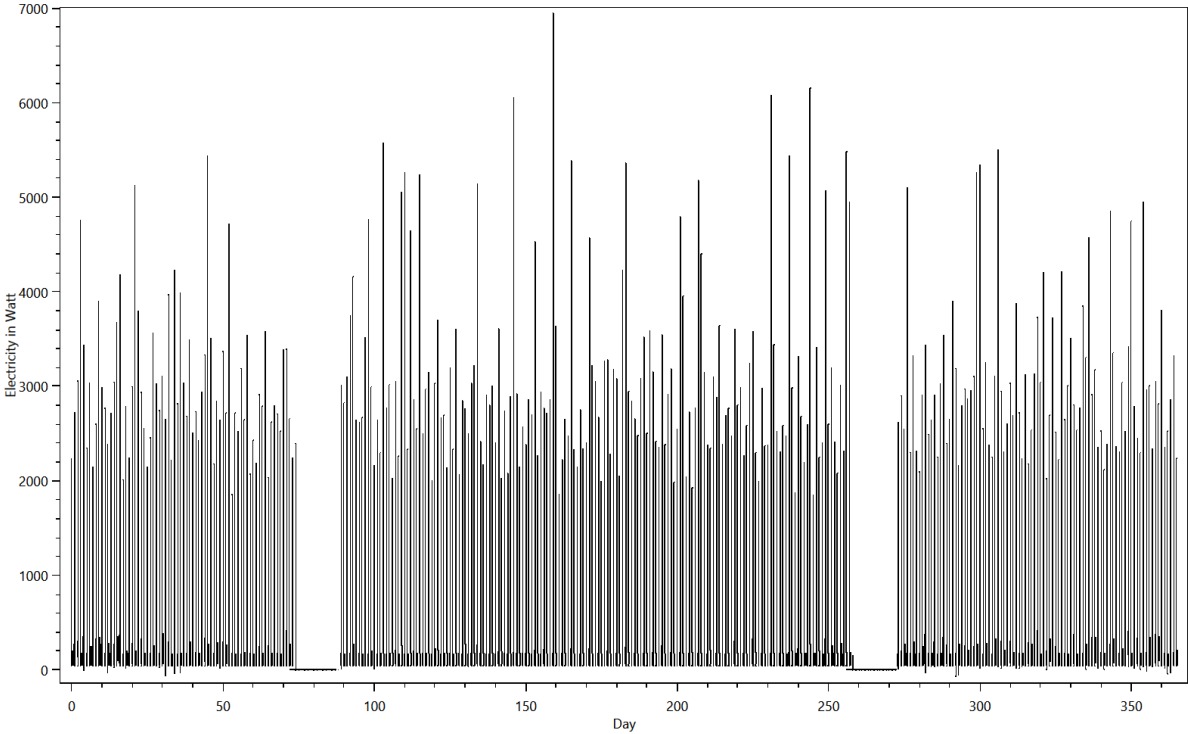
Summed up curve for Cold WaterMinMax from SumProfiles.Cold WaterMinMax.png



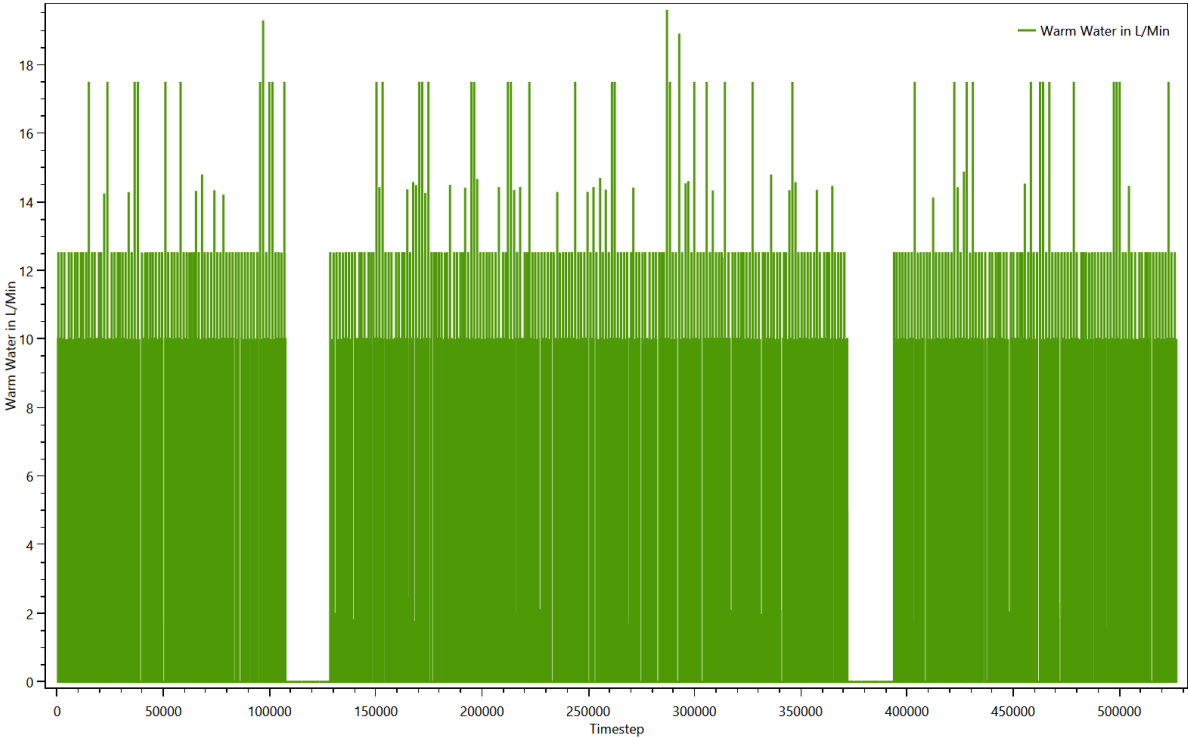
Summed up curve for Electricity from SumProfiles.Electricity.png



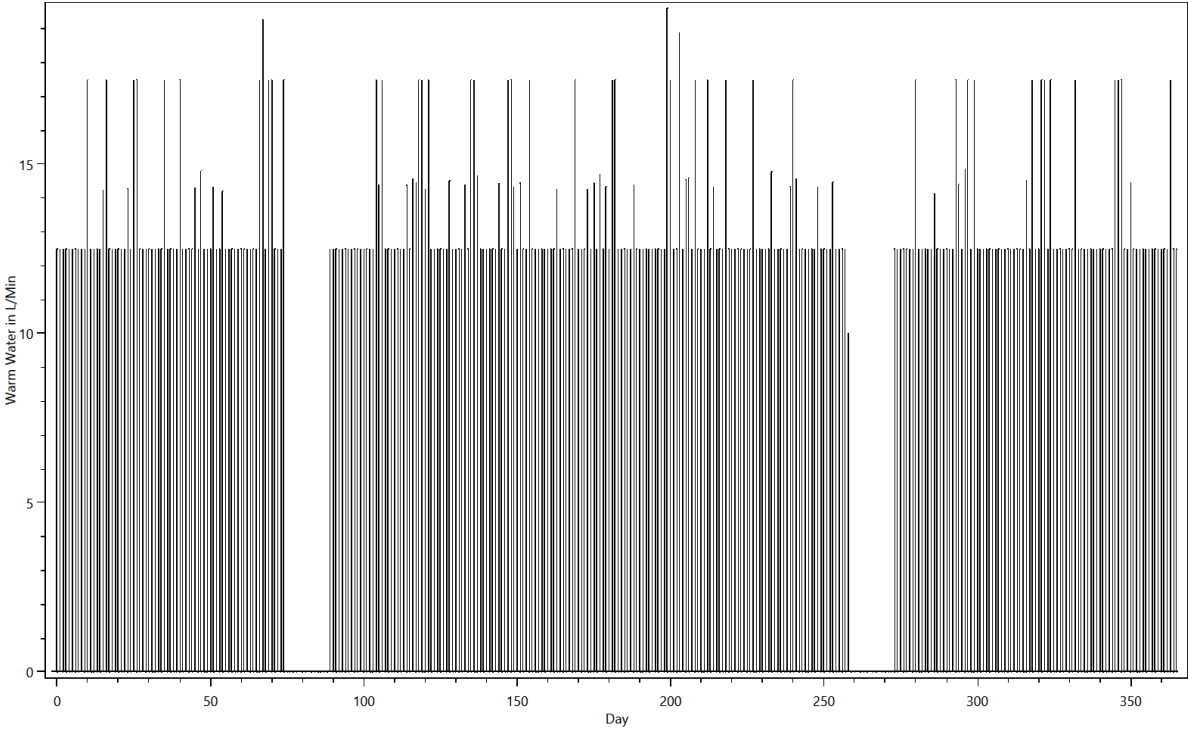
Summed up curve for ElectricityMinMax from SumProfiles.ElectricityMinMax.png



Summed up curve for Warm Water from SumProfiles.Warm Water.png



Summed up curve for Warm WaterMinMax from SumProfiles.Warm WaterMinMax.png



Time Profiles

This is made from the files starting with: Time Profiles

These files show which time profiles were used for each device and how often. The content looks like this:

TimeProfiles.HH0.CHR13 Student with Work 0.txt

Device;Load Type;Profile;Number of Activations

Bathroom Light (100W);Electricity;Bath - light [Synthetic for Light Device];385

Bathroom Mirror Light 100W (Conventional);Electricity;Bath - light [Synthetic for Light Device];385

Bathroom Sink 10L/min;Warm Water;0 h 01 min 100% [Synthetic];869

Bathroom Sink 10L/min;Warm Water;0 h 01 min 50% [Synthetic];652

Bed 8;None;08 h 0 min 100% [Synthetic];335

Bedroom Light (60W);Electricity;Bedroom - light [Synthetic for Light Device];2

CD/DVD Player / Philips DVDR 725 H;Electricity;01 h 30 min 100% [Synthetic];151

CD/DVD Player / Philips DVDR 725 H;Electricity;02 h 0 min 100% [Synthetic];5

CD/DVD Player / Philips DVDR 725 H;Electricity;Standby TV / Receiver 1 h 0 min 3% [Synthetic];8064

Canon CanoScan LIDE 110;Electricity;0 h 10 min 100% [Synthetic];97

Cleanser;None;01 h 0 min 100% [Synthetic];93

Coffee Machine / Braun Impression KF 600;Electricity;0 h 10 min 100% [Synthetic];329

Couch;None;01 h 0 min 100% [Synthetic];144

Couch;None;02 h 0 min 100% [Synthetic];14

Dance Club;None;04 h 0 min 100% [Synthetic];30

Desk;None;01 h 0 min 100% [Synthetic];257

Digitalpiano / Kawai CN-23;Electricity;01 h 0 min 100% [Synthetic];275

Dishwashers / Bosch SGI 58M02 EU;Cold Water;0 h 05 min 100% [Synthetic];51

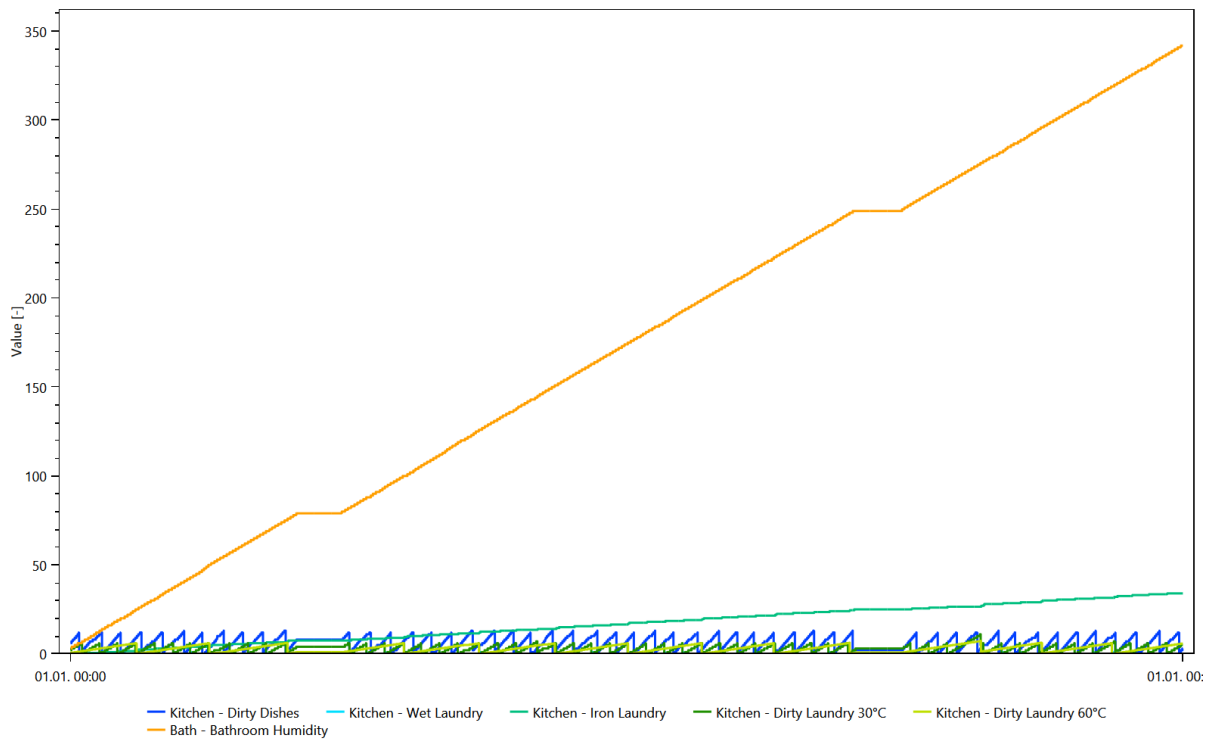
Dishwashers / Bosch SGI 58M02 EU;Electricity;Dishwasher profile [Synthetic];51

Variables

This is made from the files starting with: Variablelogfile

The variables are used to keep track of things like dirty laundry, dirty dishes and the amount of laundry to iron. They are used to ensure that for example the dishwasher is only turned on if there are sufficient dirty dishes. One chart shows the first 25000 timesteps of the contents of all variables, the other shows the entire time span.

Variables



Variables

