

Overview of the results of the household CHR06 Jak Jobless 0

Calculation Time
Freitag, 1. Januar 2016 - Sonntag, 1. Januar 2017

Energy Intensity: EnergySaving

Seed 4440

LoadProfileGenerator 5.8.0.16019

by Noah Pflugradt

<http://www.loadprofilegenerator.de>

Rendering date:16.12.2016 09:05:58

Table of Contents

- Totals..... 3
- Persons..... 5
- Activity Frequency Charts..... 6
- Activity Distribution per Person..... 7
- Time Use per Person per Affordance Per Person..... 8
- Energy use per person per affordance..... 10
- Time Use per Person Per Affordance according to different category definitions..... 12
- Overview of the actions of each member of the household..... 14
- Overview of the time of the use per load type per device..... 15
- Energy/Resource use distribution per load type per affordance..... 17
- Energy use for each load type for each device..... 22
- Duration curve for each device for each load type..... 26
- Duration curve for each load type..... 28
- Grouped energy use for each load type for each device..... 30
- Example of the device profiles for each load type..... 34
- Overview of the time and power of the use per load type per device..... 48
- Energy use per load type during different seasons, split by weekday/saturday/sunday..... 50
- Location Distribution per Person..... 52
- Actions.csv..... 53
- Sum Profiles..... 54
- Time Profiles..... 58
- Variables..... 59

Totals

Totals for each Loadtype

Load Type	Value	Unit
Cold Water	29765.70	L
Electricity	1265.04	kWh
Warm Water	36452.50	L

Totals for each Loadtype per Day

Load Type	Value	Unit
Cold Water	81.33	L
Electricity	3.46	kWh
Warm Water	99.60	L

Minimum and Maximum for each Loadtype

Household	Minimum	Maximum	Unit
Cold Water	0.00	15.94	L/Min
Electricity	0.00	9840.14	Watt
Warm Water	0.00	17.50	L/Min

Totals for each Loadtype per Person

Load Type	Value	Unit
Cold Water	29765.70	L
Electricity	1265.04	kWh

Warm Water	36452.50	L
------------	----------	---

Totals for each Loadtype per Person per Day

Load Type	Value	Unit
Cold Water	81.33	L
Electricity	3.46	kWh
Warm Water	99.60	L

Persons

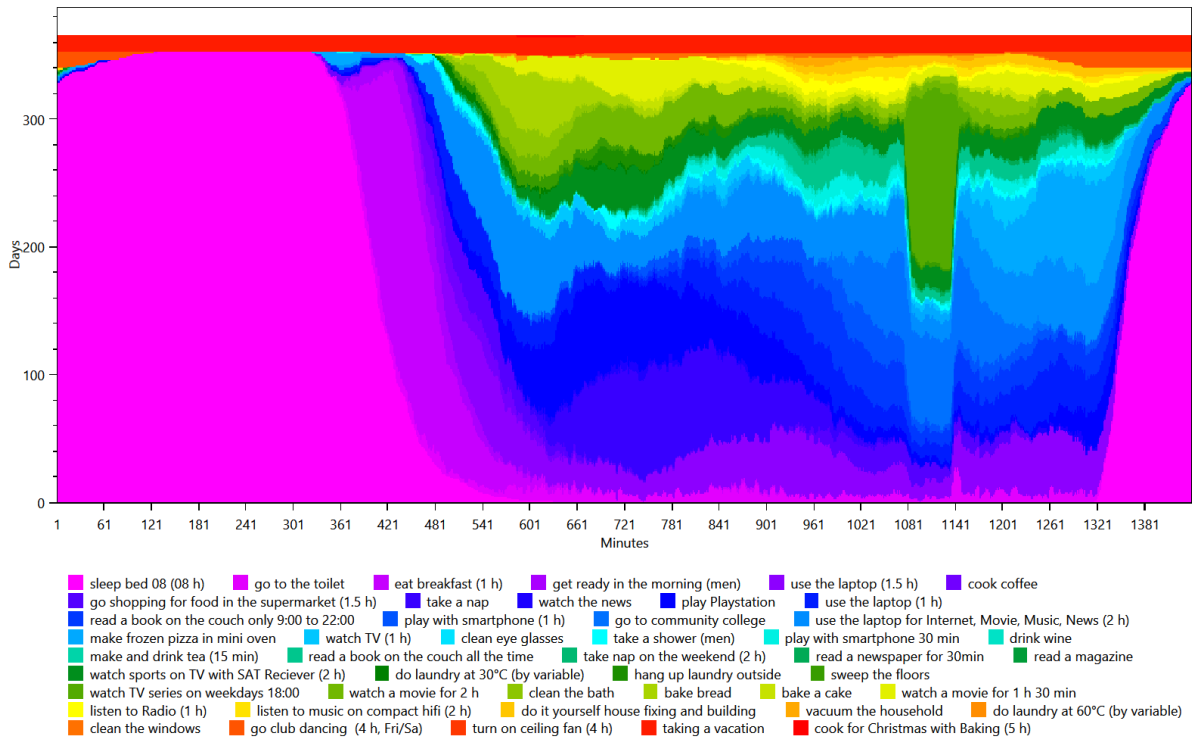
- HHO
 - CHR06 Jak Jobless (30/Male)(30/Male)

Activity Frequency Charts

This is made from the files starting with: ActivityFrequenciesPerMinute

These charts show an ordered distribution of times of the activities of each person. This helps with judging quickly if a person is sleeping correctly and if they are going to work regularly.

HH0 - CHR06 Jak Jobless (30 Male)

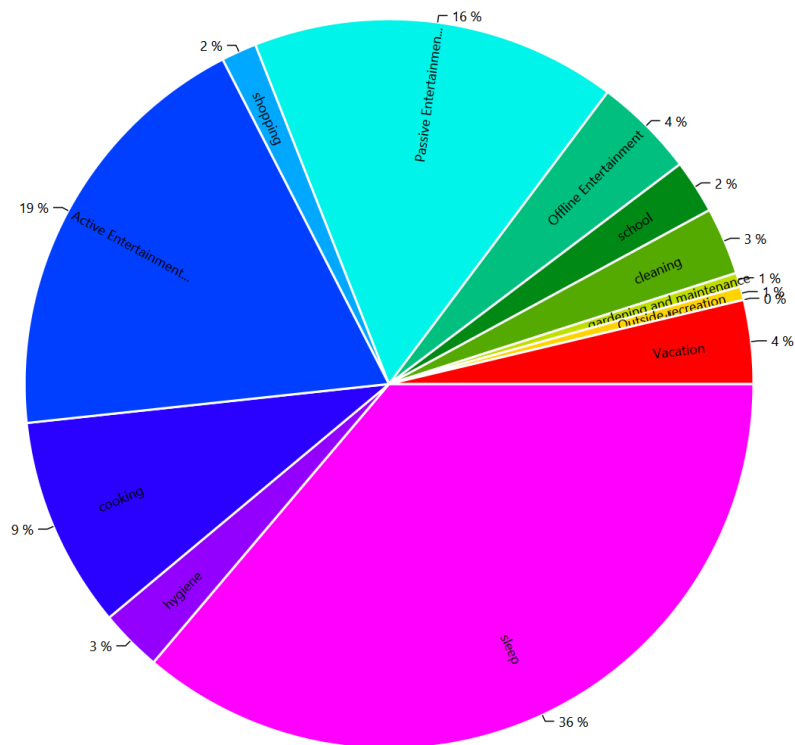


Activity Distribution per Person

This is made from the files starting with: ActivityPercentage

This shows the distribution of the activities, grouped by the affordance AffordanceToCategories.

HH0 - CHR06 Jak Jobless (30 Male)

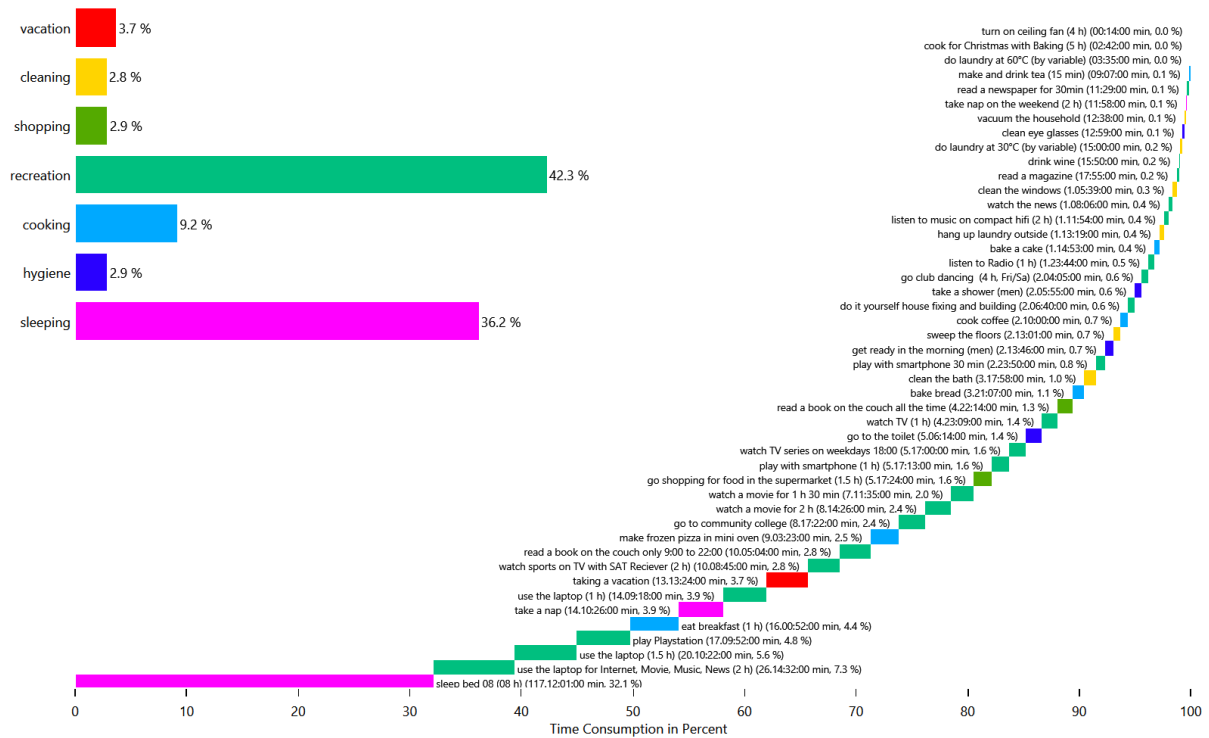


Time Use per Person per Affordance Per Person

This is made from the files starting with: AffordanceTimeUse

These charts show how the people in the household use their time. This shows the individual affordances to help find problems in the household definition.

HH0 - CHR06 Jak Jobless (30 Male)

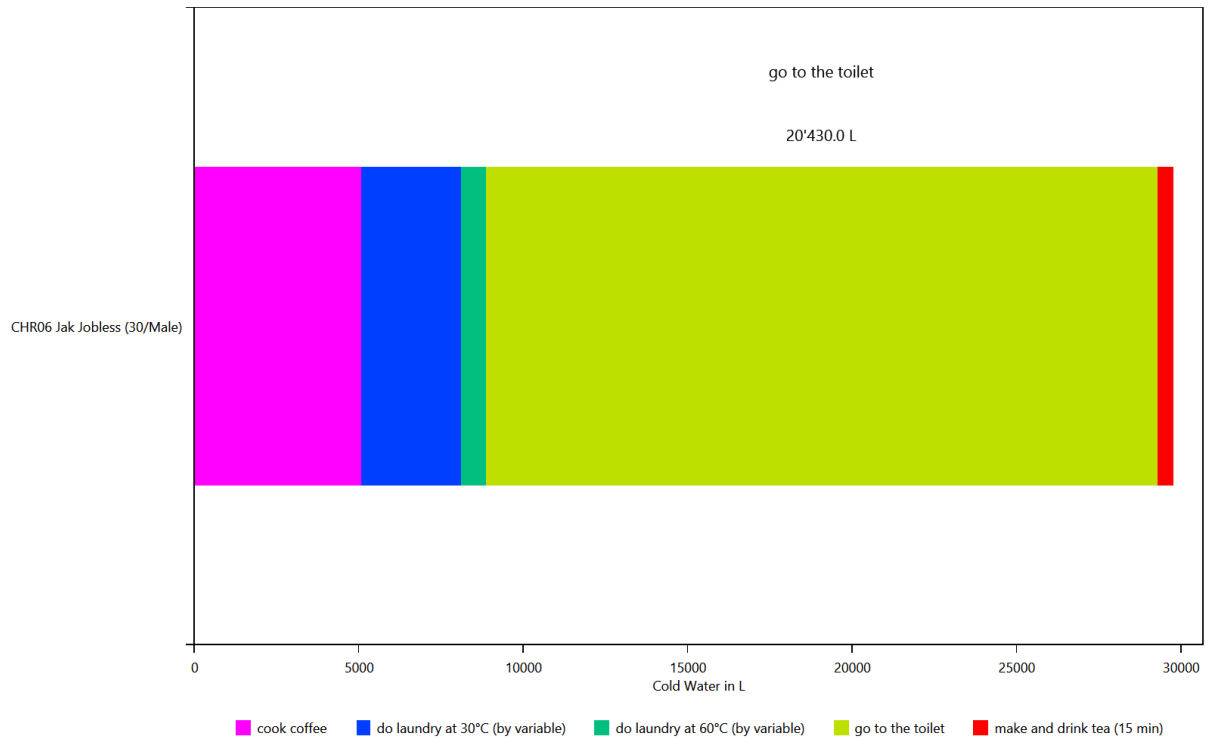


Energy use per person per affordance

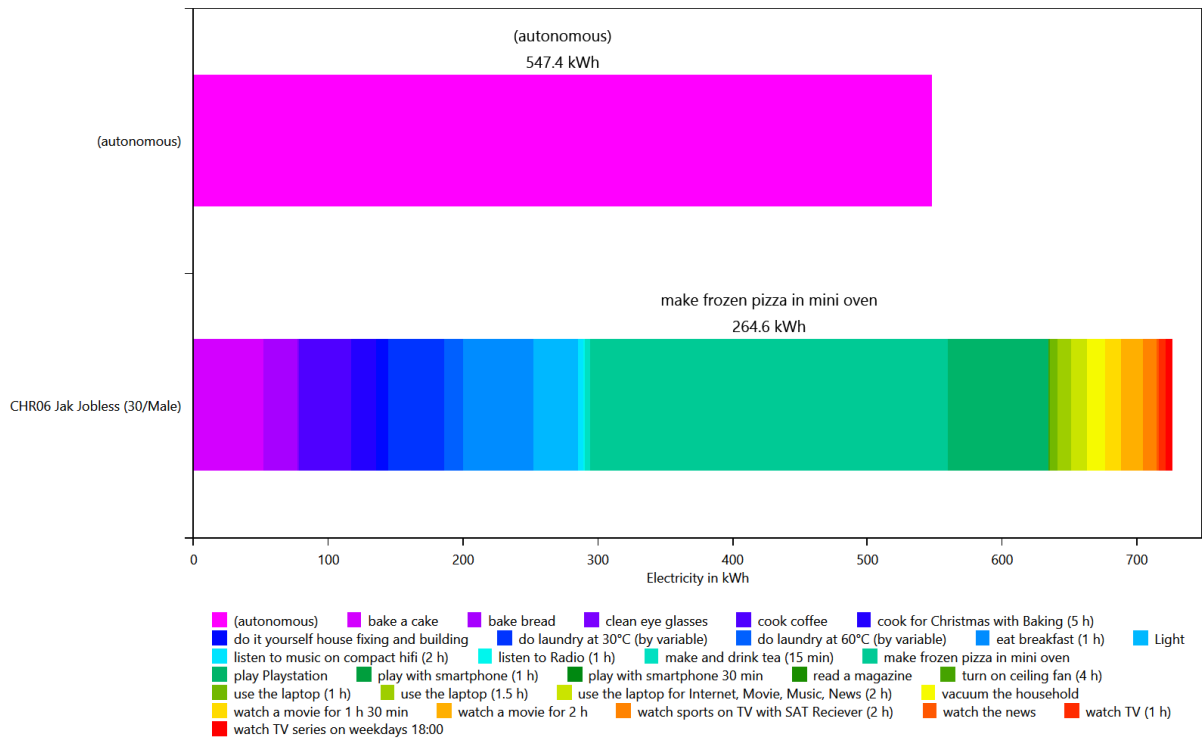
This is made from the files starting with: **AffordanceEnergyUsePerPerson**

This shows the distribution of the energy/ressource use to each affordance by load type and by person. This helps with figuring out if a person is using too much electricity.

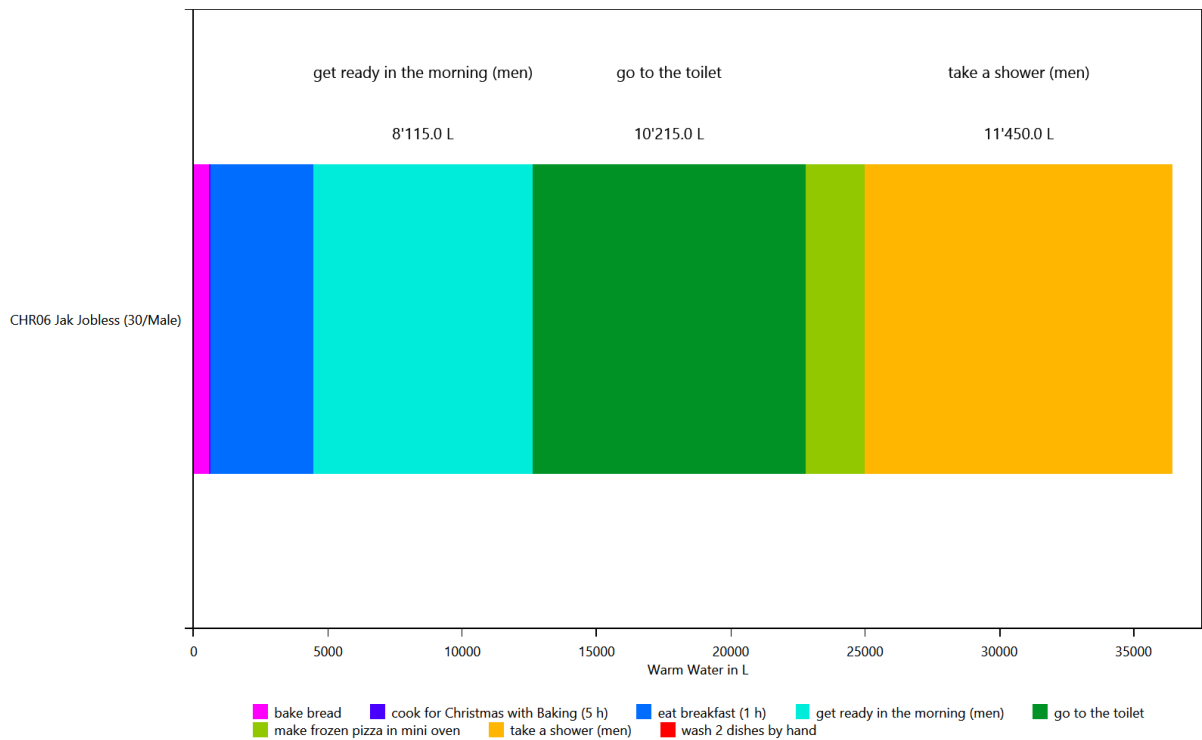
HH0 - Cold Water



HH0 - Electricity



HH0 - Warm Water

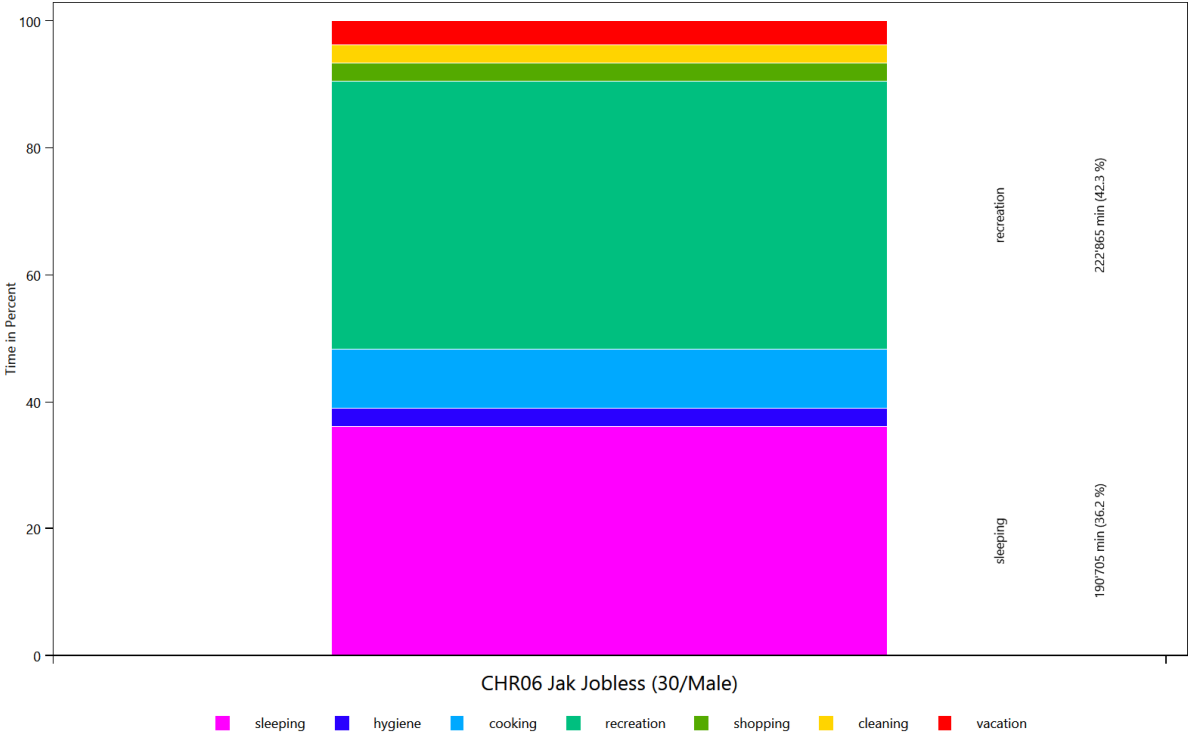


Time Use per Person Per Affordance according to different category definitions

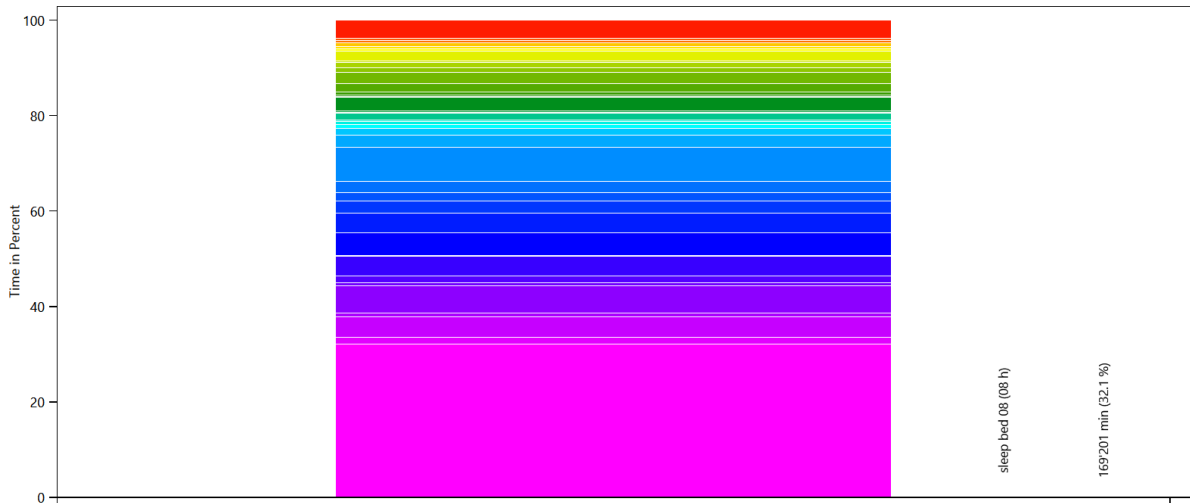
This is made from the files starting with: AffordanceTaggingSet

These charts show how the people in the household use their time. To help with analysis, the activities can be grouped by various criteria. This is done with the affordance tagging sets in the LPG.

Basic Tagging - HH0

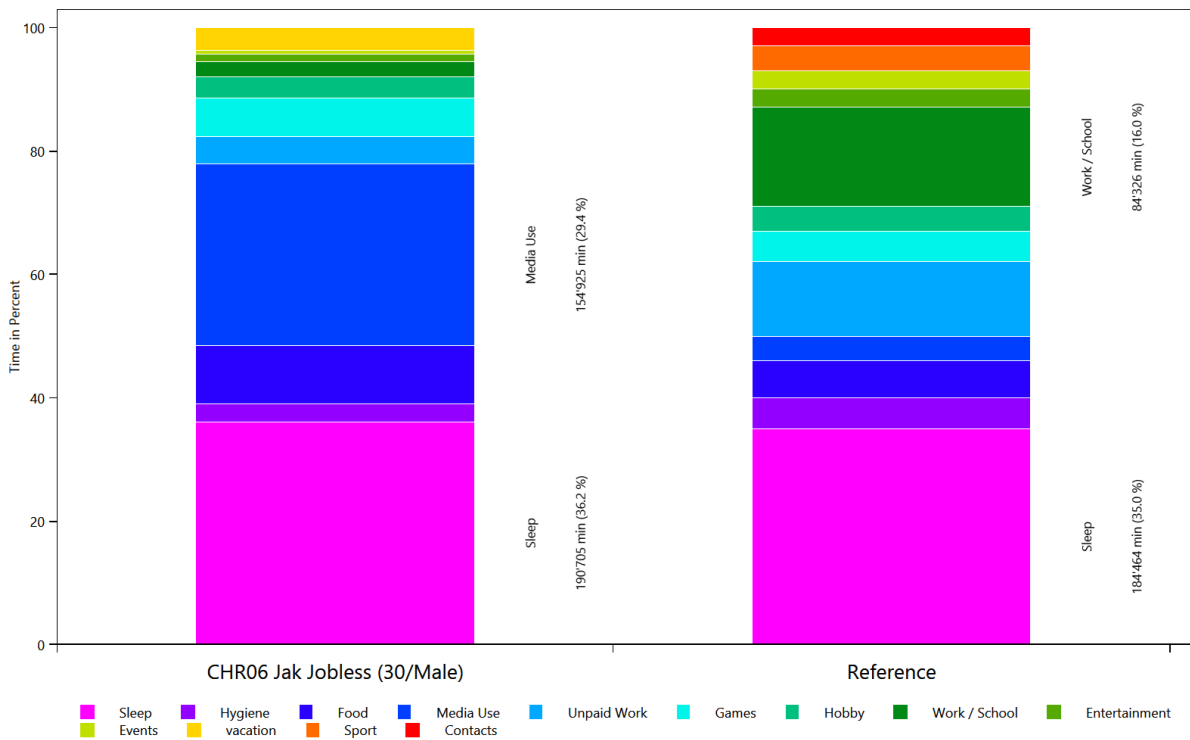


Tagging Set For Planning - HH0



- sleep bed 08 (08 h)
- go to the toilet
- eat breakfast (1 h)
- get ready in the morning (men)
- use the laptop (1.5 h)
- cook coffee
- go shopping for food in the supermarket (1.5 h)
- take a nap
- watch the news
- play Playstation
- use the laptop (1 h)
- read a book on the couch only 9:00 to 22:00
- play with smartphone (1 h)
- go to community college
- use the laptop for Internet, Movie, Music, News (2 h)
- make frozen pizza in mini oven
- watch TV (1 h)
- clean eye glasses
- take a shower (men)
- play with smartphone 30 min
- drink wine
- make and drink tea (15 min)
- read a book on the couch all the time
- take nap on the weekend (2 h)
- read a newspaper for 30min
- read a magazine
- watch sports on TV with SAT Receiver (2 h)
- do laundry at 30°C (by variable)
- hang up laundry outside
- sweep the floors
- watch TV series on weekdays 18:00
- watch a movie for 2 h
- clean the bath
- bake bread
- bake a cake
- watch a movie for 1 h 30 min
- listen to Radio (1 h)
- listen to music on compact hifi (2 h)
- do it yourself house fixing and building
- vacuum the household
- do laundry at 60°C (by variable)
- clean the windows
- go club dancing (4 h, Fri/Sa)
- turn on ceiling fan (4 h)
- vacation
- cook for Christmas with Baking (5 h)

Wo bleibt die Zeit - HH0

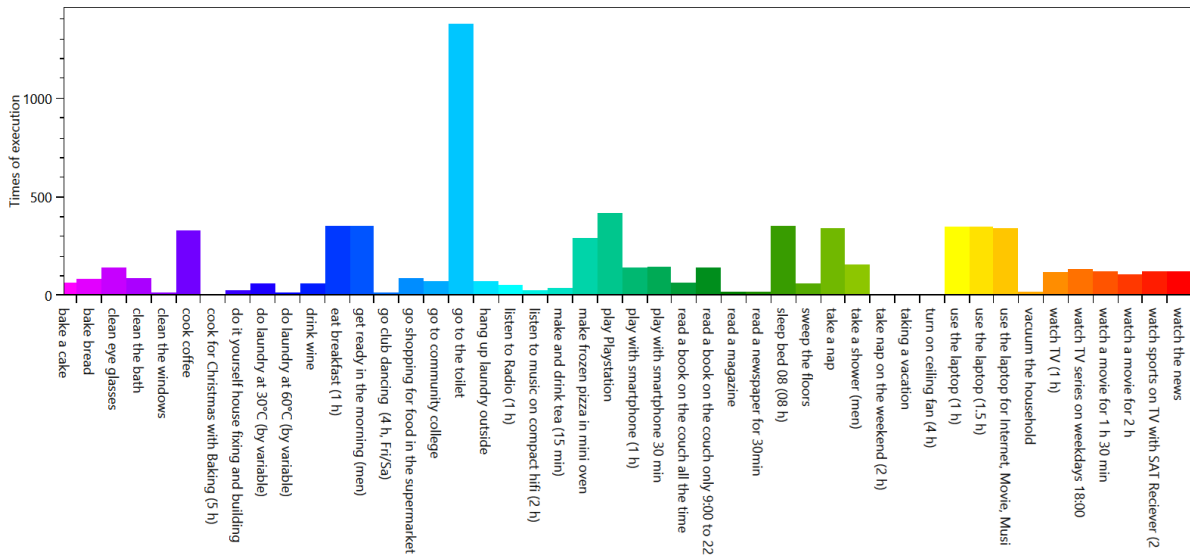


Overview of the actions of each member of the household

This is made from the files starting with: ExecutedActionsOverviewCount

These charts show how often each affordance was executed.

HH0 - CHR06 Jak Jobless (30 Male)

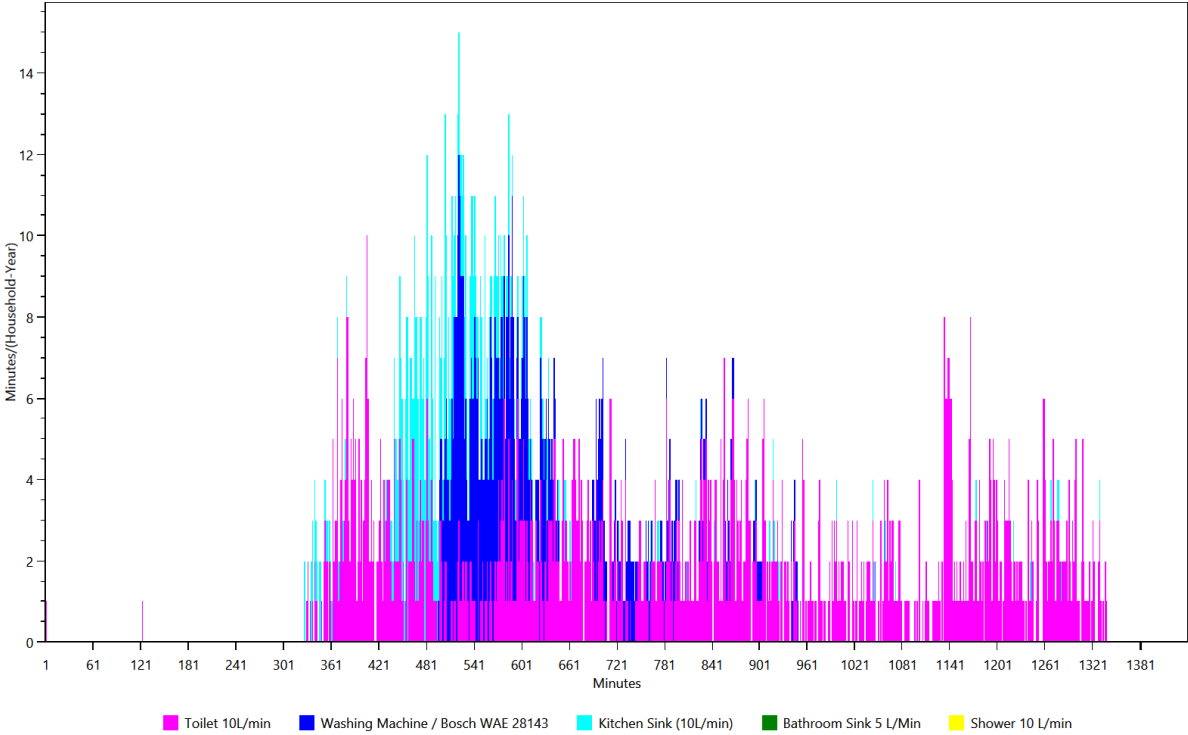


Overview of the time of the use per load type per device

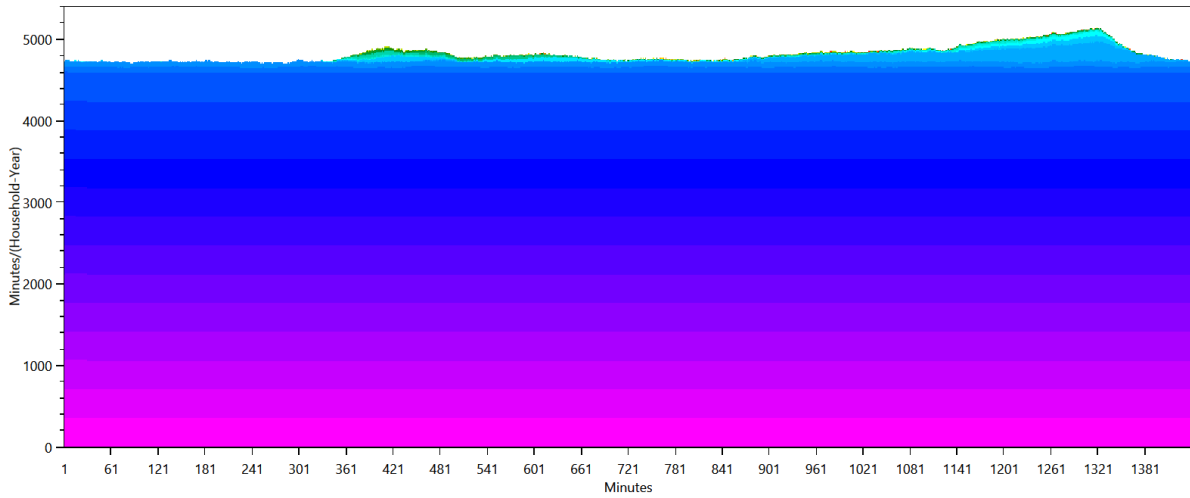
This is made from the files starting with: TimeOfUseEnergyProfiles

The time of use energy profiles shows when each device was used.

Cold Water

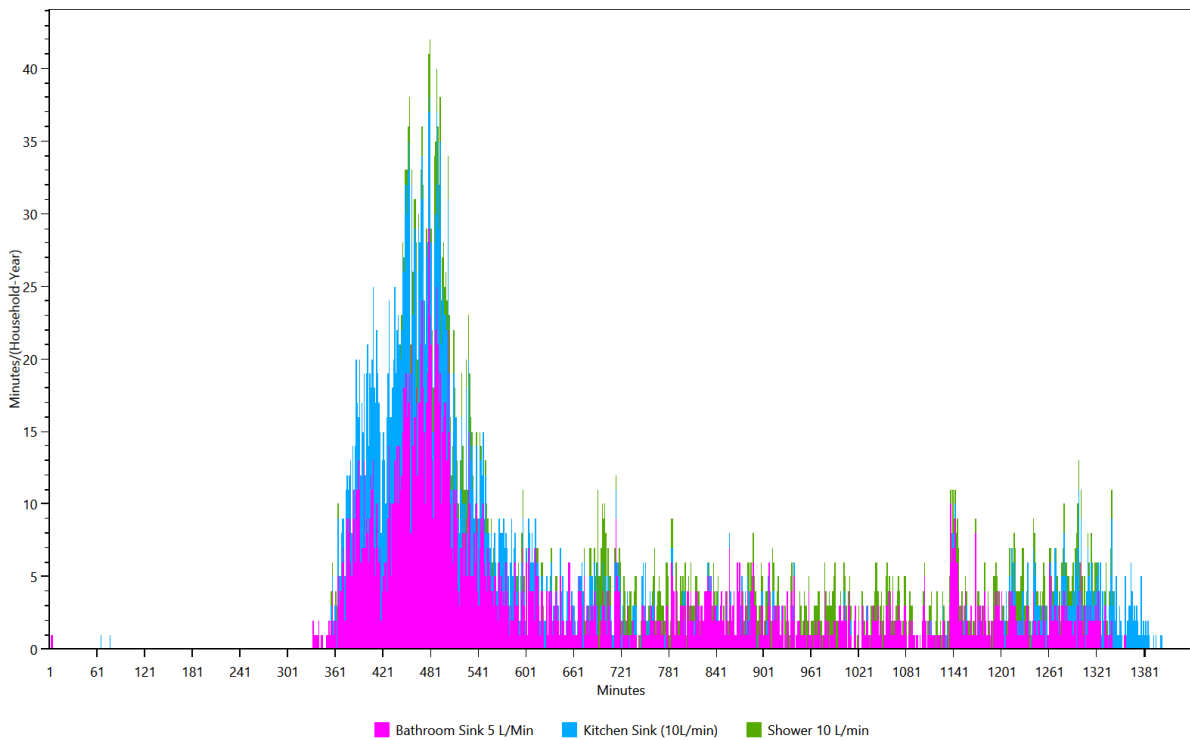


Electricity



- Cell Phone Samsung Charging
- TV Medion MD20123_DE_A
- Microwave / Panasonic NN 5259
- Sony PlayStation 3
- Electric Razor Braun Cruzer 5
- Router O2 Box 6431
- Laptop Sony Vaio SVE151G11M
- Kitchen radio / AEG KRC 4323 CD
- Terratec Noxon iRadio 360
- SAT Receiver / Kathrein UFS913
- Electric Toothbrush Dondodont Professional Clean
- CD/DVD Player / Philips DVDR 725 H
- Hifi System / Sharp XL-HF300PH
- LG GC W 141 BXG
- Siemens KI 20 LA 65 (A+)
- Living Room Light (Energy Saving Lamp, 20W)
- Kitchen Light (20W)
- Washing Machine / Bosch WAE 28143
- Mini-Baking oven / Steba G75/73
- Bathroom Mirror Light 10 W (LED)
- Bathroom Light (20W)
- Juicer / Moulinex Vitafruit
- AFK BM-2N
- Clatronic MS 3249 Milk Foamer
- Bedroom Light (20W)
- Egg Cooker / Russell Hobbs 14048-56 Stylo
- Cellar Light (20W)
- Miele DG 1450
- Toaster Salco MT 400
- Energy Saving Lamp / EL-REF 11 E27
- Nespresso Coffee Machine, Single Cup
- Eye Glass Cleaner Grundig UC 5020
- Westinghouse Fanaway
- Canister vacuum cleaner / Siemens VS 06 G 1831
- Food Slicer / DOMO Schneidemaschine DOS215
- Handmixer / Phillips Robust HR 1581
- AEG PN 2200 RX 4935365097
- Single Stove Plate
- Electric Kettle / Petra WK288 1.5L
- Kitchen Stove / Bauknecht Heko 750 PT Kitchen stove left hind - full power
- Kitchen Stove / Bauknecht Heko 750 PT Kitchen-stove right hind
- Kitchen Stove / Bauknecht Heko 750 PT Kitchen stove front right- full power
- Polishing Machine / Flex L 602 VR
- Skil 4270
- Hand-held Circular Saw / Bosch PKS 46

Warm Water

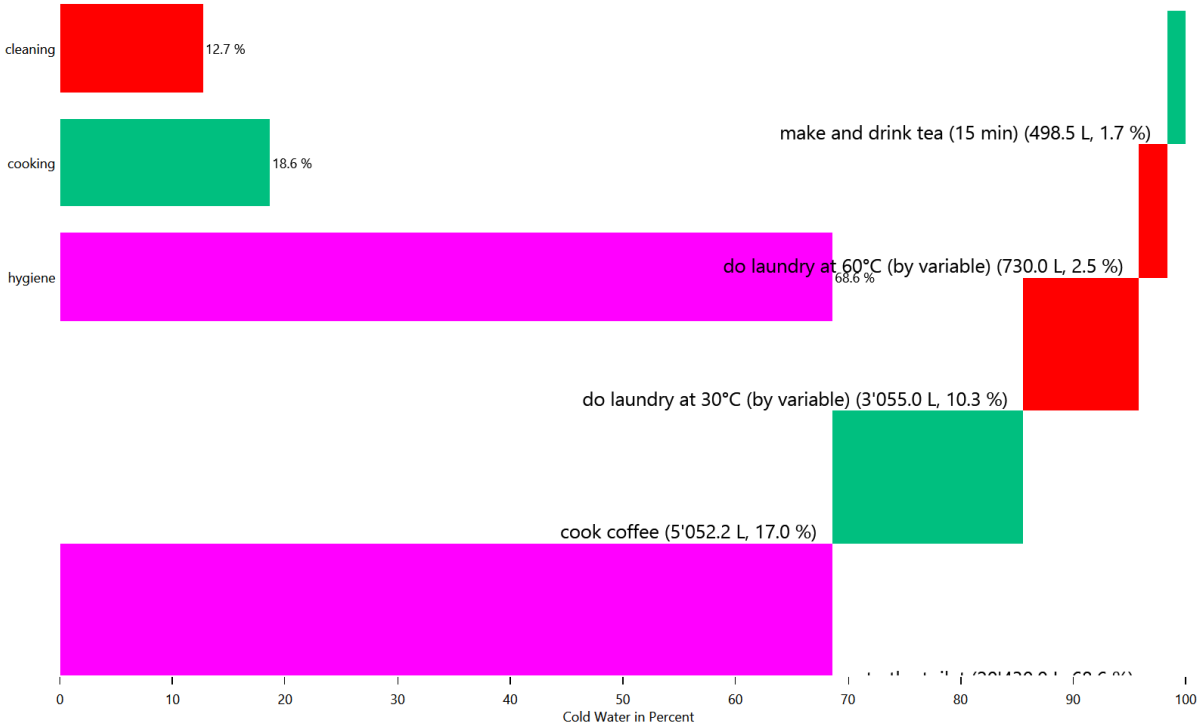


Energy/Resource use distribution per load type per affordance

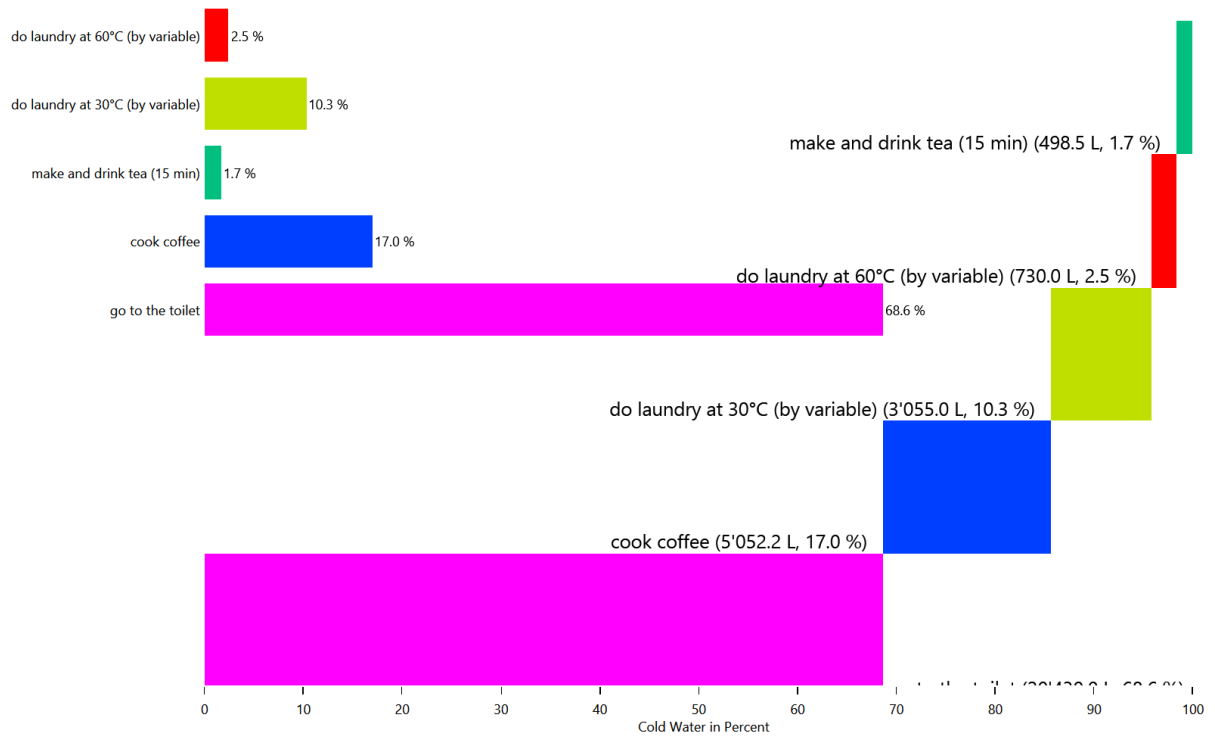
This is made from the files starting with: AffordanceEnergyUse

This shows the distribution of the energy/ressource use to each affordance by load type.

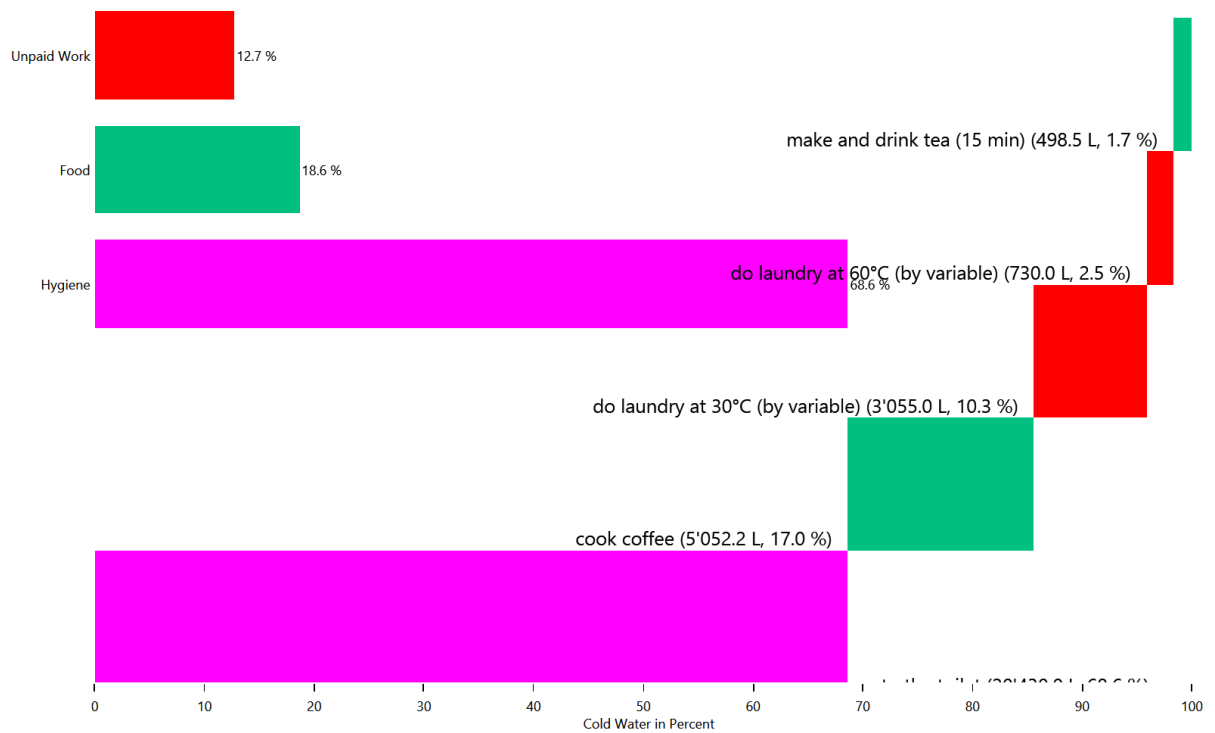
HH0 - Cold Water



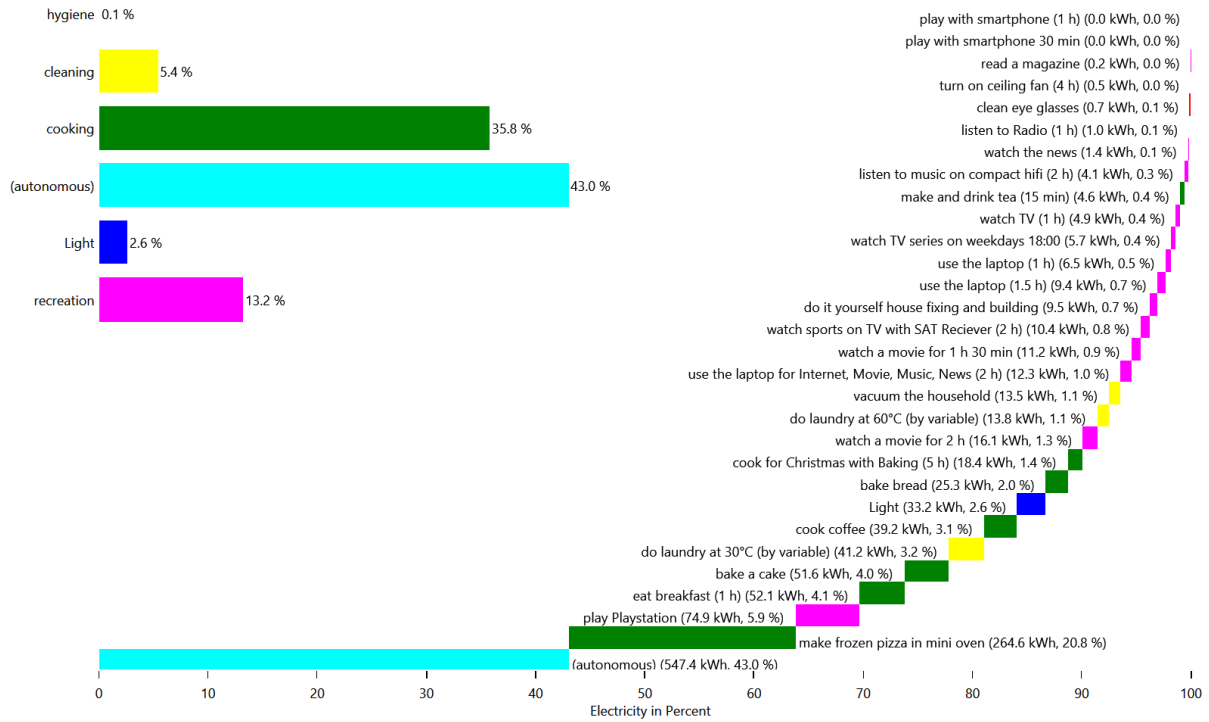
HH0 - Cold Water



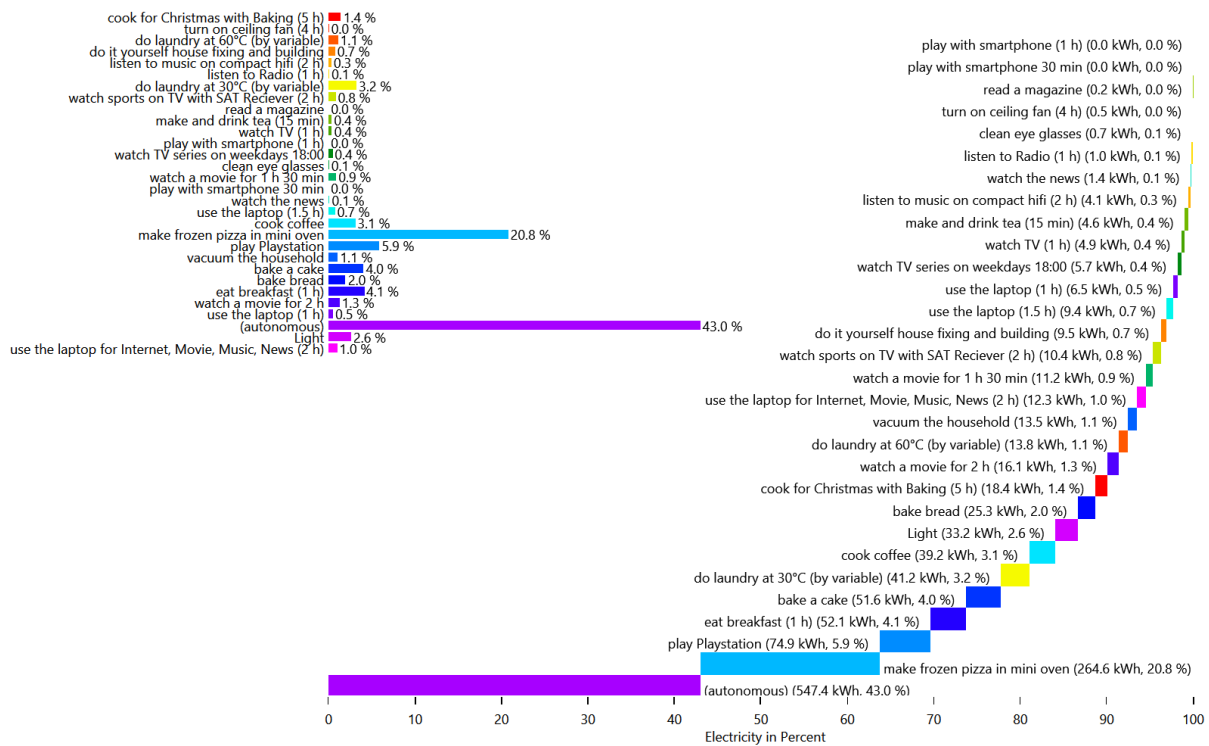
HH0 - Cold Water



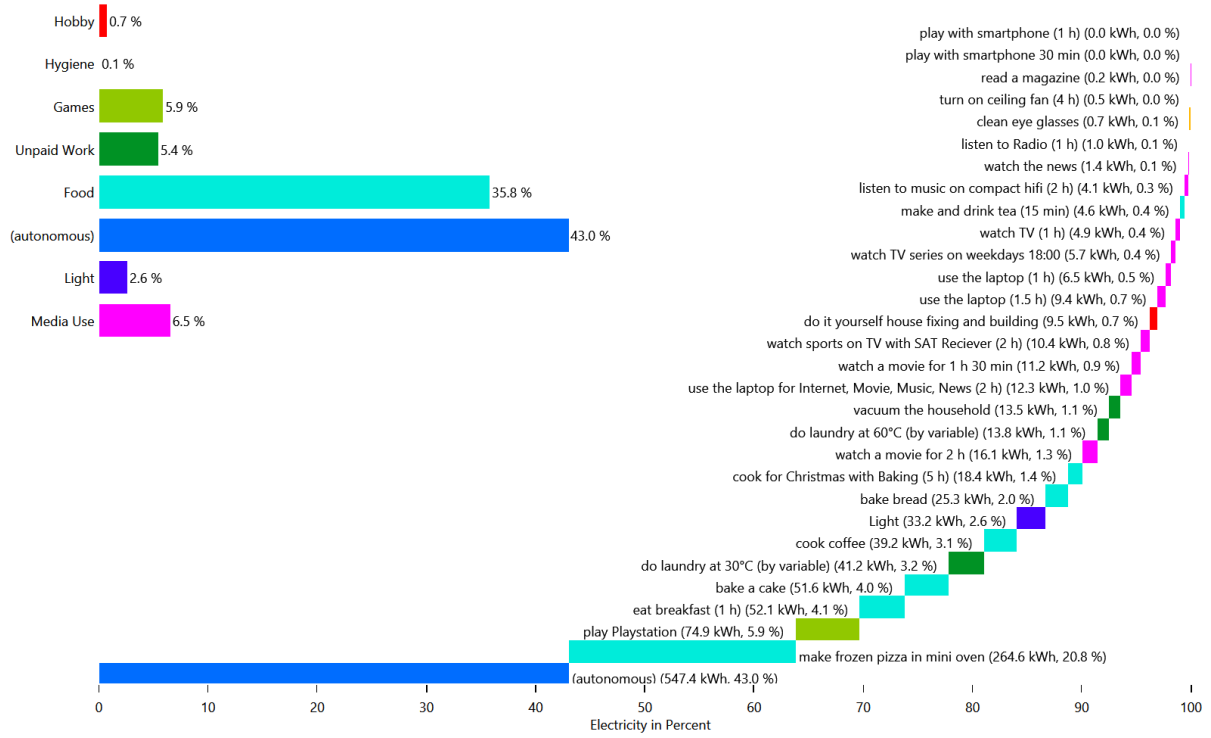
HH0 - Electricity



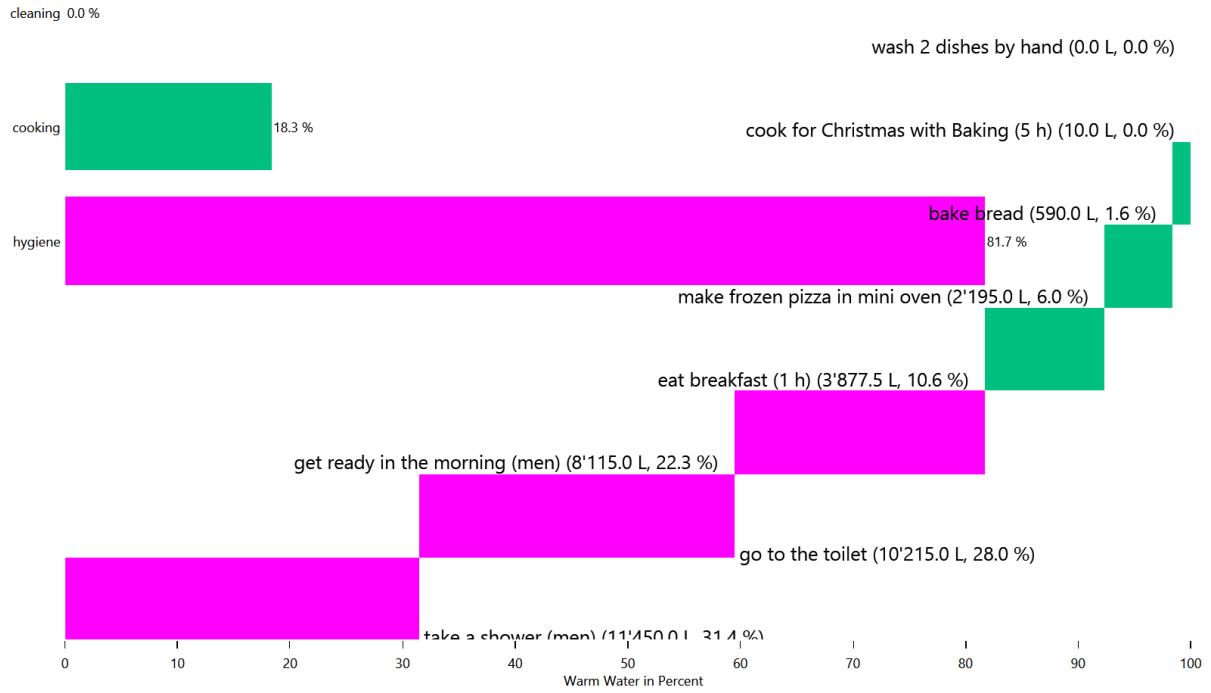
HH0 - Electricity



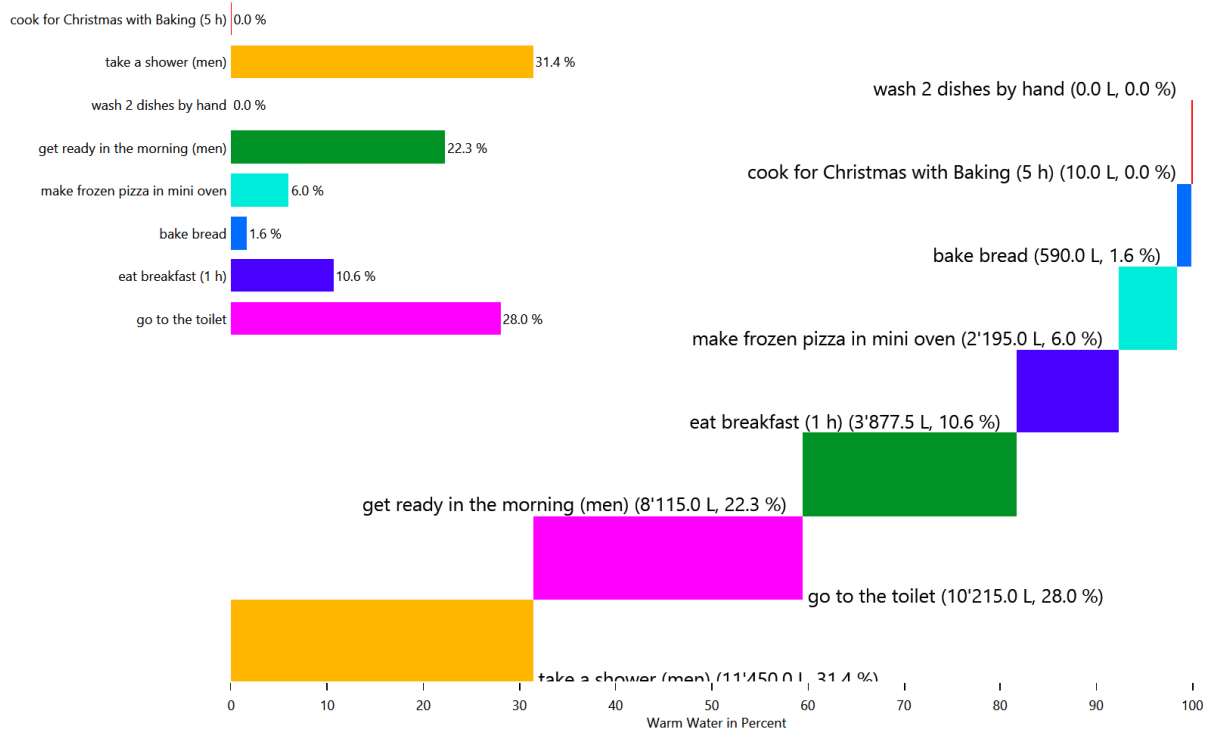
HH0 - Electricity



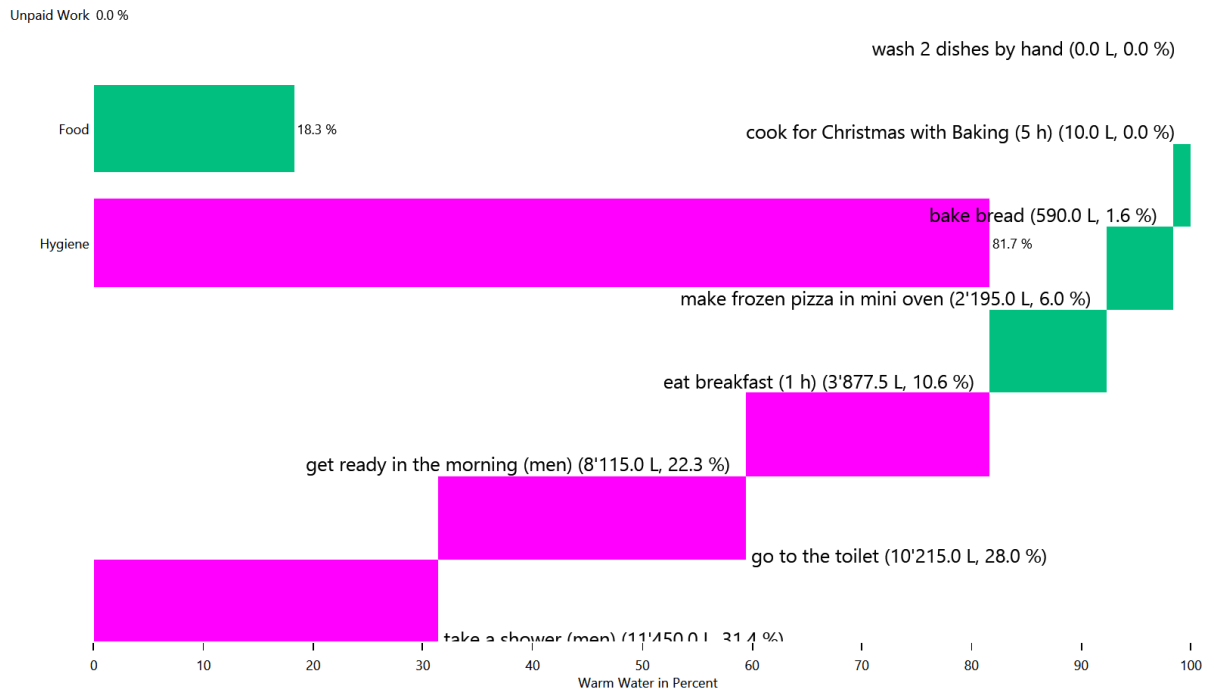
HH0 - Warm Water



HH0 - Warm Water



HH0 - Warm Water

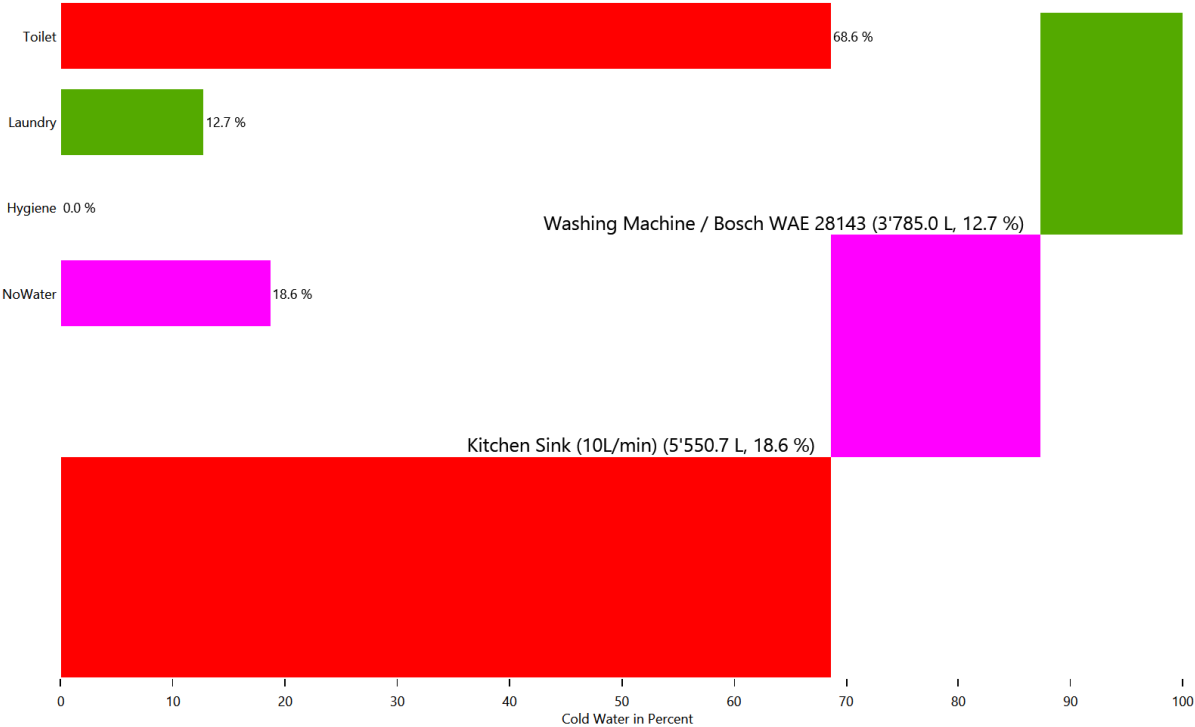


Energy use for each load type for each device

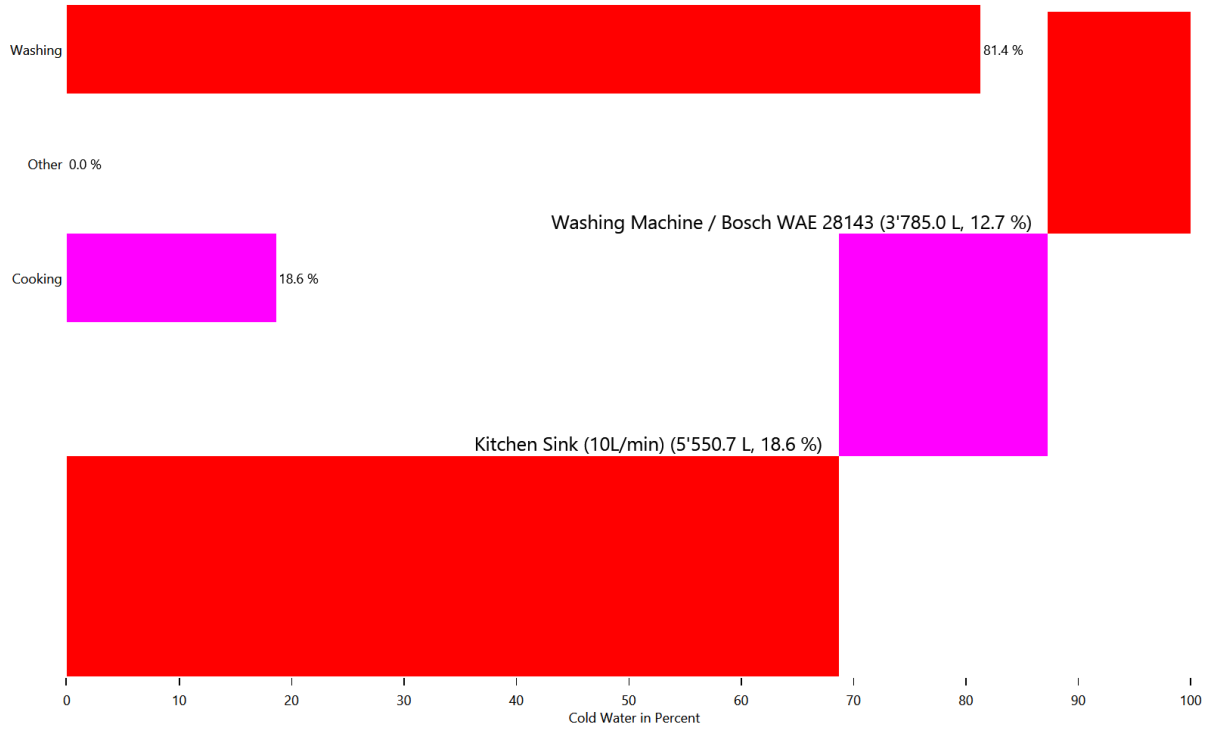
This is made from the files starting with: DeviceSums

These pie charts show the energy use for each individual device in each load type.

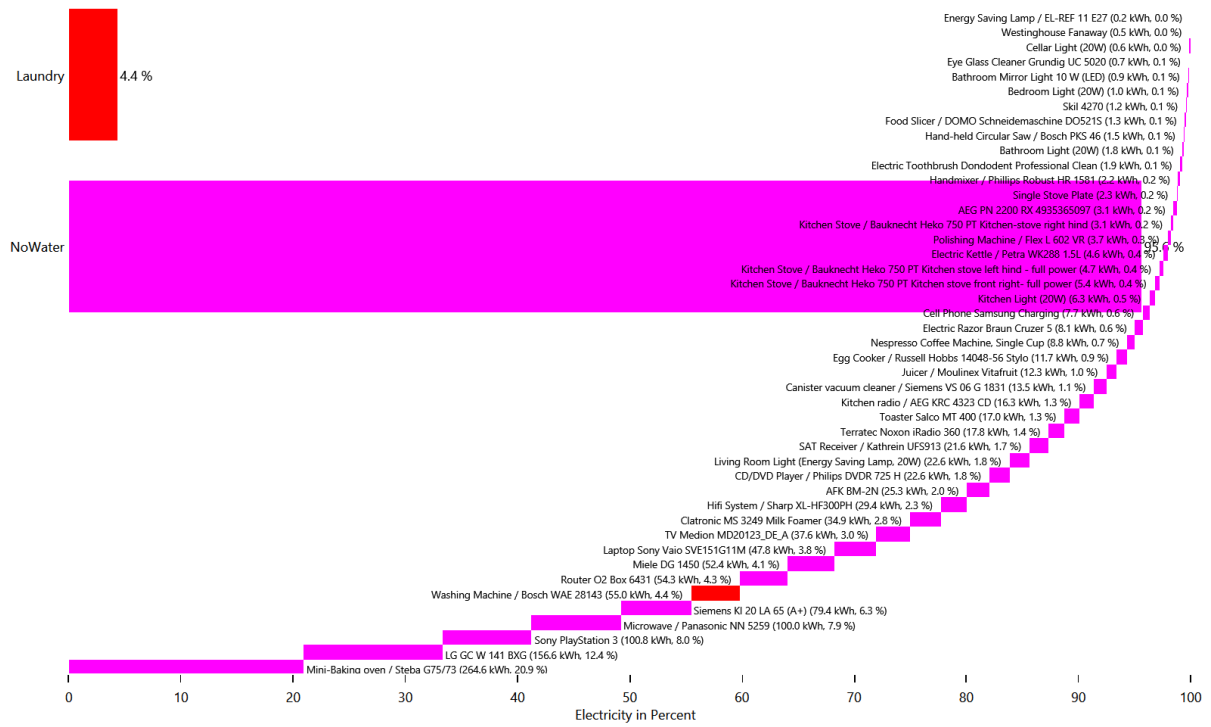
Cold Water



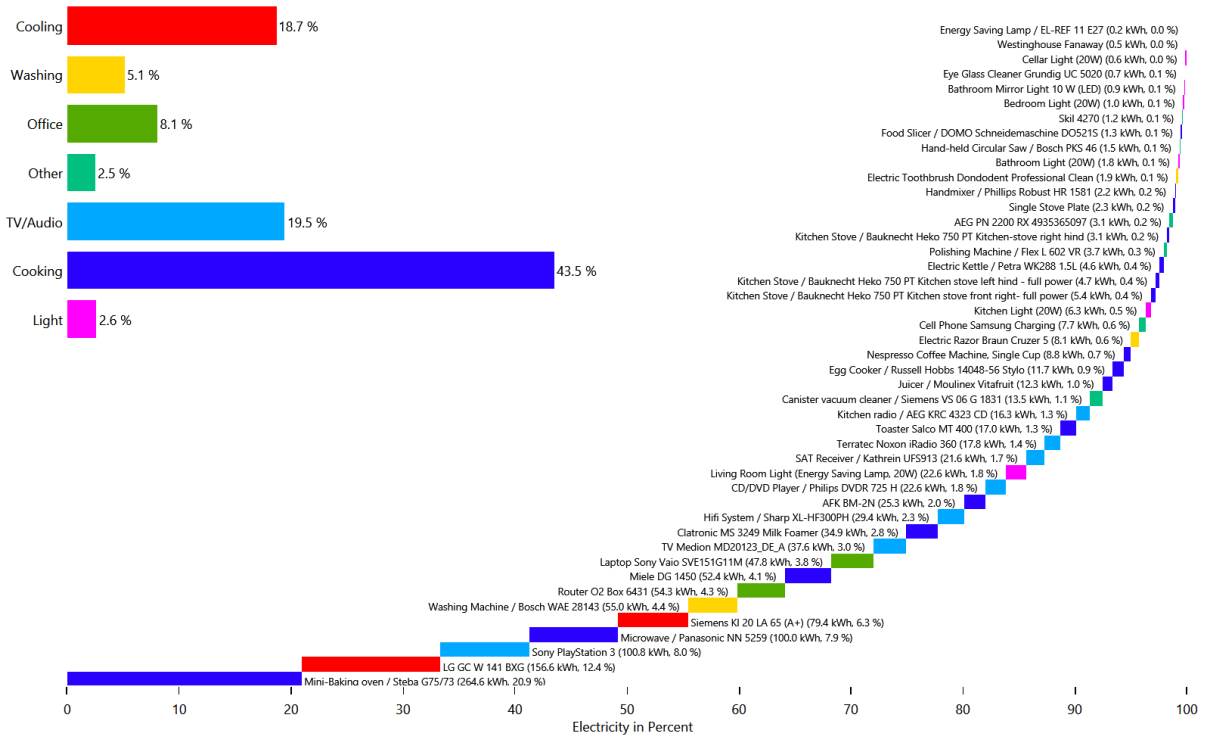
Cold Water



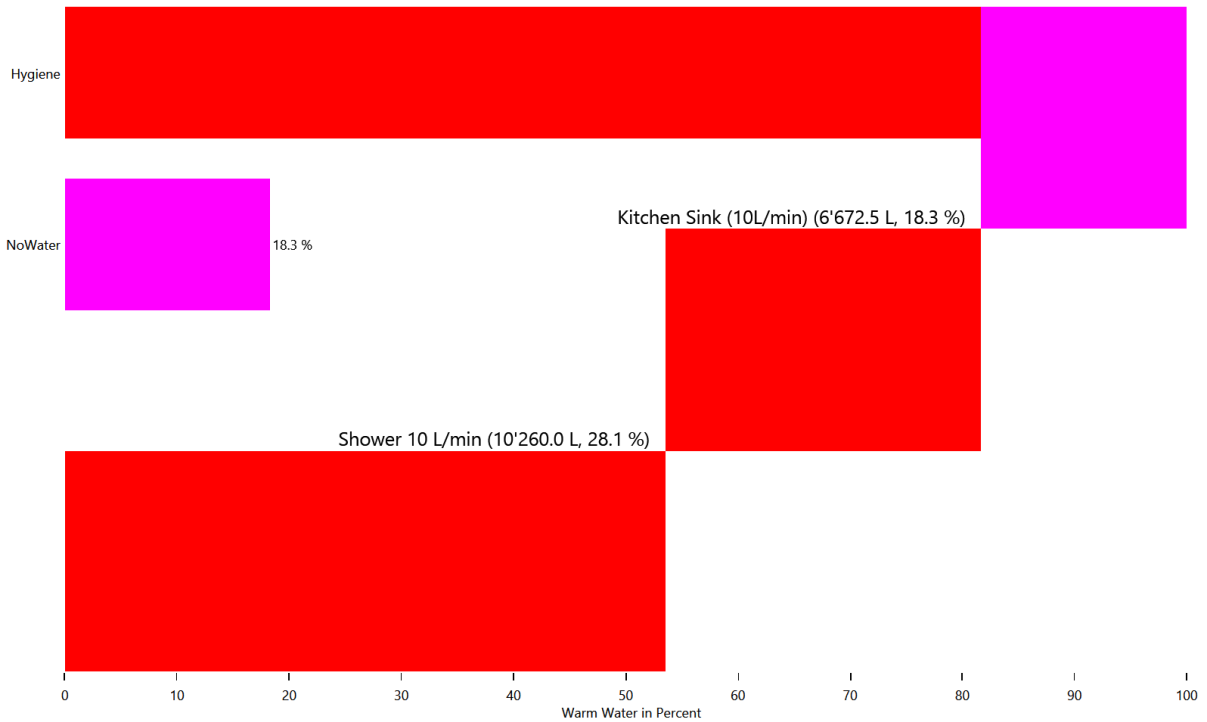
Electricity



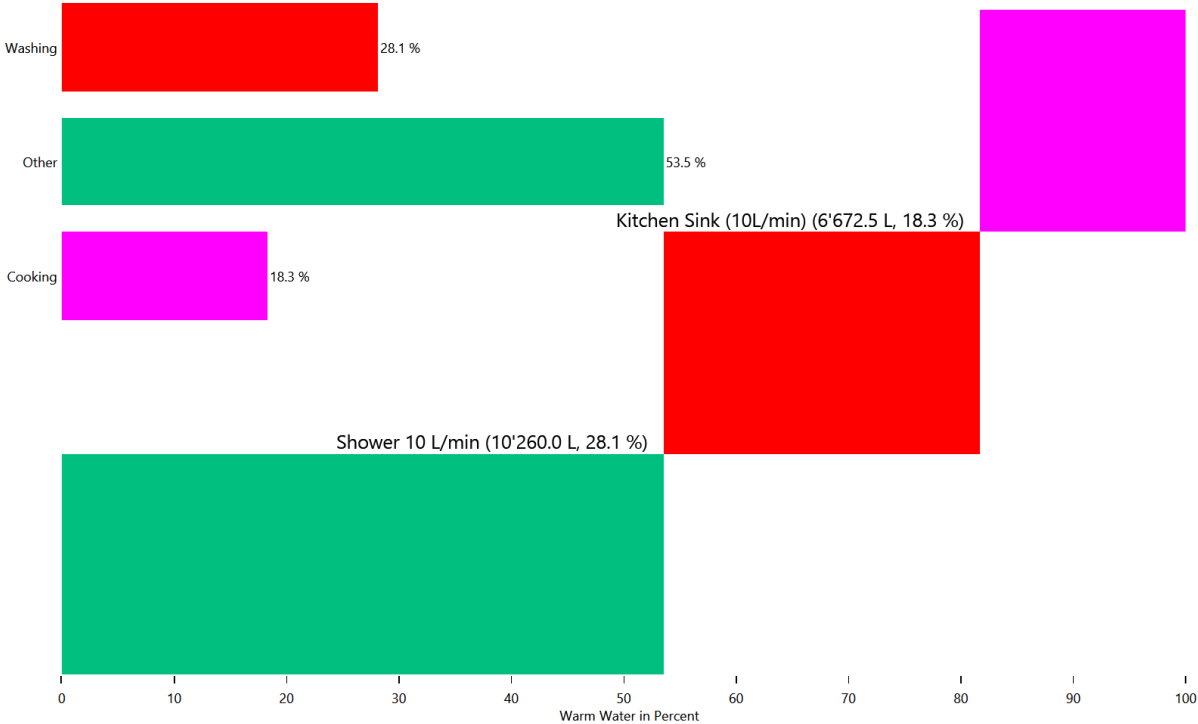
Electricity



Warm Water



Warm Water

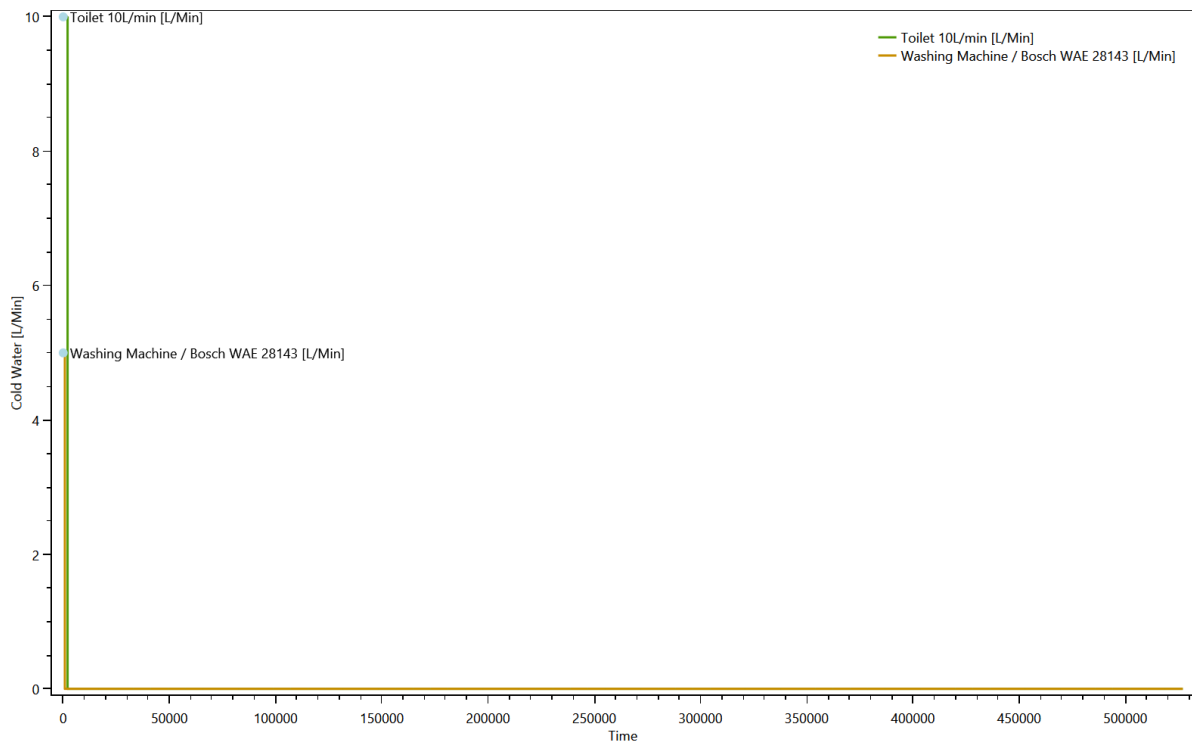


Duration curve for each device for each load type

This is made from the files starting with: DeviceDurationCurves

The device duration curve show the duration curve of each device to give an overview of the power consumption.

Cold Water

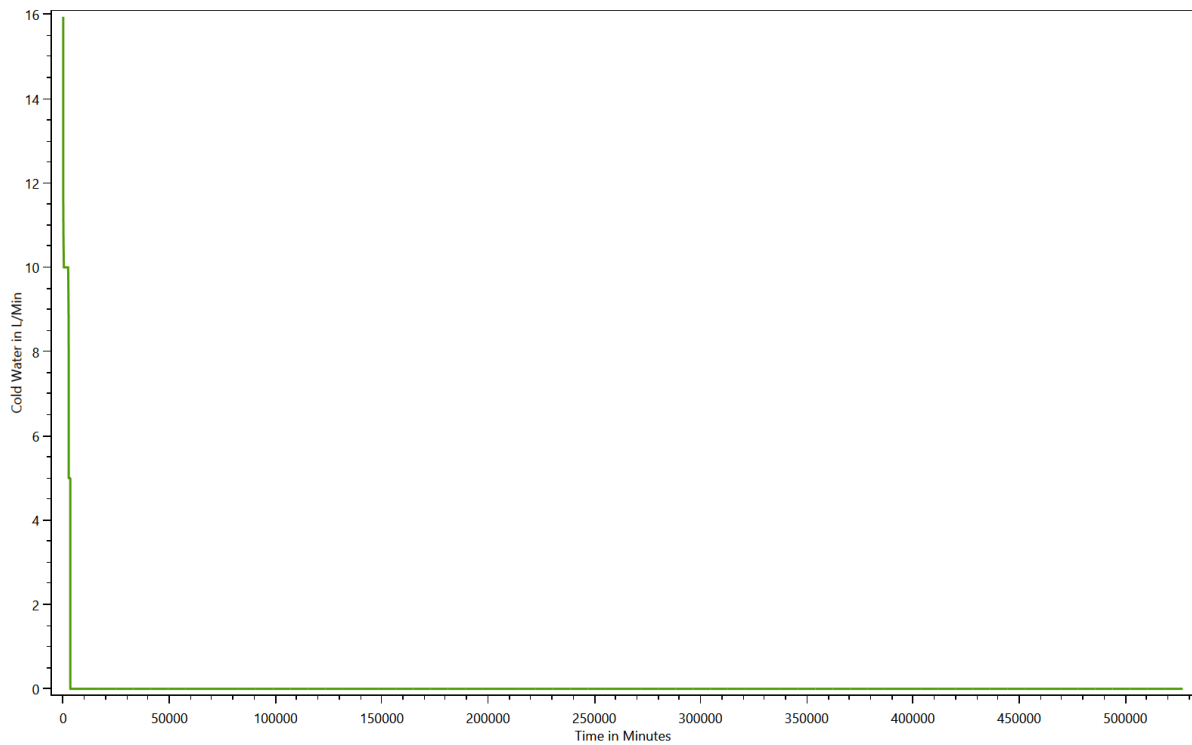


Duration curve for each load type

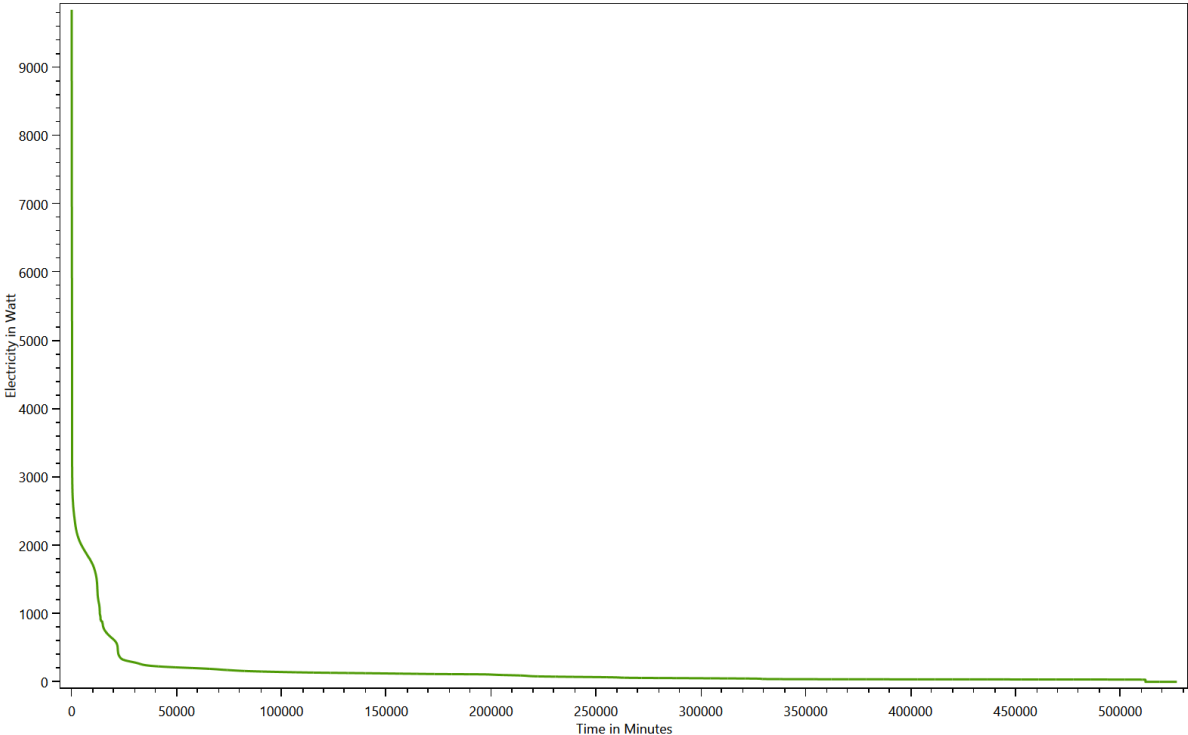
This is made from the files starting with: **DurationCurve**

The duration curve show the duration curve for the entire household to give an overview of the power consumption.

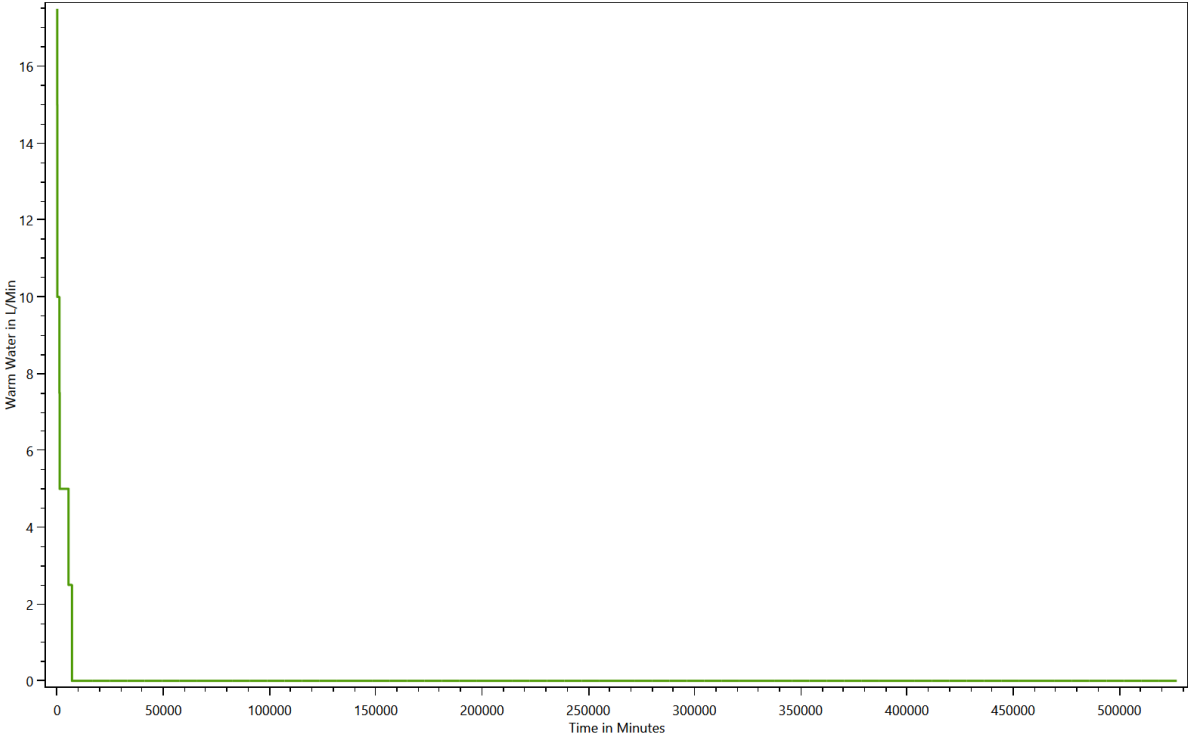
Cold Water



Electricity



Warm Water

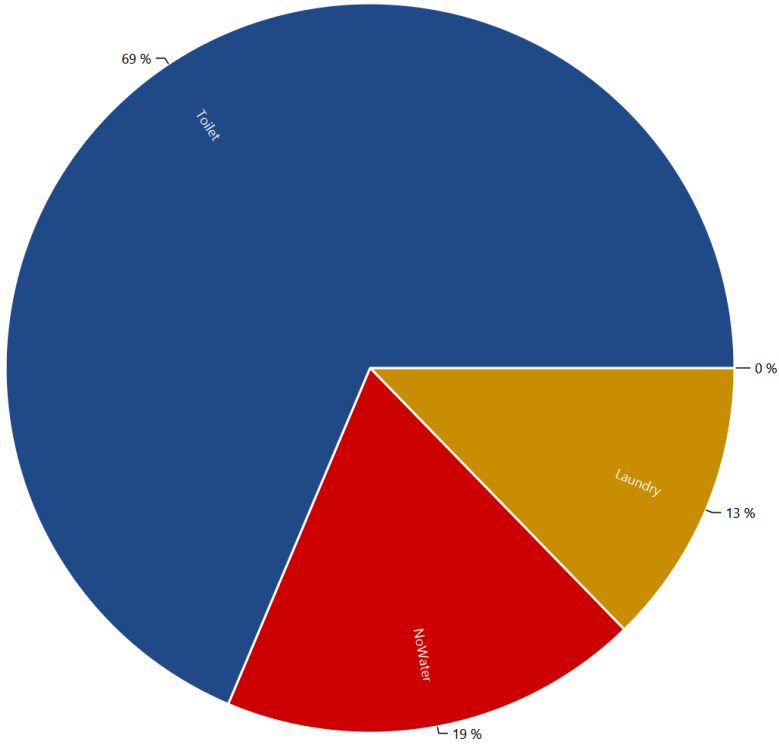


Grouped energy use for each load type for each device

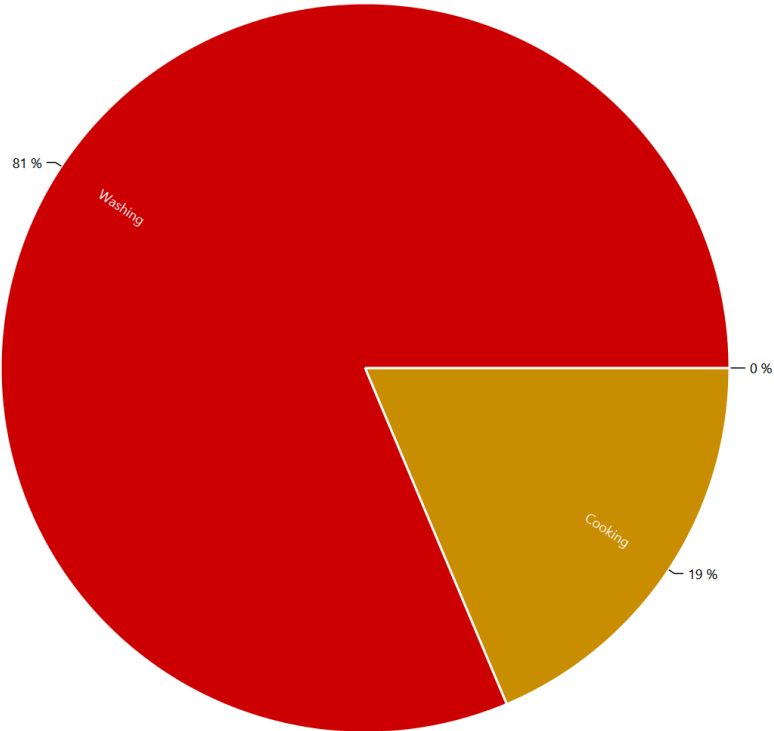
This is made from the files starting with: DeviceTaggingSet

The devices in the LPG can be grouped with various criteria by the device tagging sets. These charts show the results.

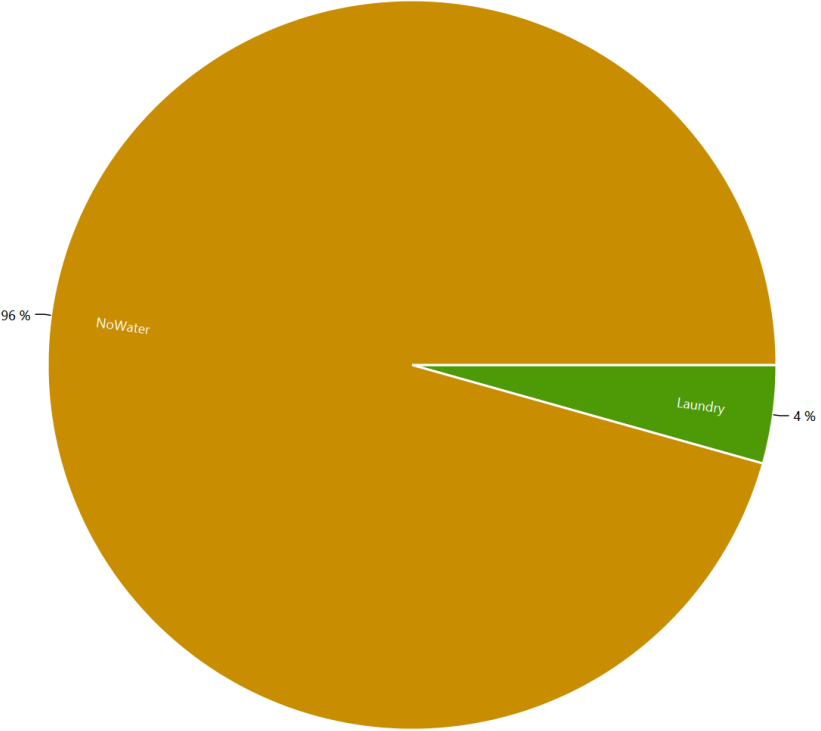
[HH0 - Destatis Water Usage Statistics - Cold Water](#)



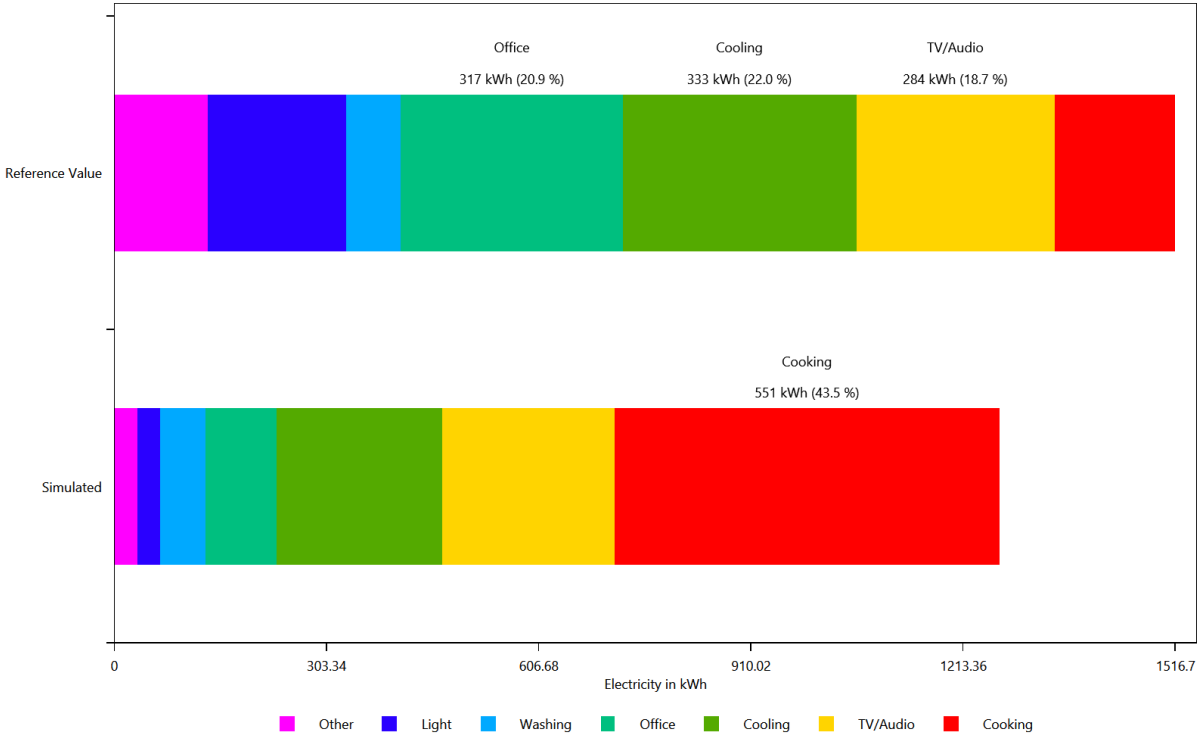
HH0 - Energieagentur - Cold Water



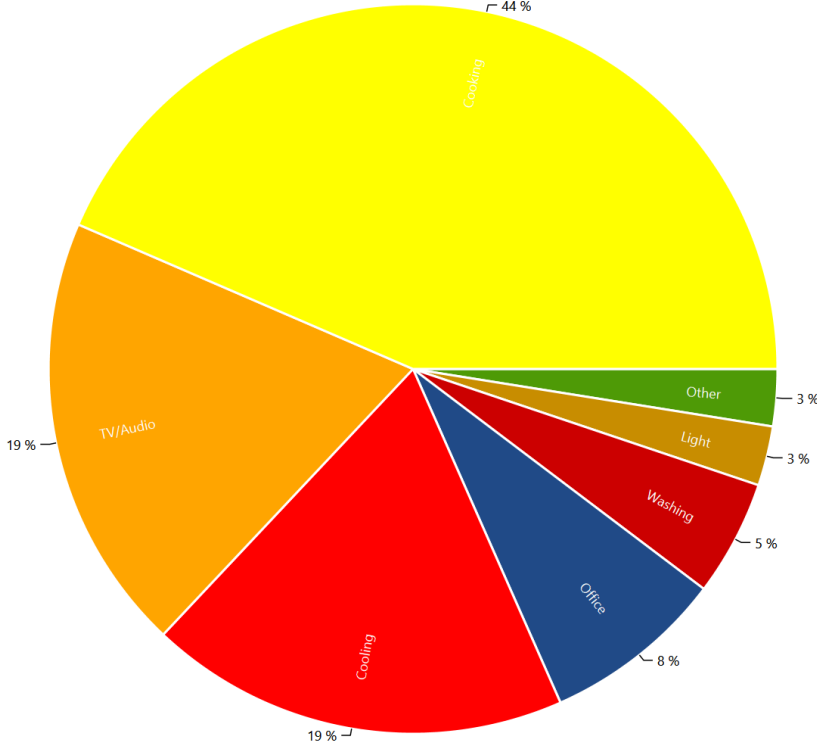
HH0 - Destatis Water Usage Statistics - Electricity



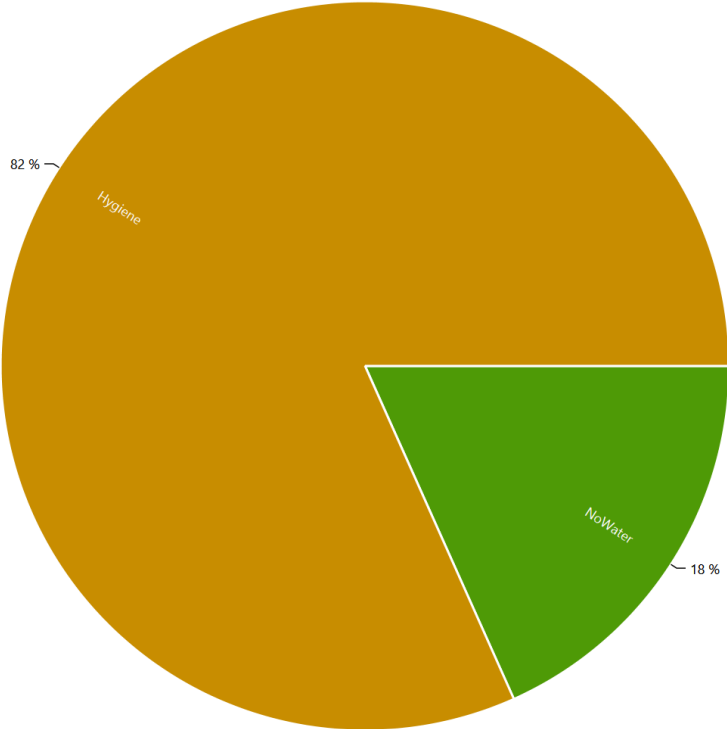
HH0 - Energieagentur - Electricity



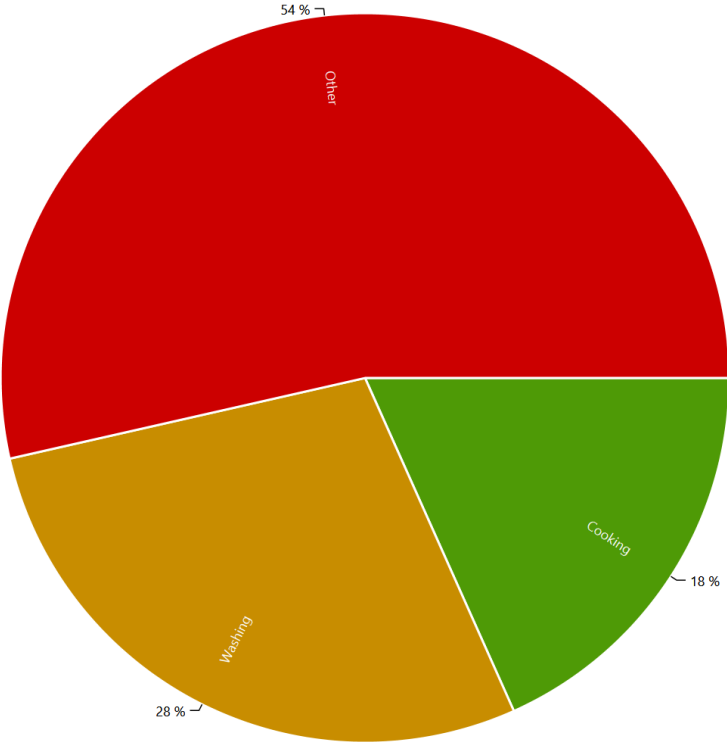
HH0 - Energieagentur - Electricity



HH0 - Destatis Water Usage Statistics - Warm Water



HH0 - Energieagentur - Warm Water

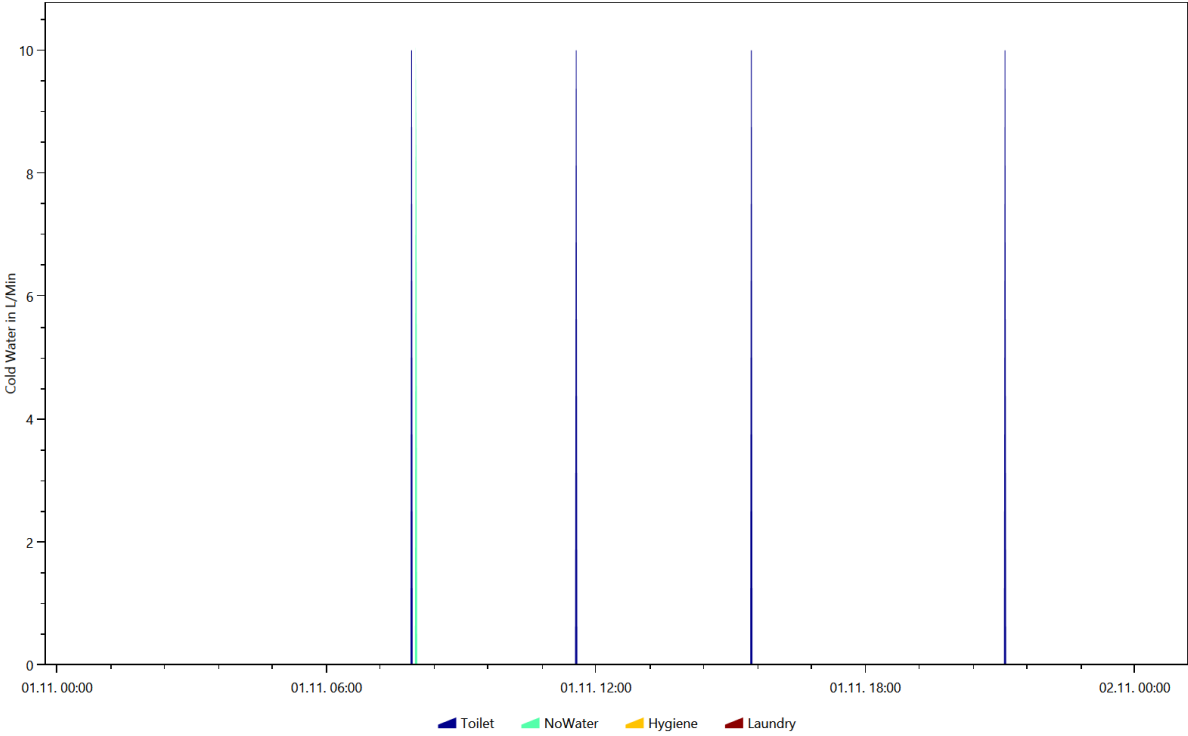


Example of the device profiles for each load type

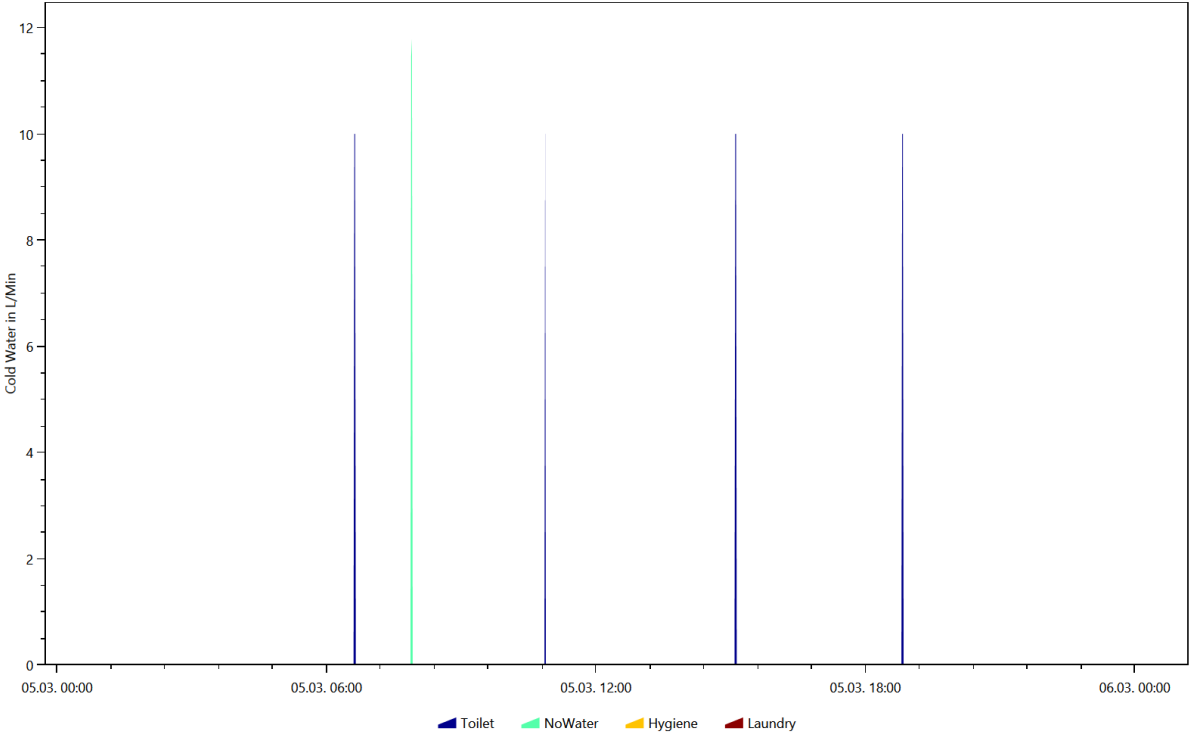
This is made from the files starting with: DeviceProfiles

The device profile files are the reason for the LPG. They show the power consumption of each device.

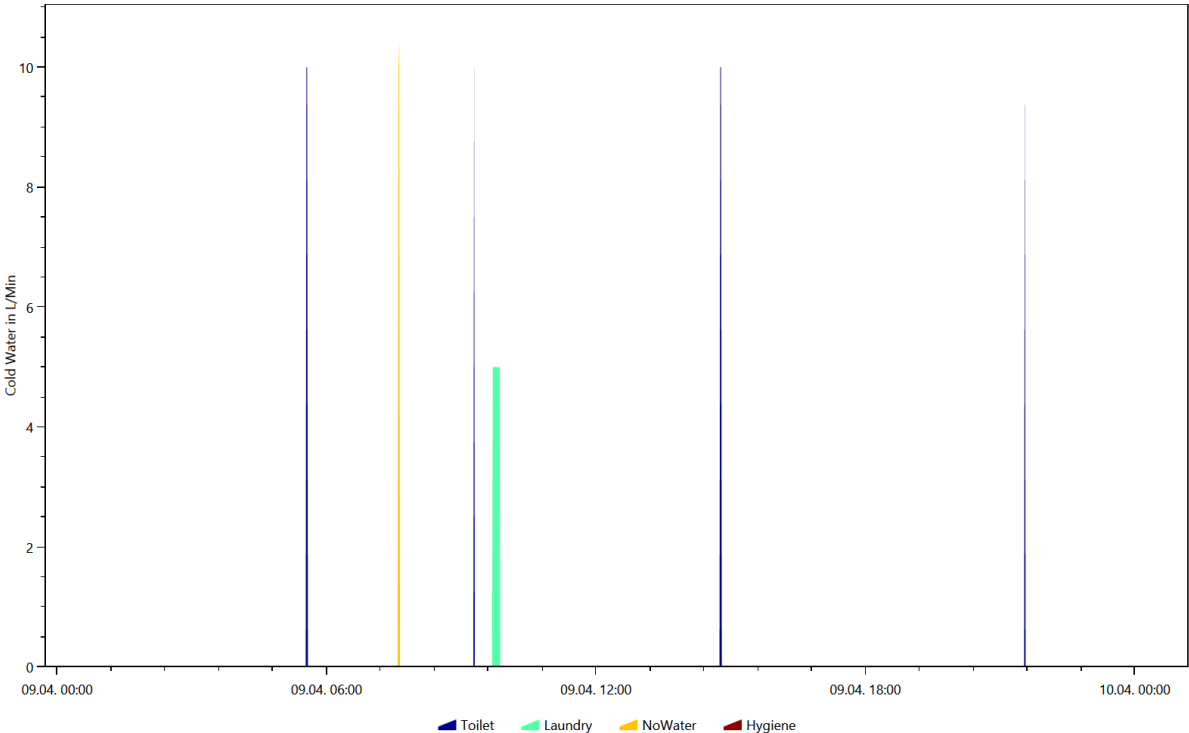
Cold Water, Coloring Scheme: Destatis Water Usage Statistics, Date 2016.11.1



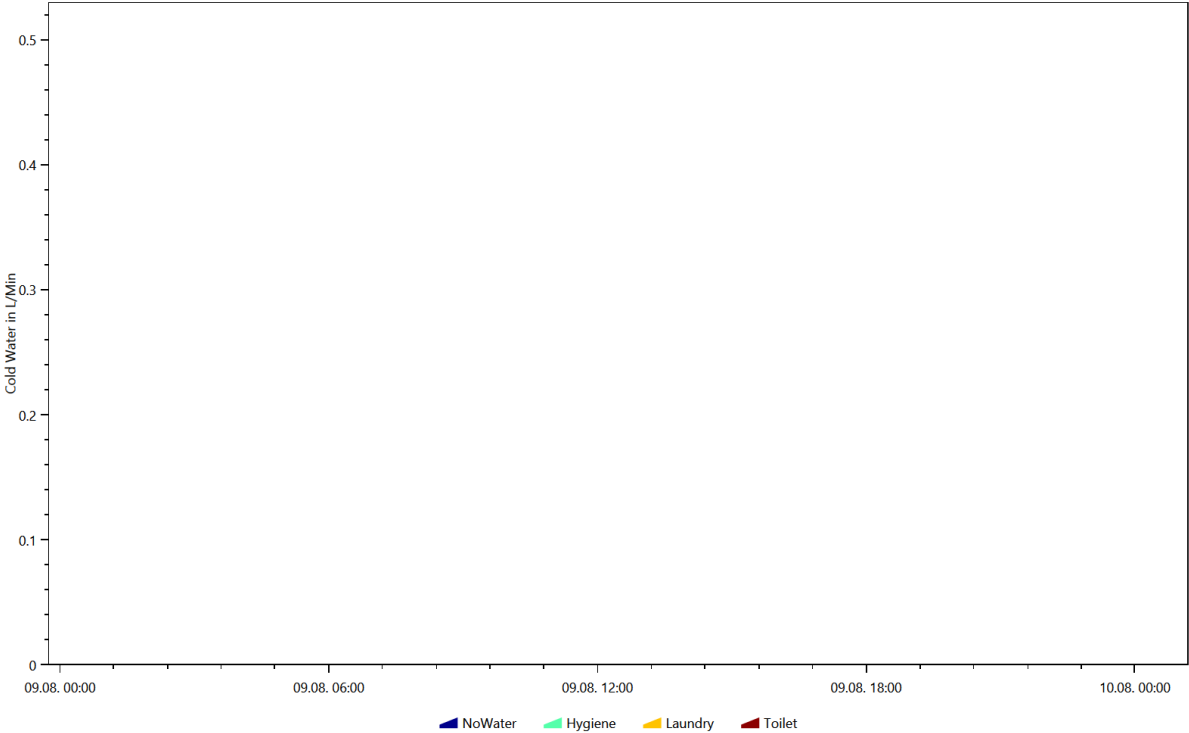
Cold Water, Coloring Scheme: Destatis Water Usage Statistics, Date 2016.3.5



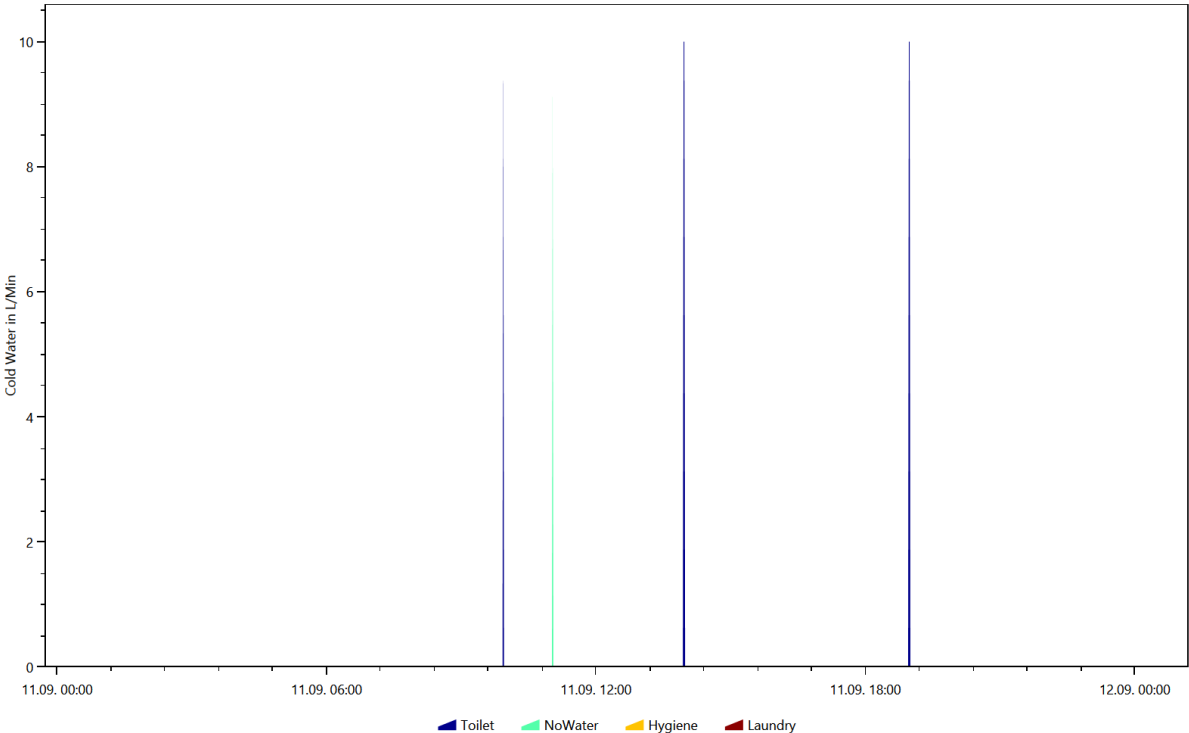
Cold Water, Coloring Scheme: Destatis Water Usage Statistics, Date 2016.4.9



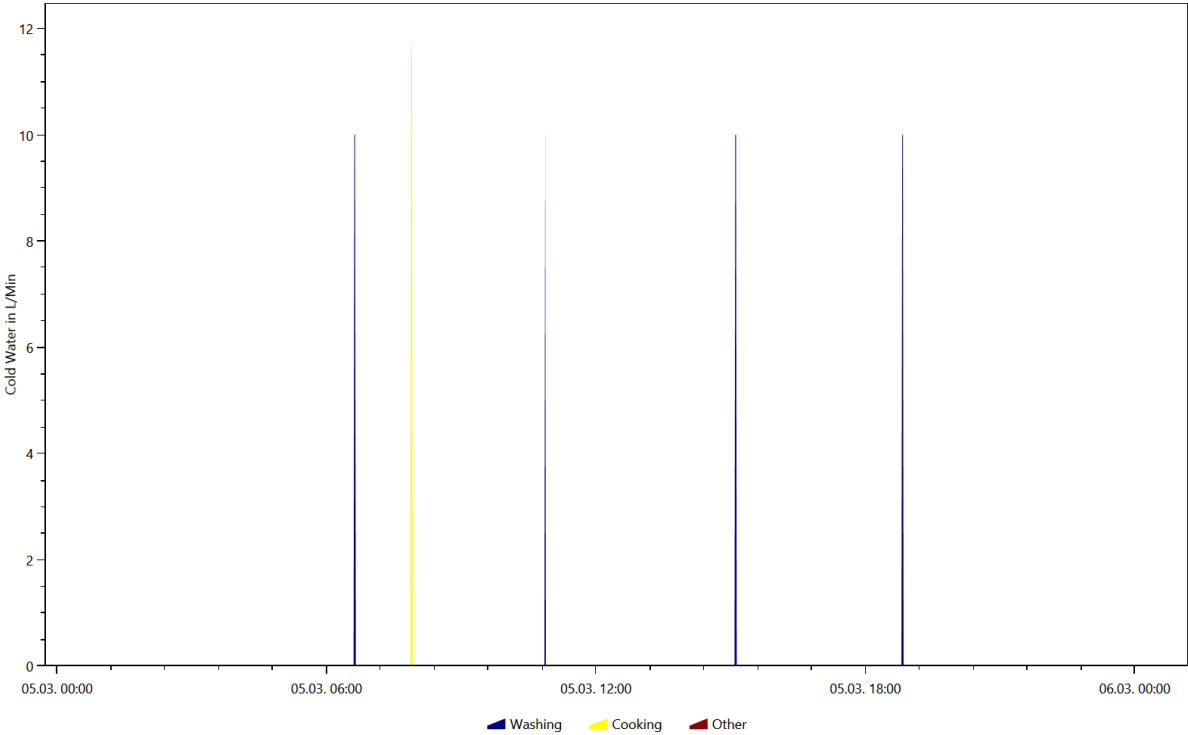
Cold Water, Coloring Scheme: Destatis Water Usage Statistics, Date 2016.8.9



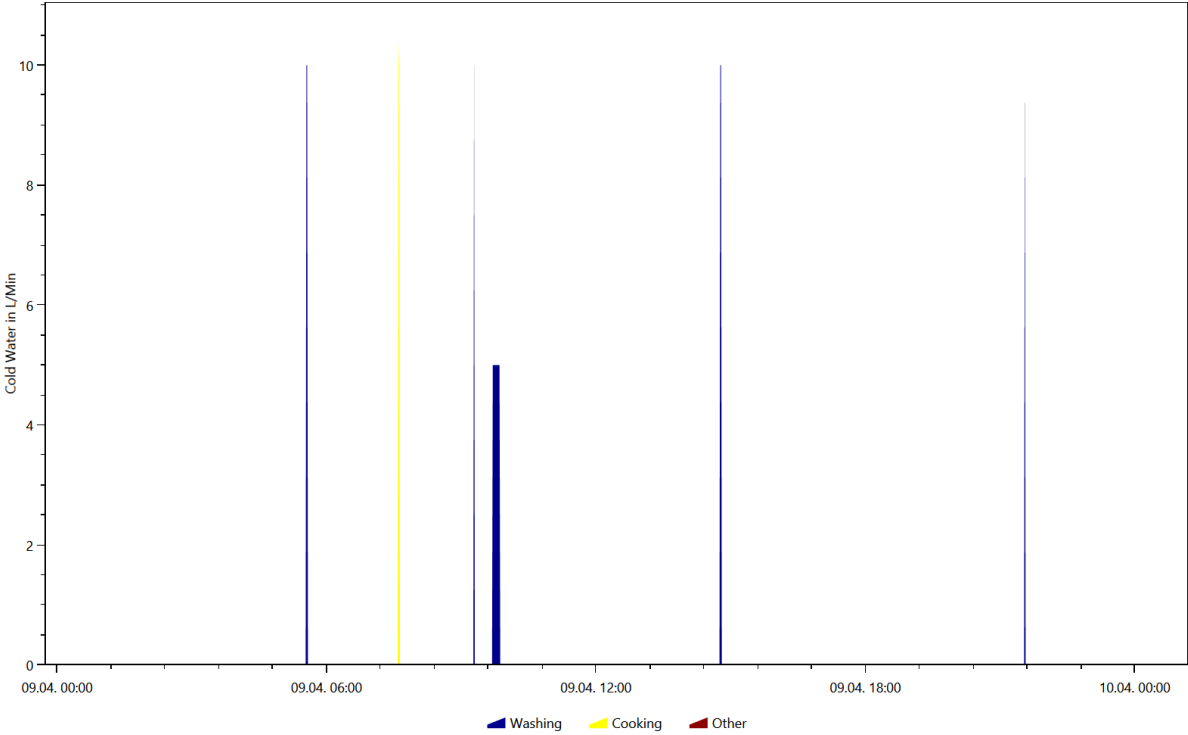
Cold Water, Coloring Scheme: Destatis Water Usage Statistics, Date 2016.9.11



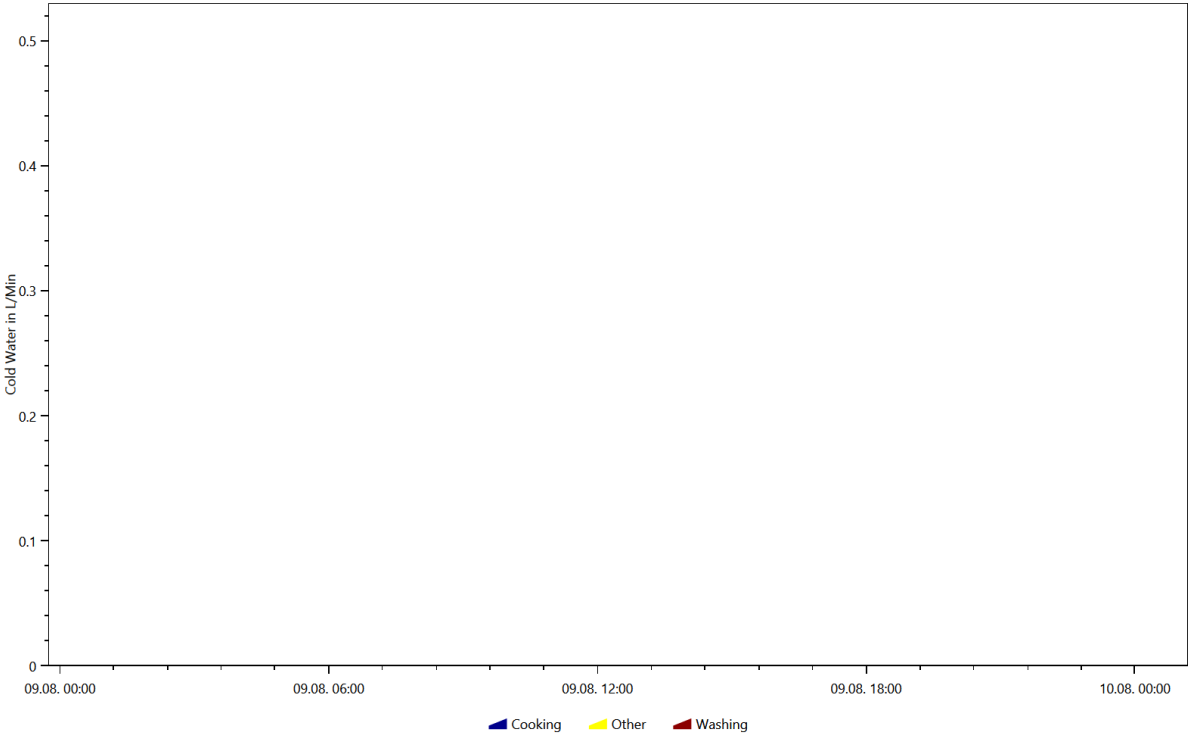
Cold Water, Coloring Scheme: Energieagentur.NRW Tags, Date 2016.3.5



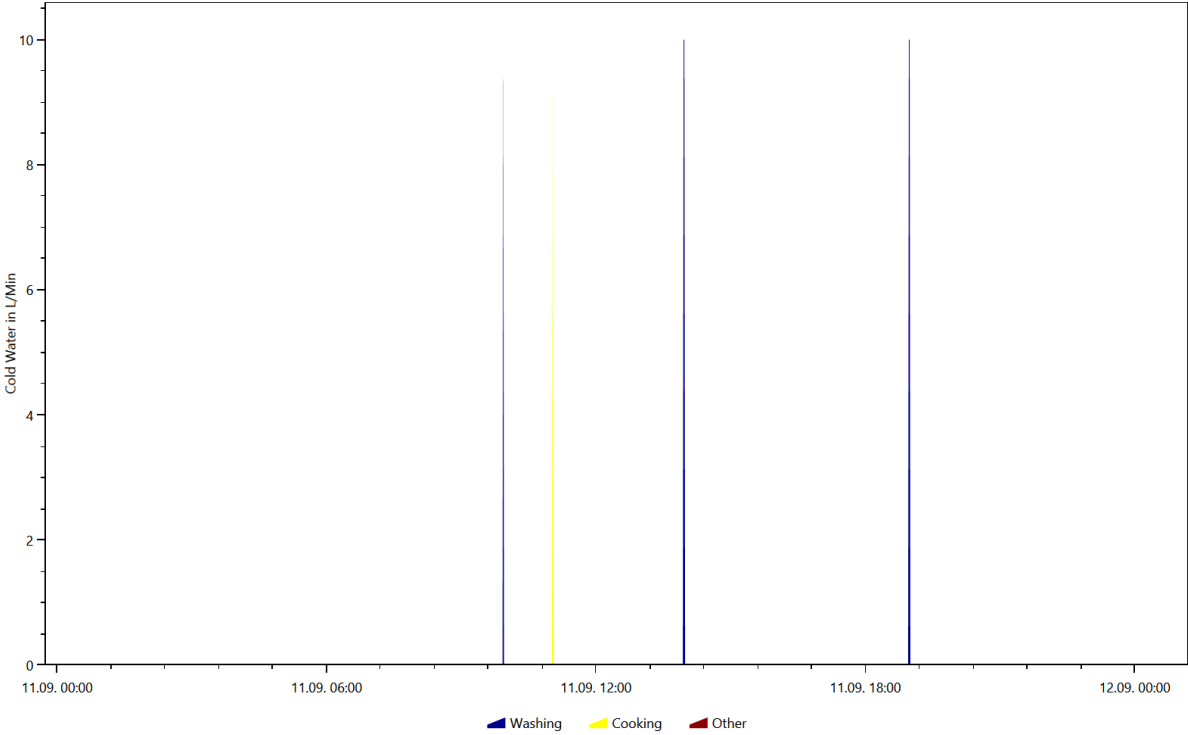
Cold Water, Coloring Scheme: Energieagentur.NRW Tags, Date 2016.4.9



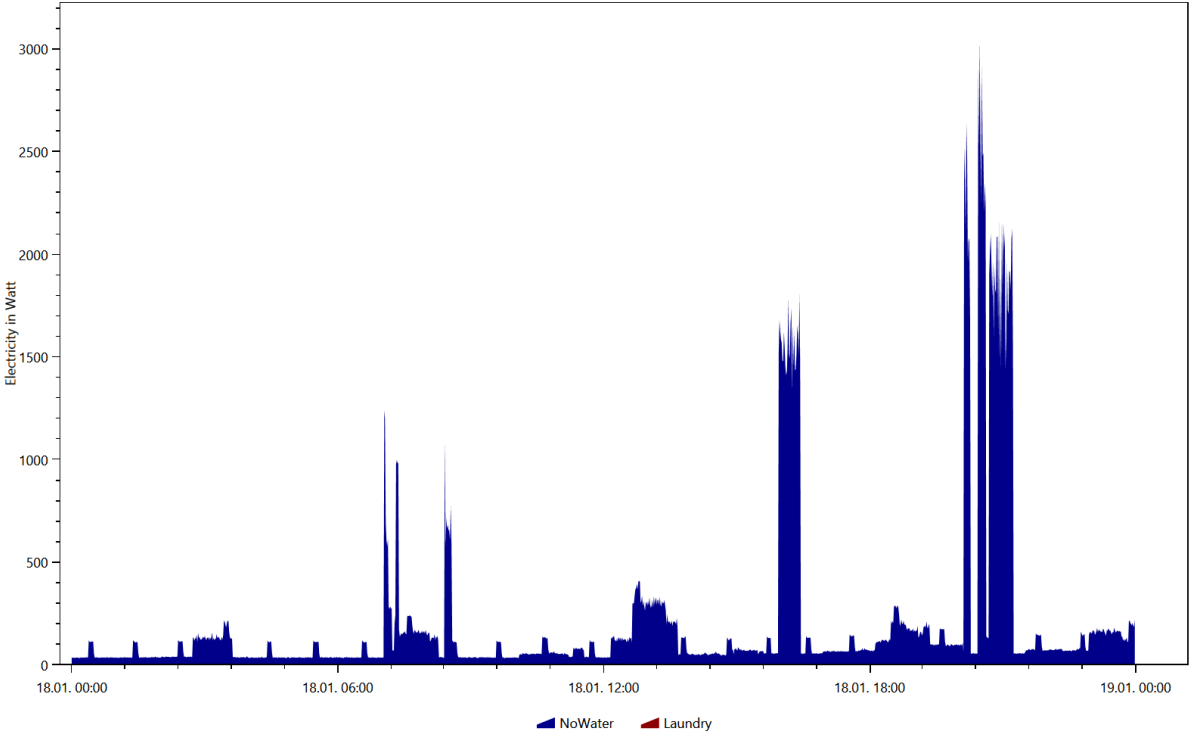
Cold Water, Coloring Scheme: Energieagentur.NRW Tags, Date 2016.8.9



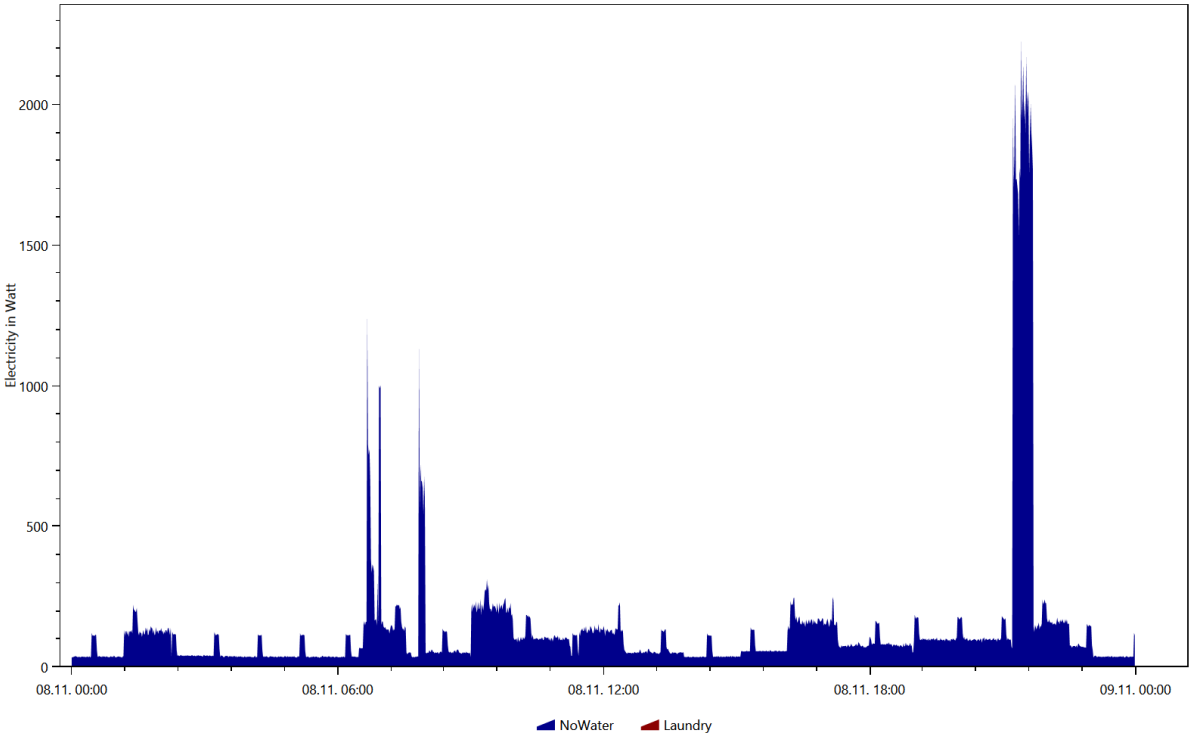
Cold Water, Coloring Scheme: Energieagentur.NRW Tags, Date 2016.9.11



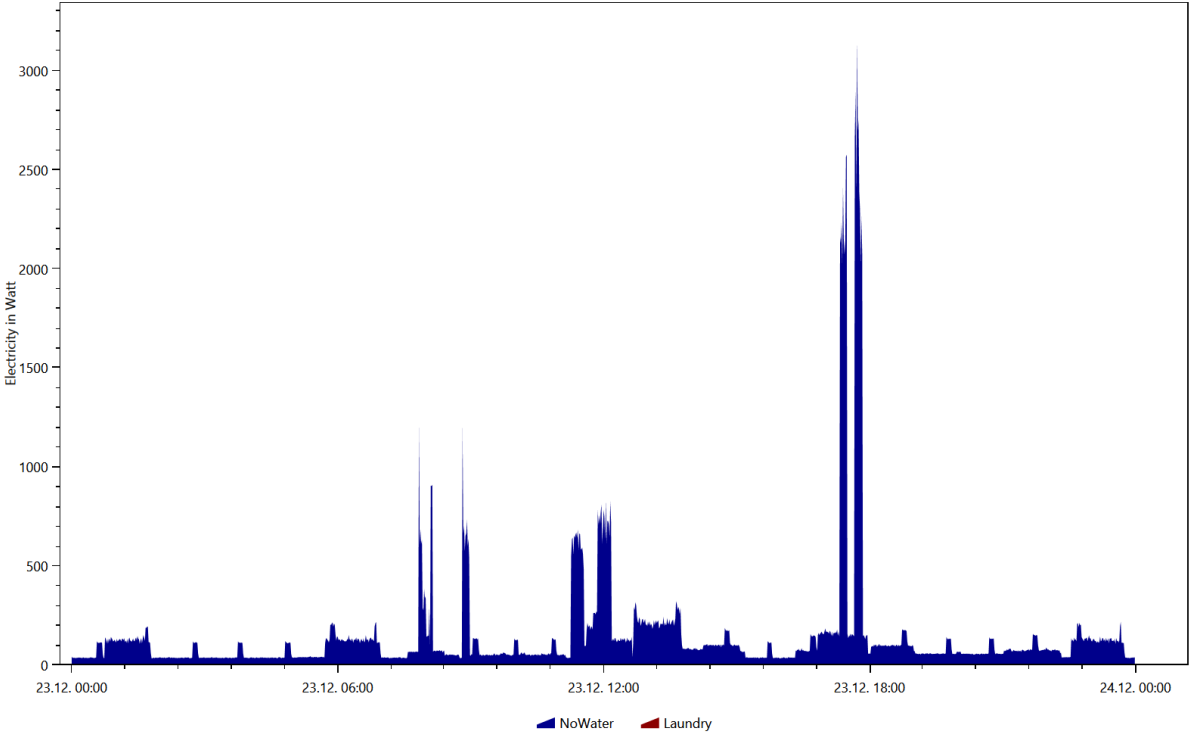
Electricity, Coloring Scheme: Destatis Water Usage Statistics, Date 2016.1.18



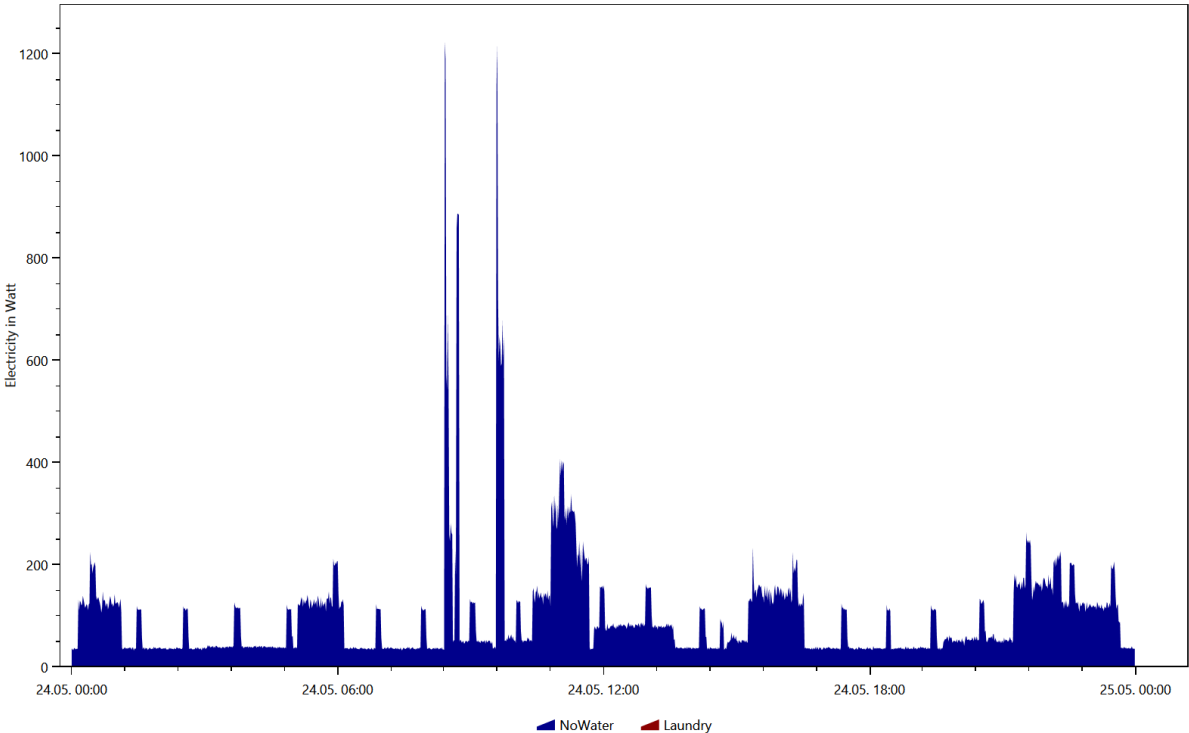
Electricity, Coloring Scheme: Destatis Water Usage Statistics, Date 2016.11.8



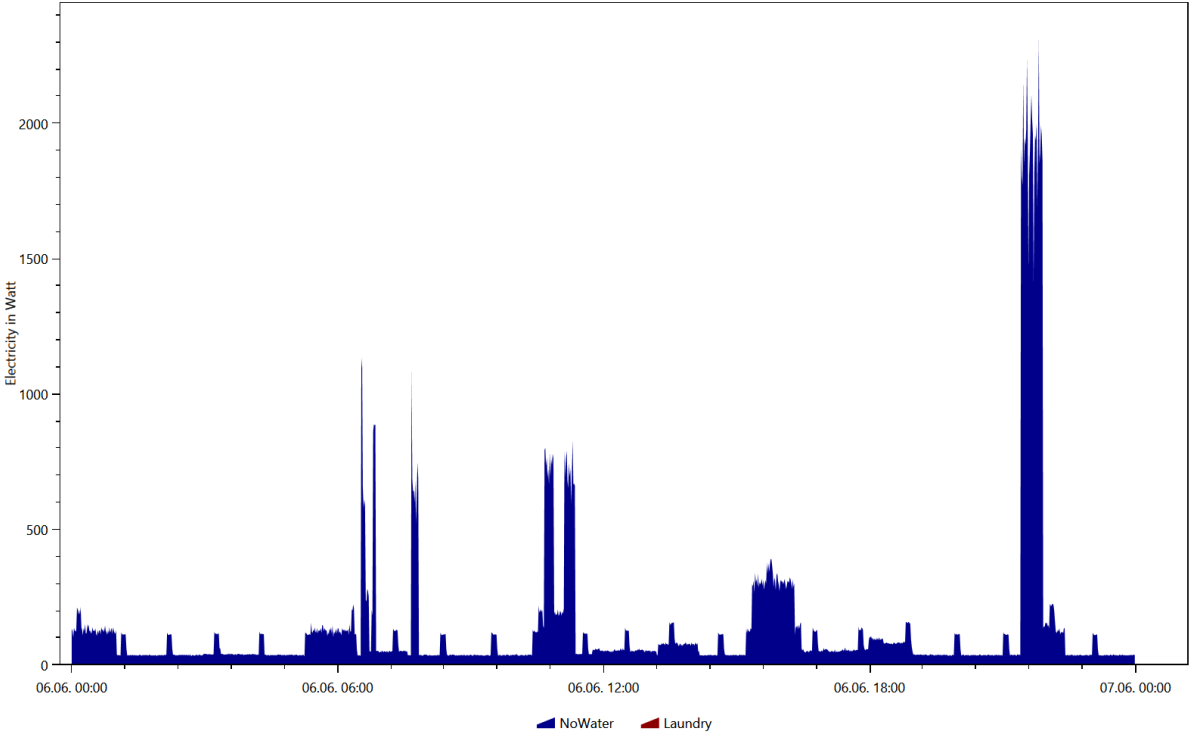
Electricity, Coloring Scheme: Destatis Water Usage Statistics, Date 2016.12.23



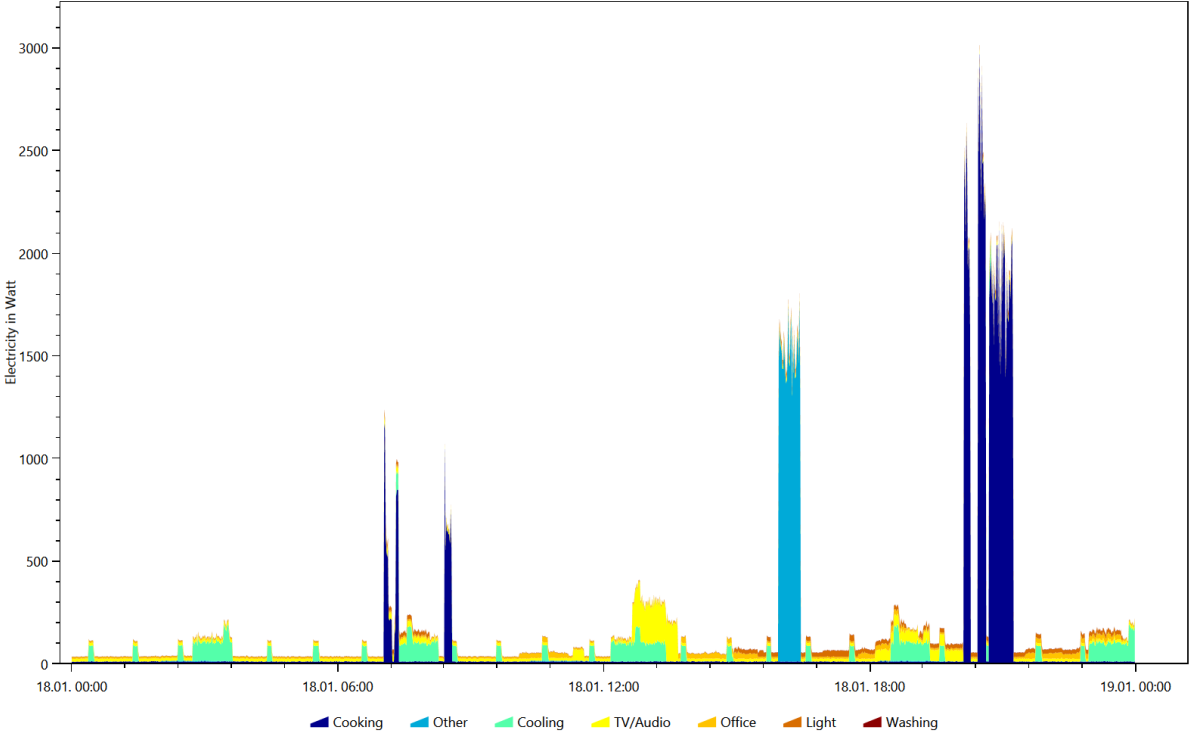
Electricity, Coloring Scheme: Destatis Water Usage Statistics, Date 2016.5.24



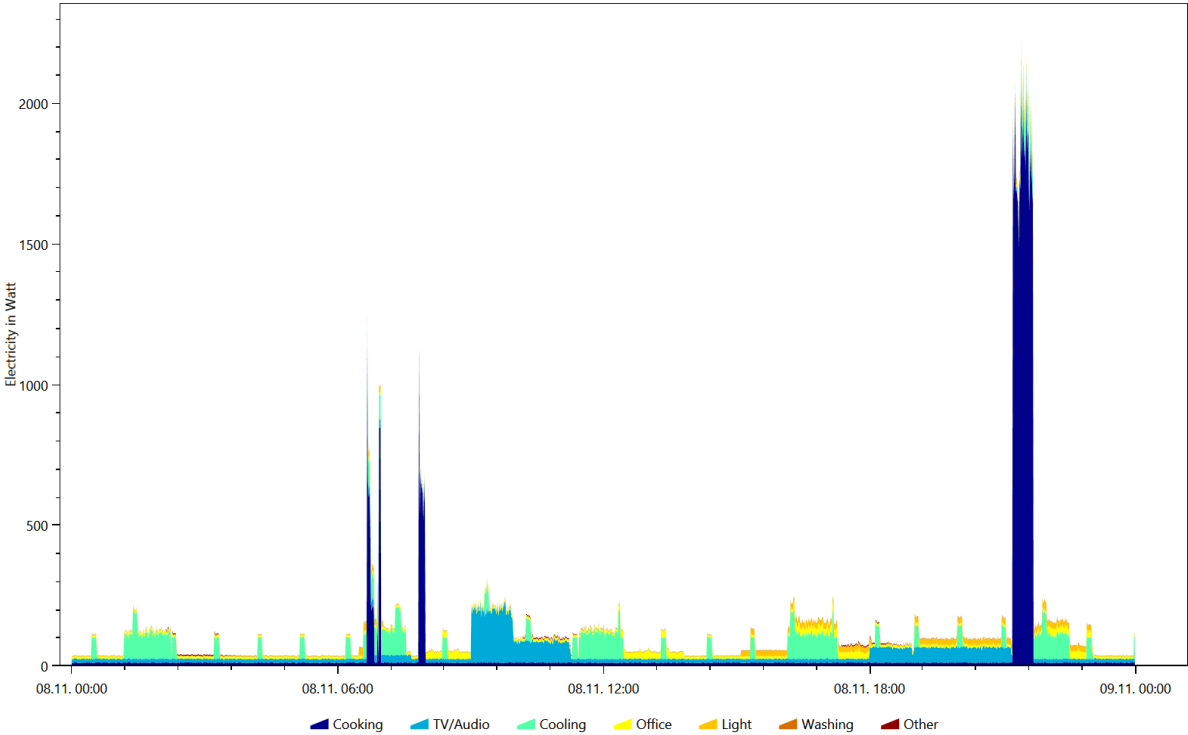
Electricity, Coloring Scheme: Destatis Water Usage Statistics, Date 2016.6.6



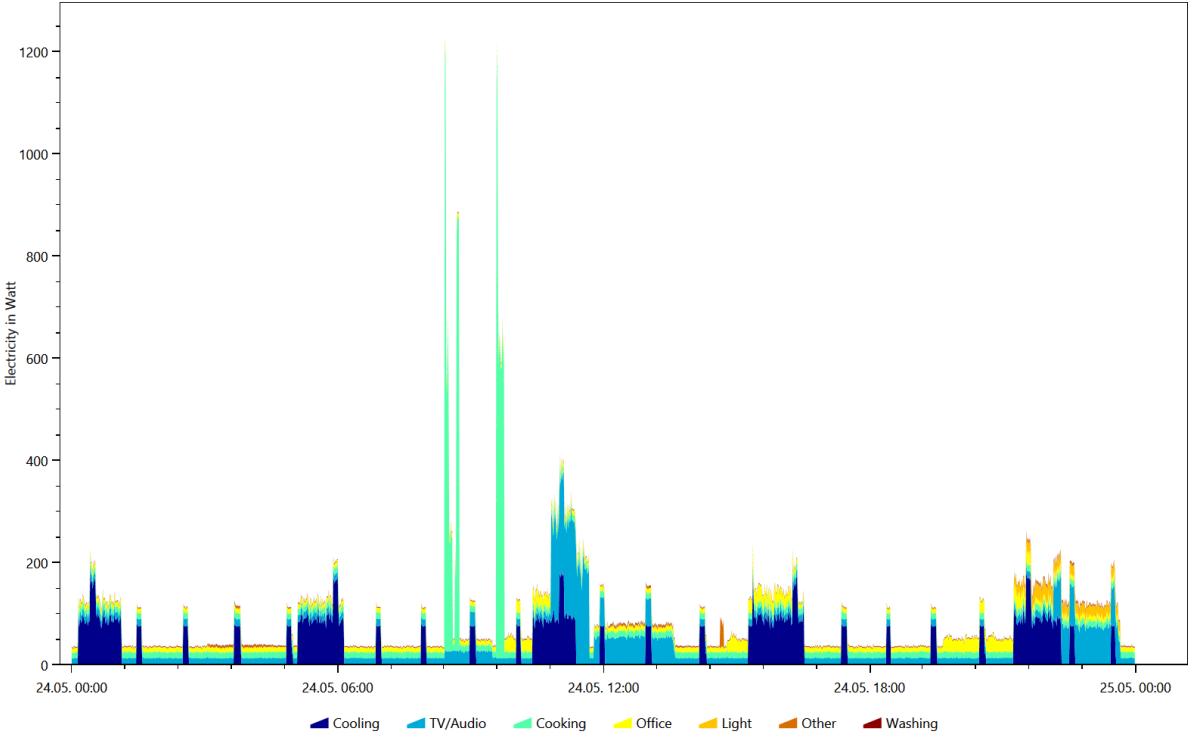
Electricity, Coloring Scheme: Energieagentur.NRW Tags, Date 2016.1.18



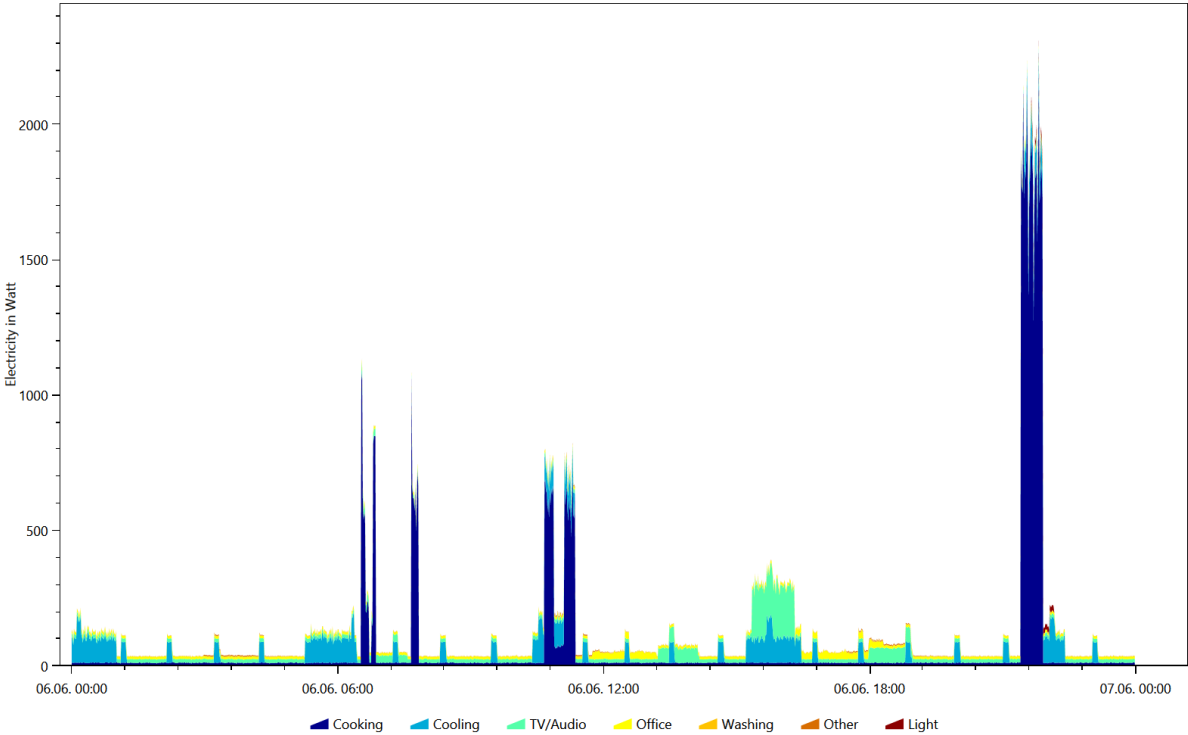
Electricity, Coloring Scheme: Energieagentur.NRW Tags, Date 2016.11.8



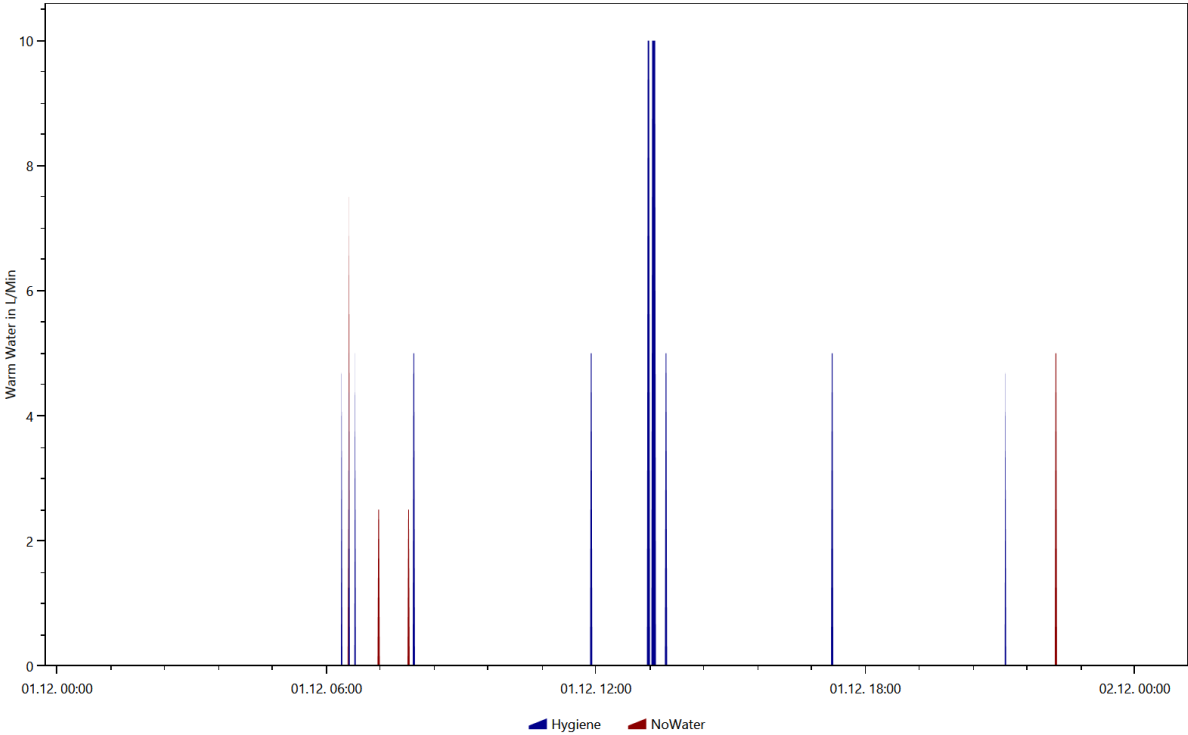
Electricity, Coloring Scheme: Energieagentur.NRW Tags, Date 2016.5.24



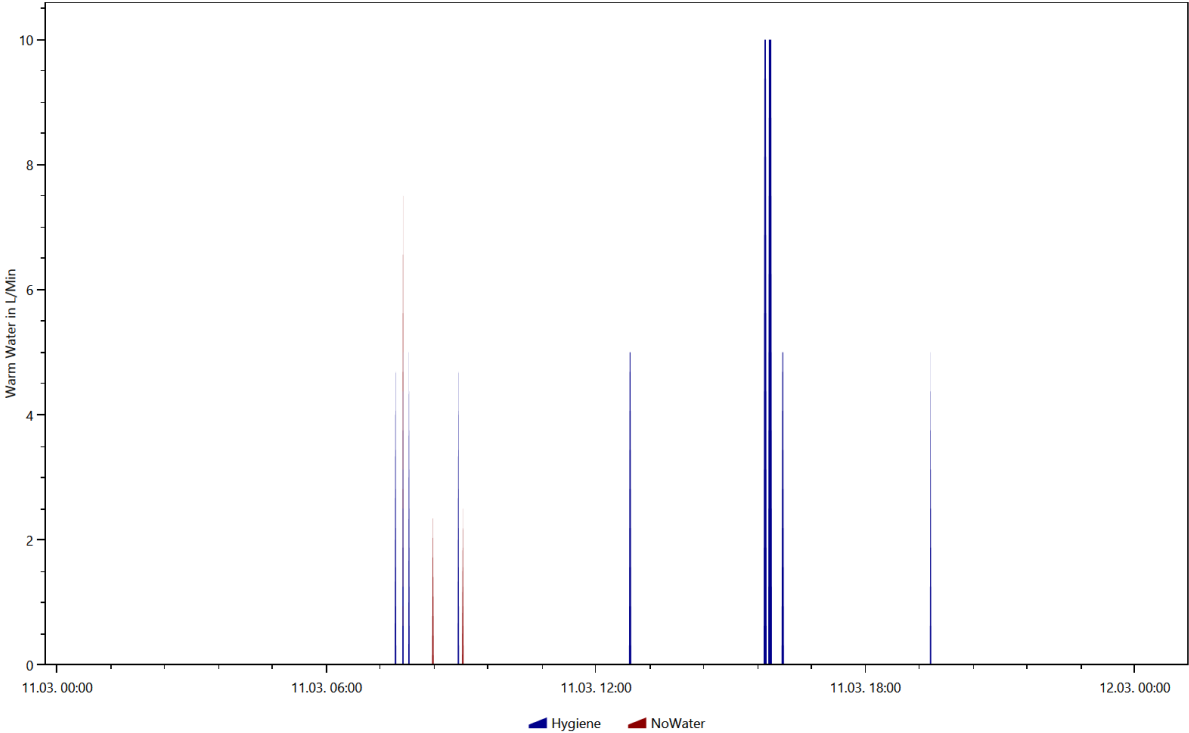
Electricity, Coloring Scheme: Energieagentur.NRW Tags, Date 2016.6.6



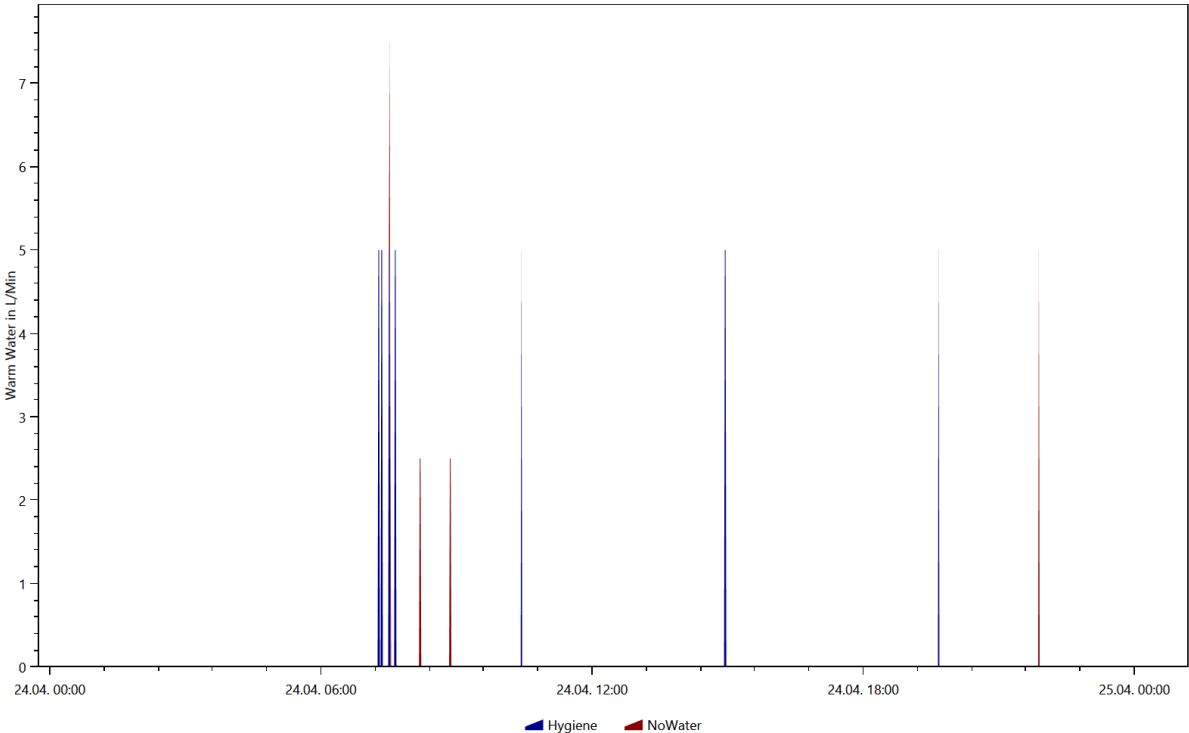
Warm Water, Coloring Scheme: Destatis Water Usage Statistics, Date 2016.12.1



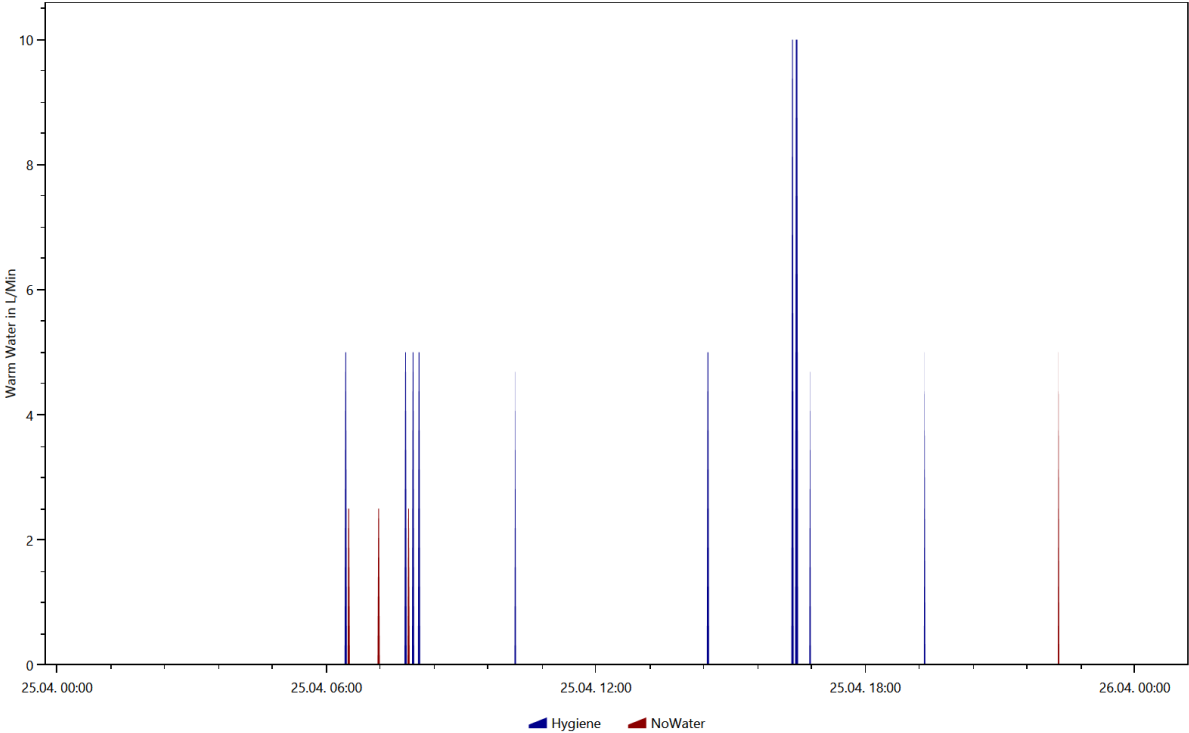
Warm Water, Coloring Scheme: Destatis Water Usage Statistics, Date 2016.3.11



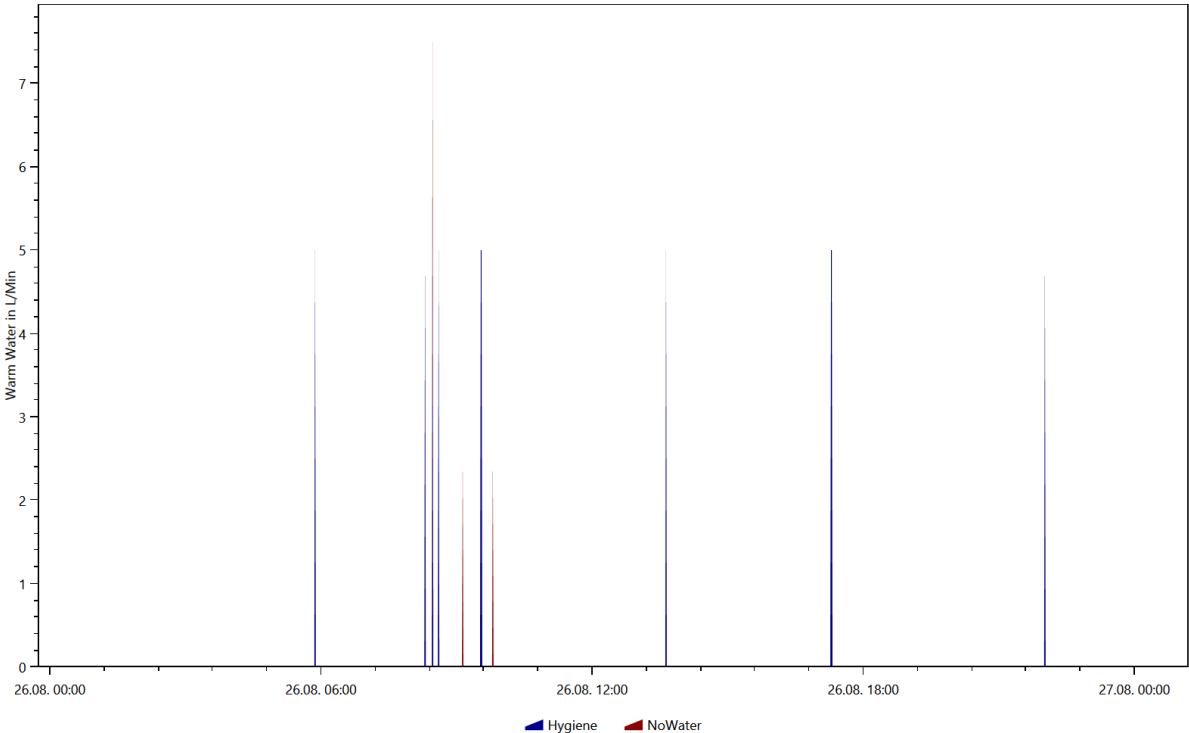
Warm Water, Coloring Scheme: Destatis Water Usage Statistics, Date 2016.4.24



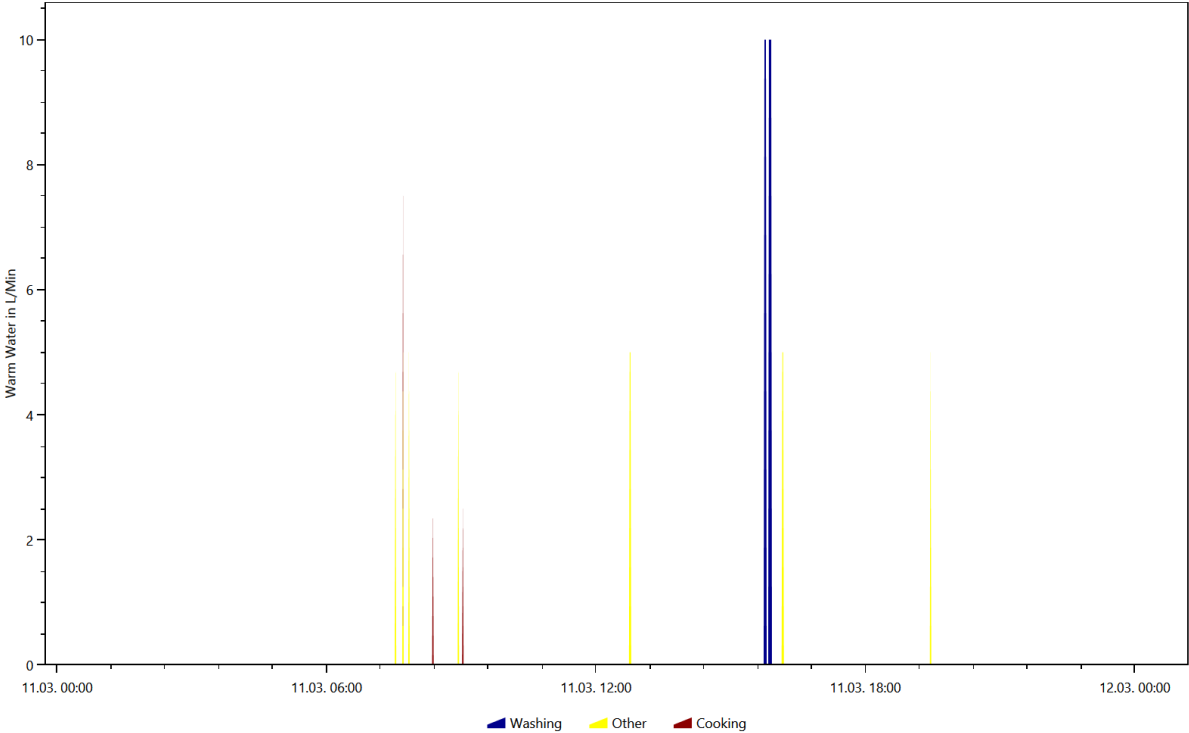
Warm Water, Coloring Scheme: Destatis Water Usage Statistics, Date 2016.4.25



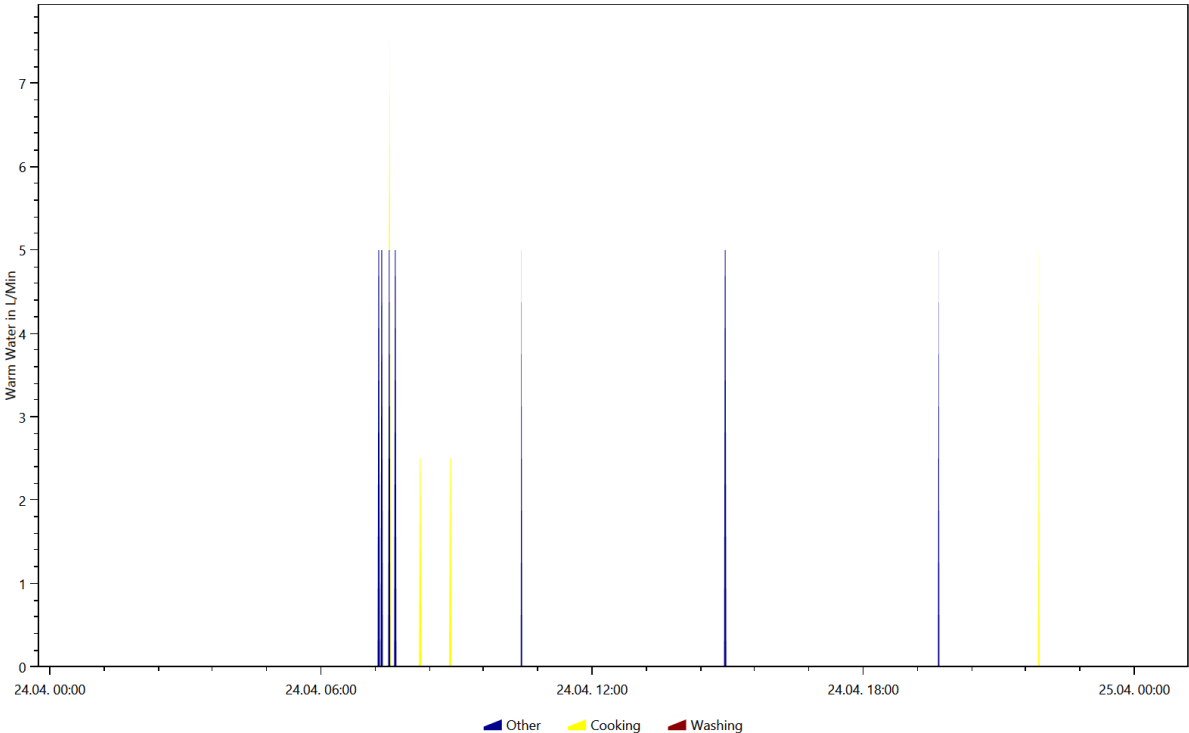
Warm Water, Coloring Scheme: Destatis Water Usage Statistics, Date 2016.8.26



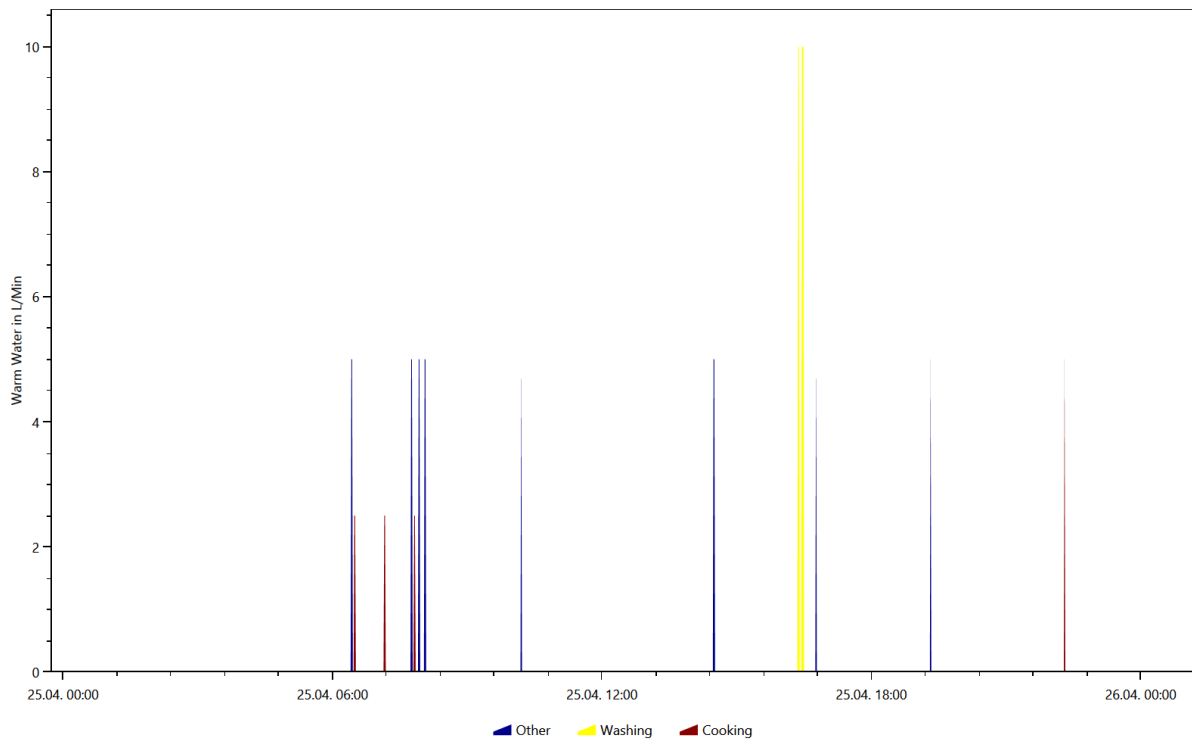
Warm Water, Coloring Scheme: Energieagentur.NRW Tags, Date 2016.3.11



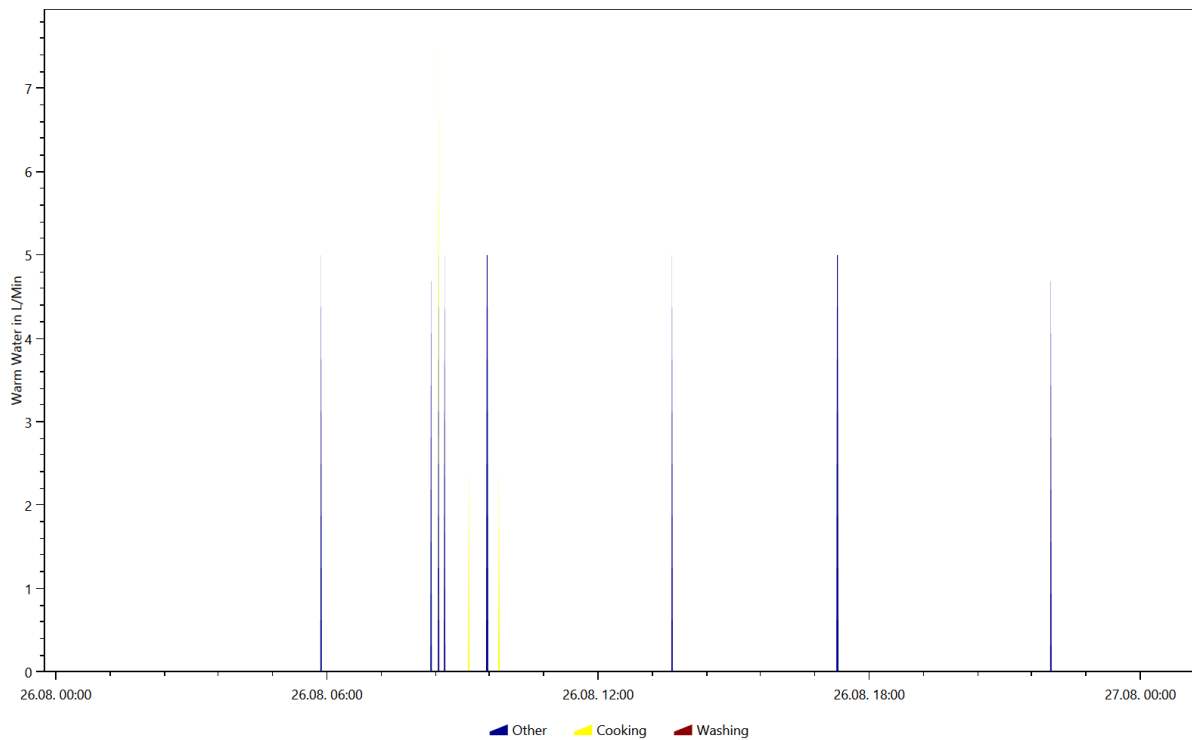
Warm Water, Coloring Scheme: Energieagentur.NRW Tags, Date 2016.4.24



Warm Water, Coloring Scheme: Energieagentur.NRW Tags, Date 2016.4.25



Warm Water, Coloring Scheme: Energieagentur.NRW Tags, Date 2016.8.26

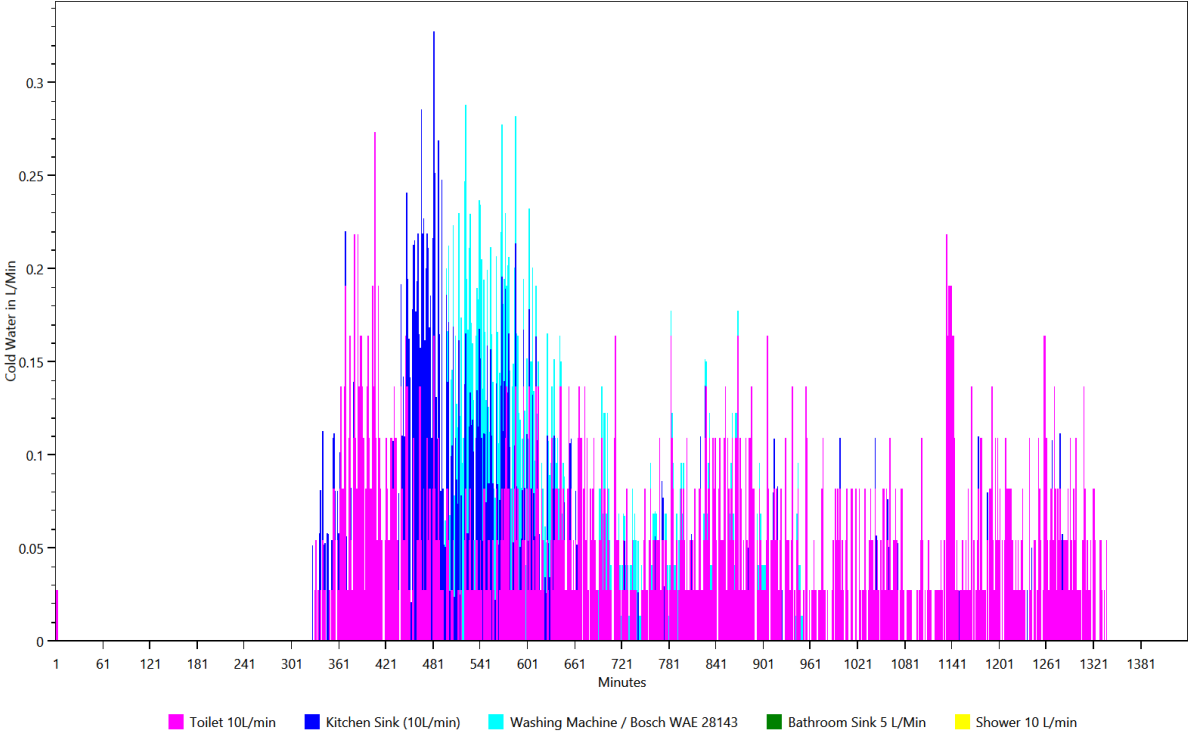


Overview of the time and power of the use per load type per device

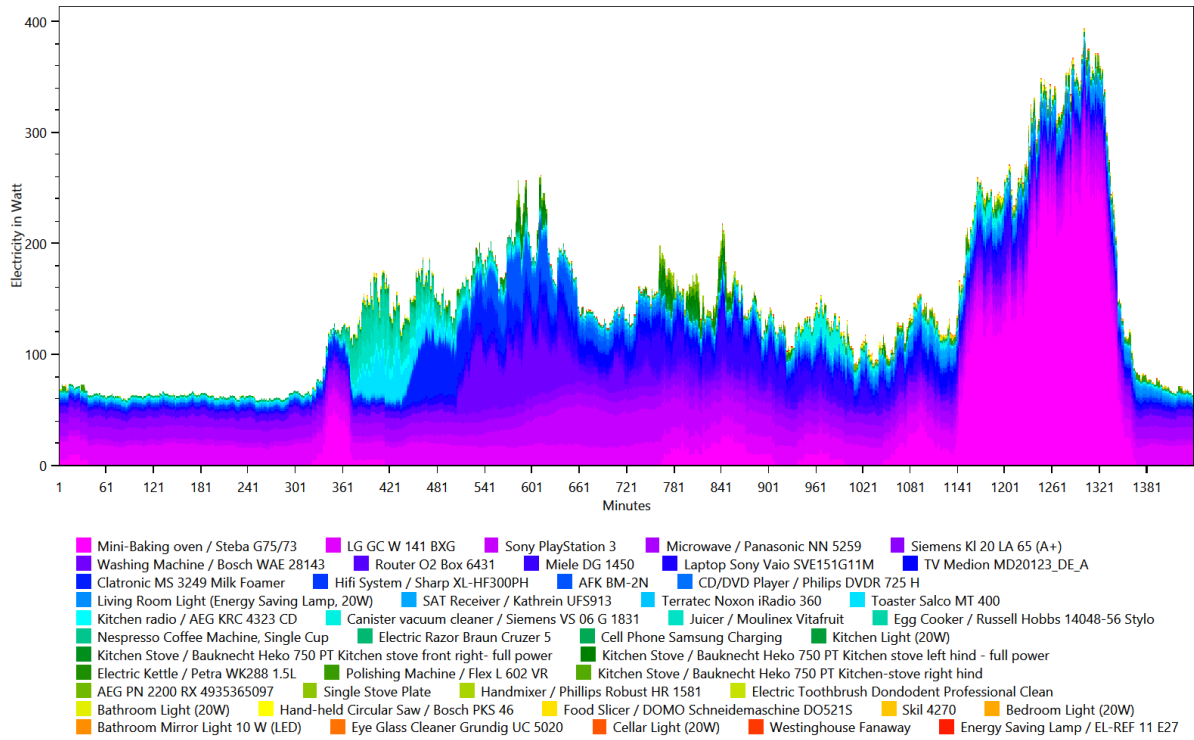
This is made from the files starting with: TimeOfUseEnergyProfiles

The time of use energy profiles show when each device was used and how much power it used.

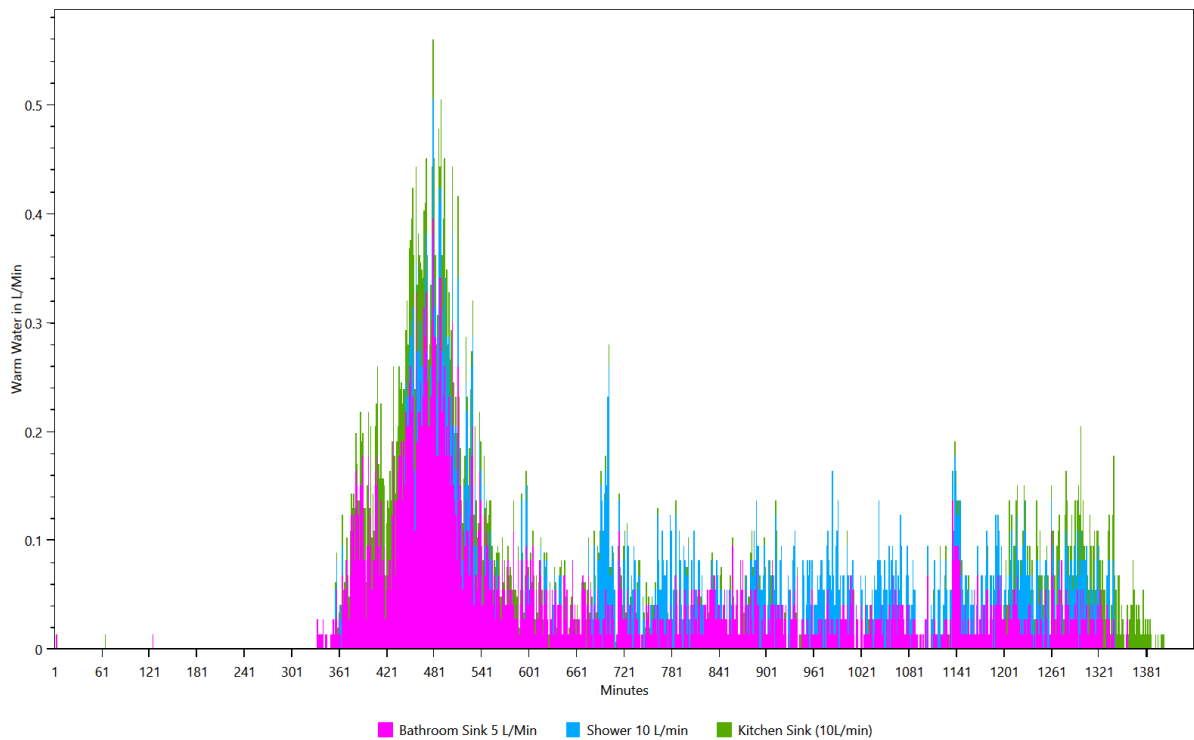
Cold Water



Electricity



Warm Water

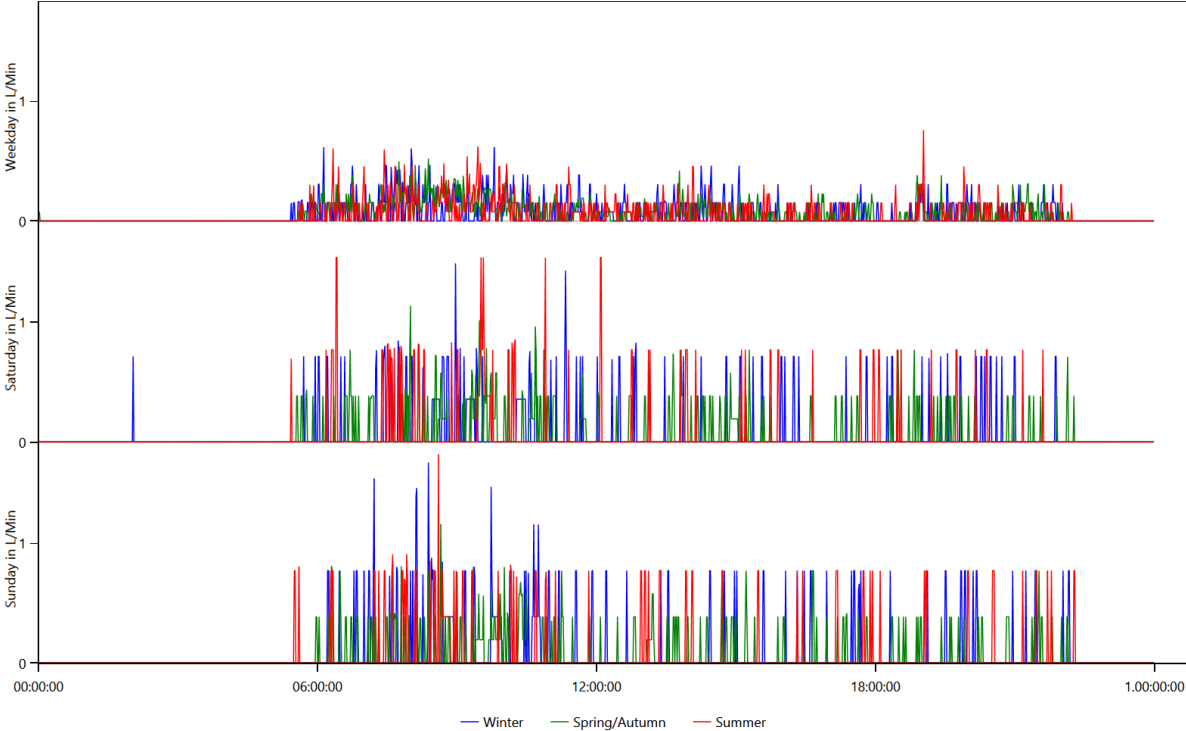


Energy use per load type during different seasons, split by weekday/saturday/sunday

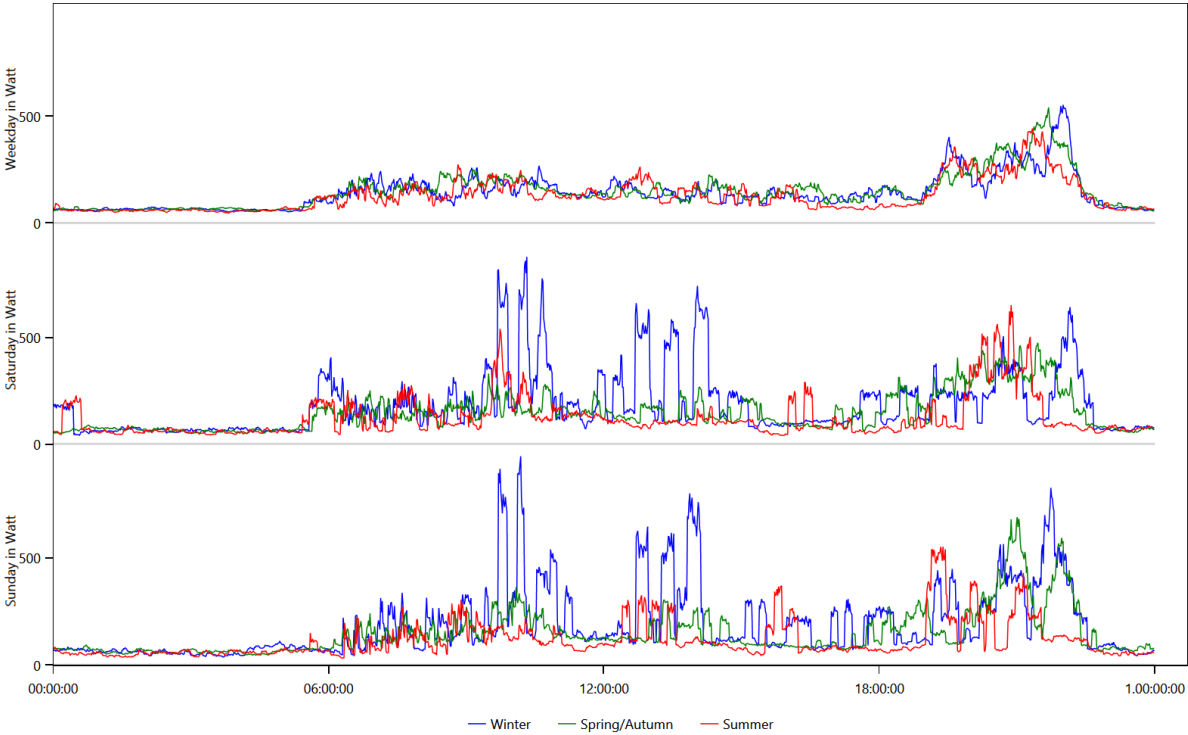
This is made from the files starting with: WeekdayProfiles

This graph shows for each load type the average power consumption per day grouped by season and weekday/saturday/sunday.

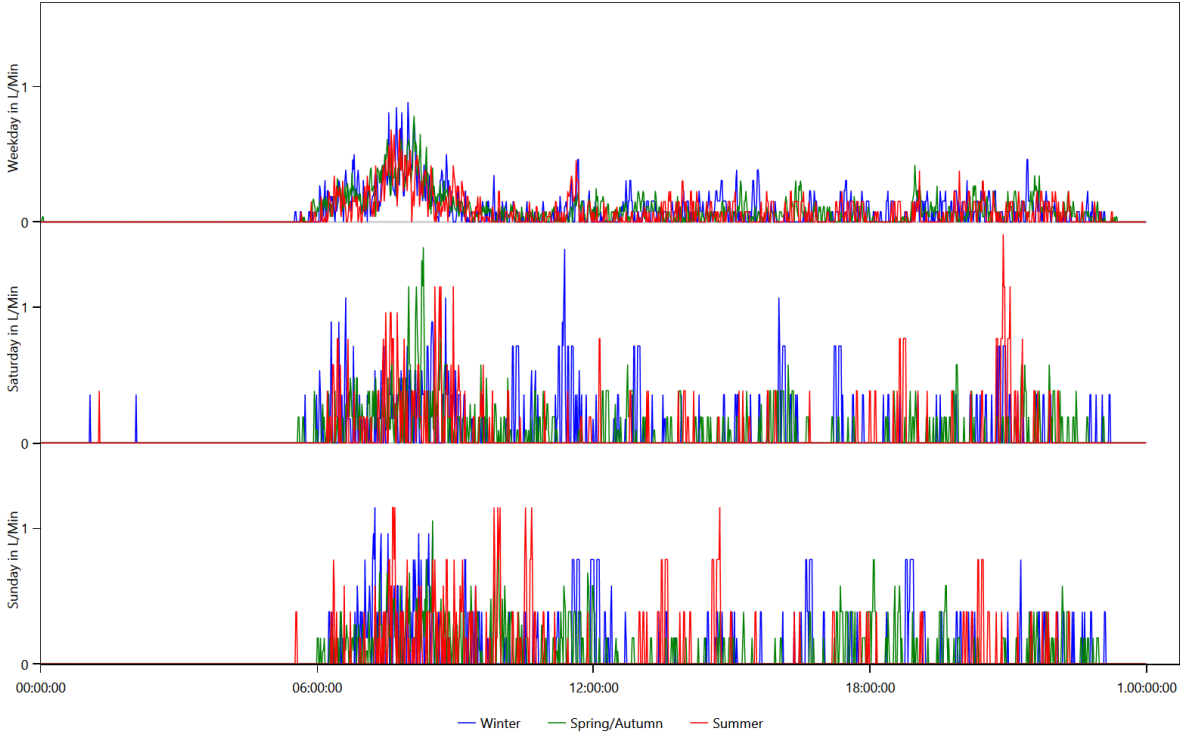
Cold Water



Electricity



Warm Water

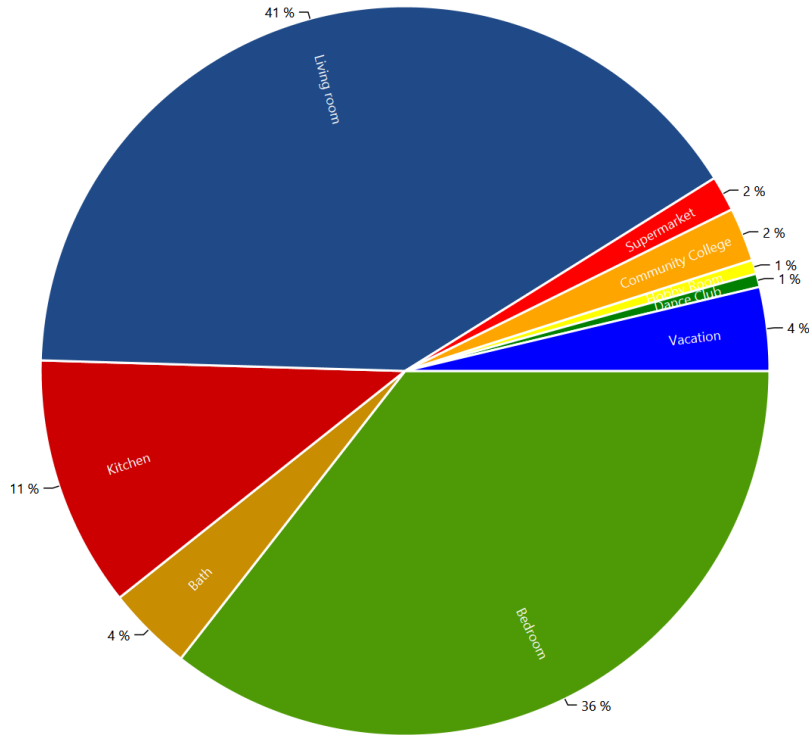


Location Distribution per Person

This is made from the files starting with: LocationStatistics

These charts show where the persons spend their time.

CHR06 Jak Jobless (30 Male)



Actions.csv

This is made from the files starting with: Actions

These files show the actions of each person in the household. The content looks like this:

Actions.HH0.csv

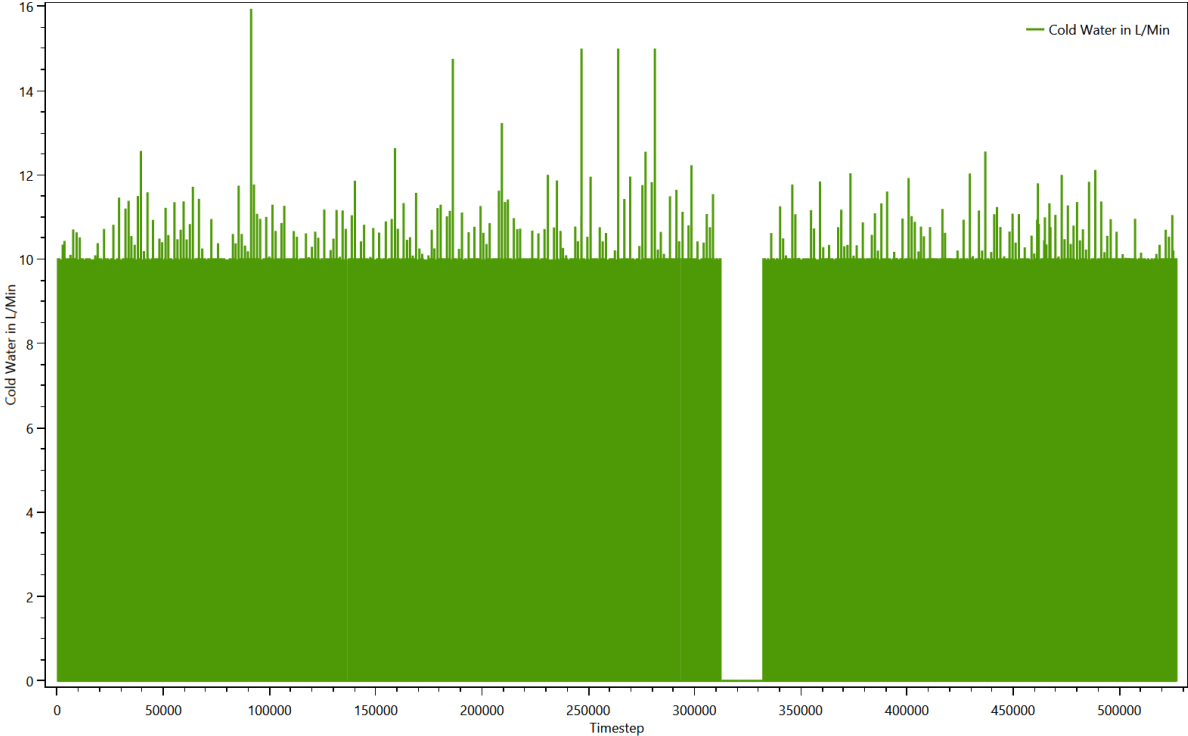
```
Time step;Calendertime;Person;Selected affordance;Affordance Category;Is Sick
0;01.01.2016 00:00;CHR06 Jak Jobless (30/Male);sleep bed 08 (08 h);sleep;False;
386;01.01.2016 06:26;CHR06 Jak Jobless (30/Male);go to the toilet;hygiene;False;
392;01.01.2016 06:32;CHR06 Jak Jobless (30/Male);eat breakfast (1 h);cooking;False;
462;01.01.2016 07:42;CHR06 Jak Jobless (30/Male);get ready in the morning (men);hygiene;False;
473;01.01.2016 07:53;CHR06 Jak Jobless (30/Male);use the laptop (1.5 h);Active Entertainment (Computer,
Internet etc);False;
563;01.01.2016 09:23;CHR06 Jak Jobless (30/Male);cook coffee;cooking;False;
573;01.01.2016 09:33;CHR06 Jak Jobless (30/Male);go to the toilet;hygiene;False;
579;01.01.2016 09:39;CHR06 Jak Jobless (30/Male);go shopping for food in the supermarket (1.5
h);shopping;False;
645;01.01.2016 10:45;CHR06 Jak Jobless (30/Male);take a nap;sleep;False;
702;01.01.2016 11:42;CHR06 Jak Jobless (30/Male);watch the news;Passive Entertainment (TV etc.);False;
718;01.01.2016 11:58;CHR06 Jak Jobless (30/Male);play Playstation;Passive Entertainment (TV etc.);False;
775;01.01.2016 12:55;CHR06 Jak Jobless (30/Male);go to the toilet;hygiene;False;
781;01.01.2016 13:01;CHR06 Jak Jobless (30/Male);use the laptop (1 h);Active Entertainment (Computer,
Internet etc);False;
836;01.01.2016 13:56;CHR06 Jak Jobless (30/Male);read a book on the couch only 9:00 to 22:00;Offline
Entertainment;False;
947;01.01.2016 15:47;CHR06 Jak Jobless (30/Male);play with smartphone (1 h);Active Entertainment
(Computer, Internet etc);False;
1004;01.01.2016 16:44;CHR06 Jak Jobless (30/Male);go to the toilet;hygiene;False;
1010;01.01.2016 16:50;CHR06 Jak Jobless (30/Male);go to community college;school;False;
1209;01.01.2016 20:09;CHR06 Jak Jobless (30/Male);use the laptop for Internet, Movie, Music, News (2
h);Active Entertainment (Computer, Internet etc);False;
1323;01.01.2016 22:03;CHR06 Jak Jobless (30/Male);sleep bed 08 (08 h);sleep;False;
```

Sum Profiles

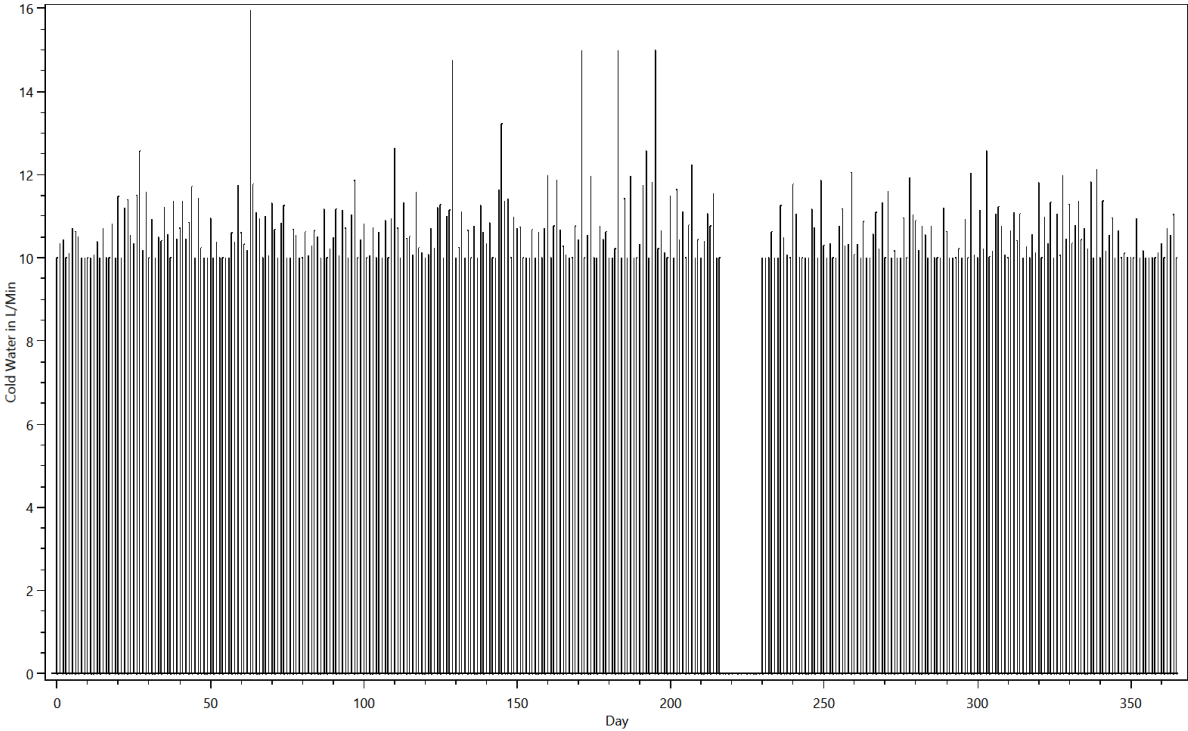
This is made from the files starting with: SumProfiles

This shows the energy use during the simulation.

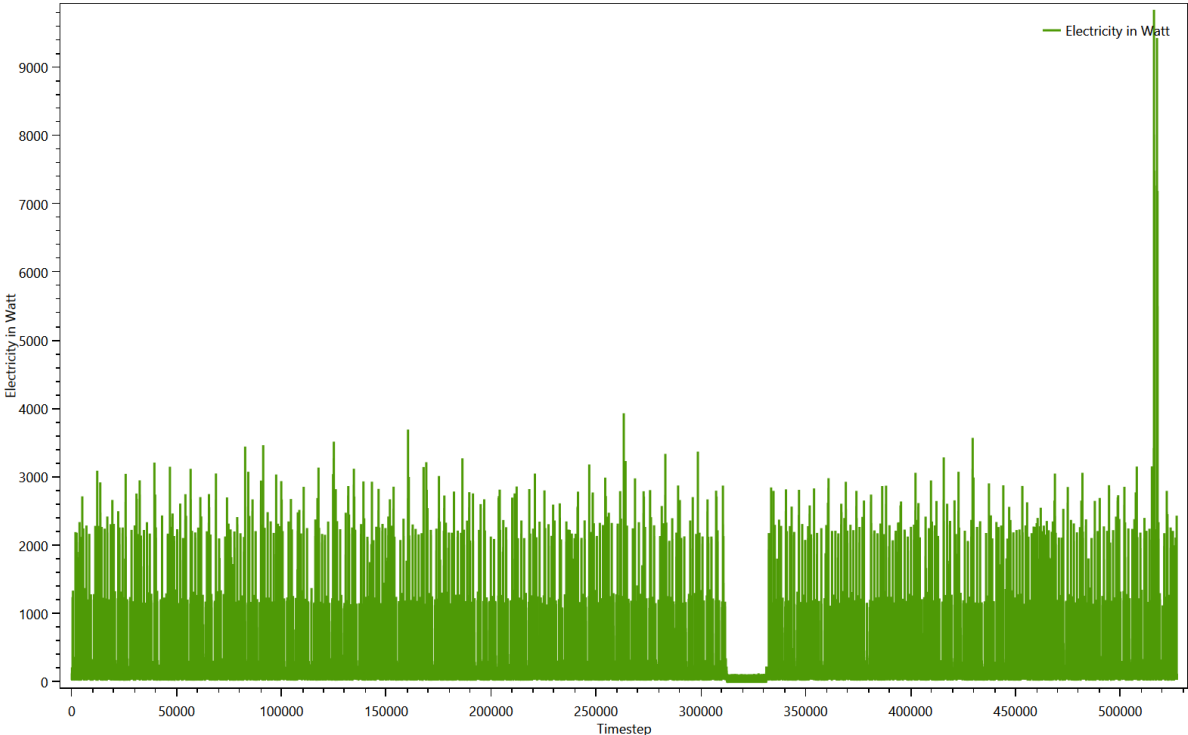
[Summed up curve for Cold Water from SumProfiles.Cold Water.png](#)



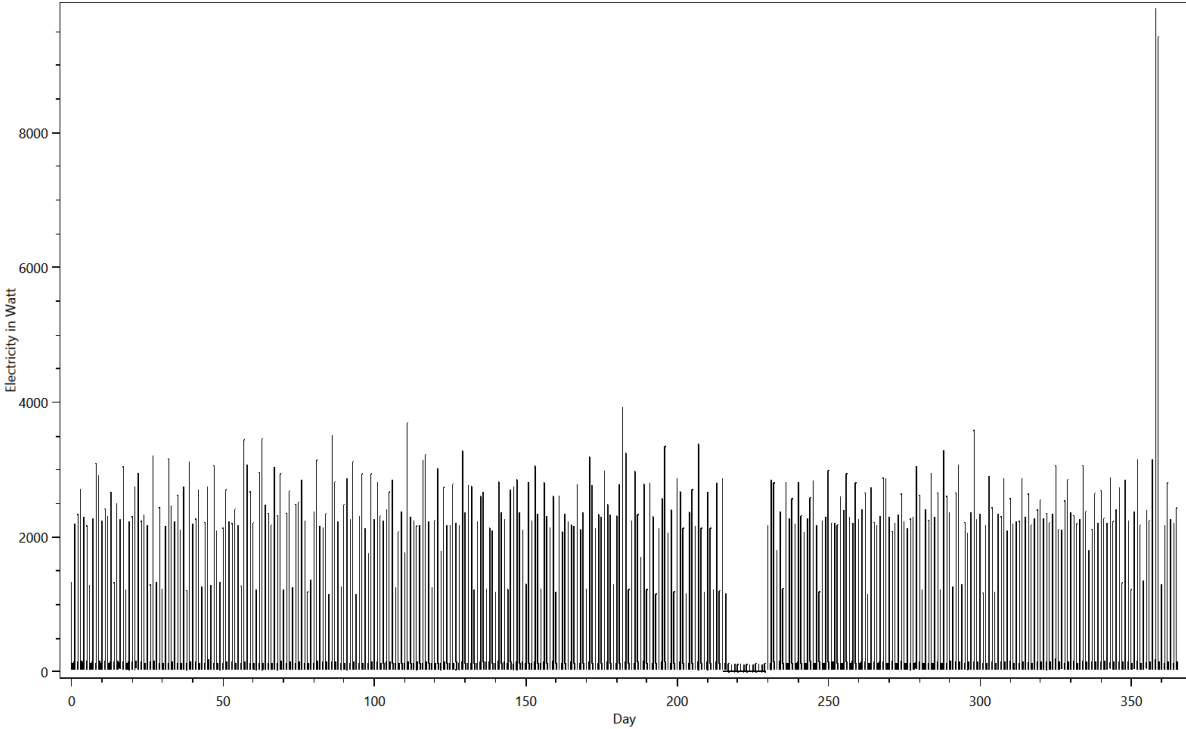
Summed up curve for Cold WaterMinMax from SumProfiles.Cold WaterMinMax.png



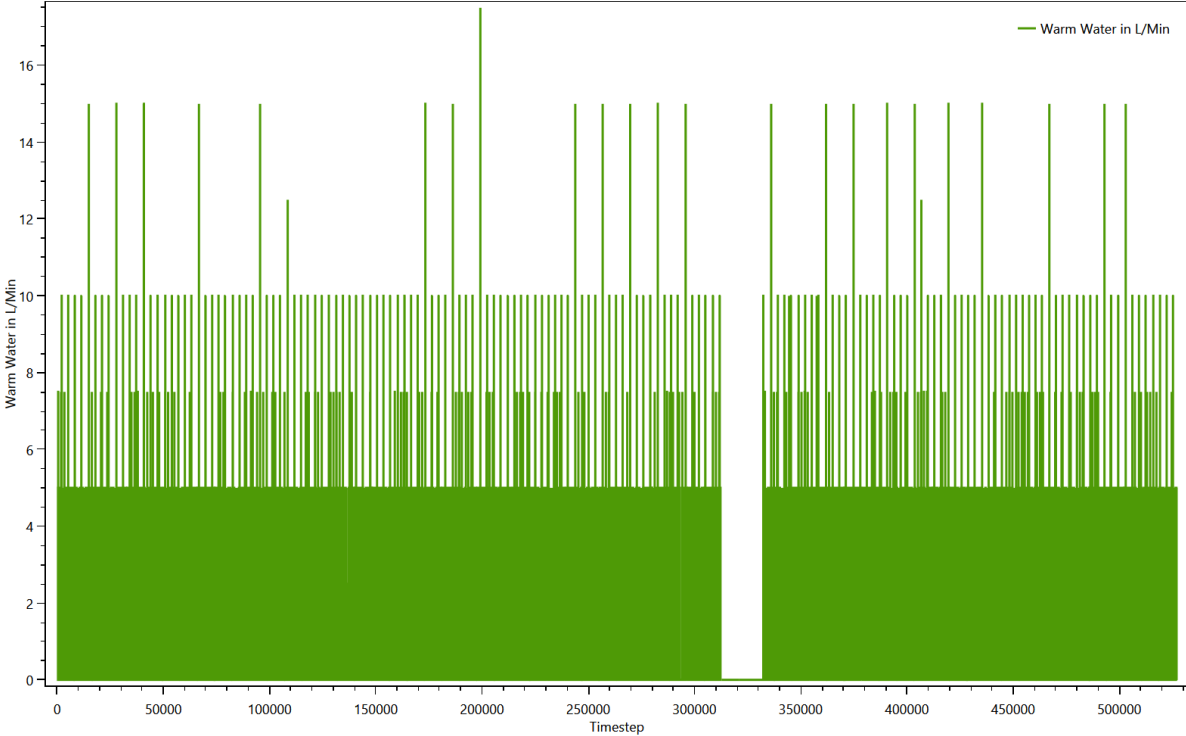
Summed up curve for Electricity from SumProfiles.Electricity.png



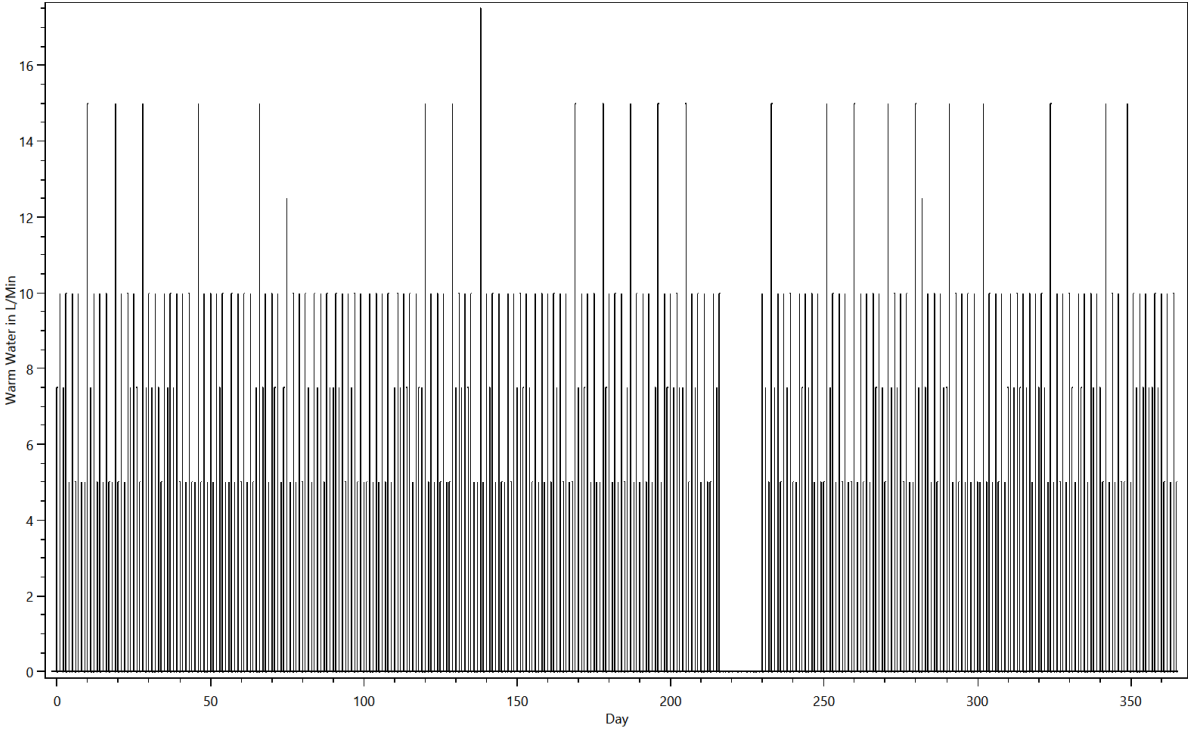
Summed up curve for ElectricityMinMax from SumProfiles.ElectricityMinMax..png



Summed up curve for Warm Water from SumProfiles.Warm Water.png



Summed up curve for Warm WaterMinMax from SumProfiles.Warm WaterMinMax.png



Time Profiles

This is made from the files starting with: Time Profiles

These files show which time profiles were used for each device and how often. The content looks like this:

TimeProfiles.HH0.CHR06 Jak Jobless 0.txt

Device;Load Type;Profile;Number of Activations

AEG PN 2200 RX 4935365097;Electricity;0 h 05 min 100% [Synthetic];54

AFK BM-2N;Electricity;Backing profile IV Bread 45 min [Synthetic];81

Bathroom Light (20W);Electricity;Bath - light [Synthetic for Light Device];597

Bathroom Mirror Light 10 W (LED);Electricity;Bath - light [Synthetic for Light Device];597

Bathroom Sink 5 L/Min;Warm Water;0 h 01 min 100% [Synthetic];2615

Bed 8;None;08 h 0 min 100% [Synthetic];356

Bedroom Light (20W);Electricity;Bedroom - light [Synthetic for Light Device];30

CD/DVD Player / Philips DVDR 725 H;Electricity;01 h 30 min 100% [Synthetic];124

CD/DVD Player / Philips DVDR 725 H;Electricity;02 h 0 min 100% [Synthetic];107

CD/DVD Player / Philips DVDR 725 H;Electricity;Standby TV / Receiver 1 h 0 min 3% [Synthetic];8479

Canister vacuum cleaner / Siemens VS 06 G 1831;Electricity;0 h 30 min 100% [Synthetic];19

Cell Phone Samsung Charging;Electricity;Profile for Cell Phone Samsung Charging Electricity [Measurement by ZSW (1min)];1028

Cell Phone Samsung Charging;Electricity;Standby Generic 01 h 0 min 1% [Synthetic];286

Cellar Light (20W);Electricity;Hobby Room - light [Synthetic for Light Device];17

Clatronic MS 3249 Milk Foamer;Electricity;0 h 10 min 100% [Synthetic];331

Cleanser;None;01 h 0 min 100% [Synthetic];92

Cloth Drying Rack;None;0 h 20 min 100% [Synthetic];72

Community College;None;03 h 0 min 100 % [Synthetic];69

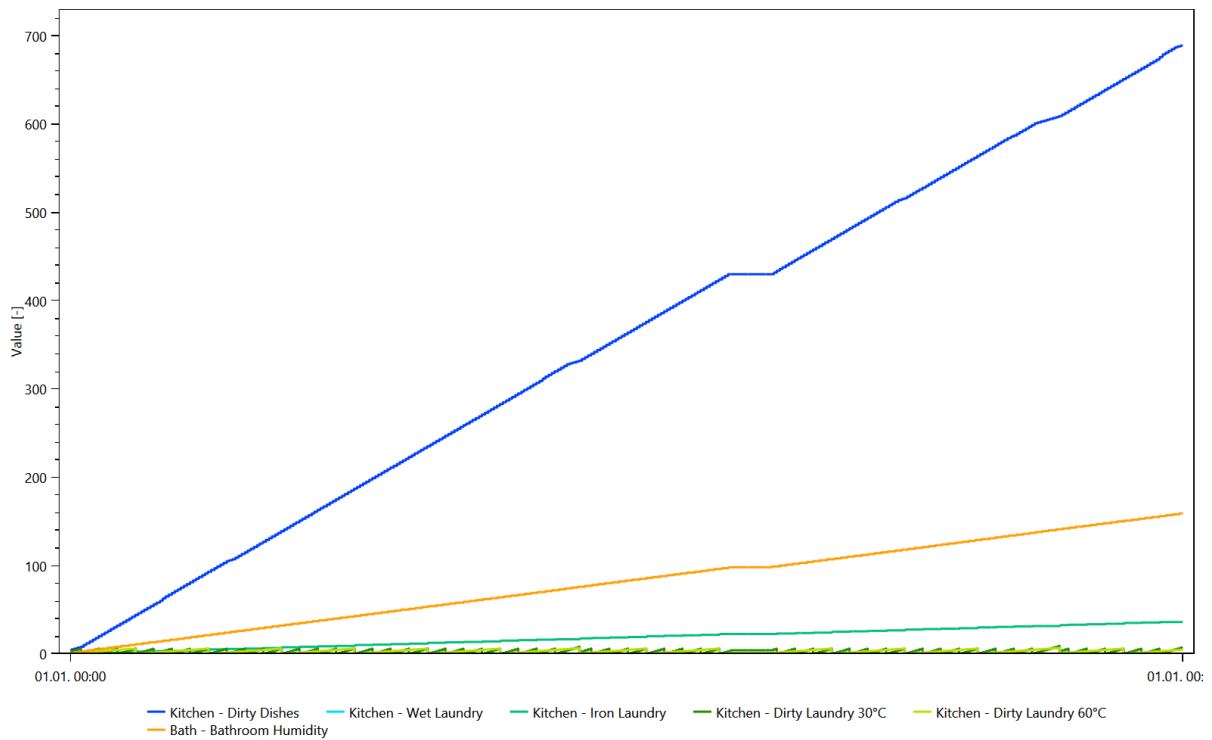
Couch;None;01 h 0 min 100% [Synthetic];346

Variables

This is made from the files starting with: Variablelogfile

The variables are used to keep track of things like dirty laundry, dirty dishes and the amount of laundry to iron. They are used to ensure that for example the dishwasher is only turned on if there are sufficient dirty dishes. One chart shows the first 25000 timesteps of the contents of all variables, the other shows the entire time span.

Variables



Variables

